



Recycle Disassemble Instruction (Dismantled Information)

Requirements according to ANNEX VII of DIRECTIVE 2012/19/EU
on waste electrical and electronic equipment (WEEE)

Materials and components with hazardous content

LCDs may contain hazardous substances like Pb and BFRs which are covered by exemptions under the RoHS directive. However, the majority is present in the printed circuit boards assembly. In order to reduce emissions as much as possible, a complete disposal of the old appliance is required. This treatment may only be performed in authorized handling plants.








Product Name: LCD Monitor

Model No.: PD3205U, PD3205UE





Disassembly Tools

| Tool | picture |
|------------------------------------|--|
| Philips Screwdriver for M3 Screw |  A Philips screwdriver with a red handle and a silver shaft, lying horizontally on a light-colored wooden surface. |
| Nosed Pliers |  A pair of red-handled nose pliers with long, thin jaws, lying horizontally on a light-colored wooden surface. |
| Diagonal Cutting Pliers |  A pair of red-handled diagonal cutting pliers with short, angled jaws, lying horizontally on a light-colored wooden surface. |
| Slotted screwdriver |  A slotted screwdriver with a green handle and a silver shaft, lying horizontally on a light-colored wooden surface. |
| Six Point Sockets |  A six-point socket screwdriver with a yellow handle and a silver shaft, lying horizontally on a light-colored wooden surface. |
| Philips Screwdriver for M2.5 Screw |  A Philips screwdriver with a red handle and a silver shaft, lying horizontally on a light-colored wooden surface. |
| Knife |  A white folding knife with a black handle and a silver blade, lying horizontally on a light-colored wooden surface. |



Disassembly process

1) Remove the stand base

Push the button to remove the stand base assy.



Remove the screw to remove the stand assy and the base assy.





2) Remove the rear cover

Remove the screws and pull apart bezel & rear cover.

Note: Be careful, the BEZEL CLIP is easy to break. Bellow picture for reference.

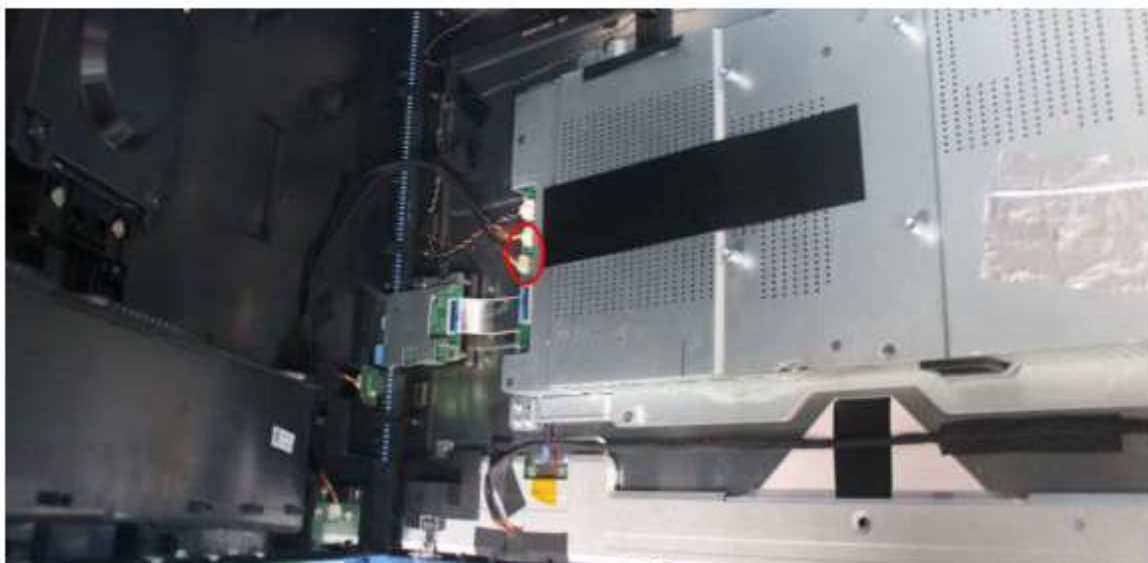
Use a tool (like picture using) to open all latches.



The figure of the tool:

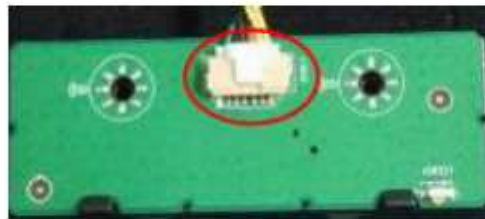
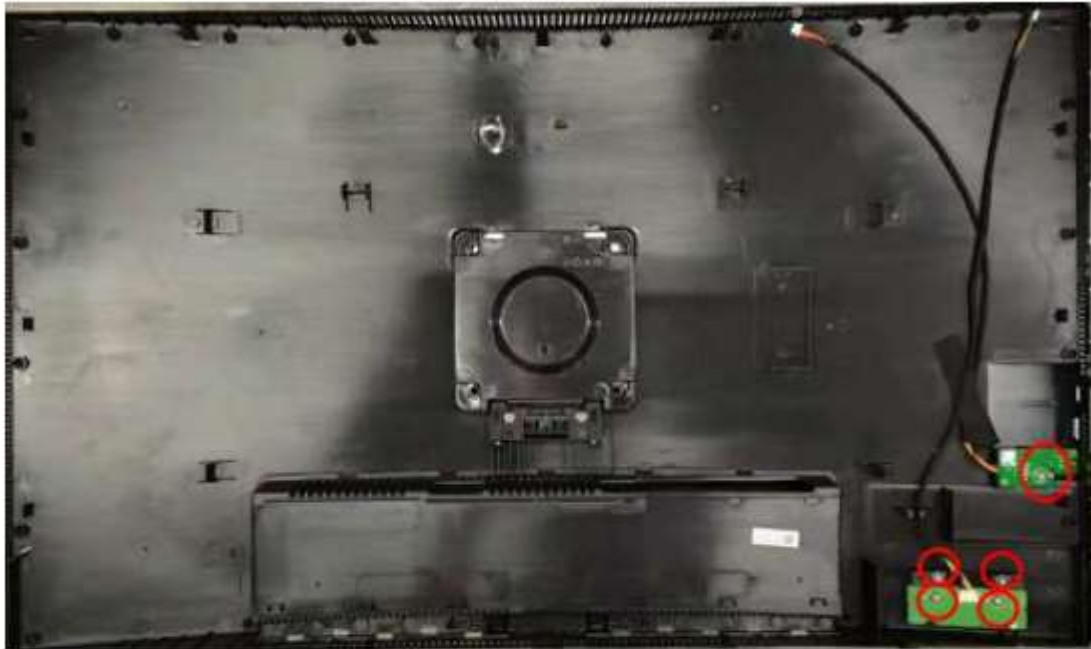


Disconnect the connectors to remove the rear cover.





Remove the screws and disconnect the connectors to remove the Key board and the Audio board.



The Key



The key power



The key board

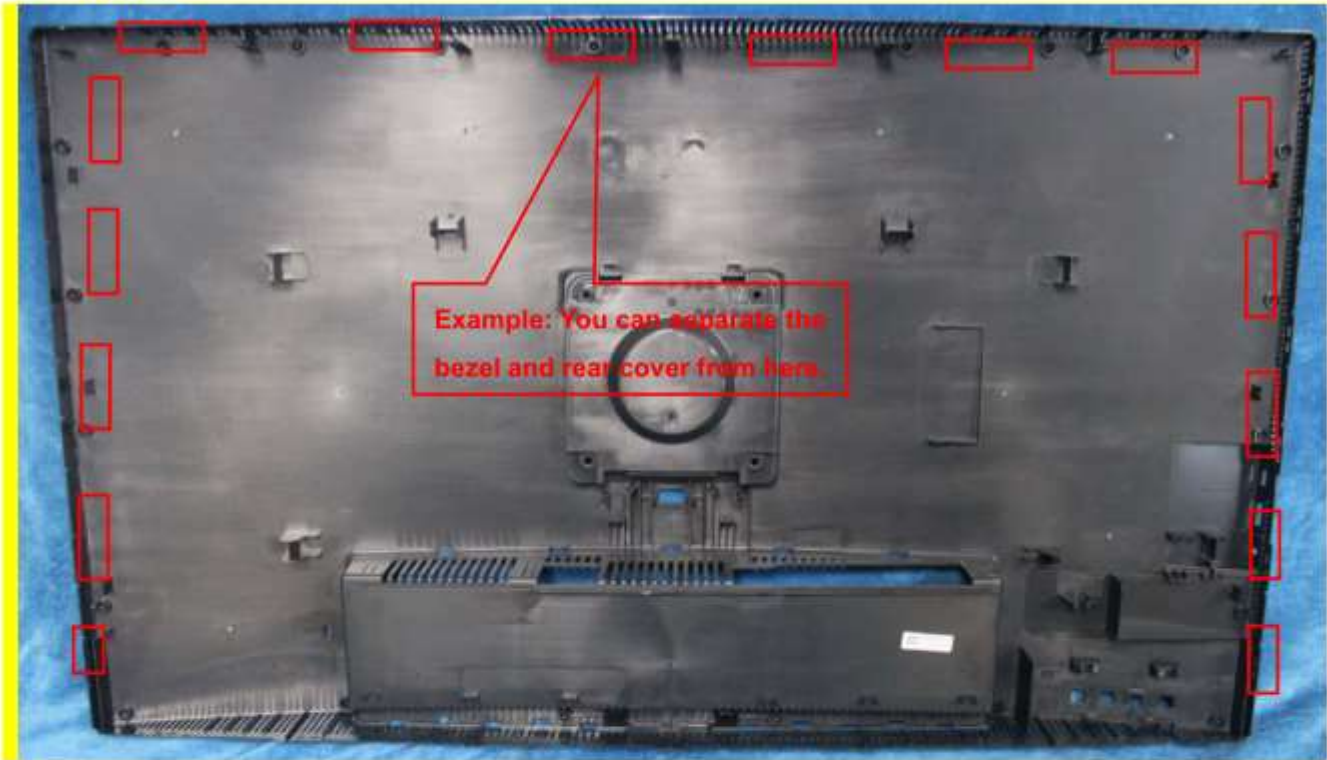


The Audio board





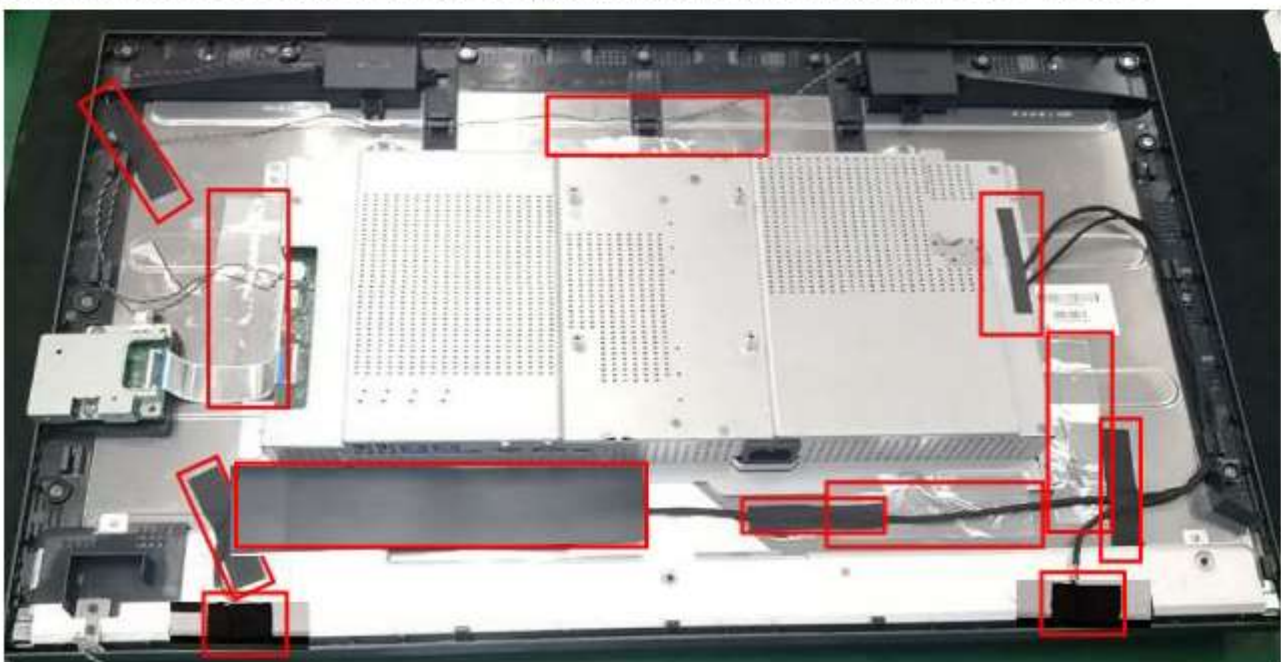
Note: The positions of the clips on the rear cover are as follow. There are some small gaps between CLIPS. It's suggested to separate bezel and rear cover from the gaps.



3) Remove the main frame from the panel

Remove the black rubberized fabric and aluminum foil.

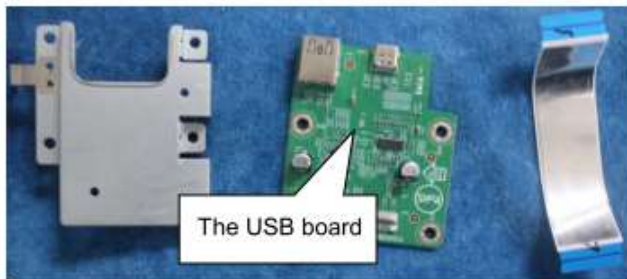
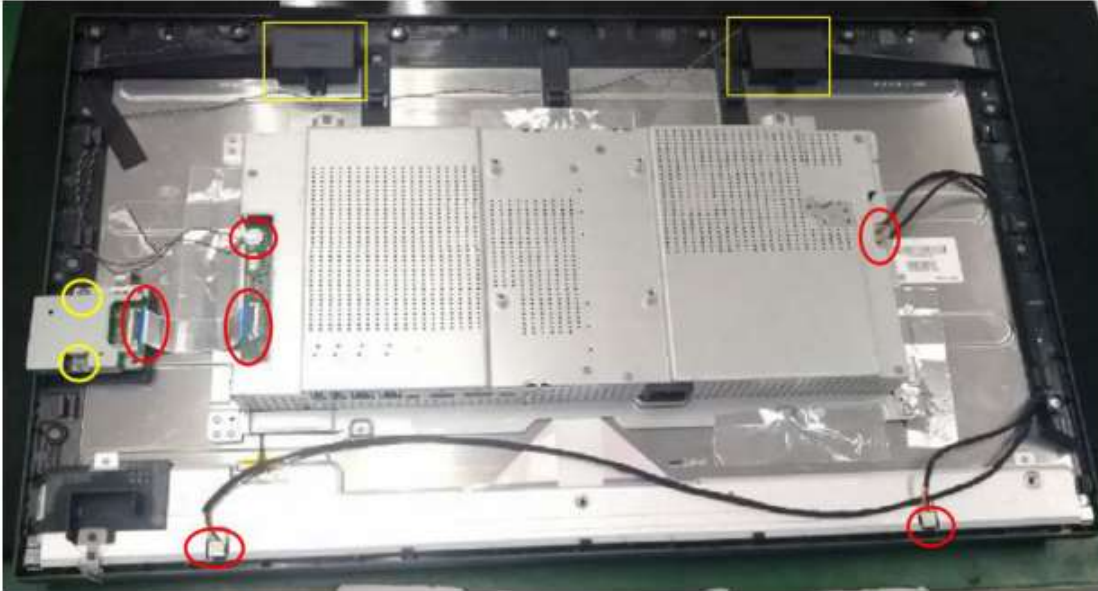
Note: When you assembled the LCD, you must tidy the wire as follow picture.



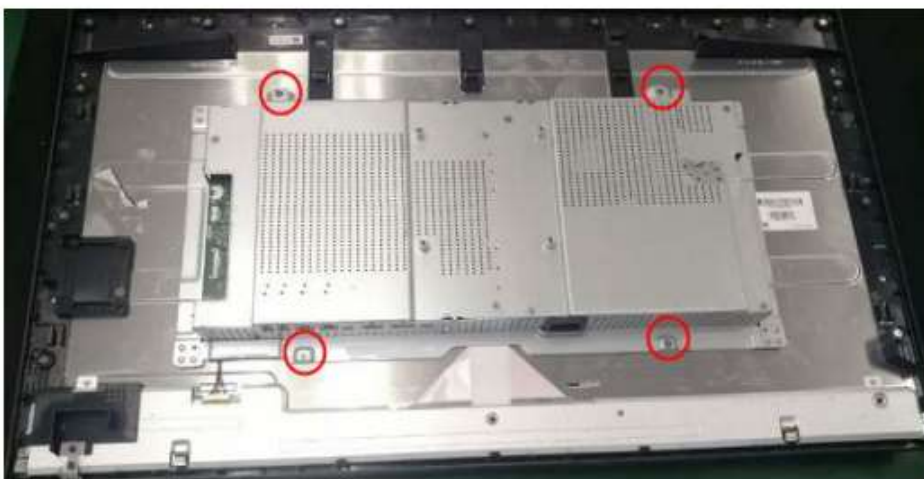


Disconnect the connectors. Remove the screws to remove USB board. Remove the speaker

Note: When you assembled the LCD, you must tidy the wires as follow picture.

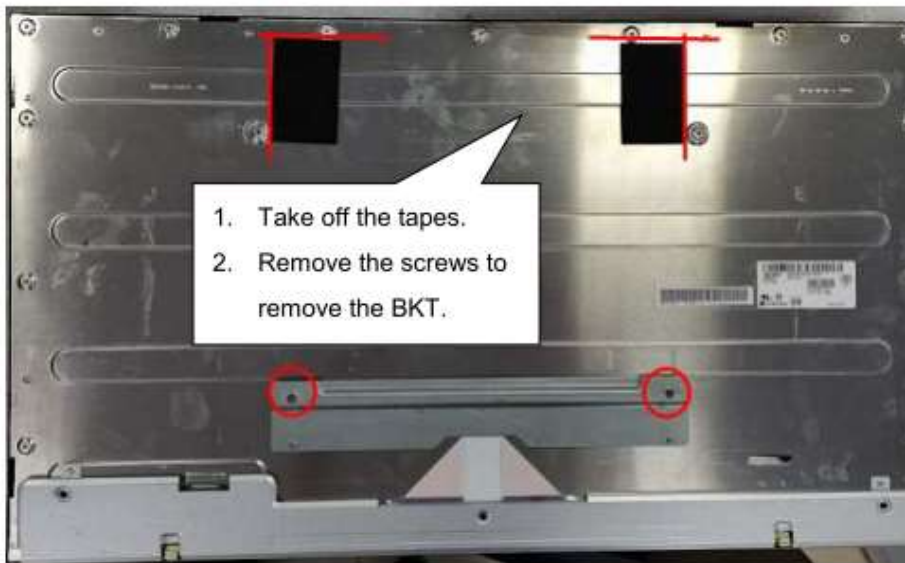
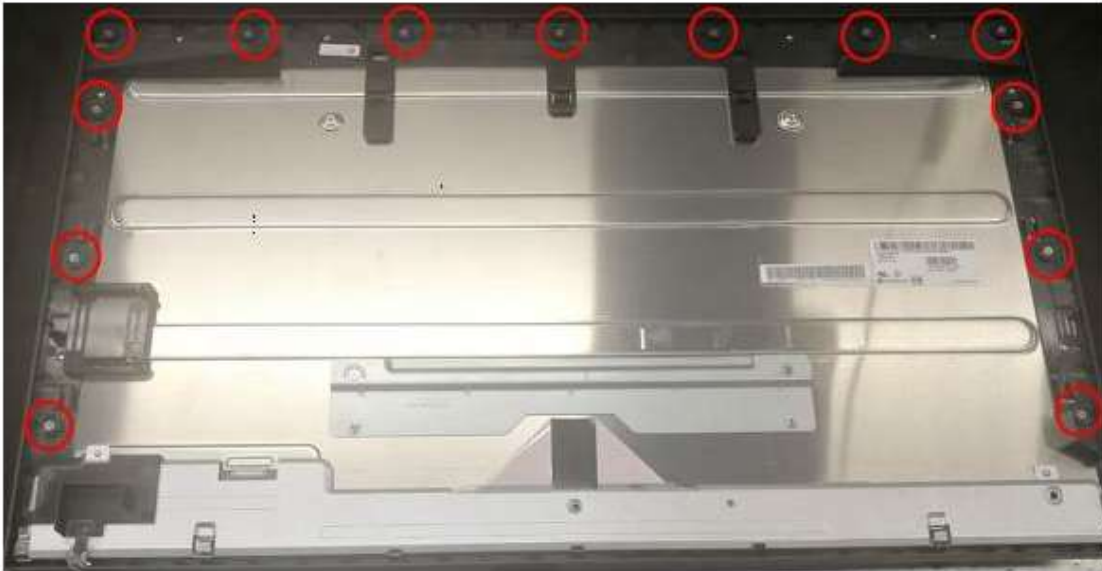


Remove the screws and disconnect the pin to remove the mainframe.





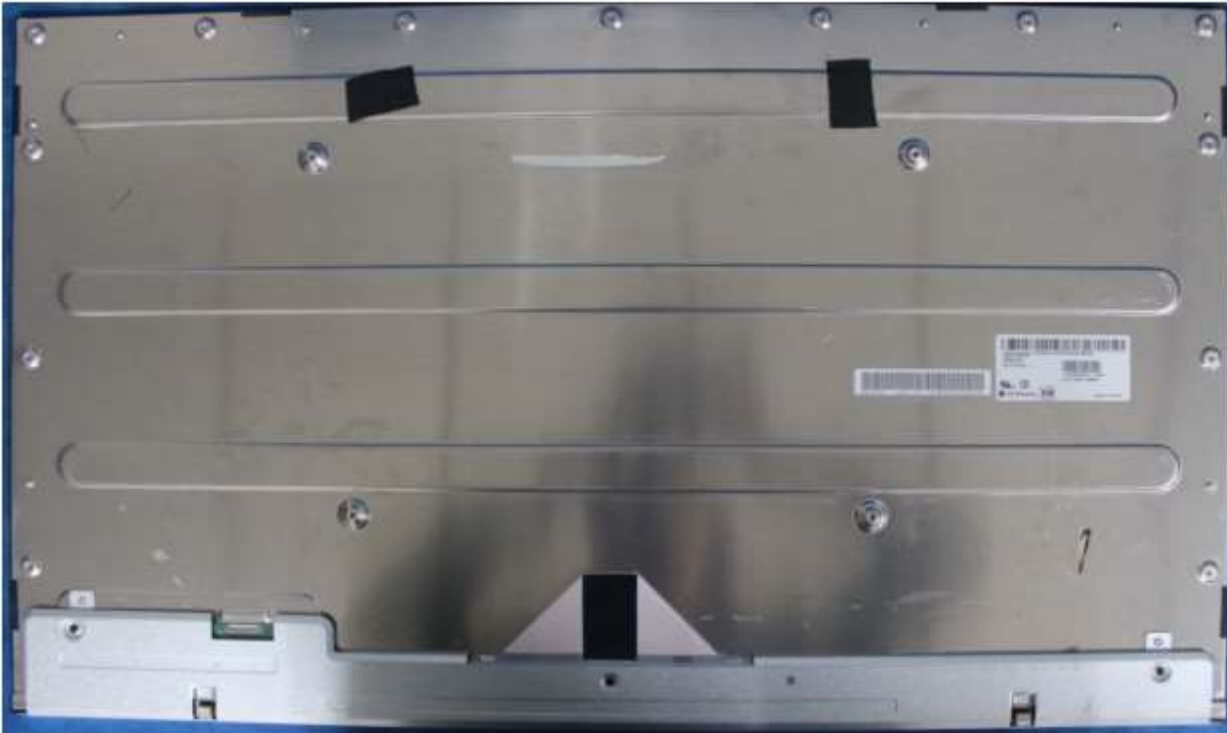
4) Remove the screws to separate the panel and the Middle Frame.



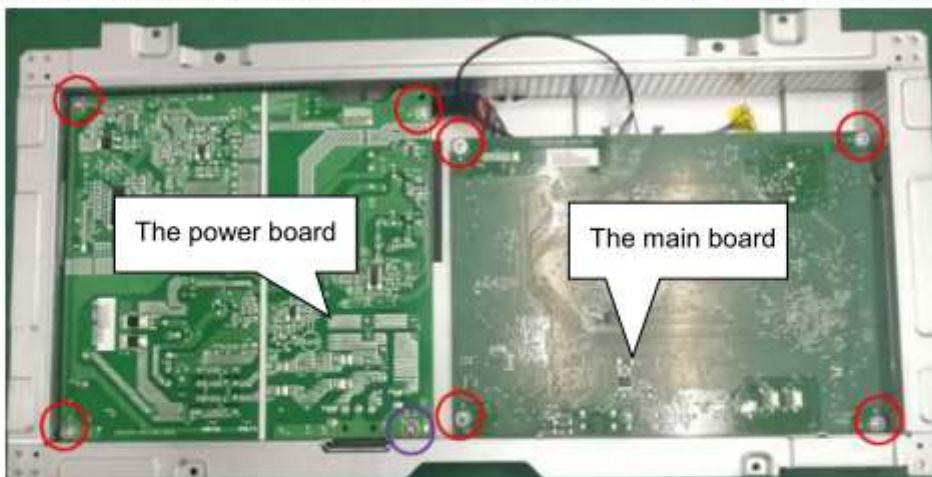


Remove the panel

Note: Be course the panel is easy to broken, when we remove the panel, we should hold the iron on 1 panel edge use two hands at the same time, and should avoid touching the panel surface.



5) Remove the screws and disconnect the connectors to remove the boards.





Disassembly Time

Total time: 30 minutes