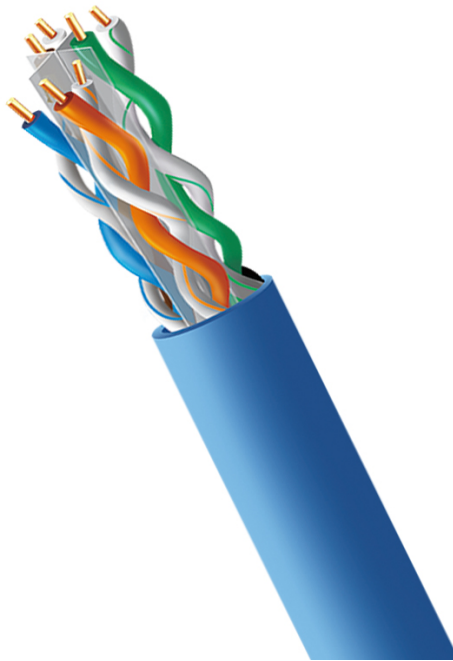


4XEM CAT 6A 1000FT (305m) Riser Bulk Cable (Blue)

4XEM Part- 4XCAT6A1000RBL



Introducing 4XEM's 1000ft CAT6A Pure Copper Riser Bulk Cable is perfect for creating custom length horizontal network cable runs. This cable offers an exceptional value for jobs that require standards compliance at a cost-effective price. Elevate your connectivity with this high-performance cable, meticulously designed to meet the demands of modern networking environments.

Whether you're setting up a new network or upgrading an existing one, 4XEM's CAT6A Pure Copper Riser Bulk Cable provides the robust solution you need. Choose 4XEM for a reliable, high-quality Pure Copper Riser Bulk Cable that sets the standard for excellence in networking. Elevate your connectivity experience today!

4XEM Products Are Available At Your Favorite Online Retailers

WWW.4XEM.COM

Contact Todd Schaus 4XEM sales Rep
1-866-999-4936 Ext.104 tschaus@4xem.com



Features

- 1000ft cable length – connector free
- Pull-box packaging
- Cat6A – 500MHz cable rating
- High-performance networking – higher bandwidth than CAT6
- Pure copper construction – solid core
- 23 AWG
- Riser-rated for safe vertical installations in buildings
- Blue color
- Ideal for new network setups or upgrades

Application

- Home office
- Small business
- Home Internet
- Networking

4XEM Products Are Available At Your Favorite Online Retailers





DATA SHEET

Warranty Information	Warranty	Lifetime
Performance	Cable Rating	CAT6A - 500 MHz
Hardware	Cable Jacket Material Fire Rating	PVC (Polyvinyl Chloride) CMR - Communications Multitpurpose Cable, Riser (Suitable for In-Wall)
Physical Characteristics	Color Conductor Material Conductor Core Wire Gauge Shielded Twisted Pair Divider Cable OD Cable Length Weight of Product	Blue Pure Copper Solid 23 AWG No Yes 0.35 in [9.0 mm] 1000 ft [304.9 m] 31.31 lbs [14.2 kg]
Packaging Information	Package Type Package Height Package Width Package Length Shipping (Package) Weight	Pull-Box 19.88 in [505 mm] 16.34 in [415 mm] 8.17 in [207.5 mm] 31.31 lbs [14.2 kg]
What's in the Box	Included in Package	1000 ft Roll of Blue C6A Riser Pure Copper Bulk Cable

* Product appearance and specifications are subject to change without notice.

* Same day shipping is only available for orders shipping within the United States.

4XEM Products Are Available At Your Favorite Online Retailers

WWW.4XEM.COM

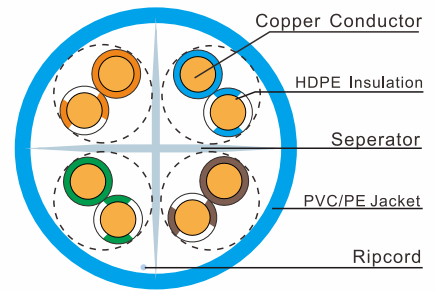
**Contact Todd Schaus 4XEM sales Rep
1-866-999-4936 Ext.104 tschaus@4xem.com**



Category 6A Unscreened Cable

KEY FEATURES

- > ANSI/TIA 568-2.D category 6A verified
- > ISO/IEC 11801 2nd Ed. category 6a compliant
- > Integrated EMI guard for reduced cable diameter & improved AXT performance
- > UL listed CMP, CSA Type FT6
- > Reach & RoHS 2 compliant
- > Supports PoE up to 100 Watts



Category 6A Unscreened CMP Cable

ORDERING INFORMATION



PART NO.	DESCRIPTION
EM6a-CMP6U	Category 6a U/UTP 4 pair 23 AWG solid cable, CMP, 1,000 ft (305 m)
EM6a-CMR6U	Category 6a U/UTP 4 pair 23 AWG solid cable, CMR, 1,000 ft (305 m)

Specify cable jacket color by substituting in P/N for the following: **WH** **BU**

For other cable jacket colors, contact customer service.

ELECTRICAL CHARACTERISTICS

Frequency MHz.	Ins. Loss (dB/100m) Max.	Return Loss (dB) Min.	Pair to Pair		Power Sum		NEXT	ELFEXT	Po. Delay (ns/100)
			NEXT (dB/100m) Min.	ACR-F (dB/100m) Min.	NEXT (dB/100m) Min.	ELFEXT (dB/100m) Min.			
1	2.1	2.0	76.3	71.8	74.3	69.8	75.0	75.0	570
10	6	25	61.3	51.8	59.3	49.8	72.5	58.2	538
16	7.6	25	58.2	47.7	56.2	45.7	70.5	54.1	536
20	8.5	25	56.8	45.8	54.8	43.8	69.5	52.2	536
31.25	10.8	23.6	53.9	41.9	51.9	39.9	67.6	48.3	535
62.5	15.5	21.5	49.4	35.9	47.4	33.9	64.5	42.3	535
100	19.9	20.1	46.3	31.8	44.3	29.8	62.5	38.2	534
200	29.2	18	41.8	25.8	39.8	23.8	58	32.2	534
250	33	17.3	40.3	23.8	38.3	21.8	56.5	30.2	534
300	36.6	16.8	39.1	22.3	37.1	20.3	55.3	28.7	534
400	43.2	15.9	37.3	19.8	35.3	17.8	53.5	26.2	534
450	46.3	15.5	36.5	18.7	34.5	16.7	52.7	25.1	534
500	49.2	15.2	35.8	17.8	33.8	15.8	52	24.2	534

Nominal Velocity of Propagation (NVP) 76%

Typical Applications

- IEEE802.3 1000 Base-TX Gigabit Ethernet
- IEEE802.3an 10G Base-T Gigabit Ethernet
- 1.2/2.4Gbps ATM
- Digital and analogue video

SPECIFICATIONS

CONSTRUCTION

- Conductor Size:** 23 AWG
- Conductor Material:** Solid bare copper
- EMI Guard**
- Pair Count:** 4 Pairs
- Jacket Material:** Plenum rated flame-retardant thermoplastic
- Overall Cable Diameter:** 0.28 in (7.0 mm)
- Packaging:** 1,000 ft (305 m)

ELECTRICAL

- Maximum Delay Skew:** 45 ns/100 m
- Input Impedance:** 100 15 Ohm (1-100 MHz)
- 100 15 Ohm (101-250 MHz)
- 100 15 Ohm (251-500 MHz)