

Dismantling information

The document is intended for use by end-of-life recyclers or treatment facilities. It provides the basic instructions for the disassembly of LG products to remove components and materials requiring selective treatment.

Product Identification

Type of Product	Monitor
Model name	27GR93U;32GR93U This document covers derivation model which has same conceptual design and dismantling process

Displays must be stored in accordance with the requirements stipulated in Appendix VIII (1) or (2) of Directive 2012/19/EU and must, amongst other things, be stored in a weatherproof manner. Containers with covers must be used when storing and transporting the Displays.

Contents

- 1. Materials and components for Selective Treatment**
- 2. Tools Required**
- 3. Product Disassembly Process**
- 4. Disassembly of External enclosure**



1. Materials and components for Selective Treatment

Displays may contain hazardous substances like Pb and BFRs which are covered by exemptions under the RoHS directive. However, the majority is present in the PCB assembly. In order to reduce emissions as much as possible, a complete disposal of the old appliance is required. This treatment may only be performed in authorized handling plants.

Materials and components	Notes	Included	Location
Printed Circuit Boards (PCB) or Printed Circuit Assemblies (PCA)	With a surface greater than 10 square cm	○	SET
Batteries	For Remote control	-	
	Internal batteries	-	
Mercury containing components	display backlights	-	
Liquid Crystal Displays (LCD) with a surface greater than 100 square cm	Includes background illuminated displays with gas discharge lamps	○	SET
Capacitors / condensers (Containing PCB / PCT)		-	
Electrolytic Capacitors / Condensers measuring greater than 2.5 cm in diameter or height		○	Adapter
External electric cables cords	Power cord	○	Accessory
	Signal cable	○	Accessory
Gas Discharge Lamps		-	
Plastics containing Brominated Flame Retardants		-	
Components and waste containing asbestos		-	
Components, parts and materials containing refractory ceramic fibers		-	
Components, parts and materials containing radioactive substances		-	

2. Tools Required

List the type that would typically be used to disassemble the product to a point where components and materials requiring selective treatment can be removed.

Tool Description	Tool information
Screw driver	
Plastic Hera Jig	

3. Product Disassembly Process

1. Batteries

No battery

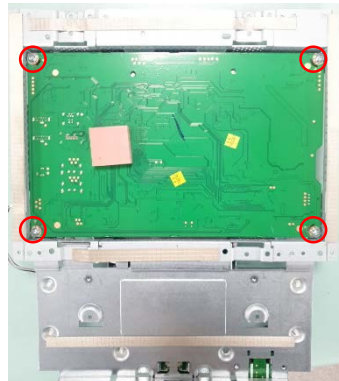
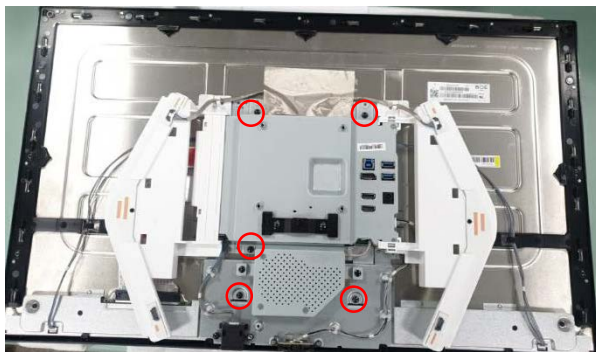
3. Product Disassembly Process

2. PCBs and LCD Module

The back cover of the display can easily be removed by screw driver and plastic Hera jig.

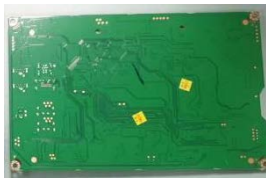


Once removed this will expose the accessible electronic units (PCBs), which can now be easily removed with hand and screw driver.



LCD module(together with their casing) is only left after all other parts like electronic units and casing have been removed.

Main Board



Control Board



Lighting PCB (2EA)



LCD module



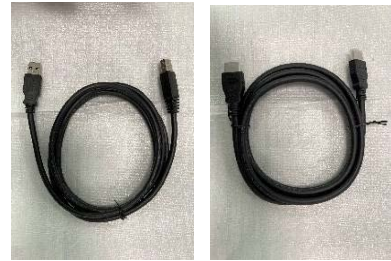
H/P Board



3. Product Disassembly Process

3. Power cord and signal cables

A Power cord plugged into the back of the display can easily be removed by hand or cables are provided as de-attached from the product



4. Capacitors > 25 mm

Capacitors > 25 mm are located in the power supply units and can be removed by nipper



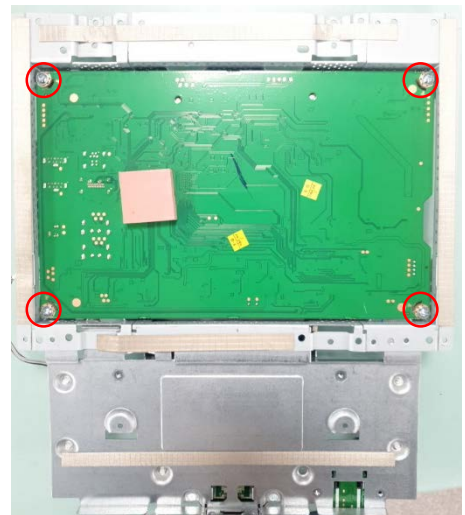
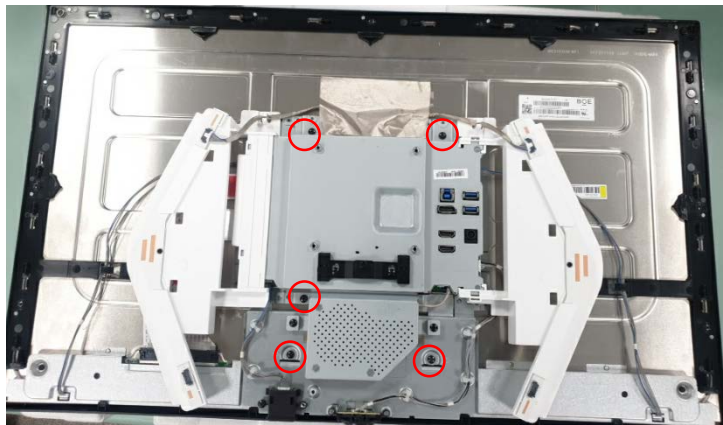
Cut the lead using nipper

4. Disassembly of External enclosure

Unscrew the B/C and detach the back door.



Unscrew the Metal shield.



PCB



LCD Module

