



Product End-of-Life Disassembly Instructions

Product Category: Notebooks

Marketing Name / Model
[List multiple models if applicable.]

HP ZBook Fury G1i 16 inch Mobile Workstation PC

HP ZBook Fury G1i 16

Purpose: The document is intended for use by end-of-life recyclers or treatment facilities. It provides the basic instructions for the disassembly of HP Inc. products to remove components and materials requiring selective treatment, as defined by EU directive 2012/19/EC, Waste Electrical and Electronic Equipment (WEEE).

NOTE: Recyclers should sort plastic materials into resin streams for recycling based on the ISO 11469 plastic marking code on the plastic part. For any questions on plastic marking or identification of location of parts or components requiring selective treatment, please contact [HP's Sustainability Contact](#).

1.0 Items Requiring Selective Treatment

1.1 Items listed below are classified as requiring selective treatment. An "X" in the list of components and parts indicates the product contains the component or part requiring selective treatment

Item Description	Components and parts requiring selective treatments	Quantity of items included in product
Printed Circuit Boards (PCB) or Printed Circuit Assemblies (PCA) with a surface greater than 10 sq cm	<input checked="" type="checkbox"/> Main board (MB) PCB <input checked="" type="checkbox"/> Solid state drive (SSD) PCB <input checked="" type="checkbox"/> Wireless WAN module (WWAN) PCB <input checked="" type="checkbox"/> Touch module PCB <input checked="" type="checkbox"/> Power supply PCB <input type="checkbox"/> External Keyboard (KB) <input type="checkbox"/> External Mouse <input checked="" type="checkbox"/> Others: (1) Hub board (2) Adhesive Hub board (3) MIC/ALS board (4) KB transfer board (5) KB Connection/Hub board (6) NFC board (7) Smart Card Reader (8) SD Daughter board (9) RAM module	14
Batteries, excluding Li-Ion batteries. This includes standard alkaline, coin or button style batteries	<input type="checkbox"/> RTC/CMOS battery <input type="checkbox"/> Others: _____	0
Li-Ion batteries. Includes all Li-Ion batteries if more than one is provided with the product (such as a detachable notebook keyboard battery, etc.)	Li-ion battery(ies) are attached to the product by: <input checked="" type="checkbox"/> screws <input type="checkbox"/> snaps <input type="checkbox"/> adhesive	1

Item Description	Components and parts requiring selective treatments	Quantity of items included in product
	<input type="checkbox"/> other. Explain _____	
Mercury-containing components. For example, mercury in lamps, display backlights, scanner lamps, switches, batteries		0
Liquid Crystal Displays (LCD) with a surface greater than 100 sq cm. Includes background illuminated displays with gas discharge lamps	<input checked="" type="checkbox"/> Panel LCD	1
Cathode Ray Tubes (CRT)		0
Capacitors / condensers (Containing PCB/PCT)		0
Electrolytic Capacitors / Condensers measuring greater than 2.5 cm in diameter or height	<input type="checkbox"/> Power Supply capacitor(s) or condenser(s)	0
External electrical cables and cords	<input checked="" type="checkbox"/> AC power cord <input type="checkbox"/> Audio, video or data cables <input type="checkbox"/> Other: _____	1
Gas Discharge Lamps		0
Plastics containing Brominated Flame Retardants (not including external electrical cables and cords, PCBs or PCAs already listed as a separate item above)		0
Components and parts containing toner and ink, including liquids, semi-liquids (gel/paste) and toner. Include the cartridges, print heads, tubes, vent chambers, and service stations.		0
Components and waste containing asbestos		0
Components, parts and materials containing refractory ceramic fibers		0
Components, parts and materials containing radioactive substances		0
Components containing chlorofluorocarbons (CFC), hydrochlorofluorocarbons (HCFC) or hydrofluorocarbons (HFC), hydrocarbons (HC)		0

2.0 Tools Required

List the type and size of the tools that would typically be used to disassemble the product to a point where components and materials requiring selective treatment can be removed.

Tool Description	Tool Size (if applicable)
Screwdriver	Philip #0
Screwdriver	Torx T8
Heatgun	N/A
Suction cup	N/A

3.0 Product Disassembly Process

3.1 List the basic steps that should typically be followed to remove components and materials requiring selective treatment including the required steps to remove the external enclosure.

1. Follow steps described in disassembly instruction & operation name in 3.2 section.
2. If parts can be removed without using a tool, remove it first.
3. Use correct screwdriver and torque value before unlocking the screw.

3.2 Location of components requiring selective treatment. The photos and/or graphics below identify the location of the parts or components requiring selective treatment within the main unit. For End-of-Life product disassembly instructions of external accessories including external power supply (EPS), external keyboard (KB) external mouse and external cables and cords, refer to the following URL: [End-of-Life Product Disassembly Instructions \(hp.com\)](#)



Standard Operation Procedure

Document No. disassembly SOP

Station: 1(1/1)

Operation Name : Disassembly E door

Ver. : 0.10 Edit date: 2025/3/26

Step :



1. Sliding Latch, parallel sliding E-door (Figure 1/2)

Figure 1

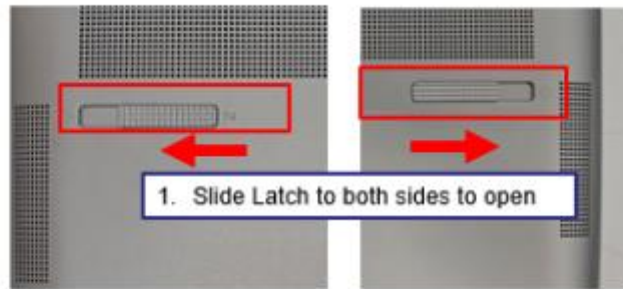


Figure 2

Notice: Please inform production line leader or master if you found any abnormal..

Fixture list (Spec.)	Qty	Symbol							
		Safe	Quality	Order	Fixture	Hear	Look	Do	Static

Prepared : Zhou.gui-ling Issued : IE department



Standard Operation Procedure

Document No. disassembly SOP

Station: 2(1/1)

Operation Name : Disassembly 3rd FAN

Ver. : 0.10 Edit date : 2025/3/26

Step :

1. Unplug the FAN CNTR , and remove the cable from the hook
2. Loosen the FAN set screws *2 (Figure 1)
 - ❖ Torque value: $1.0 \pm 0.2\text{kgfcm}$
 - ❖ Screws cannot slide teeth

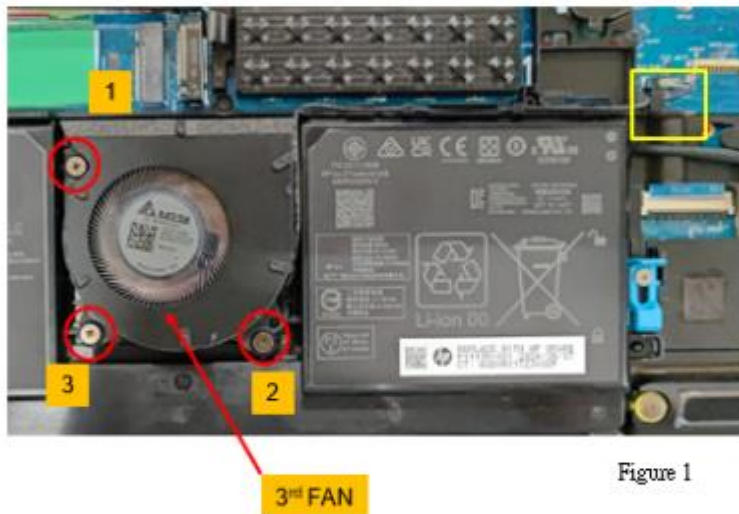


Figure 1

Notice: Please inform production line leader or master if you found any abnormal..

Fixture list (Spec.)	Qty	Symbol							
Electric screwdriver #1	1								
		Safe	Quality	Order	Fixture	Hear	Look	Do	Static

Prepared : Zhou.gui-ling Issued : IE department



Standard Operation Procedure

Document No. disassembly SOP

Station: 2(1/1)

Operation Name : Disassembly Battery

Ver. : 0.10 Edit date: 2025/3/26

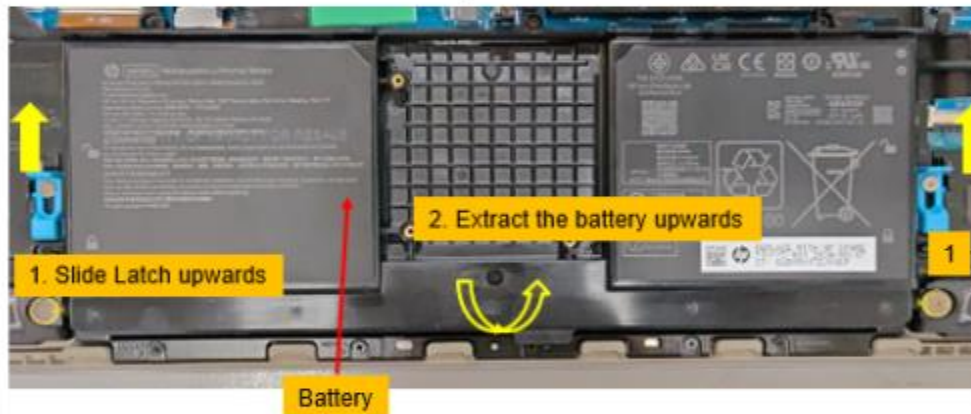
Step :

1. Unplug the battery connector (Figure 1)
2. Slide Latch upwards to remove the battery from the machine (Figure 2)



Figure 1

Figure 2



Notice: Please inform production line leader or master if you found any abnormal..

Fixture list (Spec.)	Qty	Symbol							
Electric screwdriver #1	1								
		Safe	Quality	Order	Fixture	Hear	Look	Do	Static

Prepared : Zhou qui-ling Issued : IE department



Standard Operation Procedure

Document No. disassembly SOP

Station: 4(1/1)

Operation Name : Disassembly Speaker L

Ver. : 0.10 Edit date : 2025/3/26

Step :

1. Loosen the Speaker screws, pull out the Speaker CONN from MB and remove the cable from the hook, then remove the Speaker L from the TOP (Figure 1)

- ❖ Do not touch the eardrum area when taking and assembling
- ❖ The speaker gasket must not fall off or tilting (Figure 2)
- ❖ Torque value: $1.0 \pm 0.2\text{kgf.cm}$
- ❖ Screws cannot slide teeth

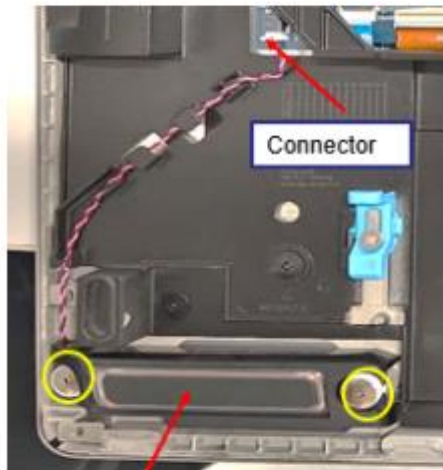


Figure 1

Speaker L

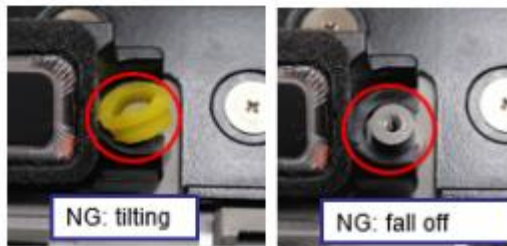


Figure 2

Notice: Please inform production line leader or master if you found any abnormal..

Fixture list (Spec.)	Qty	Symbol							
Electric screwdriver #1	1								
		Safe	Quality	Order	Fixture	Hear	Look	Do	Static

Prepared : Zhou qiu-ling Issued : IE department



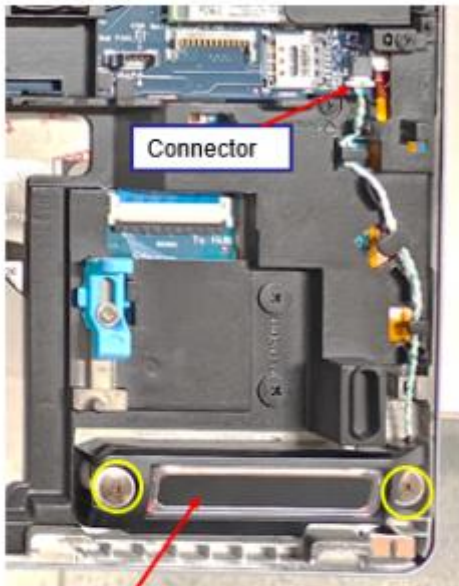
Standard Operation Procedure

Document No. disassembly SOP

Station: 5(1/1)

Operation Name : Disassembly Speaker L

Ver. : 0.10 Edit date : 2025/3/26



Step :

- 1. Loosen the Speaker screws, pull out the Speaker CONN from MB and remove the cable from the hook, then remove the Speaker R from the TOP (Figure 1)

- ❖ Do not touch the eardrum area when taking and assembling
- ❖ The speaker gasket must not fall off or tilting (Figure 2)
- ❖ Torque value: 1.0 ± 0.2kgf.cm
- ❖ Screws cannot slide teeth

Figure 1

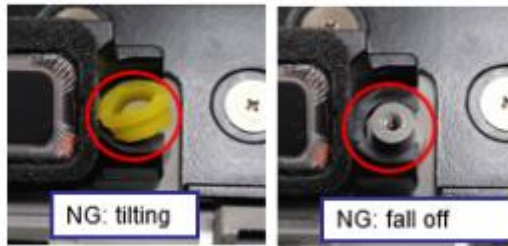


Figure 2

Notice: Please inform production line leader or master if you found any abnormal..

Fixture list (Spec.)	Qty	Symbol							
Electric screwdriver #1	1								
		Safe	Quality	Order	Fixture	Hear	Look	Do	Static

Prepared : Zhou.gui-ling Issued : IE department



Standard Operation Procedure

Document No. disassembly SOP Station: 6(1/1)
Operation Name : Disassembly WWAN Thermal plate Ver. : 0.10 Edit date: 2025/3/26

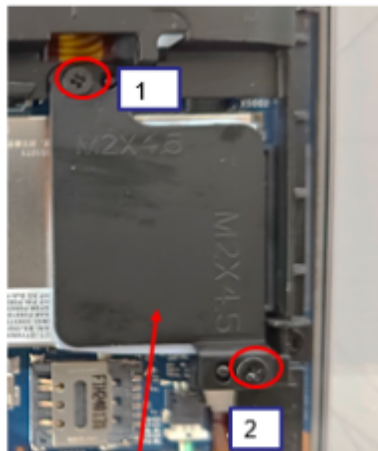


Figure 1

Step :

1. Loosen WWAN Thermal plate Screw*2
 - ❖ Torque value : 2.0 ± 0.2 kgf.cm
 - ❖ Screw type : M2*4.5(6052B0117602)
 - ❖ Screws cannot slide teeth
2. Take off WWAN Thermal plate

WWAN Thermal plate

Notice: Please inform production line leader or master if you found any abnormal..

Fixture list (Spec.)	Qty	Symbol							
Electric screwdriver #1	1								
		Safe	Qual ity	Order	Fixtur e	Hear	Look	Do	Static

Prepared : Zhou.gui-ling Issued : IE department



Standard Operation Procedure

Document No. disassembly SOP

Station: 7(1/1)

Operation Name : Disassembly WWAN Antenna

Ver. : 0.10 Edit date: 2025/3/26

Step :

1. Take off PC form WWAN card , And then remove the antenna terminal (Figure 1)



Figure 1

Notice: Please inform production line leader or master if you found any abnormal..

Fixture list (Spec.)	Qty	Symbol							
		Safe	Quality	Order	Fixture	Hear	Look	Do	Static

Prepared : Zhou qiu-ling Issued : IE department



Standard Operation Procedure

Document No. disassembly SOP

Station: 8(1/1)

Operation Name : Disassembly WLAN Antenna

Ver. : 0.10 Edit date: 2025/3/26

Step :

1. Take off the WLAN card PC chip and Remove the WLAN Antenna from the WLAN CONN . Pull the antenna out of the hook (Figure 1)

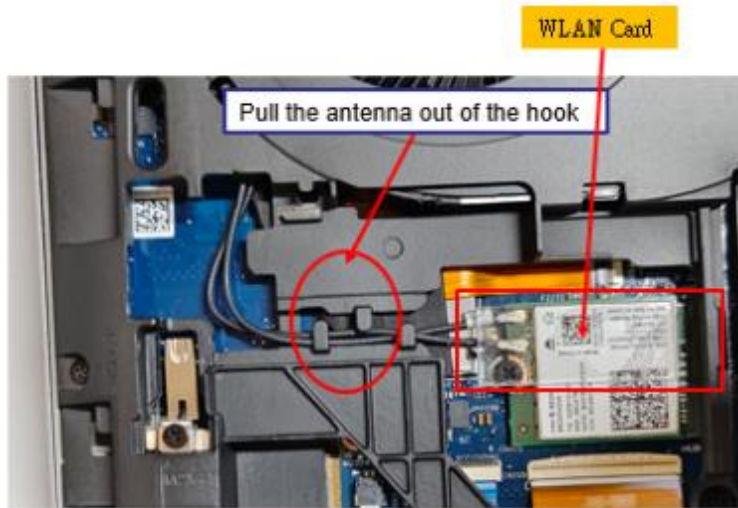


Figure 1

Notice: Please inform production line leader or master if you found any abnormal..

Fixture list (Spec.)	Qty	Symbol							
		Safe	Quality	Order	Fixtur	Hear	Look	Do	Static

Prepared : Zhou qui-ling Issued : IE department



Standard Operation Procedure

Document No. disassembly SOP

Station: 9(1/1)

Operation Name : Loosen D-Frame screw

Ver. : 0.10 Edit date: 2025/3/26

Step :

1. Loosen D-Frame screw (Figure 1)
 - ❖ Torque value: $2 \pm 0.2\text{Kgf.cm}$
 - ❖ Screw model: M2*7 (6052E0103801)*2
 - ❖ Be careful not to slip the screw teeth
 - ❖ Screws must not fall into the interior of the machine



Figure 1

Notice: Please inform production line leader or master if you found any abnormal..

Fixture list (Spec.)	Qty	Symbol							
Electric screwdriver #1	1								
		Safe	Quality	Order	Fixture	Hear	Look	Do	Static

Prepared : Zhou qui-ling Issued : IE department



Standard Operation Procedure

Document No. disassembly SOP

Station: 10(1/1)

Operation Name : Loosen D-Frame screw

Ver. : 0.10 Edit date 2025/3/26

Step :

1. Loosen D-Frame screw (Figure 1/2)
 - ❖ Torque value: $2 \pm 0.2\text{Kgf.cm}$
 - ❖ Screw model: M2.5*2.3(6052B0250801)*4
 - ❖ Be careful not to slip the screw teeth
 - ❖ Screws must not fall into the interior of the machine

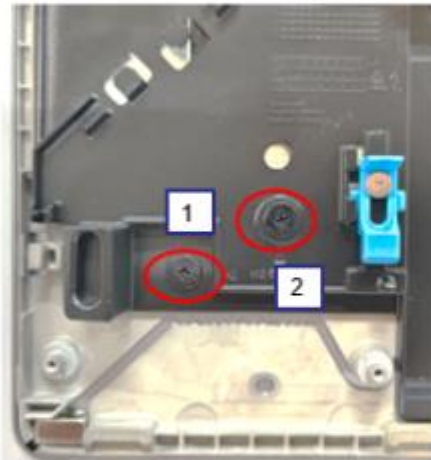


Figure 1

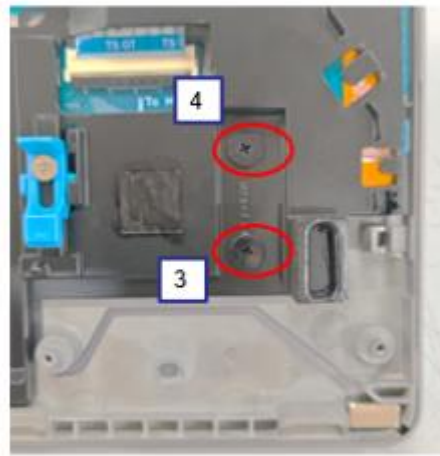


Figure 2

Notice: Please inform production line leader or master if you found any abnormal..

Fixture list (Spec.)	Qty	Symbol							
Electric screwdriver #1	1								
		Safe	Quality	Order	Fixture	Hear	Look	Do	Static

Prepared : Zhou.gui-ling Issued : IE department



Standard Operation Procedure

Document No. disassembly SOP

Station: 11(1/1)

Operation Name : Loosen D-Frame screw

Ver. : 0.10 Edit date : 2025/3/26

Step :



- Loosen D-Frame screw (Figure 1/2)
 - Torque value: $2 \pm 0.2\text{Kgf.cm}$
 - Screw model: M2*4.5(6052E0117602)*9
 - Be careful not to slip the screw teeth
 - Screws must not fall into the interior of the machine



Figure 1

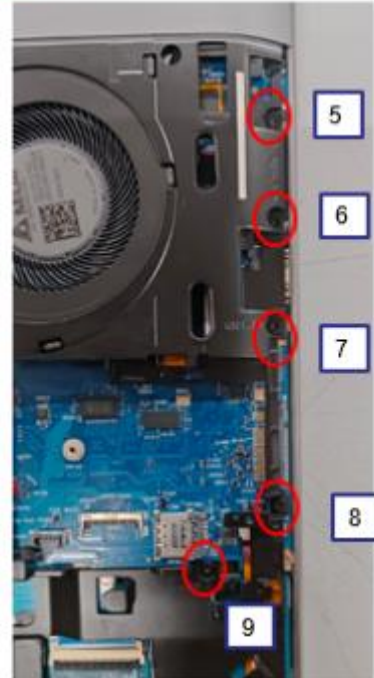


Figure 2

Notice: Please inform production line leader or master if you found any abnormal..

Fixture list (Spec.)	Qty	Symbol							
Electric screwdriver #1	1								
		Safe	Quality	Order	Fixture	Hear	Look	Do	Static

Prepared : Zhou.gui-ling Issued : IE department



Standard Operation Procedure

Document No. disassembly SOP

Station: 12(1/1)

Operation Name : Loosen D-Frame screw

Ver. : 0.10 Edit date : 2025/3/26

Step :

1. Loosen D-Frame screw (Figure 1/2)
 - ❖ Torque value: $2 \pm 0.2\text{Kgf.cm}$
 - ❖ Screw model: M2*4.5(6052E0117602)*8
 - ❖ Be careful not to slip the screw teeth
 - ❖ Screws must not fall into the interior of the machine

Figure 1

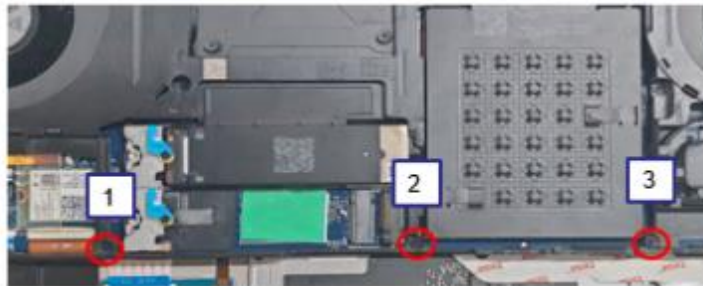


Figure 2

Notice: Please inform production line leader or master if you found any abnormal..

Fixture list (Spec.)	Qty	Symbol							
Electric screwdriver #1	1								
		Safe	Quality	Order	Fixture	Hear	Look	Do	Static

Prepared : Zhou.gui-ling Issued : IE department



Standard Operation Procedure

Document No. disassembly SOP

Station: 13(1/1)

Operation Name : Loosen D-Frame screw

Ver. :0.10 Edit date : 2025/3/26

Step :

1. Loosen D-Frame screw (Figure 1)
 - ❖ Torque value: $2 \pm 0.2\text{Kgf.cm}$
 - ❖ Be careful not to slip the screw teeth
 - ❖ Screws must not fall into the interior of the machine



Figure 1

Notice: Please inform production line leader or master if you found any abnormal..

Fixture list (Spec.)	Qty	Symbol							
Electric screwdriver #1	1								
		Safe	Quality	Order	Fixture	Hear	Look	Do	Static

Prepared : Zhou qui-ling Issued : IE department



Standard Operation Procedure

Document No. : Gemtree 18 disassembly SOP

Station: 14(1/1)

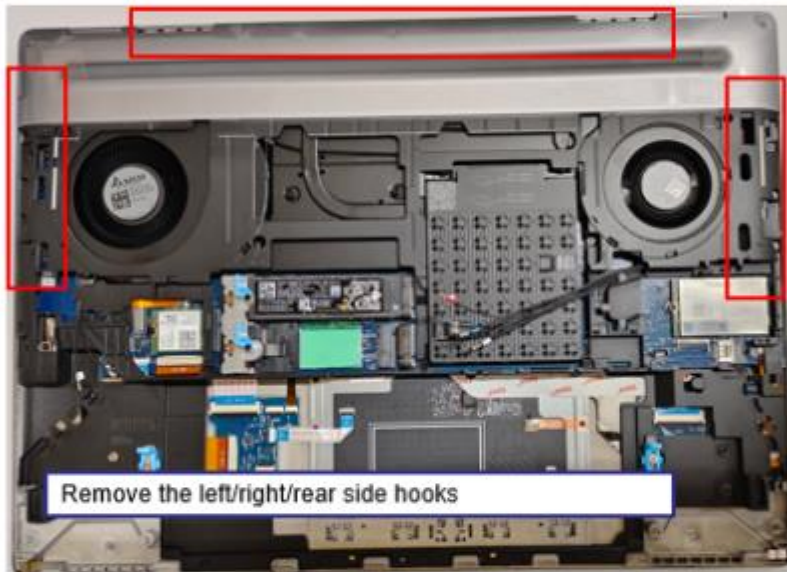
Operation Name : Disassembly D Frame

Ver. : 0.10 Edit date : 2025/3/26

Step :

- 1. Disassembly D Frame (Figure 1)

Figure 1



Notice: Please inform production line leader or master if you found any abnormal..

Fixture list (Spec.)	Qty	Symbol							
		Safe	Quality	Order	Fixture	Hear	Look	Do	Static

Prepared : Zhou.qui-ling Issued : IE department



Standard Operation Procedure

Document No. : Gemtree 18 disassembly SOP

Station: 15(1/1)

Operation Name : Disassembly DDR Shilding

Ver. : 0.10 Edit date: 2025/3/26

Step :


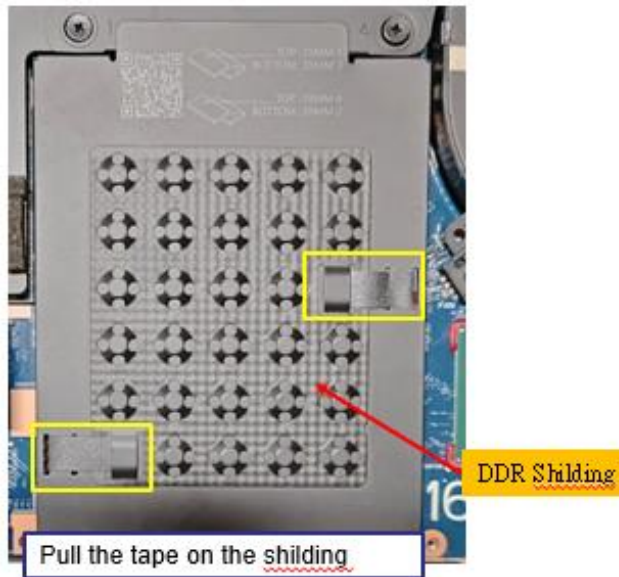








-  1. Disassembly DDR Shilding (Figure 1)

Figure 1



Notice: Please inform production line leader or master if you found any abnormal.

Fixture list (Spec.)	Qty	Symbol							
									
		Safe	Quality	Order	Fixture	Hear	Look	Do	Static

Prepared : Zhou qui-ling Issued : IE department



Standard Operation Procedure

Document No. disassembly SOP

Station: 17(1/1)

Operation Name : Disassembly TOP SSD

Ver. : 0.10 Edit date : 2025/3/26

Step :

1. Rotate Latch and remove the upper SSD&SSD shilding (Figure 1)
2. Open the SSD shilding and remove the SSD (Figure 2)

Figure 1



Figure 2



Notice: Please inform production line leader or master if you found any abnormal..

Fixture list (Spec.)	Qty	Symbol							
		Safe	Quality	Order	Fixture	Hear	Look	Do	Static

Prepared : Zhou.gui-ling Issued : IE department



Standard Operation Procedure

Document No. disassembly SOP

Station: 18(1/1)

Operation Name : Disassembly Buttom SSD

Ver. : 0.10 Edit date: 2025/3/26

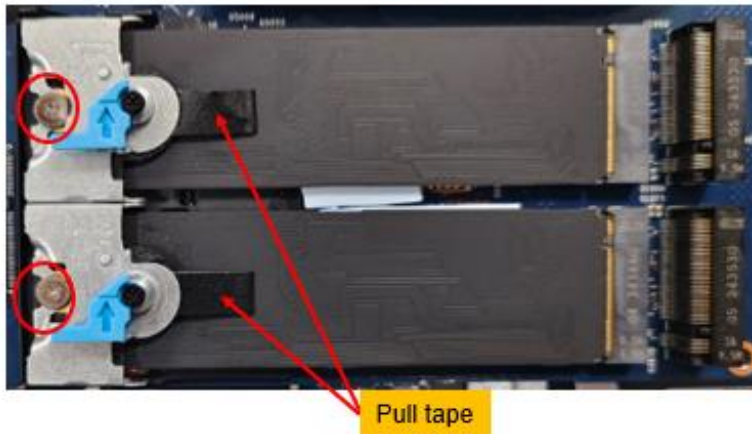
Step :



1. loosen the SSD screws, open the SSD House BRKT, and remove the SSD (Figure 1)

- ❖ Torque value: 1.5 ± 0.2 kgf.cm
- ❖ Screw model: M2*2 (6052B0156201)
- ❖ Be careful not to slip the screw teeth
- ❖ Screws must not fall into the interior of the machine

Figure 1



Notice: Please inform production line leader or master if you found any abnormal..

Fixture list (Spec.)	Qty	Symbol							
		Safe	Quality	Order	Fixture	Hear	Look	Do	Static

Prepared : Zhou.gui-ling Issued : IE department



Standard Operation Procedure

Document No. disassembly SOP

Station: 19(1/1)

Operation Name : Disassembly thermal

Ver. : 0.10 Edit date: 2025/3/26

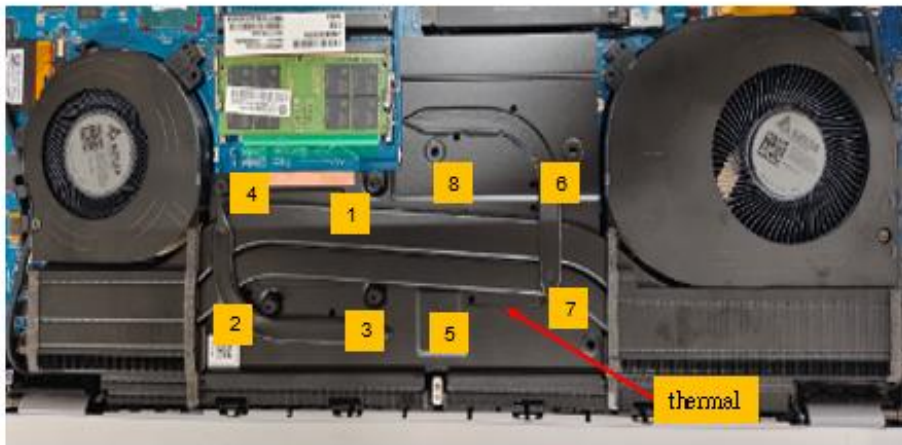
Step :



1. Loosen thermal set screws ' and then take off thermal

❖ Torque value: 1.5 ± 0.2 kgf.cm

❖ Be careful not to slip the screw teeth



Notice: Please inform production line leader or master if you found any abnormal..

Fixture list (Spec.)	Qty	Symbol							
Electric screwdriver #1	1								
		Safe	Quality	Order	Fixture	Hear	Look	Do	Static

Prepared : Zhou.wei-ling Issued : IE department



Standard Operation Procedure

Document No.

disassembly SOP

Station: 20(1/1)

Operation Name : Disassembly EDP/Antenna cable

Ver. : 0.10 Edit date : 2025/3/26

Step :











-  1. Open the connector cover and remove the EDP FFC (Figure 1)
-  2. Pull the DEP cable and antenna out of Hook in sequence



Figure 1

Notice: Please inform production line leader or master if you found any abnormal...

Fixture list (Spec.)	Qty	Symbol							
									
		Safe	Quality	Order	Fixture	Hear	Look	Do	Static

Prepared : Zhou.gui-ling Issued : IE department



Standard Operation Procedure

Document No.

disassembly SOP

Station: 21(1/1)

Operation Name : Disassembly HUB/Antenna cable

Ver. : 0.10 Edit date : 2025/3/26

Step :

1. Open the connector cover and remove the HUB FFC (Figure 1)
2. Pull the HUB cable and antenna out of the hooks in sequence



Figure 1

Notice: Please inform production line leader or master if you found any abnormal..

Fixture list (Spec.)	Qty	Symbol							
		Safe	Quality	Order	Fixture	Hear	Look	Do	Static

Prepared : Zhou.qui-ling Issued : IE department



Standard Operation Procedure

Document No. disassembly SOP

Station: 23(1/1)

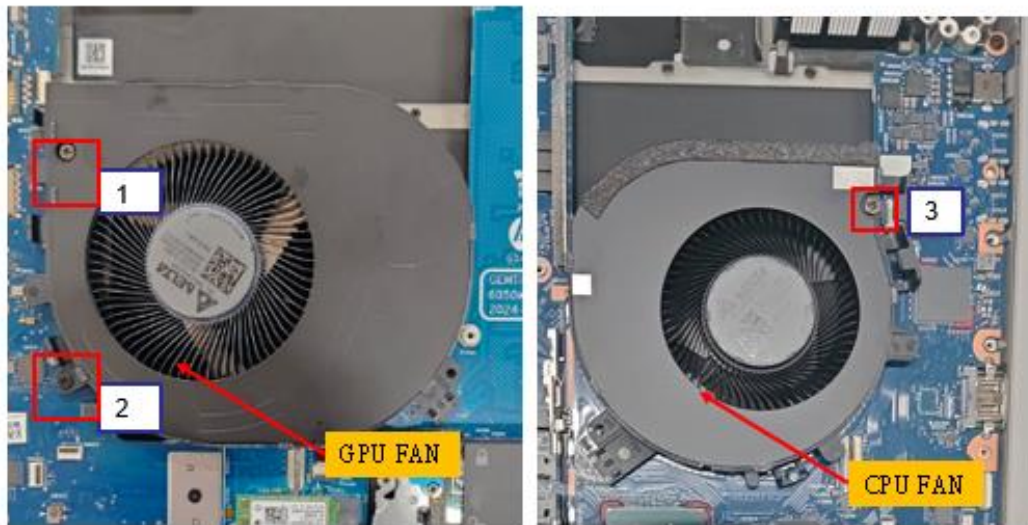
Operation Name : Disassembly Fan-L/R

Ver. : 0.10 Edit date: 2025/3/26

Step :

1. Loosen FAN Set screw*2 , Remove Fan-L/R(Figures 1)
 - ❖ Torque value : $1.5 \pm 0.2\text{Kgf.cm}$
 - ❖ Be careful not to slip the screw teeth

Figure 1



Notice: Please inform production line leader or master if you found any abnormal..

Fixture list (Spec.)	Qty	Symbol							
Electric screwdriver #1	1								
		Safe	Quality	Order	Fixture	Hear	Look	Do	Static

Prepared : Zhou gui-ling Issued : IE department



Standard Operation Procedure

Document No. disassembly SOP

Station: 24(1/1)

Operation Name : Disassembly DDR

Ver. : 0.10 Edit date : 2025/3/26



Step :

- 1. Remove DIMM1/DIMM3/DIMM4/DIMM2 from MB in sequence (Figure 2)
- 2. Remove the thermal pad * 2 from the DDR card slot (Figure 1)

On the CPU side
 Top: DIMM 1 Bottom: DIMM 3
 On the battery side
 Top: DIMM 4 Bottom: DIMM 2

RAM



DIMM1/2/3/4



DIMM2



DIMM1

Notice: Please inform production line leader or master if you found any abnormal..

Fixture list (Spec.)	Qty	Symbol							
		Safe	Quality	Order	Fixture	Hear	Look	Do	Static

Prepared : Zhou qui-ling Issued : IE department



Standard Operation Procedure

Document No. disassembly SOP

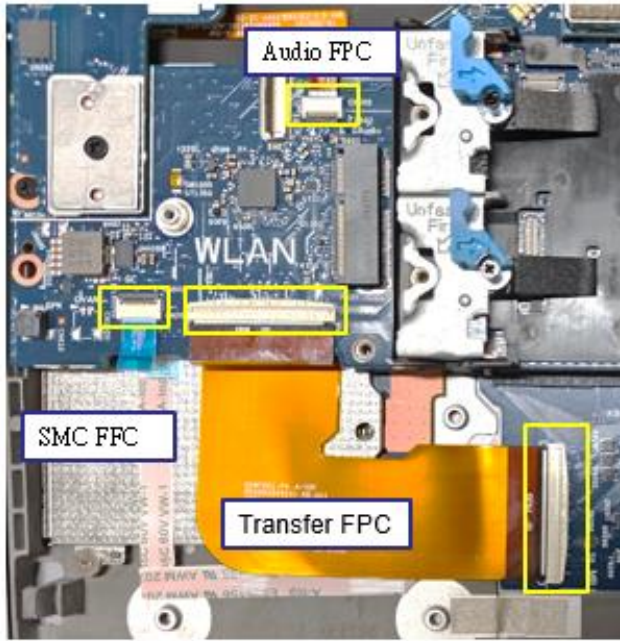
Station: 25(1/1)

Operation Name : Disassembly FPC/FFC

Ver. : 0.10 Edit date : 2025/3/26

Step :

1. Open the CNTR cover and remove the Audio FPC/SMC FFC/SD FPC/Trans FPC (Figure 1)



Notice: Please inform production line leader or master if you found any abnormal..

Fixture list (Spec.)	Qty	Symbol							
		Safe	Quality	Order	Fixture	Hear	Look	Do	Static

Prepared : Zhou.gui-ling Issued : IE department



Standard Operation Procedure

Document No.

disassembly SOP

Station: 26(1/1)

Operation Name : Disassembly Power FPC/Finger FFC

Ver. : 0.10

Edit date : 2025/3/26

Step :

- 1. Open the CNTR cover and remove the Power/Finger FFC (Figure 1 /2)



Figure 1

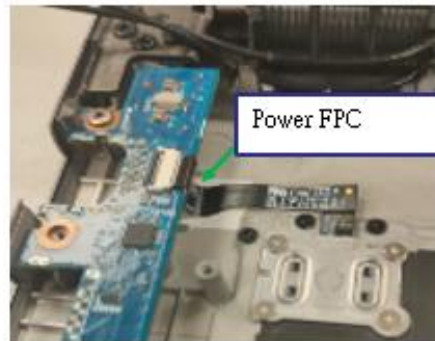


Figure 2

Notice: Please inform production line leader or master if you found any abnormal..

Fixture list (\$pec.)	Qty	Symbol							
		Safe	Qual ity	Order	Fixtur e	Hear	Look	Do	Static

Prepared : Zhou qiu-ling

Issued : IE department



Standard Operation Procedure

Document No. disassembly SOP

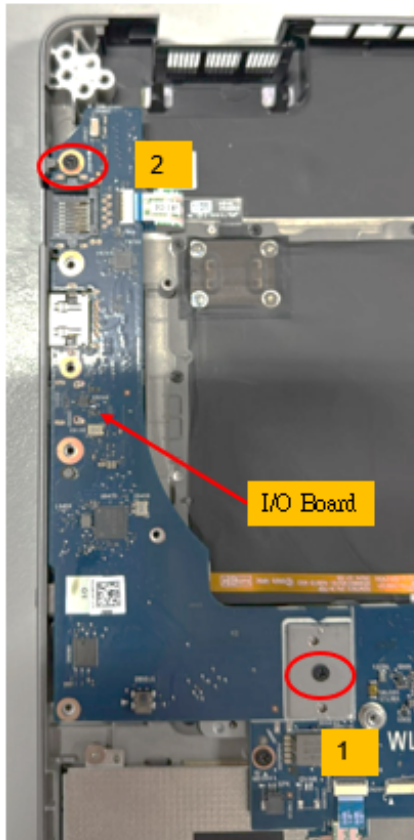
Station: 27(1/1)

Operation Name : Disassembly IO/B

Ver. : 0.10 Edit date : 2025/3/26

Step :

1. Loosen screw*2 and then take off IO/B (Figure 1)
 - ❖ Torque value: $2 \pm 0.2\text{kgf.cm}$
 - ❖ Screw model: M2*4.5(6052B0117602)
 - ❖ The screw lock attachment should not be skewed or have loose teeth
2. Use a fixture to remove the Interposer (102 PIN) from MB



Notice: Please inform production line leader or master if you found any abnormal..

Fixture list (Spec.)	Qty	Symbol							
Electric screwdriver #1	1								
		Safe	Quality	Order	Fixture	Hear	Look	Do	Static

Prepared : Zhou gui-ling Issued : IE department



Standard Operation Procedure

Document No. disassembly SOP

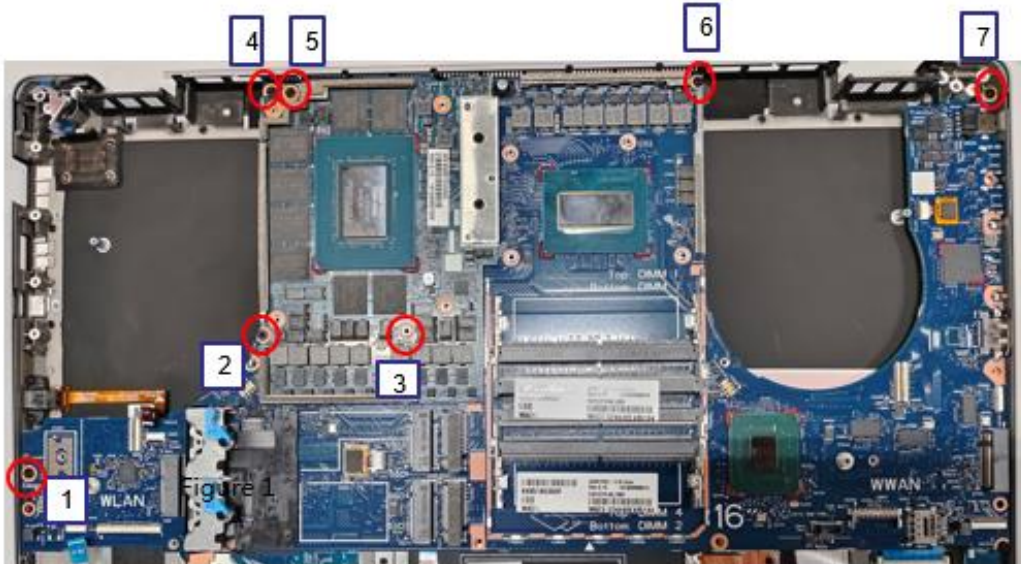
Station: 28(1/1)

Operation Name : Disassembly M/B screw

Ver. : 0.10 Edit date : 2025/3/26

Step :

- 1. Loosen M/B & GPU screw (Figure 1)
 - ❖ Torque value: $2 \pm 0.2\text{kgf.cm}$
 - ❖ Screw model: M2*4.5(6052B0117602)
 - ❖ The screw lock attachment should not be skewed or have loose teeth



图一

Notice: Please inform production line leader or master if you found any abnormal..

Fixture list (Spec.)	Qty	Symbol							
Electric screwdriver #1	1								
		Safe	Quality	Order	Fixture	Hear	Look	Do	Static

Prepared : Zhou gui-ling Issued : IE department



Standard Operation Procedure

Document No. disassembly SOP

Station: 29(1/1)

Operation Name : Disassembly GPU/B

Ver. : 0.10 Edit date: 2025/3/26

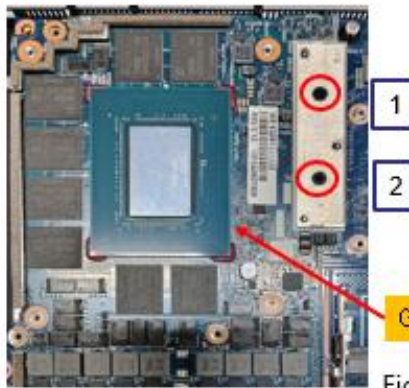


Figure 1

Step :

1. Remove GPU/B screws (Figure 1)
 - ❖ Torque value: $2 \pm 0.2 \text{ kgf.cm}$
 - ❖ Screw model: M2*7(6052B0103801)
 - ❖ The screw lock attachment should not be skewed or have loose teeth
2. Take the GPU/B and clamp the Interposer with a fixture to remove it from the MB(Figure 2)

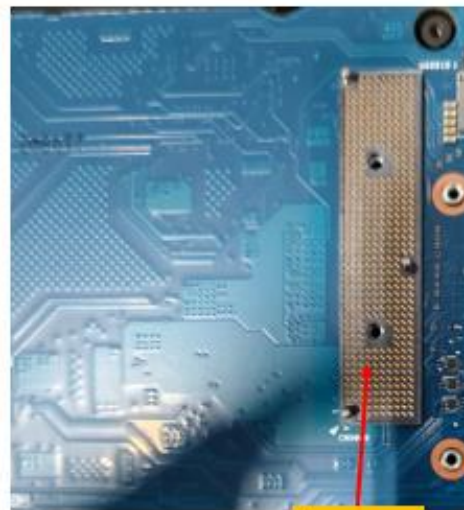
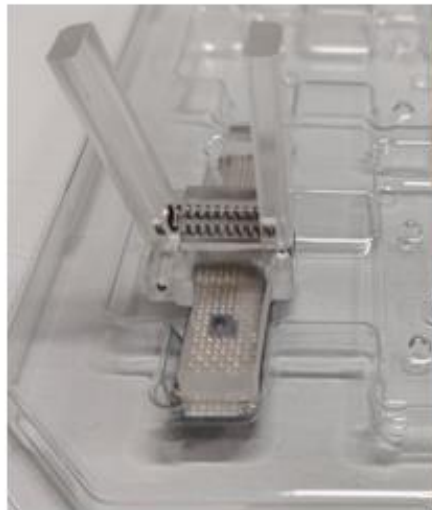


Figure 2

Interposer

Notice: Please inform production line leader or master if you found any abnormal..

Fixture list (Spec.)	Qty	Symbol							
Electric screwdriver #1	1								
		Safe	Quality	Order	Fixture	Hear	Look	Do	Static

Prepared : Zhou.qui-ling Issued : IE department



Standard Operation Procedure

Document No.

disassembly SOP

Station: 30(1/1)

Operation Name : Disassembly M/B

Ver. : 0.10 Edit date : 2025/3/26

Step :

1. Remove MB from TOP from the bottom left side (Figure 1)

Figure 1



Disassembly MB from the left side

Notice: Please inform production line leader or master if you found any abnormal..

Fixture list (Spec.)	Qty	Symbol							
		Safe	Quality	Order	Fixture	Hear	Look	Do	Static

Prepared : Zhou qui-ling Issued : IE department



Standard Operation Procedure

Document No. disassembly SOP

Station: 31(1/1)

Operation Name : Disassembly Charge Plate

Ver. : 0.10 Edit date : 2025/3/26

Step :



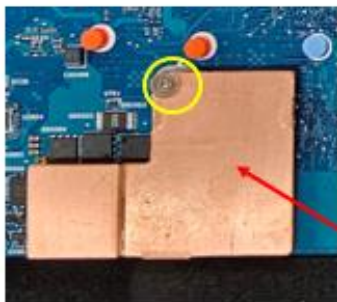
1. Loosen the screws and remove the charge plate (Figure 1)

❖ Torque value: $1.5 \pm 0.2 \text{ kgf.cm}$

❖ Screw model: M2*2 (6052E0156201)

❖ The screw lock attachment should not be skewed or have loose teeth

Figure 1



charge plate

Notice: Please inform production line leader or master if you found any abnormal..

Fixture list (Spec.)	Qty	Symbol							
Electric screwdriver #1	1								
		Safe	Quality	Order	Fixture	Hear	Look	Do	Static

Prepared : Zhou.gui-ling Issued : IE department



Standard Operation Procedure

Document No. disassembly SOP

Station: 33(1/1)

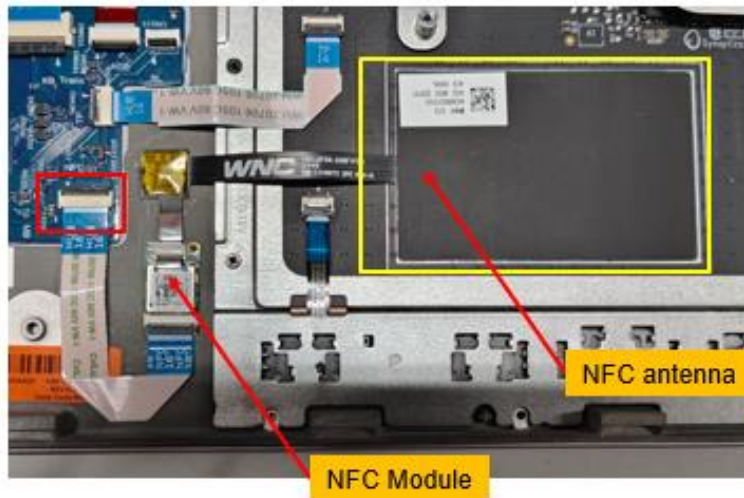
Operation Name : Disassembly NFC

Ver. : 0.10 Edit date : 2025/3/26

Step :

1. Open the NFC cover, pull out the FFC, and sequentially remove the NFC Module & NFC Antenna from the Top (Figure 1)

Figure 1



Notice: Please inform production line leader or master if you found any abnormal..

Fixture list (Spec.)	Qty	Symbol							
		Safe	Quality	Order	Fixtur e	Hear	Look	Do	Static

Prepared : Zhou.gui-ling Issued : IE department



Standard Operation Procedure

Document No. disassembly SOP

Station: 34(1/1)

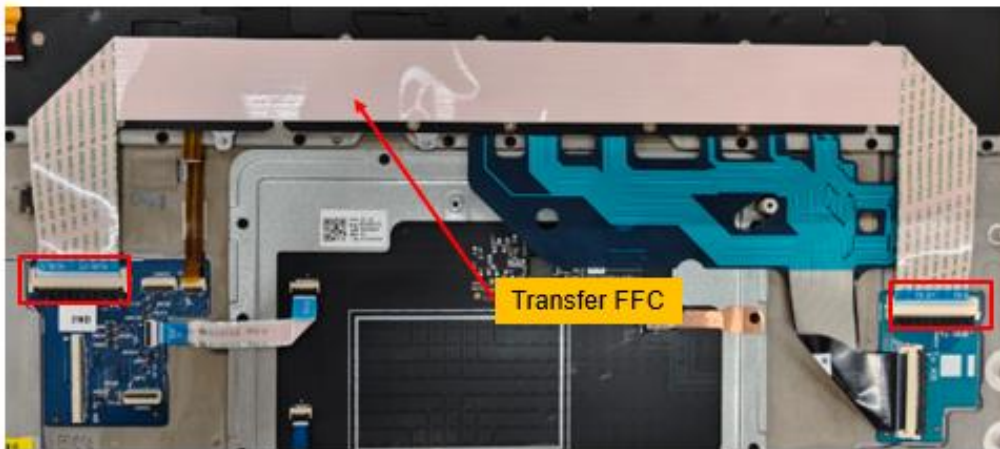
Operation Name : Disassembly Transfer FFC

Ver. : 0.10 Edit date: 2025/3/26

Step :

1. Open the connector cover, pull out the FFC and remove the Transfer FFC.

Figure 1



Notice: Please inform production line leader or master if you found any abnormal..

Fixture list (Spec.)	Qty	Symbol							
		Safe	Quality	Order	Fixtur e	Hear	Look	Do	Static

Prepared : Zhou.gui-ling Issued : IE department



Standard Operation Procedure

Document No. disassembly SOP

Station: 35(1/1)

Operation Name : Disassembly HUB Board

Ver. : 0.10 Edit date: 2025/3/26

Step :










1.  Open the connector cover, pull out the FFC, and remove the HUB Board.

Figure 1



Notice: Please inform production line leader or master if you found any abnormal..

Fixture list (Spec.)	Qty	Symbol							
									
		Safe	Quality	Order	Fixtur e	Hear	Look	Do	Static

Prepared : Zhou.gui-ling Issued : IE department



Standard Operation Procedure

Document No. disassembly SOP

Station: 36(1/1)

Operation Name : Disassembly Transfer Board

Ver. : 0.10 Edit date : 2025/3/26

Step :


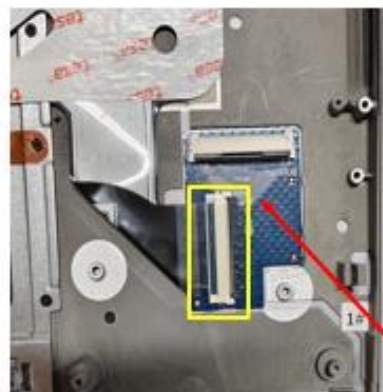








1.  Open the connector cover, pull out the KB membrane, and remove the Transfer Board.

Figure 1



Transfer Board

Notice: Please inform production line leader or master if you found any abnormal..

Fixture list (Spec.)	Qty	Symbol							
									
		Safe	Quality	Order	Fixture	Hear	Look	Do	Static

Prepared : Zhou.qi-ling Issued : IE department



Standard Operation Procedure

Document No. disassembly SOP

Station: 37(1/1)

Operation Name : Disassembly finger or Power

Ver. : 0.10 Edit date : 2025/3/26

Step :

1. Tear off the waterproof rubber (Figure 1)
2. Loosen the screws and remove the finger module or power module (Figure 2)
 - ❖ Torque value: 0.4~0.6Kgf.cm
 - ❖ Screw model: M1.2 * 2 (6052B0569602)
 - ❖ Be careful not to slip the screw teeth.

Figure 1

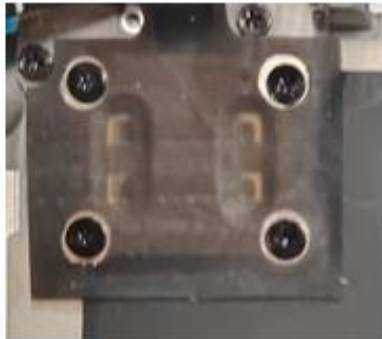
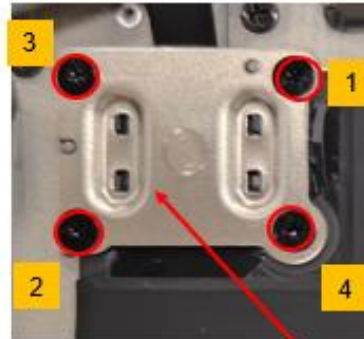


Figure 2



Finger or Power

Notice: Please inform production line leader or master if you found any abnormal..

Fixture list (Spec.)	Qty	Symbol							
Electric screwdriver #0	1								
		Safe	Quality	Order	Fixture	Hear	Look	Do	Static

Prepared : Zhou.gui-ling Issued : IE department



Standard Operation Procedure

Document No.

disassembly SOP

Station: 38(1/1)

Operation Name : Disassembly Audio Jack

Ver. : 0.10 Edit date : 2025/3/26

Step :

1. Remove the Audio Jack screws and remove the Audio Jack (Figure 1)
 - ❖ Torque value: 1.5 ± 0.2 Kgf.cm
 - ❖ Screw model: M2*4.5(6052B0117602)*2
 - ❖ Be careful not to slip the screw teeth

Figure 1



Notice: Please inform production line leader or master if you found any abnormal..

Fixture list (Spec.)	Qty	Symbol							
Electric screwdriver #1	1								
		Safe	Quality	Order	Fixture	Hear	Look	Do	Static

Prepared : Zhou.gui-ling Issued : IE department



Standard Operation Procedure

Document No.

disassembly SOP

Station: 39(1/1)

Operation Name : Disassembly Touch pad module

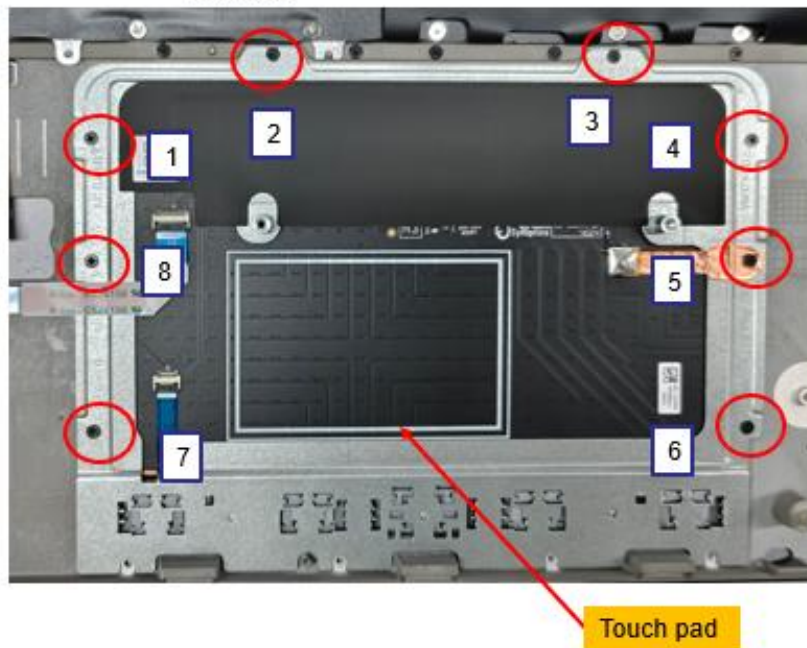
Ver. : 0.10 Edit date : 2025/3/26

Step :

1. Loosen screws and remove the Touch pad(Figure 1)

- ❖ Torque value: $1.0 \pm 0.2\text{Kgf.cm}$
- ❖ Screw model: M1.6*1.8 (6052B0508901)* 8
- ❖ Be careful not to slip the screw teeth

Figure 1



Notice: Please inform production line leader or master if you found any abnormal..

Fixture list (Spec.)	Qty	Symbol							
Electric screwdriver #0	1								
		Safe	Quality	Order	Fixture	Hear	Look	Do	Static

Prepared : Zhou qui-ling Issued : IE department



Standard Operation Procedure

Document No. disassembly SOP

Station: 40(1/1)

Operation Name : Disassembly Lattice

Ver. : 0.10 Edit date : 2025/3/26

Step :

1. Loosen screws and remove the Lattice (Figure 1)
 - ❖ Torque value: $1.0 \pm 0.2\text{Kgf.cm}$
 - ❖ Screw model: M1.6*1.8 (6052B0508901)* 27
 - ❖ Be careful not to slip the screw teeth

Figure 1



Lattice

Notice: Please inform production line leader or master if you found any abnormal..

Fixture list (Spec.)	Qty	Symbol							
Electric screwdriver #0	1								
		Safe	Quality	Order	Fixture	Hear	Look	Do	Static

Prepared : Zhou.gui-ling Issued : IE department



Standard Operation Procedure

Document No. disassembly SOP

Station: 41(1/1)

Operation Name : Disassembly Bezel Trim

Ver. : 0.10 Edit date : 2025/3/26

Step :

1. Use tweezers to remove the bezel trim (Figure 1/2/3)

Figure 1



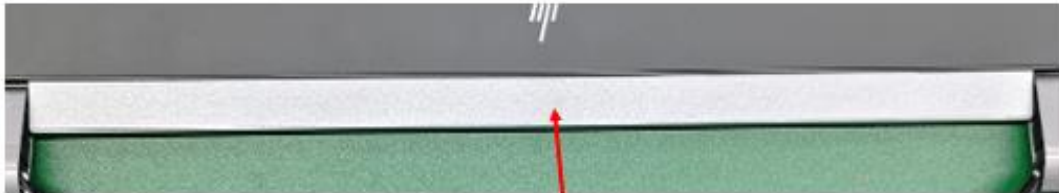
Bezel Trim L

Figure 2



Bezel Trim R

Figure 3



Bezel Trim M

Notice: Please inform production line leader or master if you found any abnormal..

Fixture list (Spec.)	Qty	Symbol							
		Safe	Quality	Order	Fixture	Hear	Look	Do	Static

Prepared : Zhou.gui-ling Issued : IE department



Standard Operation Procedure

Document No. disassembly SOP

Station: 42(1/1)

Operation Name : Disassembly Bezel

Ver. : 0.10 Edit date : 2025/3/26

For N-touch

Step :



1. Use a heat gun to heat Bezel and soften the glue. Separate Bezel from the panel in a clockwise direction from the top left corner (Figure 1)

❖ When heating, heat evenly and do not concentrate on one point

❖ Heating time: 25 S

❖ Heating temperature: 60 °C

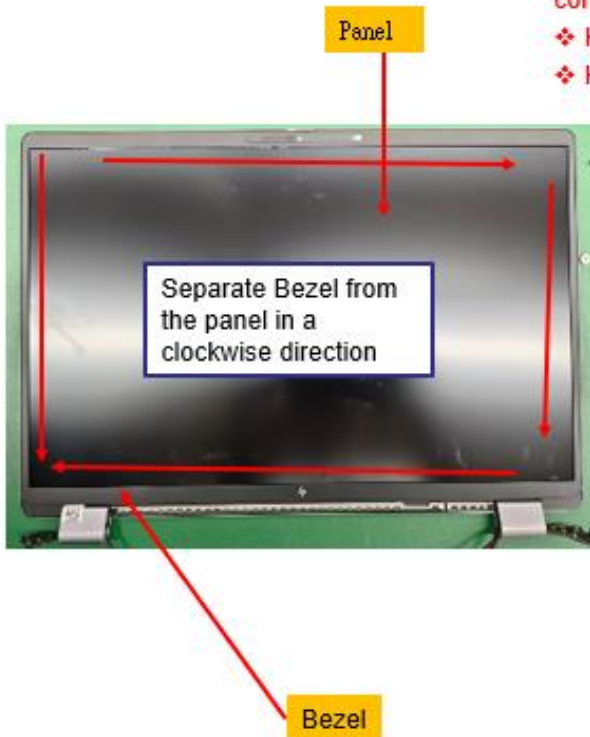


Figure 1

Notice: Please inform production line leader or master if you found any abnormal..

Fixture list (Spec.)	Qty	Symbol							
		Safe	Quality	Order	Fixture	Hear	Look	Do	Static

Prepared : Zhou.gui-ling Issued : IE department



Standard Operation Procedure

Document No.

disassembly SOP

Station: 45(1/1)

Operation Name : Disassembly hinge cap holder

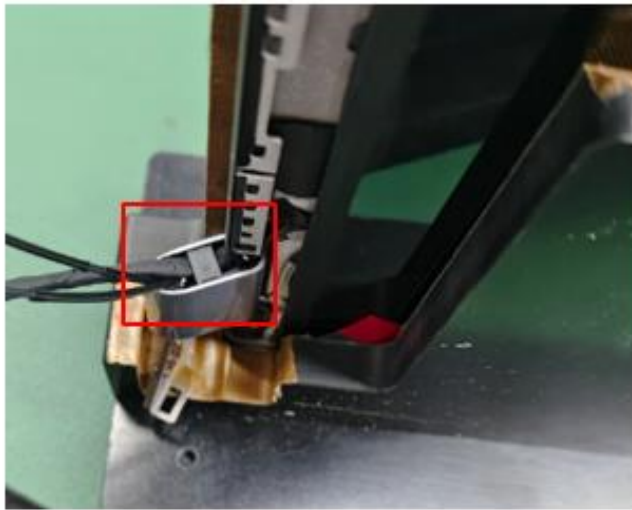
Ver. : 0.10 Edit date : 2025/3/26

Step :



1. Use a wire rod to lift the hinge cap holder (Figure 1)

Figure 1



Notice: Please inform production line leader or master if you found any abnormal..

Fixture list (Spec.)	Qty	Symbol							
		Safe	Quality	Order	Fixture	Hear	Look	Do	Static

Prepared : Zhou qui-ling Issued : IE department



Standard Operation Procedure

Document No. disassembly SOP

Station: 46(1/1)

Operation Name : Disassembly hinge

Ver. : 0.10 Edit date: 2025/3/26

Step :

- ☑ 1. Loosen the left and right hinge screws and remove the hinge (Figure 1/2)
 - ❖ Torque: 3.5 ± 0.2 kgf.cm
 - ❖ Screw model: M2.5*2.3L (6052B0250801)
 - ❖ Screws cannot slide teeth

Figure 1

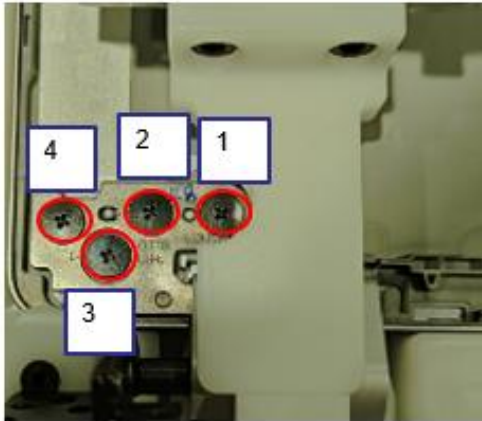
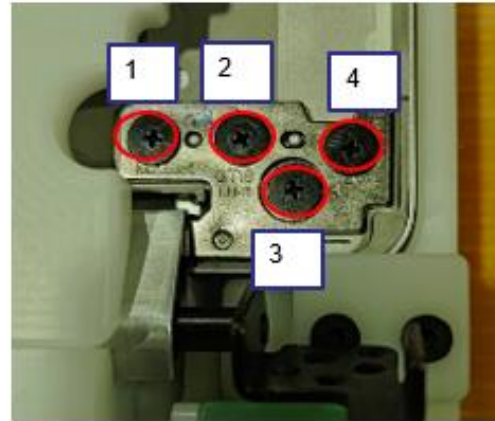


Figure 2



Notice: Please inform production line leader or master if you found any abnormal..

Fixture list (Spec.)	Qty	Symbol							
Electric screwdriver #1	1								
		Safe	Quality	Order	Fixture	Hear	Look	Do	Static

Prepared : Zhou.qui-ling Issued : IE department



Standard Operation Procedure

Document No. disassembly SOP

Station: 47(1/1)

Operation Name : Disassembly panel

Ver. : 0.10 Edit date : 2025/3/26

Step :

- 1. Use tweezers to extract 2 pieces of easy to pull glue from the ground sides (Figure 1/2/3)
- 2. Remove the Panel

Use tweezers to grip the adhesive and rotate it, then wrap the adhesive around the tweezers



Figure 1

Rotate 3-5 turns to confirm that the adhesive is wrapped in the tweezers and then extract the adhesive outward



Figure 2

Rotate the tweezers while pulling, wrap the adhesive onto the tweezers until the adhesive is completely pulled out

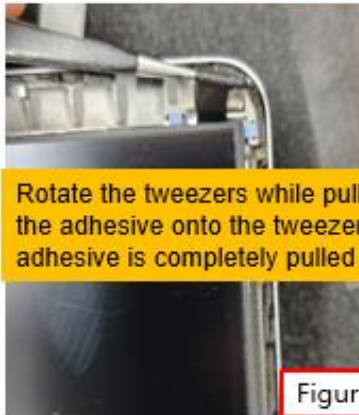


Figure 3

Notice: Please inform production line leader or master if you found any abnormal.

Fixture list (Spec.)	Qty	Symbol							
tweezers	1								
		Safe	Quality	Order	Fixtur e	Hear	Look	Do	Static

Prepared : Zhou.gui-ling Issued : IE department



Standard Operation Procedure

Document No. disassembly SOP

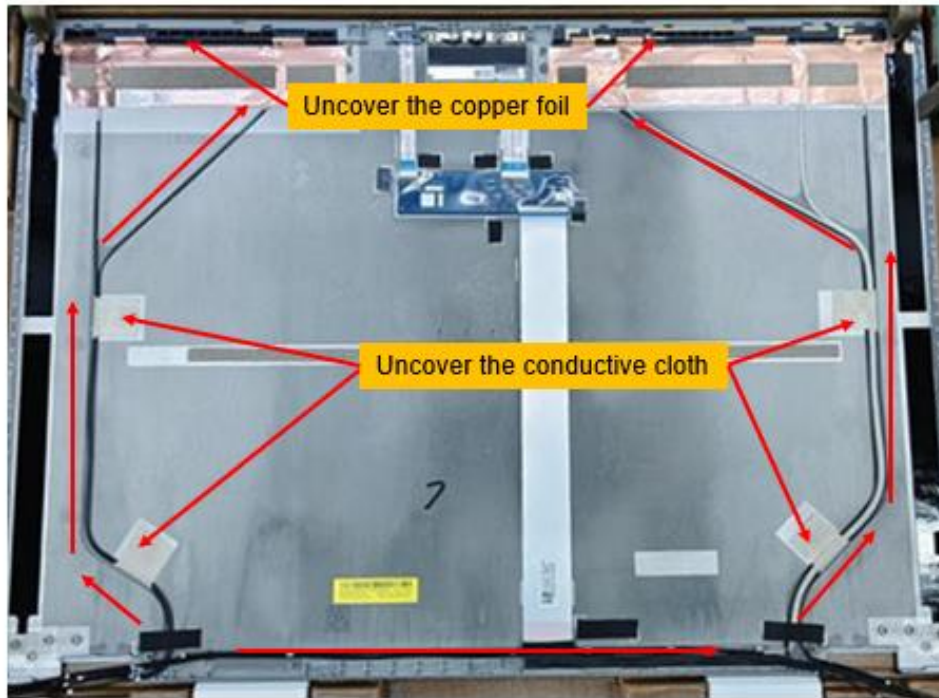
Station: 48(1/1)

Operation Name : Disassembly antenna

Ver. : 0.10 Edit date : 2025/3/26

Step :

1. According to the logical path, remove the antenna in sequence, tear off the conductive cloth, uncover the copper foil, and remove the antenna



Notice: Please inform production line leader or master if you found any abnormal..

Fixture list (Spec.)	Qty	Symbol							
		Safe	Quality	Order	Fixture	Hear	Look	Do	Static

Prepared : Zhou.gui-ling Issued : IE department



Standard Operation Procedure

Document No.




disassembly SOP

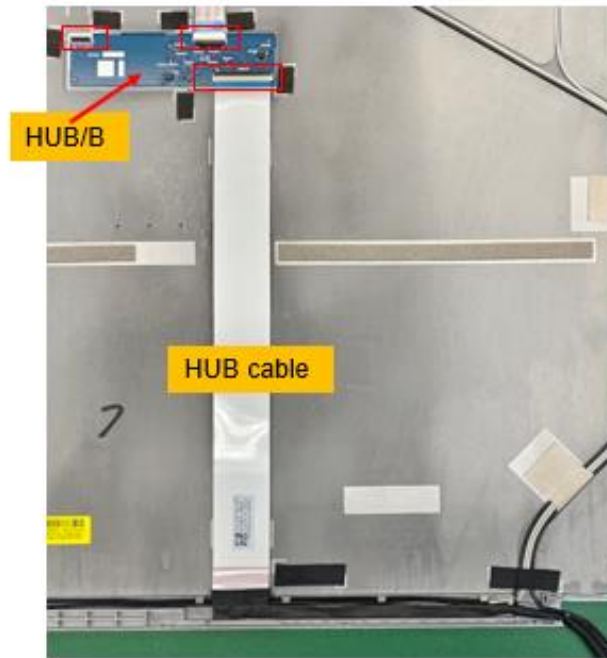
Station: 49(1/1)

Operation Name : Disassembly Camera/ALS/FPC/FPC









Ver. : 0.10 Edit date : 2025/3/26

Step :

-  1. Open HUB/B Connector and remove FFC/FPC
-  2. Remove HUB cable
-  3. Remove HUB/B



Notice: Please inform production line leader or master if you found any abnormal..

Fixture list (Spec.)	Qty	Symbol							
									
		Safe	Quality	Order	Fixture	Hear	Look	Do	Static

Prepared : Zhou qui-ling Issued : IE department

EL-MF877-00
Template Revision **D**

Page 50

last updated May-2022

HP Inc. instructions for this template are available at [EL-MF877-01](#)



Standard Operation Procedure

Document No. disassembly SOP

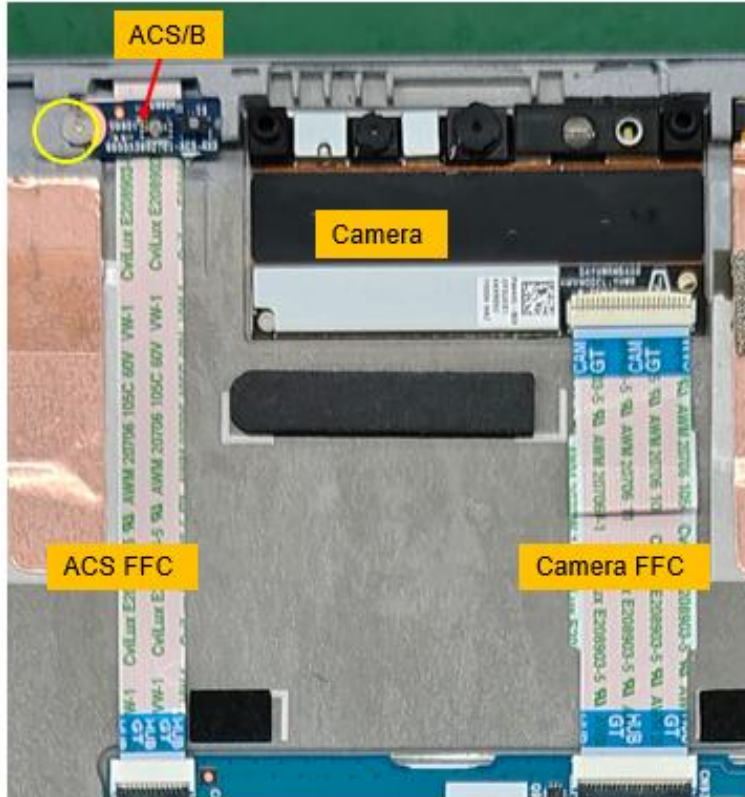
Station: 50(1/1)

Operation Name : Disassembly Camera/ACS

Ver. : 0.10 Edit date : 2025/3/26

Step :

1. Loosen the ACS screws and remove the ACS/B
2. Remove camera & camera FFC
 - ❖ Torque value: 0.4~0.6Kgf.cm
 - ❖ Screw model: M1.2 * 2 (6052B0569602)
 - ❖ Be careful not to slip the screw teeth



Notice: Please inform production line leader or master if you found any abnormal..

Fixture list (Spec.)	Qty	Symbol							
Electric screwdriver #0	1								
		Safe	Quality	Order	Fixtures	Hear	Look	Do	Static

Prepared : Zhou.gui-ling Issued : IE department