

Interactive System Board Viewer

HP Engage Go 10 Mobile System

Welcome to the interactive System Board for the
HP Engage Go 10 Mobile System

Here's how to use it...

[Zoomable View](#) (Click the link to navigate to the viewer)

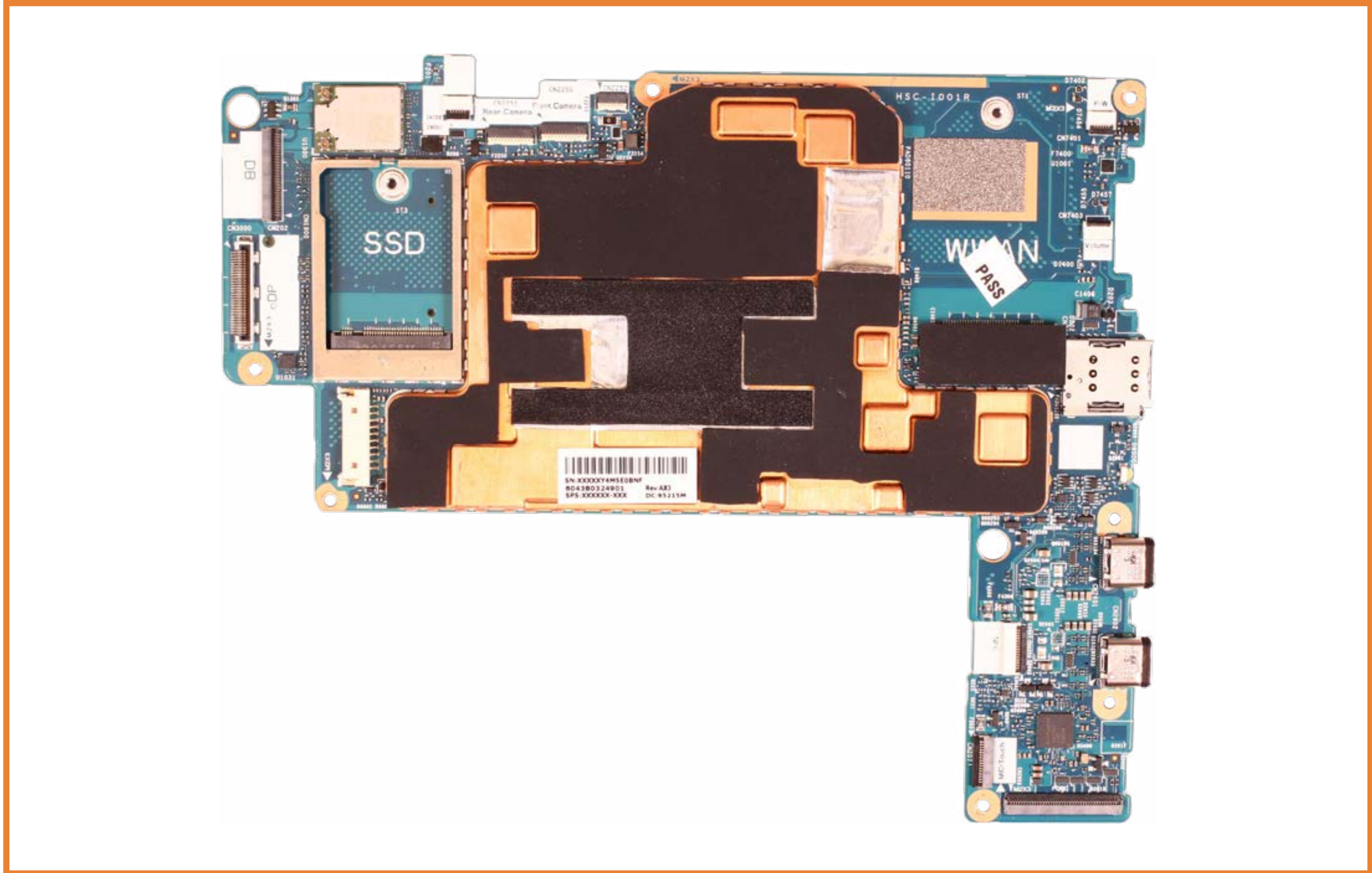
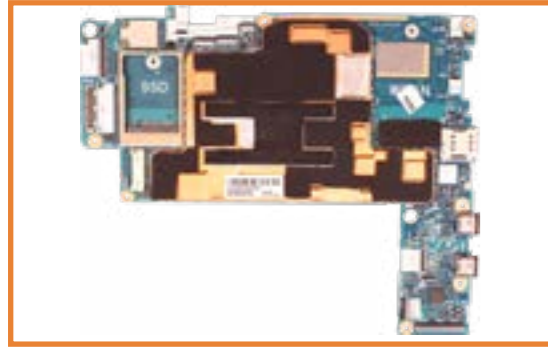
On the Zoomable View page, you will find the viewer's zoom navigation links above the viewer on the left-hand side. You can choose from four levels of magnification: 1x, 2x, 3x, and 4x.

1x: The default magnification is 1x and at this magnification you can view the location of a feature by selecting it from the numbered list on the left.

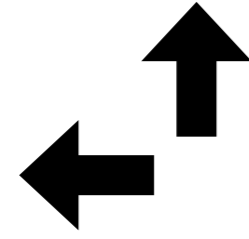
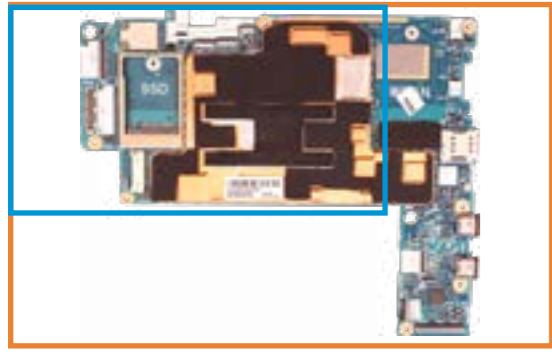
2x, 3x, 4x: When you choose a greater magnification level, you use the navigation arrows and numbered features list to focus on the feature that you wish to review.

That's it!

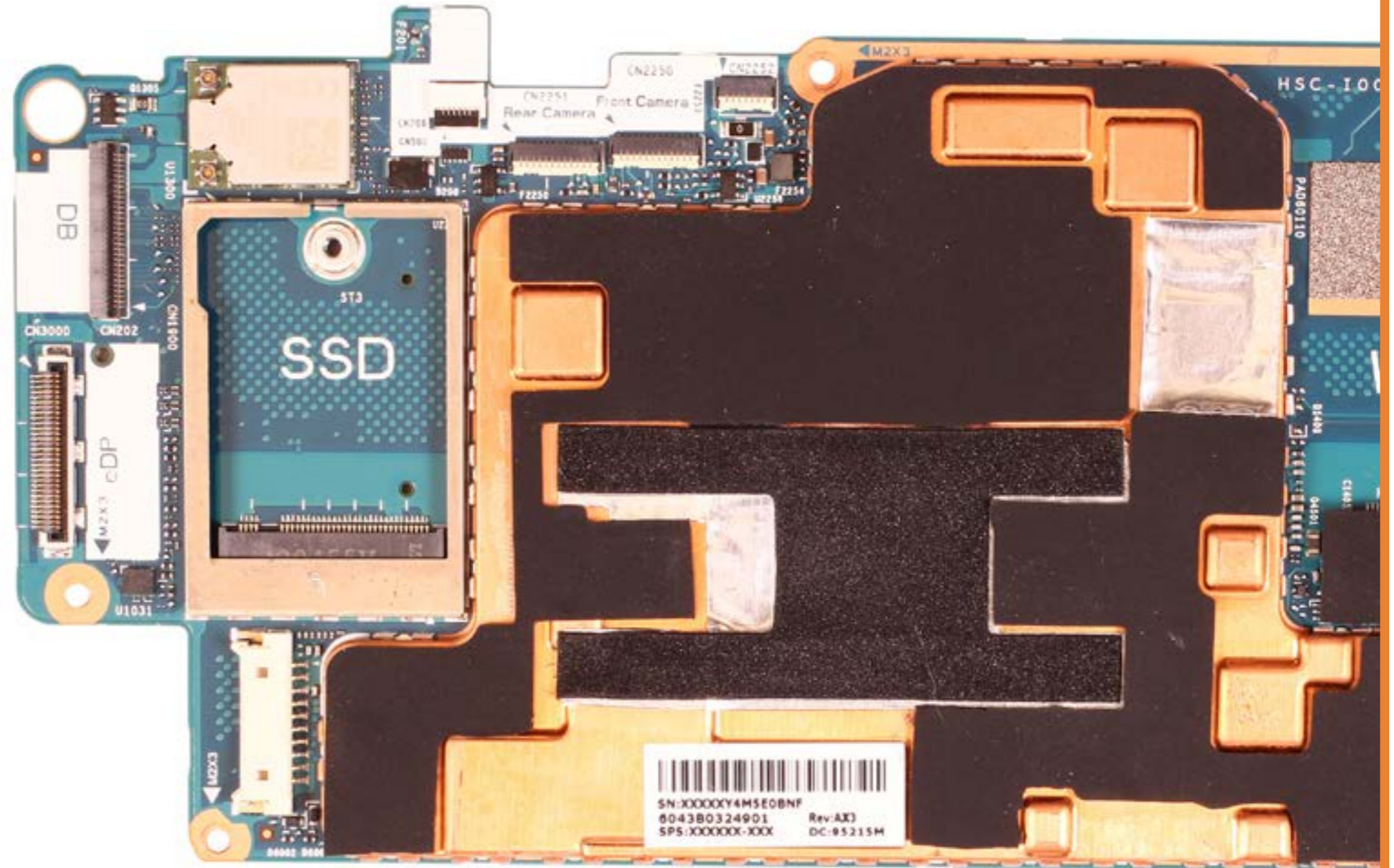
1x view



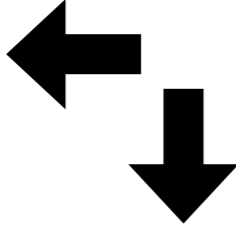
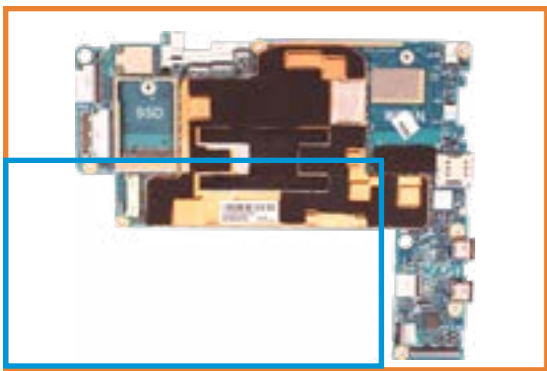
2 X View



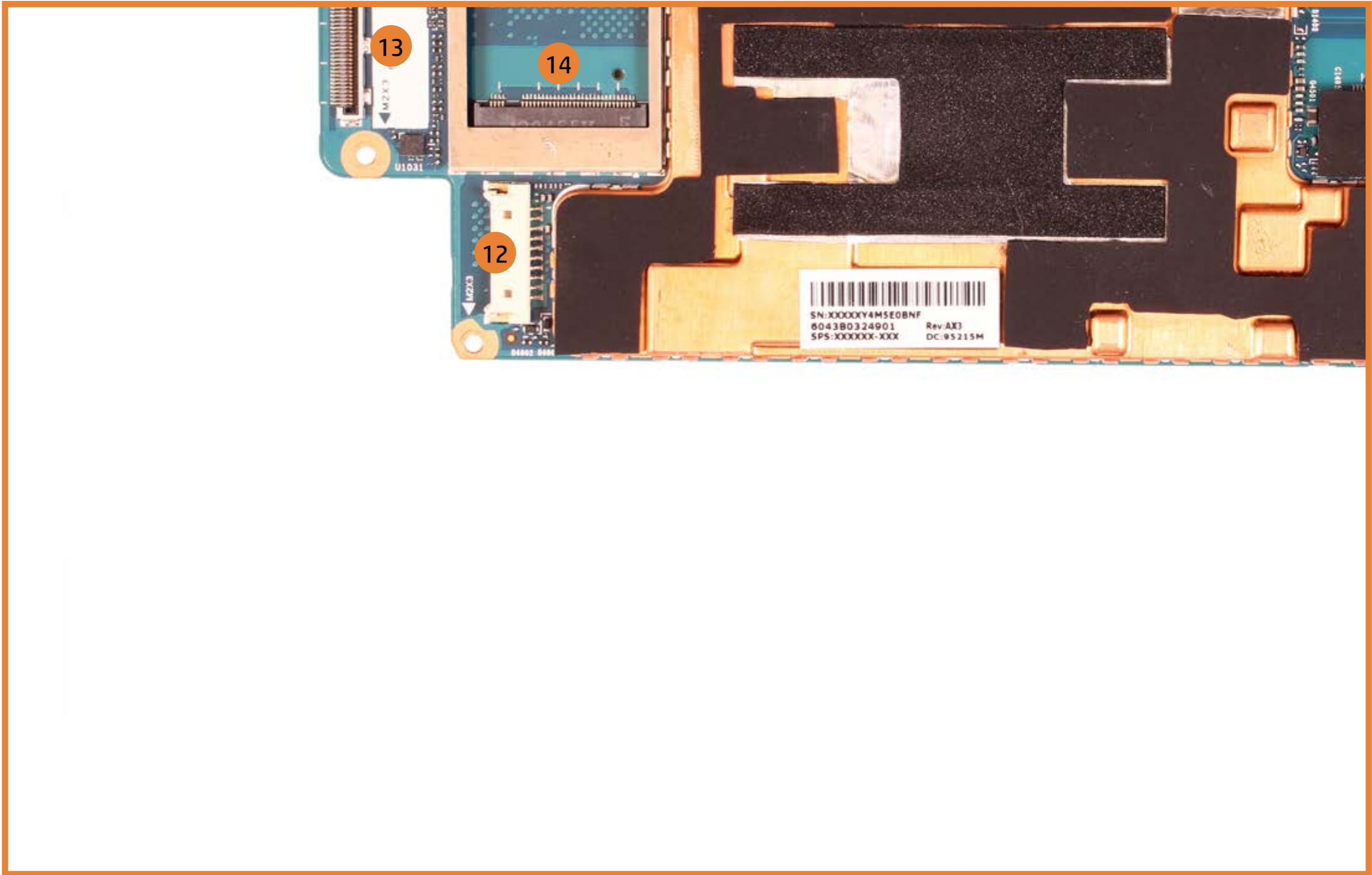
1. Hub Board connector
2. Rear Camera connector
3. Front Camera connector
4. Camera LED connector
5. Power Button connector
6. Volume Button connector
7. WWAN connector
8. Memory Card Reader
9. USB 3.1 Type-C Ports (x2)
10. Microphone + Touch connector
11. NFC Reader connector
12. Battery connector
13. eDP connector
14. M.2 Solid State Drive socket



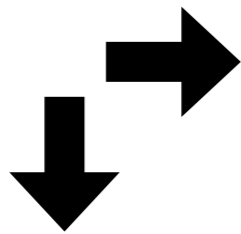
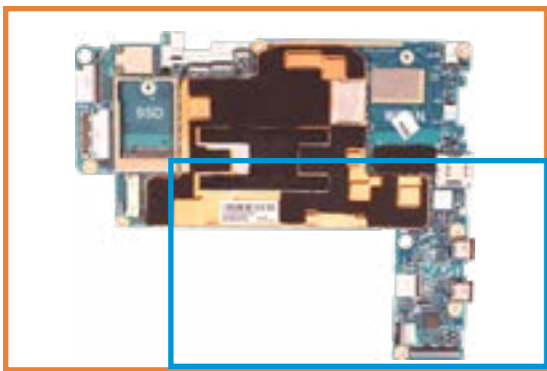
2 X View



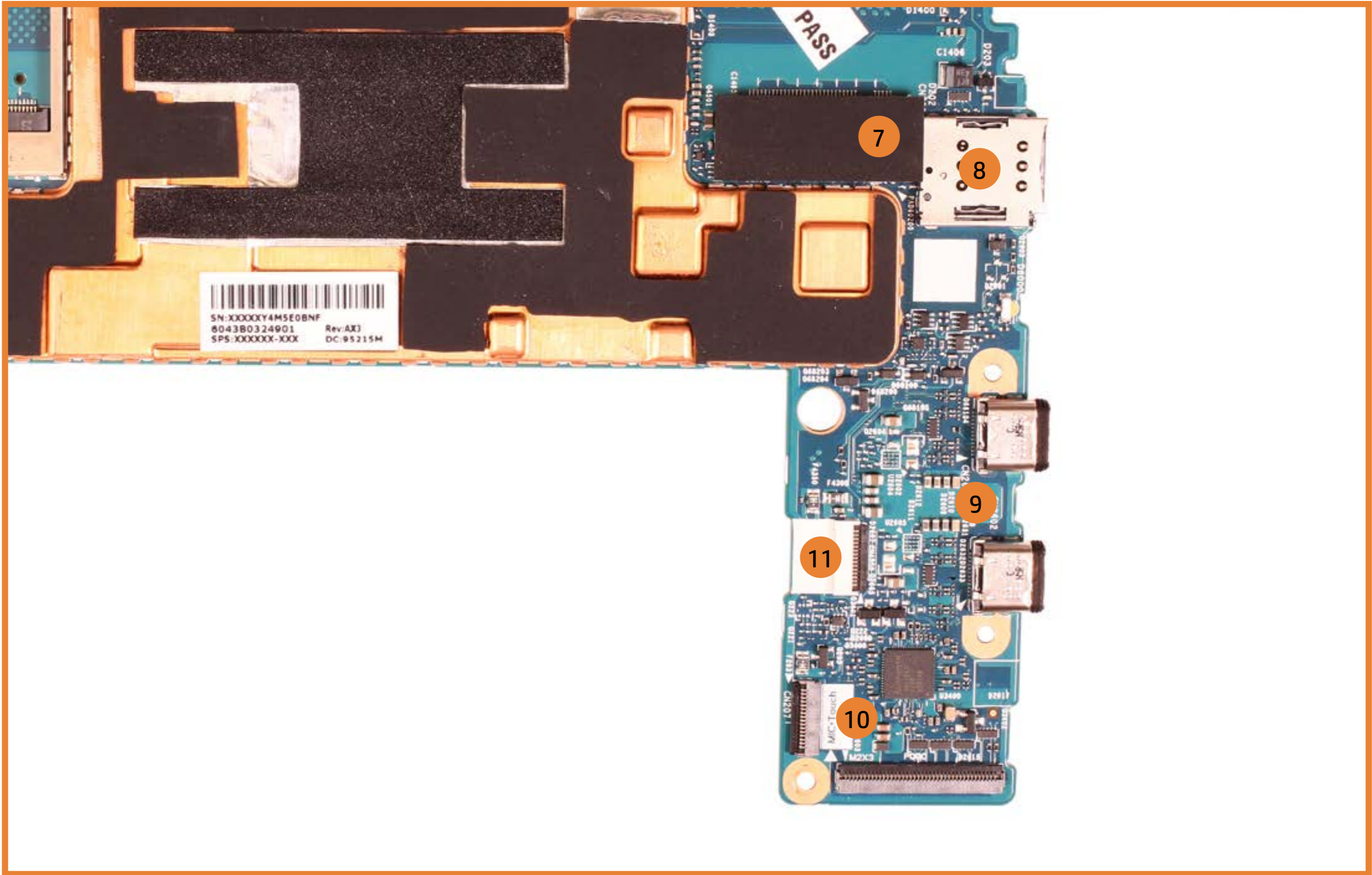
- 1. Hub Board connector
- 2. Rear Camera connector
- 3. Front Camera connector
- 4. Camera LED connector
- 5. Power Button connector
- 6. Volume Button connector
- 7. WWAN connector
- 8. Memory Card Reader
- 9. USB 3.1 Type-C Ports (x2)
- 10. Microphone + Touch connector
- 11. NFC Reader connector
- 12. Battery connector
- 13. eDP connector
- 14. M.2 Solid State Drive socket



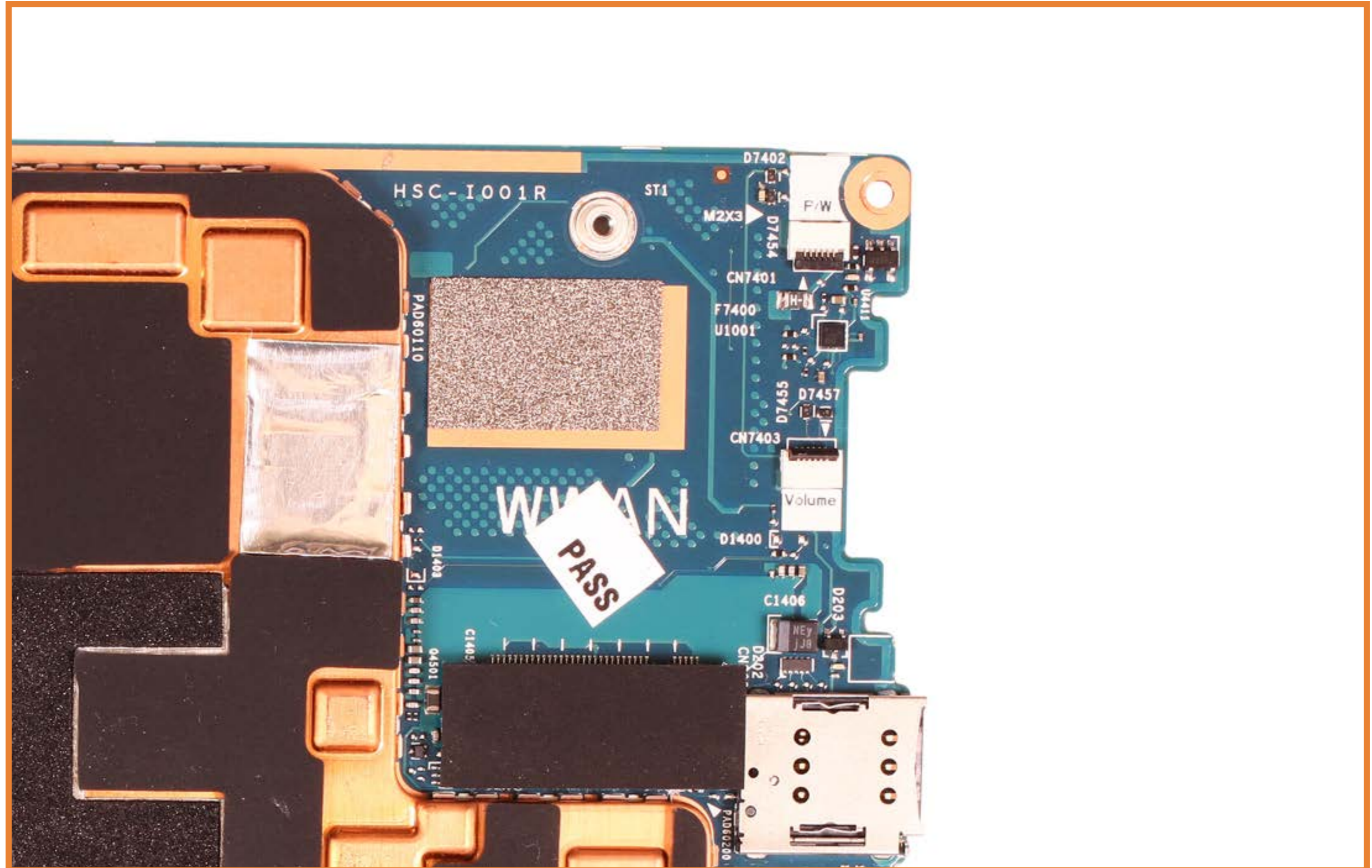
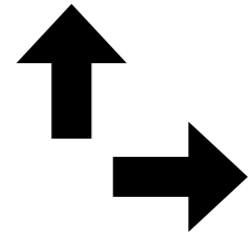
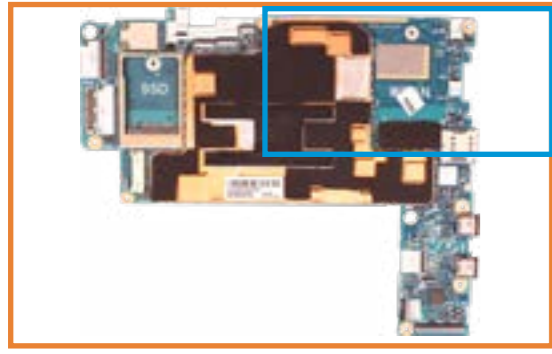
2 X View



- 1. Hub Board connector
- 2. Rear Camera connector
- 3. Front Camera connector
- 4. Camera LED connector
- 5. Power Button connector
- 6. Volume Button connector
- 7. WWAN connector
- 8. Memory Card Reader
- 9. USB 3.1 Type-C Ports (x2)
- 10. Microphone + Touch connector
- 11. NFC Reader connector
- 12. Battery connector
- 13. eDP connector
- 14. M.2 Solid State Drive socket

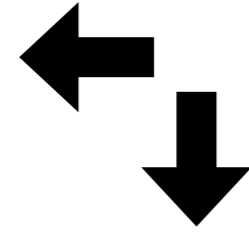
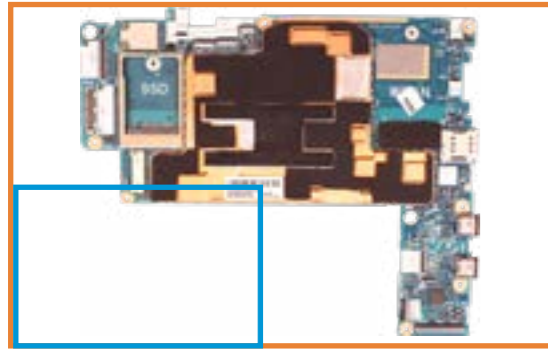


3 X View

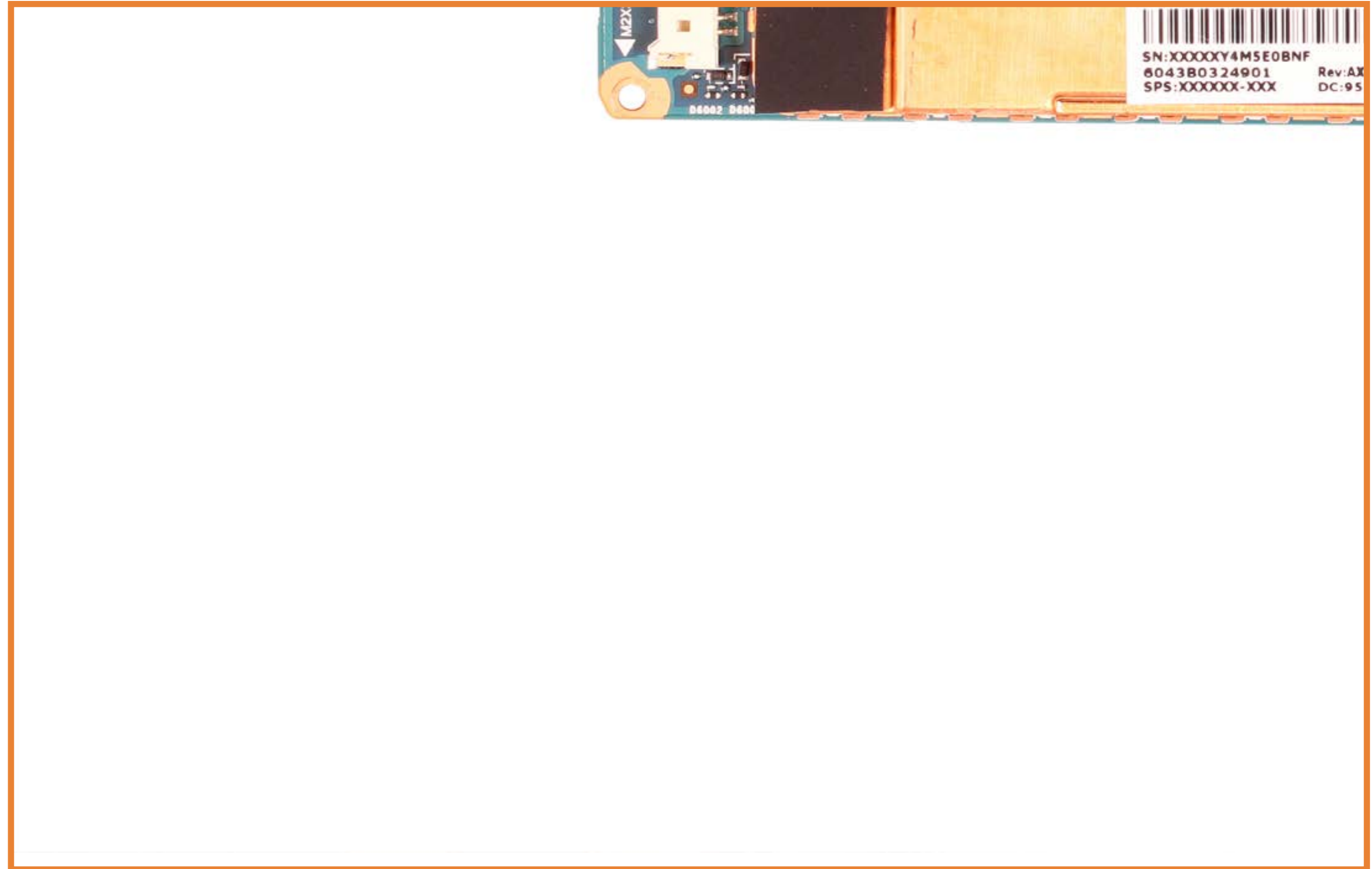


1. Hub Board connector
2. Rear Camera connector
3. Front Camera connector
4. Camera LED connector
5. Power Button connector
6. Volume Button connector
7. WWAN connector
8. Memory Card Reader
9. USB 3.1 Type-C Ports (x2)
10. Microphone + Touch connector
11. NFC Reader connector
12. Battery connector
13. eDP connector
14. M.2 Solid State Drive socket

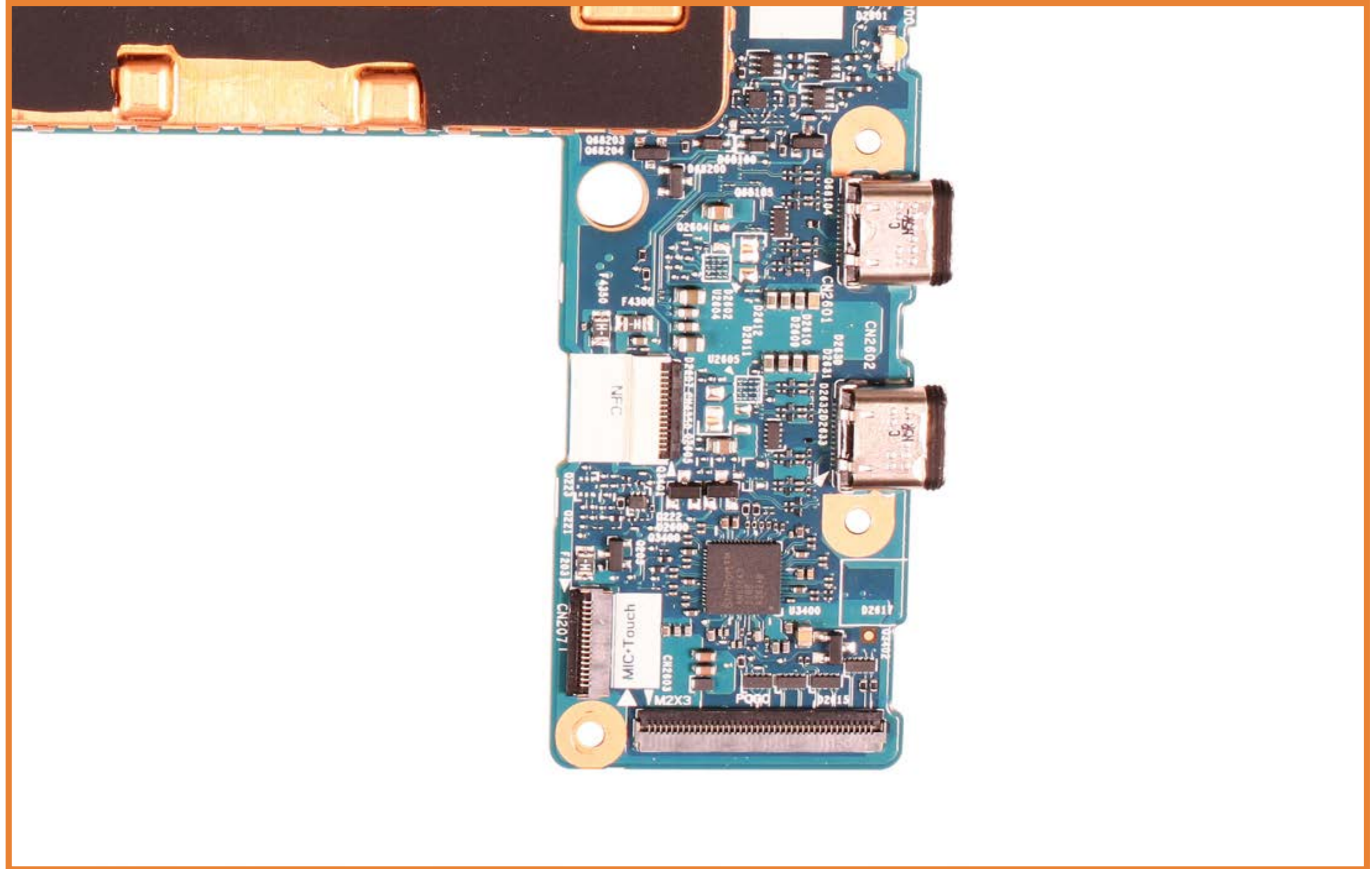
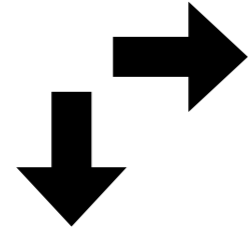
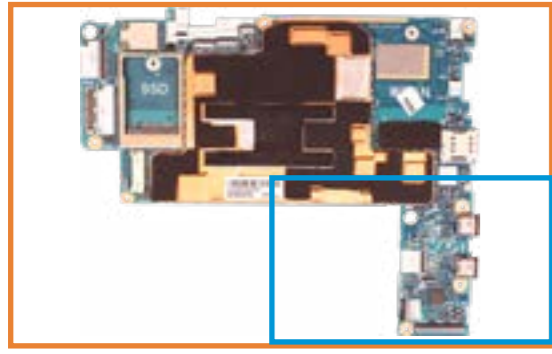
3 X View



1. Hub Board connector
2. Rear Camera connector
3. Front Camera connector
4. Camera LED connector
5. Power Button connector
6. Volume Button connector
7. WWAN connector
8. Memory Card Reader
9. USB 3.1 Type-C Ports (x2)
10. Microphone + Touch connector
11. NFC Reader connector
12. Battery connector
13. eDP connector
14. M.2 Solid State Drive socket

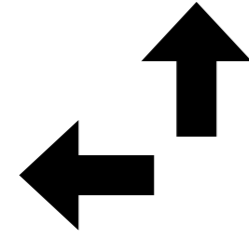
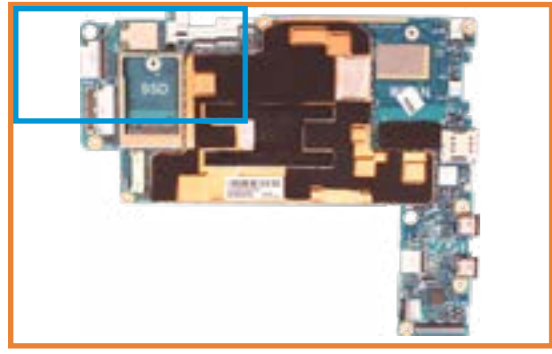


3 X View

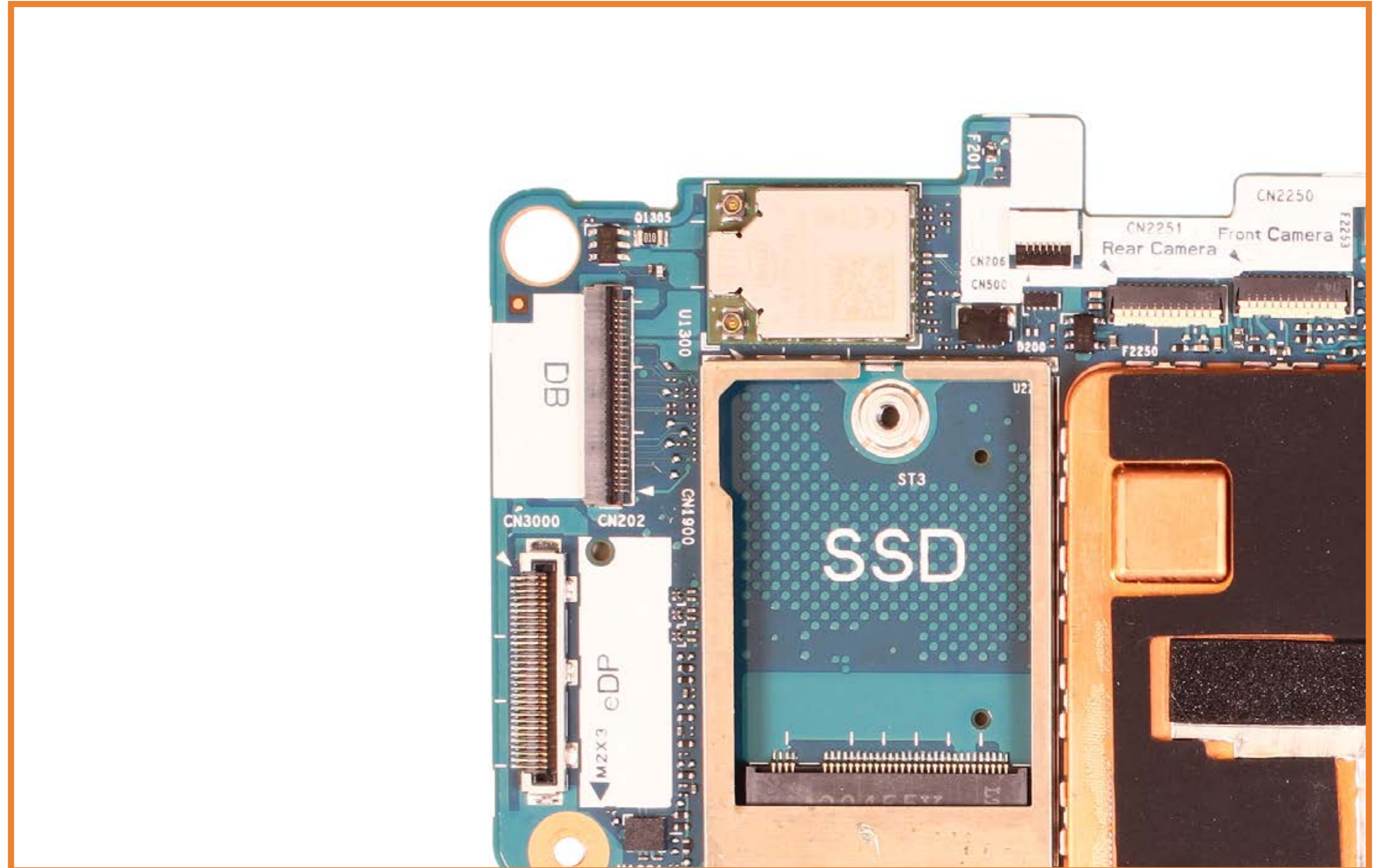


1. Hub Board connector
2. Rear Camera connector
3. Front Camera connector
4. Camera LED connector
5. Power Button connector
6. Volume Button connector
7. WWAN connector
8. Memory Card Reader
9. USB 3.1 Type-C Ports (x2)
10. Microphone + Touch connector
11. NFC Reader connector
12. Battery connector
13. eDP connector
14. M.2 Solid State Drive socket

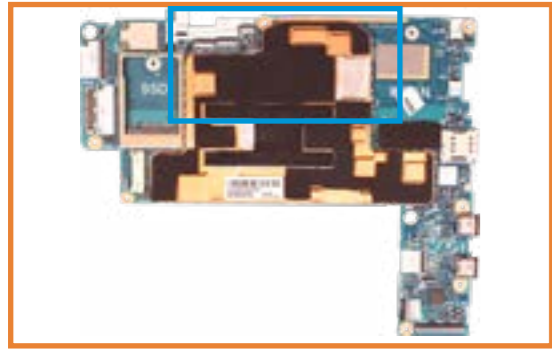
4 X View



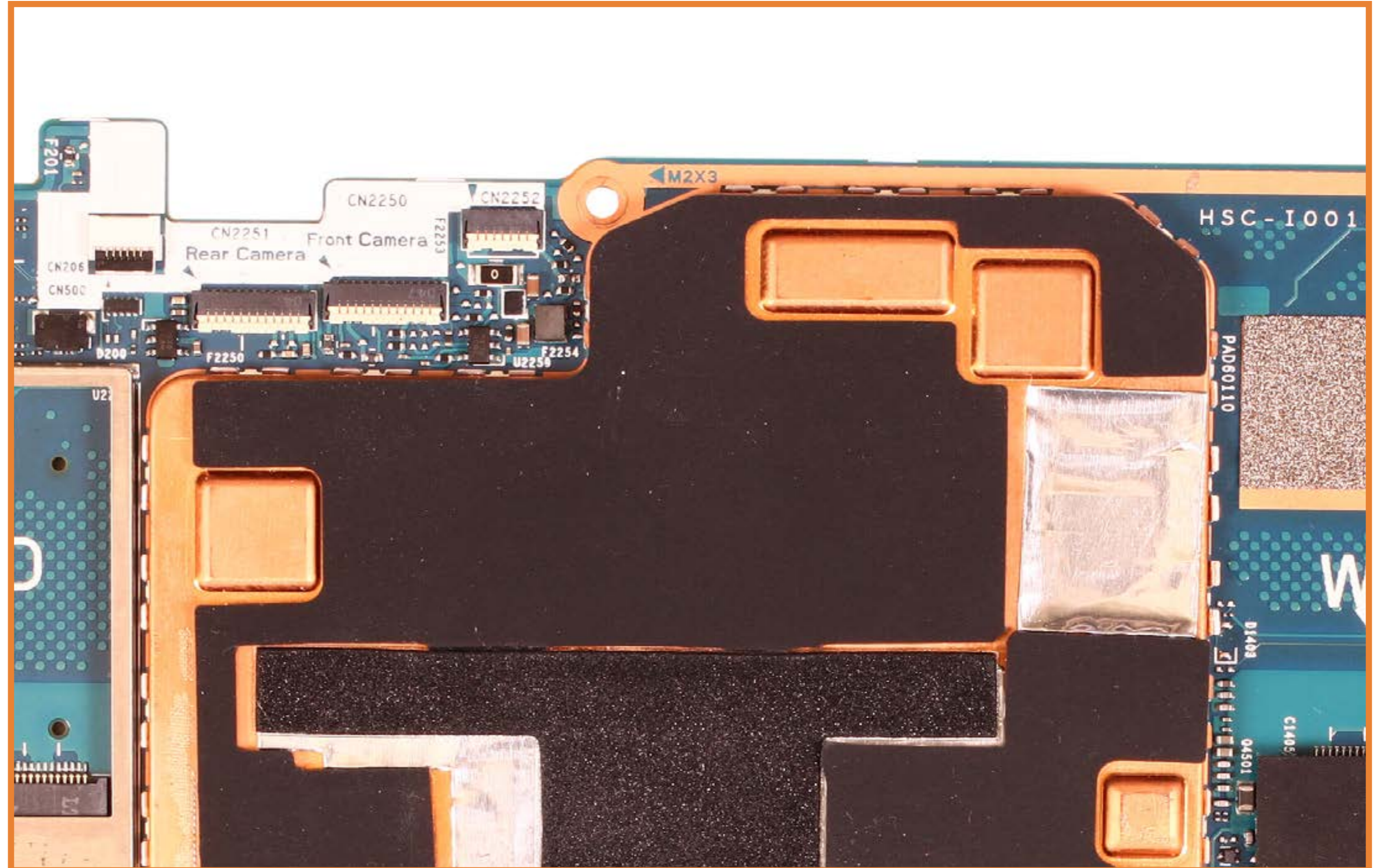
1. Hub Board connector
2. Rear Camera connector
3. Front Camera connector
4. Camera LED connector
5. Power Button connector
6. Volume Button connector
7. WWAN connector
8. Memory Card Reader
9. USB 3.1 Type-C Ports (x2)
10. Microphone + Touch connector
11. NFC Reader connector
12. Battery connector
13. eDP connector
14. M.2 Solid State Drive socket



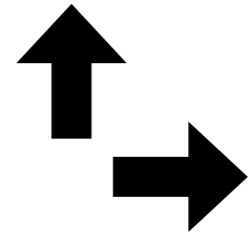
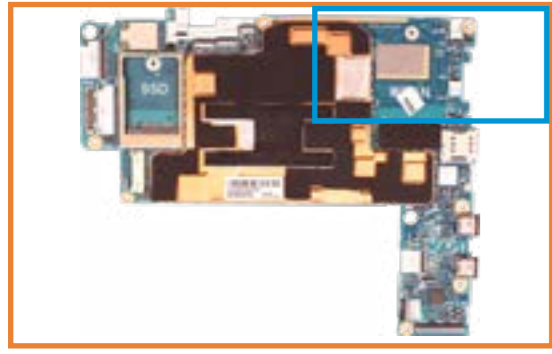
4 X View



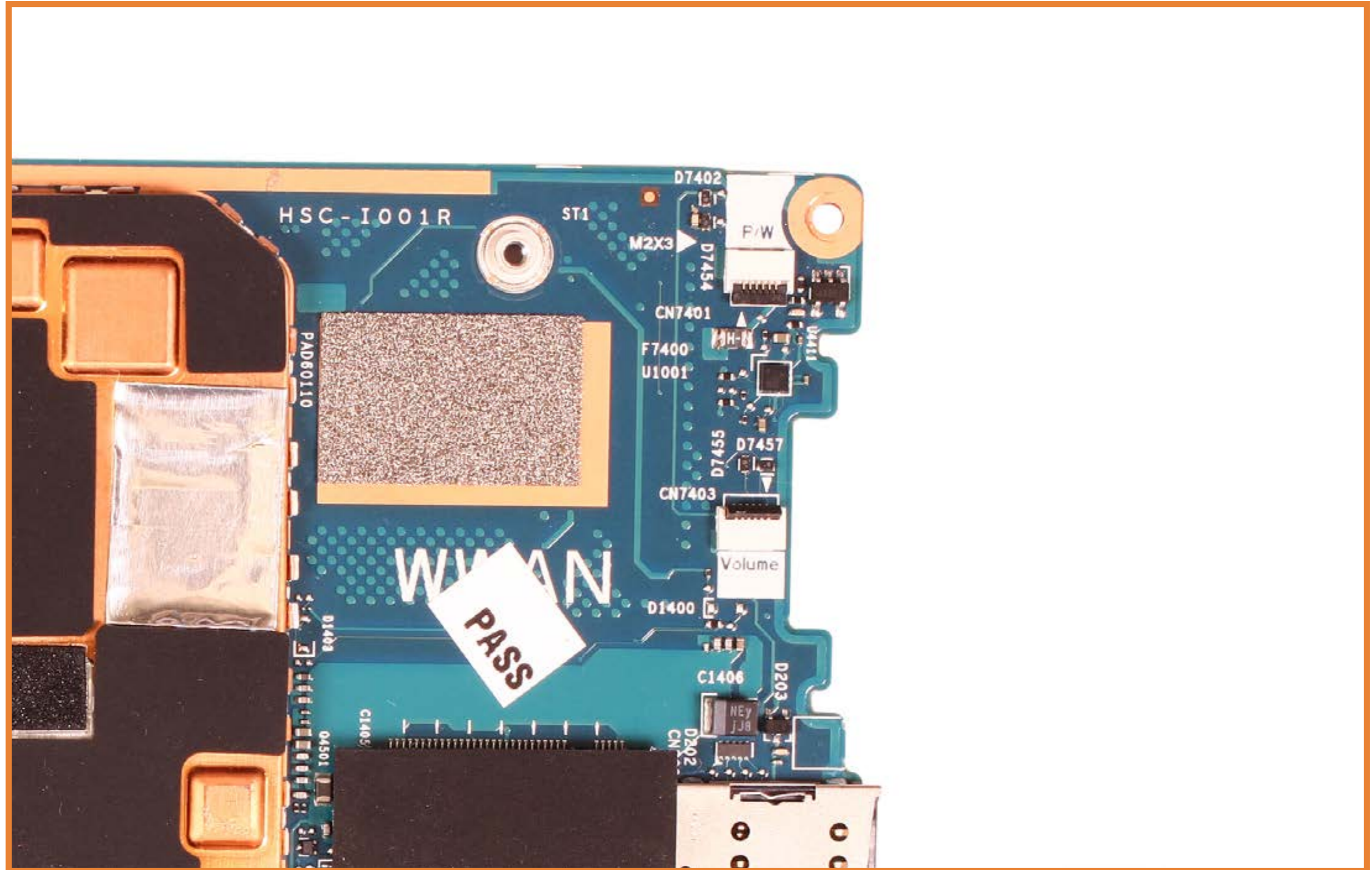
1. Hub Board connector
2. Rear Camera connector
3. Front Camera connector
4. Camera LED connector
5. Power Button connector
6. Volume Button connector
7. WWAN connector
8. Memory Card Reader
9. USB 3.1 Type-C Ports (x2)
10. Microphone + Touch connector
11. NFC Reader connector
12. Battery connector
13. eDP connector
14. M.2 Solid State Drive socket



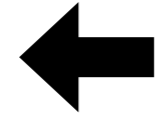
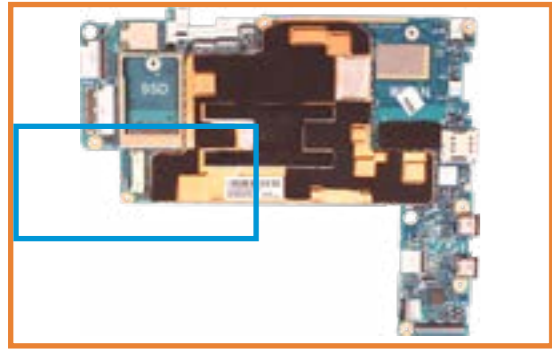
4 X View



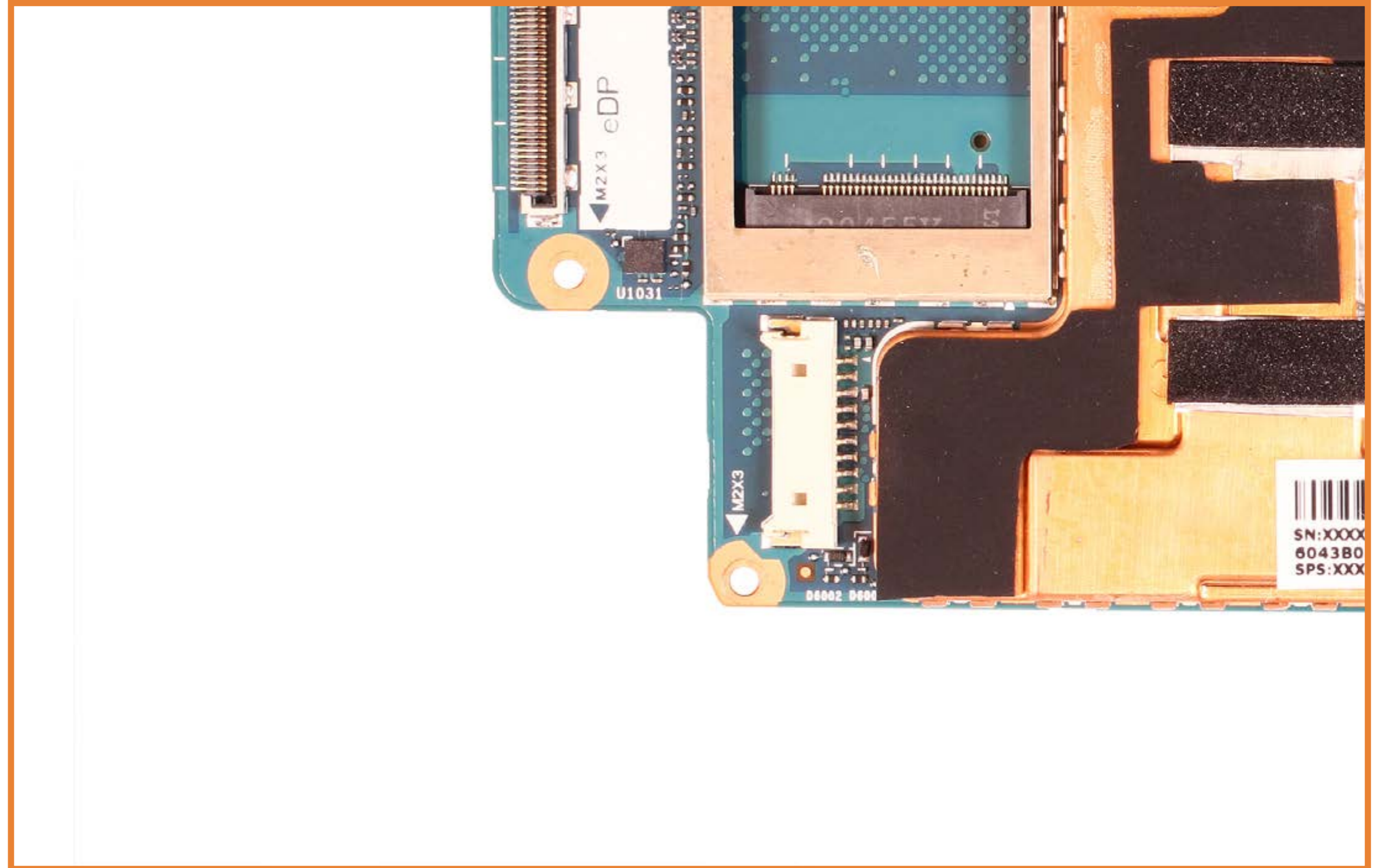
1. Hub Board connector
2. Rear Camera connector
3. Front Camera connector
4. Camera LED connector
5. Power Button connector
6. Volume Button connector
7. WWAN connector
8. Memory Card Reader
9. USB 3.1 Type-C Ports (x2)
10. Microphone + Touch connector
11. NFC Reader connector
12. Battery connector
13. eDP connector
14. M.2 Solid State Drive socket



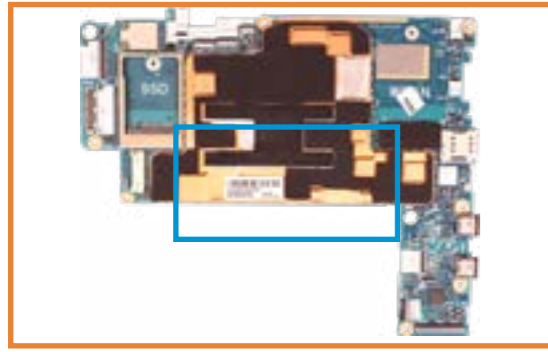
4 X View



1. Hub Board connector
2. Rear Camera connector
3. Front Camera connector
4. Camera LED connector
5. Power Button connector
6. Volume Button connector
7. WWAN connector
8. Memory Card Reader
9. USB 3.1 Type-C Ports (x2)
10. Microphone + Touch connector
11. NFC Reader connector
12. Battery connector
13. eDP connector
14. M.2 Solid State Drive socket



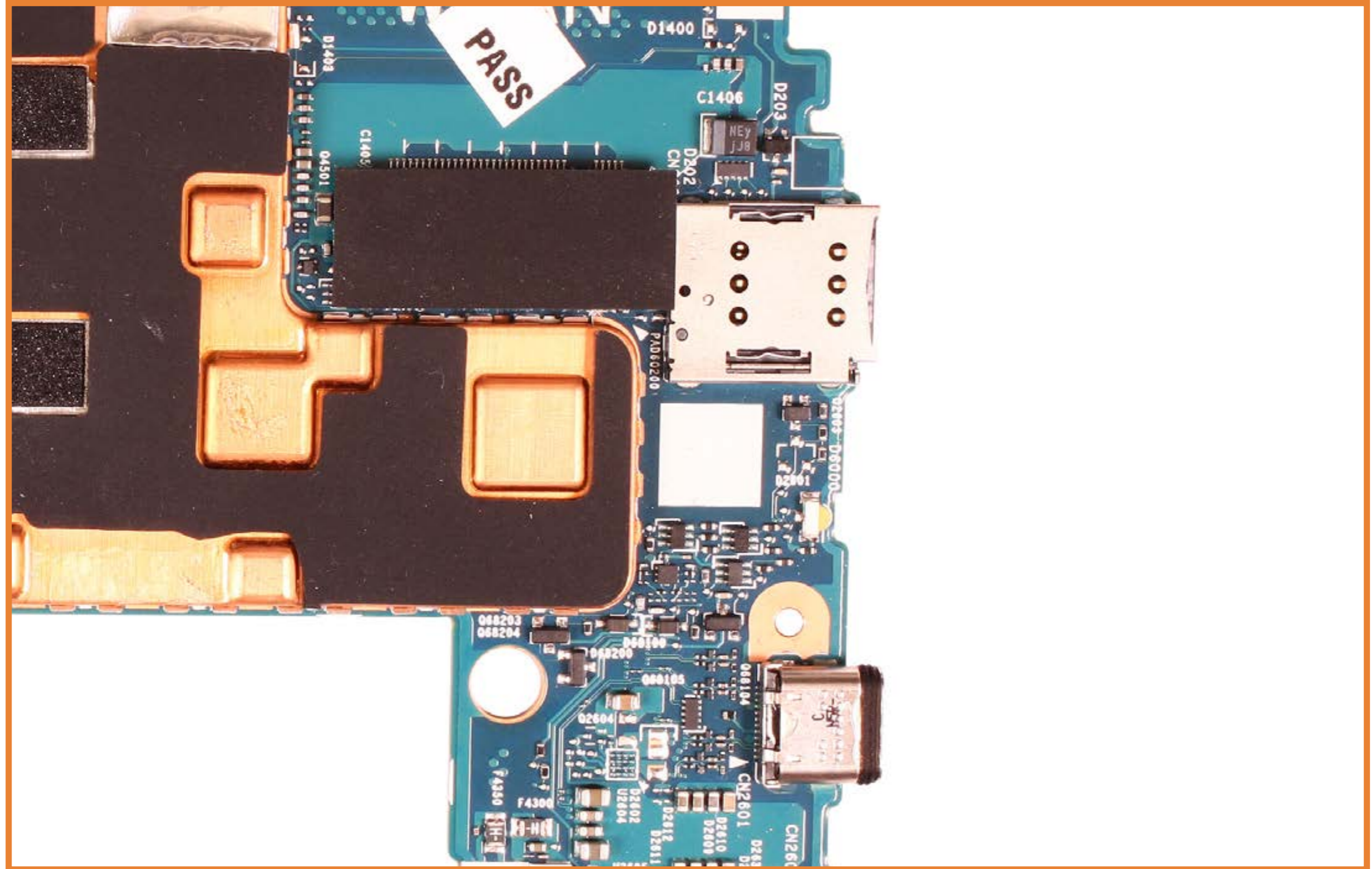
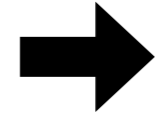
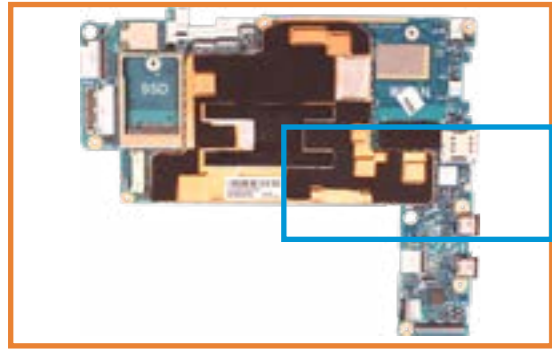
4 X View



1. Hub Board connector
2. Rear Camera connector
3. Front Camera connector
4. Camera LED connector
5. Power Button connector
6. Volume Button connector
7. WWAN connector
8. Memory Card Reader
9. USB 3.1 Type-C Ports (x2)
10. Microphone + Touch connector
11. NFC Reader connector
12. Battery connector
13. eDP connector
14. M.2 Solid State Drive socket

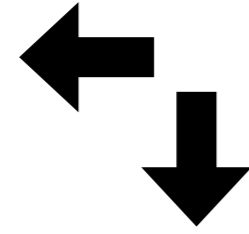
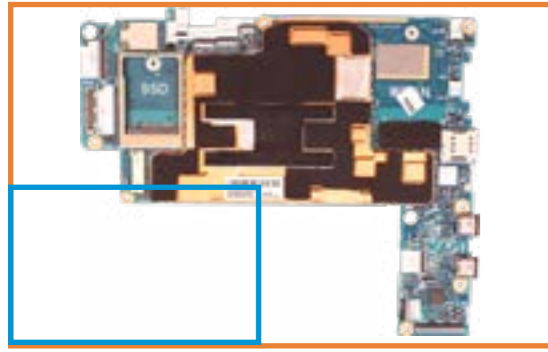


4 X View



1. Hub Board connector
2. Rear Camera connector
3. Front Camera connector
4. Camera LED connector
5. Power Button connector
6. Volume Button connector
7. WWAN connector
8. Memory Card Reader
9. USB 3.1 Type-C Ports (x2)
10. Microphone + Touch connector
11. NFC Reader connector
12. Battery connector
13. eDP connector
14. M.2 Solid State Drive socket

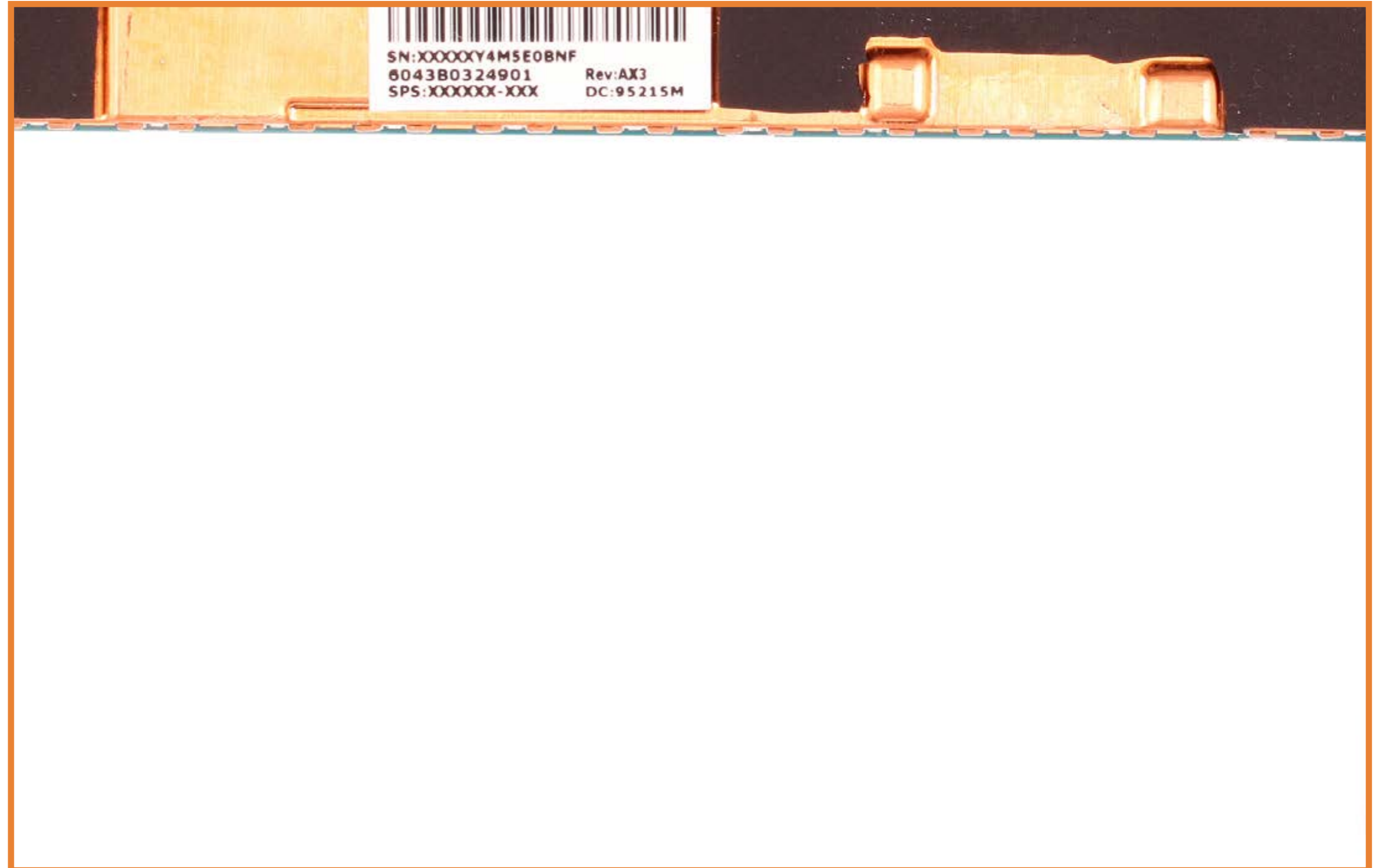
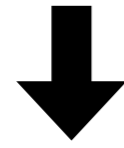
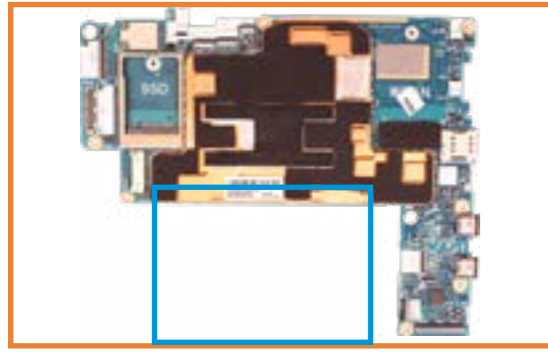
4 X View



1. Hub Board connector
2. Rear Camera connector
3. Front Camera connector
4. Camera LED connector
5. Power Button connector
6. Volume Button connector
7. WWAN connector
8. Memory Card Reader
9. USB 3.1 Type-C Ports (x2)
10. Microphone + Touch connector
11. NFC Reader connector
12. Battery connector
13. eDP connector
14. M.2 Solid State Drive socket

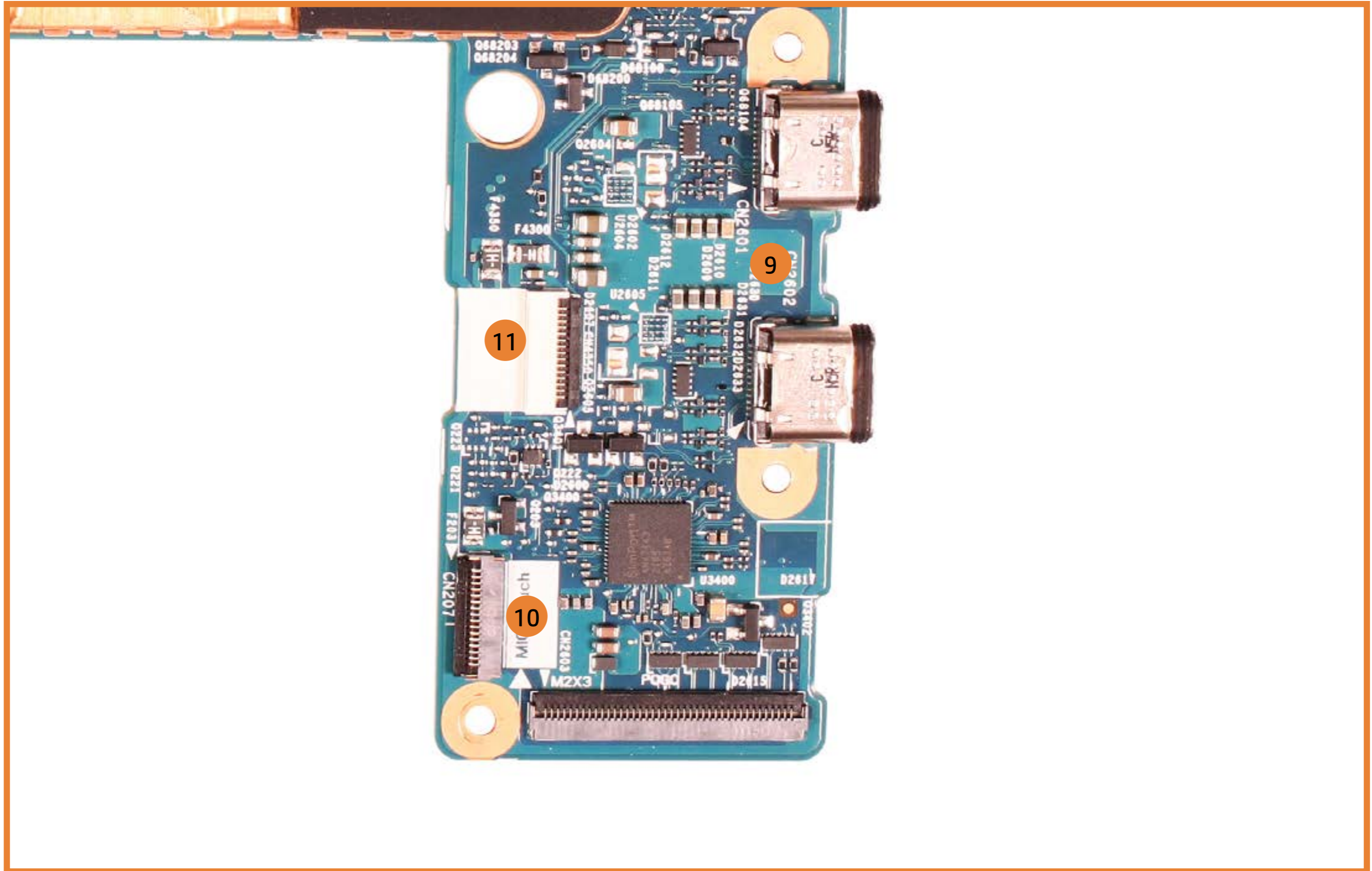
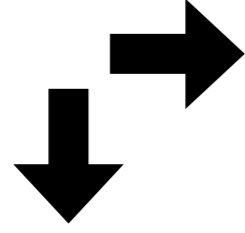
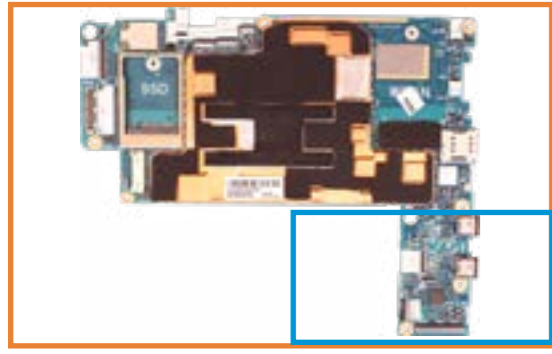


4 X View



1. Hub Board connector
2. Rear Camera connector
3. Front Camera connector
4. Camera LED connector
5. Power Button connector
6. Volume Button connector
7. WWAN connector
8. Memory Card Reader
9. USB 3.1 Type-C Ports (x2)
10. Microphone + Touch connector
11. NFC Reader connector
12. Battery connector
13. eDP connector
14. M.2 Solid State Drive socket

4 X View



1. Hub Board connector
2. Rear Camera connector
3. Front Camera connector
4. Camera LED connector
5. Power Button connector
6. Volume Button connector
7. WWAN connector
8. Memory Card Reader
9. USB 3.1 Type-C Ports (x2)
10. Microphone + Touch connector
11. NFC Reader connector
12. Battery connector
13. eDP connector
14. M.2 Solid State Drive socket