



Samsung SMART Signage Razor Narrow Bezel Video Wall VHR-R Series

Seamless video walls with razor-thin bezels

Samsung's VHR-R Series video wall display has a razor-thin bezel measuring just 0.44 mm, a 0.88 mm bezel-to-bezel depth. A wide viewing angle provides an immersive viewing experience without distraction. Picture enhancement technology delivers vibrant images while a slim and sleek design blends seamlessly into any business environment. All supported by 700 nit brightness, non-glare panels and 24/7 reliability for a solution that can meet your business' demands.

Highlights

- Razor-thin 0.44mm even bezel design delivers one immersive, seamless image.
- Wide viewing angles enable clear image presentation for more viewers in large spaces.
- 700 nit brightness and non-glare panel provide high visibility 24/7.
- Picture enhancement technology delivers optimized visuals.
- Slim design creates neat environment and saves space.
- Color Expert Pro Mobile provides quick and easy video wall calibration using a mobile device.
- Multi-step factory calibration delivers content with near-perfect uniformity.
- Meets industry standards, EMC class B compliant and ISTA-6 certified.
- Daisy-chain enables easy UHD content presentation without external equipment.

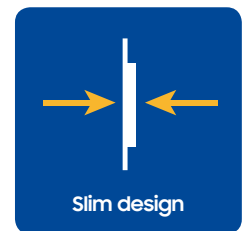
SAMSUNG

Industry trends

Across industries, businesses are always seeking out the best tools and platforms to ensure their messages are eye-catching and provide a positive brand impression. In large spaces, businesses often look to video walls for a display solution that captures attention in a memorable way. As display technology has improved, customers expect to see video walls with uninterrupted images and narrow bezels to provide a differentiated, lifelike visual presentation. Video walls are also commonly used in professional settings such as control rooms and financial institutions which require displays that present large quantities of easily understandable data without any interruption or distraction in the image. At the same time, businesses are under intense pressure to find efficient, reliable solutions that help save operational costs and eliminate potential technical issues.

Why Samsung's VHR-R Series?

Incorporating Samsung's industry-leading picture technology, the VHR-R series video wall displays deliver a superior, immersive viewing experience. Fine-tuned with a multi-step factory calibration to ensure pixel-level uniform color presentation and enhanced with Samsung's innovative Color Expert Pro Mobile which provides users with a quick and easy tool to ensure the display is delivering perfect images for the conditions of the room without the need for any costly equipment. Industry standard certified for reliable operation and designed and optimized for any business need, the VHR-R series delivers stunning image quality in a slim, spacing-saving design, ideal for a wide range of business uses.

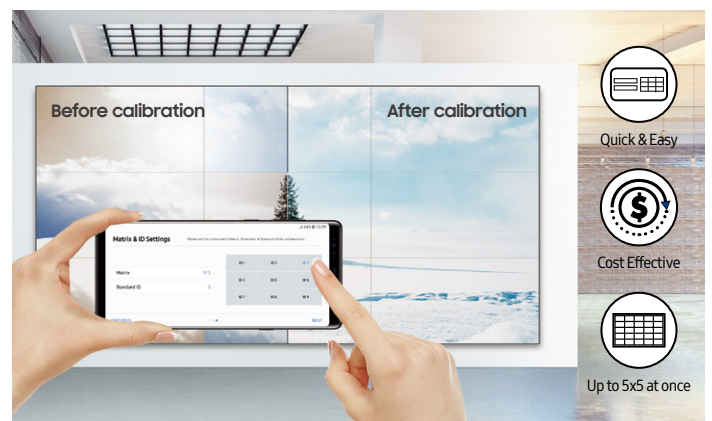


Precise and convenient calibration



Comprehensive calibration

Samsung's multi-step factory calibration process tunes video walls to uniform brightness and color throughout multiple displays. In addition to rigorous factory calibration, users can also manage brightness and color uniformity with Samsung's Color Expert Pro, a powerful free software program.



Convenient mobile calibration

Samsung's Color Expert Pro Mobile solution provides a quick and easy video wall calibration through a mobile camera. With the solution's intuitive UI, even non-expert users can adjust up to 5x5 video wall's white balance simultaneously without the need for additional equipment.

* Samsung Color Expert Pro Mobile is only available on certain smartphone models.

Immersive and impactful viewing experience



Nearly invisible 0.44 mm bezel

A nearly invisible 0.44 mm even bezel — a 0.88 mm bezel-to-bezel depth — enables content to be delivered as one seamless image. Additionally, the display helps to eliminate any potential image distortion and provides a more immersive viewing experience.

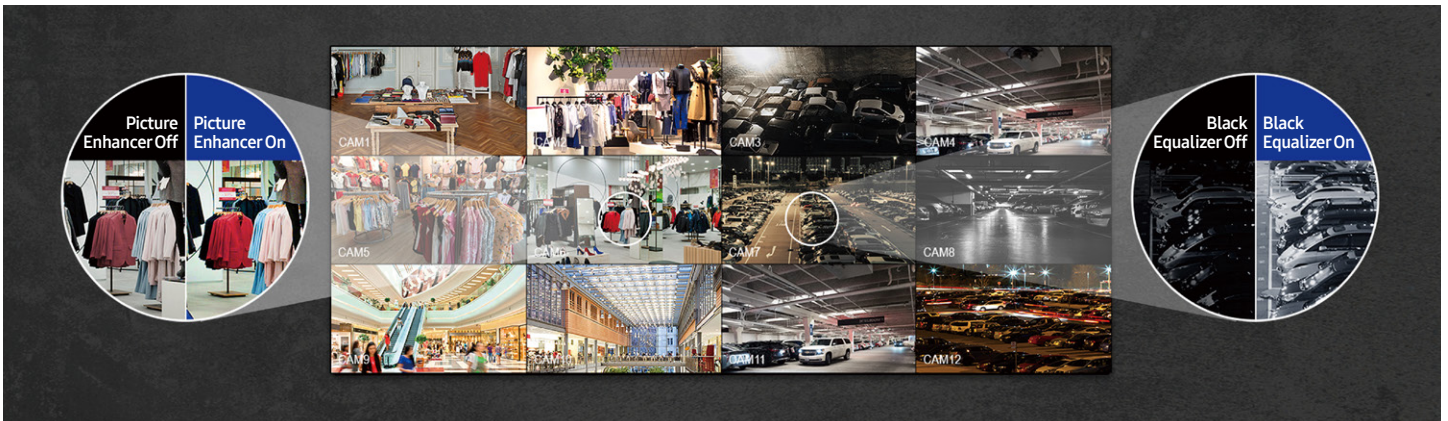
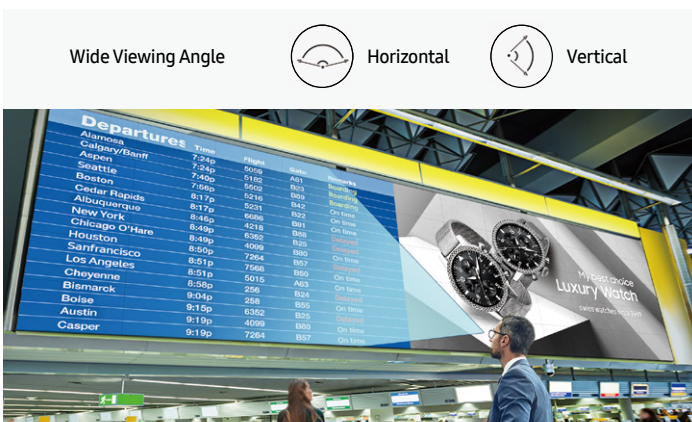


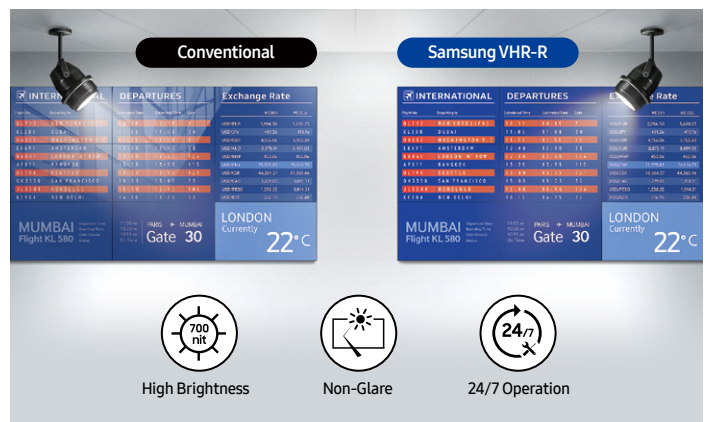
Image enhancement technology

Samsung's powerful picture enhancement technology ensures all content is vibrant and clear. With Picture Enhancer mode, color saturation and contrast are improved by adjusting the gamma curve. Using Black Equalizer mode, dark images are lightened, so details are easier to see.



View content from any angle

The display's wide viewing angles mean content is easily visible even if viewers aren't standing directly in front of the display. Audiences can get clear and accurate information regardless of video wall layout or location.



Vibrant images 24/7

Experience brilliant image presentation with an impressive 700 nit brightness allowing businesses to deliver clear information 24/7. The display's non-glare panels provide better visibility regardless of ambient light, ensuring critical information is always visible.

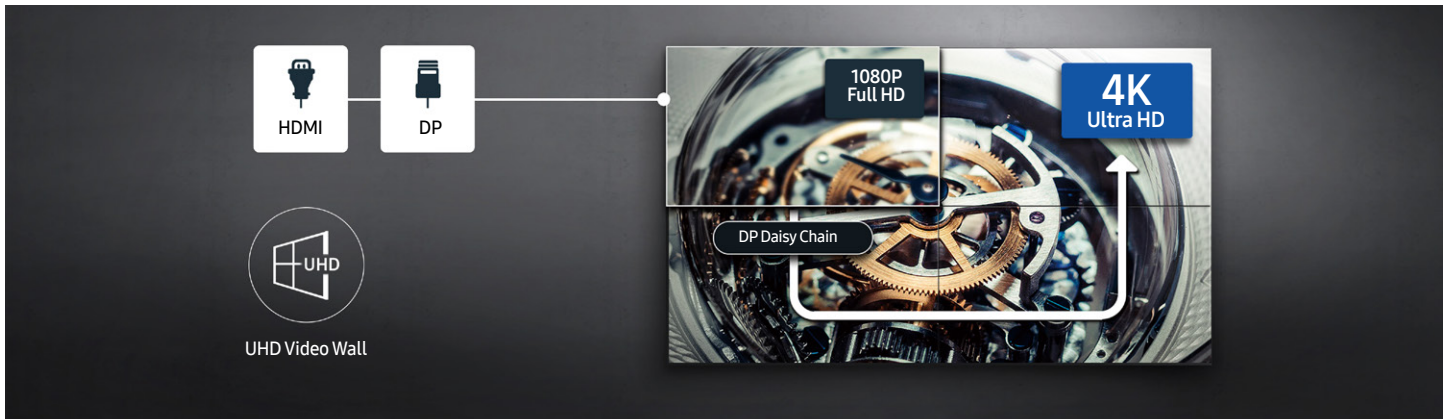
Subtle layout for any location



Modern, slim design

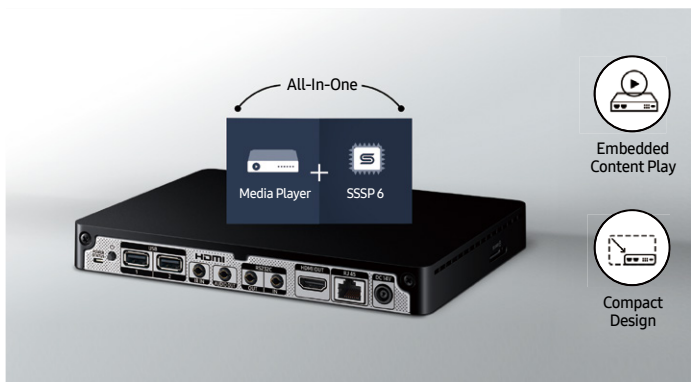
VHR-R displays feature an elevated design aesthetic with an ultra-slim depth of less than 70 mm. This allows the display to save space and create a clean, modern look for retail or other public spaces.

Efficient and reliable operation



Advanced UHD presentation

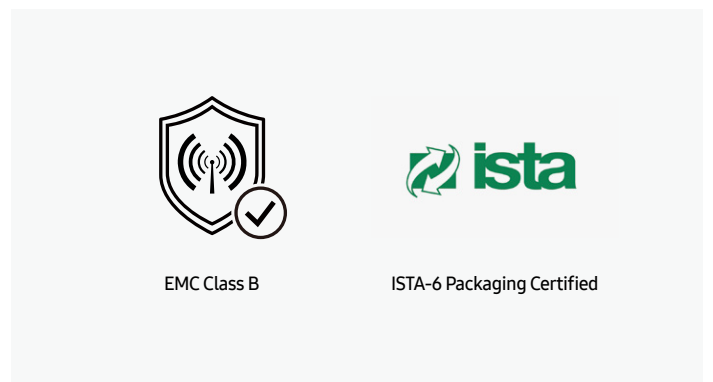
Samsung video walls provide an impressive UHD viewing experience with minimal effort. With daisy chain design utilizing DisplayPort 1.2 and HDMI ports, the VHR-R display can project UHD content across multiple screens up — to 5 x 5 — without requiring an external graphic card or UHD splitters.



Intuitive all-in-one operations

The UHD Signage Player Box combines information processing and content management tools into a single platform, for added operational simplicity. Weighing just 0.6 kg, even with embedded Magi-INFO S Player 6 and SSSP 6, the compact design of the box makes it an ideal solution.

* The Signage Player Box is sold separately.



Industry standard certified

The VHR-R series is EMC class B compliant, ensuring a safe viewing environment by meeting strict standards of electromagnetic wave emission. The display packaging also passed a rigorous 4-step test in an ISTA-certified laboratory designed to minimize possible damage during delivery.

* EMC: Electromagnetic compatibility
ISTA: International Safe Transit Association

Specifications

Model			VH55R-R
Panel	Diagonal Size	Class	55"
		Measured	54.6" / 138.7cm
	Type		IPS
	Resolution		1920*1080
	Pixel Pitch (mm)		0.63mm(H) * 0.63mm(V)
	Active Display Area		1209.6 * 680.4mm
	Brightness(Typ.)		Max 700 nit
	Contrast Ratio (Typ.)		1100:1
	Viewing Angle(H/V)		178/178
	Response Time (G to G)		8ms
	Display Colors		8 bit -16.7M
	Color Gamut		72%
	Operation Hour		24/7
	Haze		28%
Display	Dynamic C/R		30,000:1
	H-Scanning Frequency		57.3kHz ~ 70kHz
	V-Scanning Frequency		48Hz ~ 75Hz
	Maximum Pixel Frequency		78MHz
Sound	Speaker Type		N/A
Connectivity	INPUT	RGB	DVI-D, Display Port 1.2
		VIDEO	HDMI 2.0 (2)
		HDCP	HDCP 2.2
		AUDIO	Stereo mini Jack
		USB	Only F/W upgrade
	OUTPUT	RGB	DP1.2(Loop-out)
		VIDEO	N/A
		AUDIO	Stereo mini Jack
		Power Out	N/A
	EXTERNAL CONTROL		RS232C(in/out), RJ45
EXTERNAL SENSOR		Detachable type(IR)	
Tuner		N/A	
Power	Type		Internal
	Power Supply		AC 100 - 240 V~ (+/- 10%), 50/60 Hz
	Power Consumption	Max[W/h]	270
		Typical[W/h]	153
		BTU(Max)	921
		Sleep mode	less than 0.5W
Off mode	less than 0.5W		
Mechanical Spec	Dimension(mm)	Set	1211.0 x 681.7 x 69.9
		Package	1414.0 x 844.0 x 257.0
	Weight (kg)	Set	16.8kg
		Package	25.1kg
	VESA Mount		600 * 400 (mm)
	Protection Glass		N/A
Stand Type		N/A	
Bezel Width (Top/Side/Bot) (mm)		0.44mm (Even)	
Operation	Operating Temperature		0°C~ 40°C
	Humidity		10~80%
Feature	Key		Razor Narrow Bezel
	Special		ACM Support(Advanced Color Management), Auto Source Switching & Recovery, Haze 28%, Temperature Sensor, RS232C/RJ45 MDC, Plug and Play (DDC2B), Video Wall(15x15(OSD)), Video Wall Daisy Chain(10x10), Pivot Display, Image Rotation, Button Lock, DP1.2 Digital Daisy Chain(Supporting UHD Resolution, HDCP support), Smart F/W update, Clock Battery(168hrs Clock Keeping), IP5X tested, EMC Class B
Certification	Safety		UL (USA) : UL 60950-1, CSA (Canada) : CSA C22.2 No. 60950-1, TUV (Germany) : EN60950-1, NEMKO (Norway) : EN60950-1, KC (Korea) : K60950-1, CCC (China) : GB4943.1-2011, PSB (Singapore) : IEC60950-1, GOST (Russia) : IEC60950-1, EN55022, SIQ (Slovenia) : IEC60950-1, EN55022, PCBC (Poland) : IEC60590-1, EN55022, NOM (Mexico) : NOM-019-SCFI-1993, IRAM (Argentina) : IEC60950-1, SASO (Saudi Arabia) : IEC60950-1
	EMC		FCC (USA) FCC Part 15, Subpart B class B, CE (Europe) EN55022, EN55024, VCCI (Japan) VCCI CISPR32:2016, KCC (Korea) : KN32, KN35, BSMI (Taiwan) : CNS13438 (CISPR22), C-Tick (Australia) : AS/NZS CISPR32:2015, CCC(China) : GB9254-2008, GB17625.1-2012
	IP Rating		IP5X
	Environment		N/A
Accessories	Included		Quick Setup Guide, Warranty Card, DP cable, stereo to DB9 cable, Power Cord, Remote Controller, Batteries, External IR
	Optional	Stand	N/A
		Mount	WMN-55VD
		Specialty	N/A
Media Player Option Type		Signage player box	

About Samsung Electronics Co., Ltd.

Samsung Electronics Co., Ltd. inspires the world and shapes the future with transformative ideas and technologies. The company is redefining the worlds of TVs, smartphones, wearable devices, tablets, cameras, digital appliances, medical equipment, network systems, and semiconductor and LED solutions. For the latest news, please visit the Samsung Newsroom at news.samsung.com.

SMART Signage

For more information about Samsung SMART Signage VHR-R Series Displays, visit www.samsung.com/business or www.samsung.com/displaysolutions

Copyright © 2019 Samsung Electronics Co. Ltd. All rights reserved. Samsung is a registered trademark of Samsung Electronics Co. Ltd. Specifications and designs are subject to change without notice. Non-metric weights and measurements are approximate. All data were deemed correct at time of creation. Samsung is not liable for errors or omissions. All brand, product, service names and logos are trademarks and/or registered trademarks of their respective owners and are hereby recognized and acknowledged.

Samsung Electronics Co., Ltd.
416, Maetan 3-dong, Yeongtong-gu, Suwon-si, Gyeonggi-do 443-772, Korea

2019-10