



Philips Fast IPS Gaming  
monitor  
Full HD gaming monitor

### Evnia 3000

24 (23.8" / 60.5 cm diag.)  
1920 x 1080 (Full HD)

24M2N3200S

## Broaden your gaming horizon

This Fast IPS monitor allows you to game with ultimate precision and speed at 180Hz. With sharp HDR quality imagery and Full HD resolution guaranteed, this monitor produces an excellent all-around gaming experience.

#### Built for fast action

- 0.5 ms ultra-fast speed for crisp image and smooth gameplay

#### Features designed for gamers needs

- SmartImage game mode optimized for gamers
- Built-in stereo speakers for multimedia
- LowBlue mode and Flicker-free easy-on-the eyes viewing
- EasySelect menu toggle key for quick on-screen menu access
- Smart Crosshair: for better aim and more fun

#### Built for fast action

- 180Hz refresh rates for ultra-smooth, brilliant images
- Low input lag reduces time delay between devices to monitor

#### Immersive visuals

- 16:9 Full HD display for crisp detailed images

# PHILIPS

Full HD gaming monitor  
Evnia 3000 24 (23.8" / 60.5 cm diag.), 1920 x 1080 (Full HD)

24M2N3200S/75

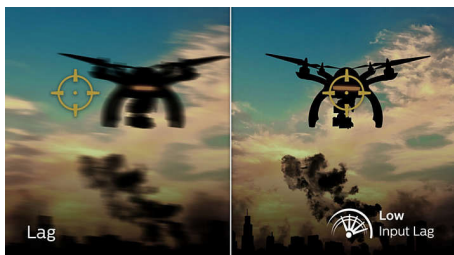
# Highlights

## 180Hz Gaming



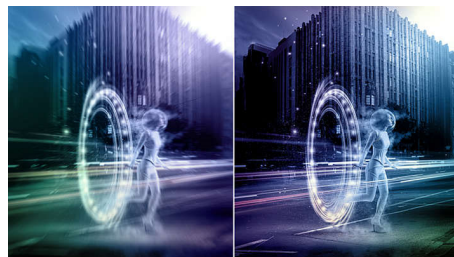
You play intense, competitive gaming. You demand display with lag free, ultra-smooth images. This display redraws the screen image up-to 180 times per second, effectively faster than a standard display. A lower frame rate can make enemies appear to jump from spot to spot on the screen, making them difficult targets to hit. With 180Hz frame rate, you get those critical missing images on the screen which shows enemy movement in ultra-smooth motion so you can easily target them. With ultra-low input lag and no screen tearing, this Philips display is your perfect gaming partner.

## Low input lag



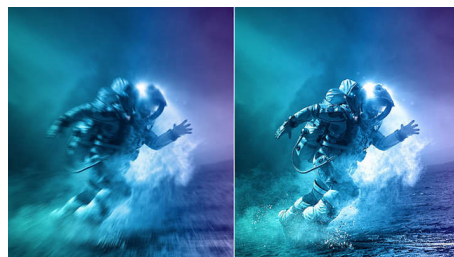
Input lag is the amount of time that elapses between performing an action with connected devices and seeing the result on screen. Low input lag reduces the time delay between entering a command from your devices to monitor, greatly improve on playing twitch-sensitive video games, particularly important to whom plays fast-paced, competitive games.

## 0.5 ms Smart MBR fast response



Philips Evnia with 0.5 ms Smart MBR effectively eliminates smearing and motion blur, delivers sharper and precise visuals to enhance gaming experience. Fast-moving action and dramatic transitions will be rendered smoothly. Best choice for playing thrilling and twitch-sensitive games.

## Fast IPS



This feature is made for action-packed gameplay. Not only does it work four times faster than a conventional IPS panel, but it also pairs well with high frame rates for the utmost gaming quality at rapid speeds with sharp imagery guaranteed.

## 16:9 Full HD display



Picture quality matters. Regular displays deliver quality, but you expect more. This display

features enhanced Full HD 1920 x 1080 resolution. With Full HD for crisp detail paired with high brightness, incredible contrast and realistic colors expect a true to life picture.

## High Dynamic Range (HDR)



High Dynamic Range delivers a dramatically different visual experience. With astonishing brightness, incomparable contrast and captivating color, images come to life with much greater brightness while also featuring much deeper, more nuanced darks. It renders a fuller palette of rich new colors never before seen on display, giving you a visual experience that engages your senses and inspires emotions.

## SmartContrast



SmartContrast is a Philips technology that analyzes the contents you are displaying, automatically adjusting colors and controlling backlight intensity to dynamically enhance contrast for the best digital images and videos or when playing games where dark hues are displayed. When Economy mode is selected, contrast is adjusted and backlighting fine-tuned for just-right display of everyday office applications and lower power consumption.



# Specifications

## Connectivity

- Signal Input: HDMI 2.0 x 2, DisplayPort 1.4 x 1
- Sync Input: Separate Sync
- Audio (In/Out): Audio out
- HDCP: HDCP 1.4 (HDMI / DP), HDCP 2.2 (HDMI / DP)

## Picture/Display

- Panel Size: 23.8 inch / 60.5 cm
- Aspect ratio: 16:9
- LCD panel type: IPS technology
- Backlight type: W-LED system
- Pixel pitch: 0.2745 x 0.2745 mm
- Brightness: 300 cd/m<sup>2</sup>
- Display colors: 16.7 M
- Color gamut (typical): DCI-P3 : 93% , sRGB : 126% , NTSC : 113% , Adobe RGB 110%\*
- Contrast ratio (typical): 1000:1
- SmartContrast: Mega Infinity DCR
- Response time (typical): 1 ms (Gray to Gray)\*
- Viewing angle: 178° (H) / 178° (V), @ C/R > 10
- Picture enhancement: SmartImage game
- Maximum resolution: 1920 x 1080 @ 180 Hz\*
- Effective viewing area: 527.04 (H) x 296.46 (V)
- Scanning Frequency: 30 - 200 kHz (H) / 48 - 180 Hz (V)
- sRGB
- Flicker-free
- Pixel Density: 93 PPI
- LowBlue Mode
- Display Screen Coating: Anti-Glare, 3H, Haze 25%
- Low Input Lag
- EasyRead
- HDR: HDR 10 supported
- Smart MBR: 0.5ms\*

## Convenience

- Built-in Speakers: 2 W x 2
- Plug & Play Compatibility: DDC/CI, Mac OS X, sRGB, Windows 11 / 10
- User convenience: Power On/Off, Menu/OK, Input/Up, Game Settings/Down, SmartImage game/Back
- OSD Languages: Brazil Portuguese, Czech, Dutch, English, Finnish, French, German, Greek, Hungarian, Italian, Japanese, Korean, Polish, Portuguese, Russian, Spanish, Simplified Chinese, Swedish, Turkish, Traditional Chinese, Ukrainian
- Other convenience: Kensington lock, VESA mount

(100x100mm)

## Stand

- Tilt: -5/20 degree

## Power

- Power supply: Internal, 100-240VAC, 50-60Hz
- Off mode: 0.3 W (typ.)
- On mode: 18.7 W (typ.)
- Standby mode: 0.5 W (typ.)
- Power LED indicator: Operation - White, Standby mode- White (blinking)
- Energy Label Class: E

## Dimensions

- Packaging in mm (WxHxD): 610 x 395 x 126 mm
- Product without stand (mm): 540 x 325 x 55 mm
- Product with stand(max height): 540 x 433 x 195 mm

## Weight

- Product with packaging (kg): 5.51 kg
- Product with stand (kg): 3.38 kg
- Product without stand (kg): 2.77 kg

## Operating conditions

- Altitude: Operation: +12,000ft (3,658m), Non-operation: +40,000ft (12,192m)
- Temperature range (operation): 0°C to 40 °C
- MTBF: 50,000 (Excluded backlight) hour(s)
- Relative humidity: 20%-80 %
- Temperature range (storage): -20°C to 60 °C

## Sustainability

- Environmental and energy: RoHS
- Recyclable packaging material: 100 %
- Specific Substances: Mercury free, PVC / BFR free housing

## Compliance and standards

- Regulatory Approvals: CB, TUV/ISO9241-307, TUV-BAUART, EAC, BSMI, CE Mark, UKCA, EMF, FCC, ICES-003, MEPS, PSB, E-standby, KC

## Cabinet

- Color: Charcoal
- Finish: Textured



Issue date 2024-06-30

Version: 4.4.1

EAN: 87 21038 00078 8

© 2024 Koninklijke Philips N.V.  
All Rights reserved.

Specifications are subject to change without notice.  
Trademarks are the property of Koninklijke Philips N.V. or their respective owners.

[www.philips.com](http://www.philips.com)

\* For best output performance, please always ensure that your graphic card is capable of achieving the maximum resolution and refresh rate of this Philips display.

\* Response time value equal to SmartResponse

\* Smart MBR is to adjust brightness for blur reduction, so cannot adjust brightness while Smart MBR is turned on. To reduce motion blur, LED backlight will strobe synchronously with screen refresh, which may cause noticeable brightness change.

\* Smart MBR is gaming-optimized mode. Turn on Smart MBR may cause noticeable screen flickering. It is recommended to turn off when you are not using the gaming function.

\* DCI-P3 Coverage based on CIE1976, sRGB Area based on CIE1931, NTSC Area and Adobe RGB Area based on CIE1976

\* The monitor may look different from feature images.

\* The products and accessories listed on this leaflet may differ by country and region.