

**PREMIUM SERIES LCD MONITOR**



**15" TFT-LCD MONITOR  
(SECURITY)**

## Warning Statements

\* Follow this safety instruction to use the monitor properly and prevent the damages.

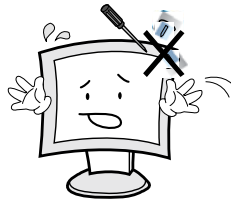
\* This safety instruction has "Warning" and "Caution" as below.

**WARNING:** If the user does not follow this instruction, it may cause the serious damage to the user.

**CAUTION:** If the user does not follow this instruction, it may cause the slight damage to the user or cause some damages to the monitor.

\* Keep this user's guide book for later use.

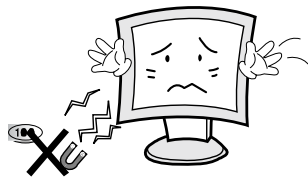
Never remove the back over and touch the inside of the monitor. If you need a service, please contact the service center.



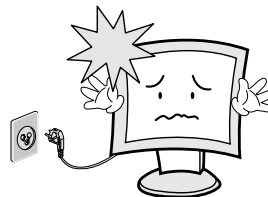
Keep away the monitor from the direct sunlight and a heating appliance.



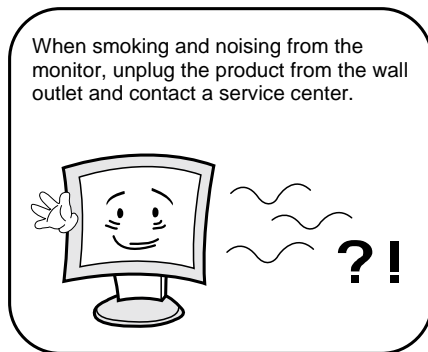
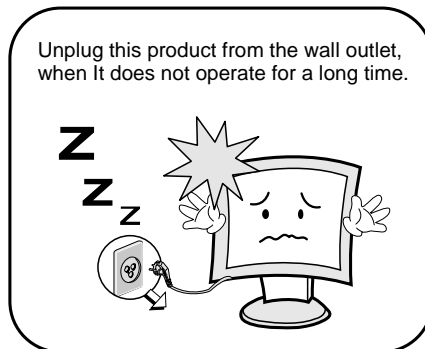
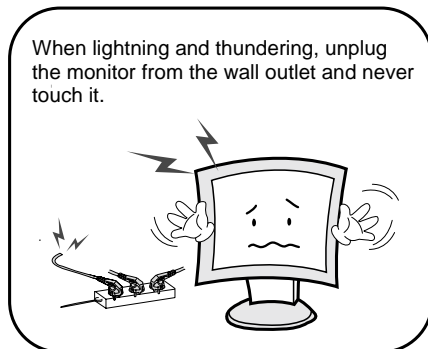
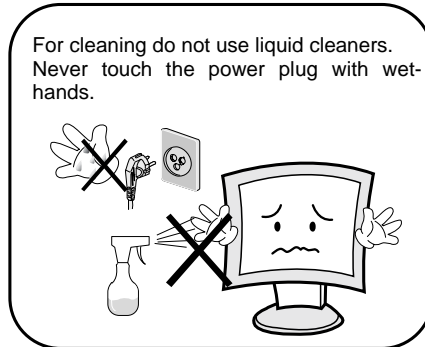
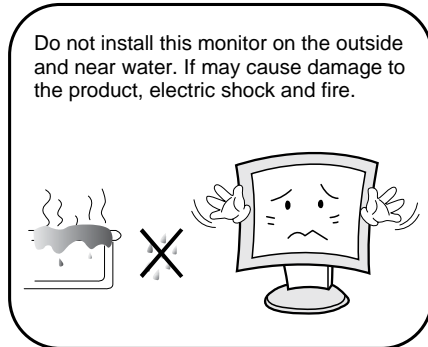
Never push objects of any kind into this product as they may result in a risk of fire or electric shock.



Connect the power code to the wall outlet tightly. If the power code or plug are defective and the wall outlet is not tight, please do not use them.



## Warning Statements

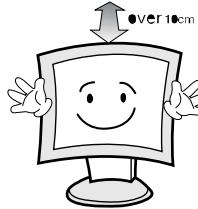


### How to fix

1. Do not open this product as it contains high voltage inside.
2. It may create an electric shock.
3. If the user disassembles and remove the back cover, it does not make sure
4. To make up for the damages and do a service and exchange the monitor..

## Cautions

Install this monitor some distance  
From the wall and do not install unless  
Proper ventilation is provided.



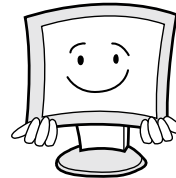
Place this product on a stable place.  
If not, it may fall, causing serious  
Damages to the monitor and people.



The openings must not be blocked by  
curtain, rug or other similar surface.



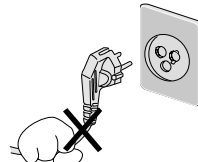
When carrying this monitor, be careful  
not to damage the panel and drop it  
It may cause some trouble.



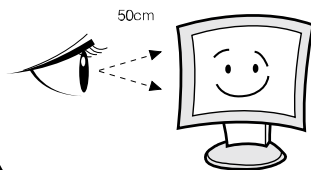
Before carrying the monitor, turn it off  
and Unplug the signal cables and the  
power cord From the wall outlet.



Take the power plug out from the wall  
outlet. Do not pull the cable. It may  
snap the inner wires and cause  
overheating and fire.



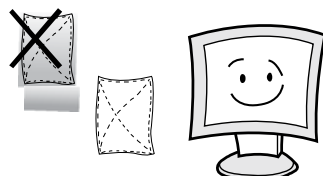
Install this monitor about 50cm far from  
the eyes and an angle of 0~15 degrees  
below eyes. Too close installation may  
cause having weak sight.



Do not press the LCD panel with hands  
or the sharpened material hardly.



For cleaning, unplug the monitor from  
the Wall outlet. Do not use the liquid  
cloth. Use the soft cloth.



Do not use the chemical liquid for  
cleaning. It may cause fading and  
breakage.



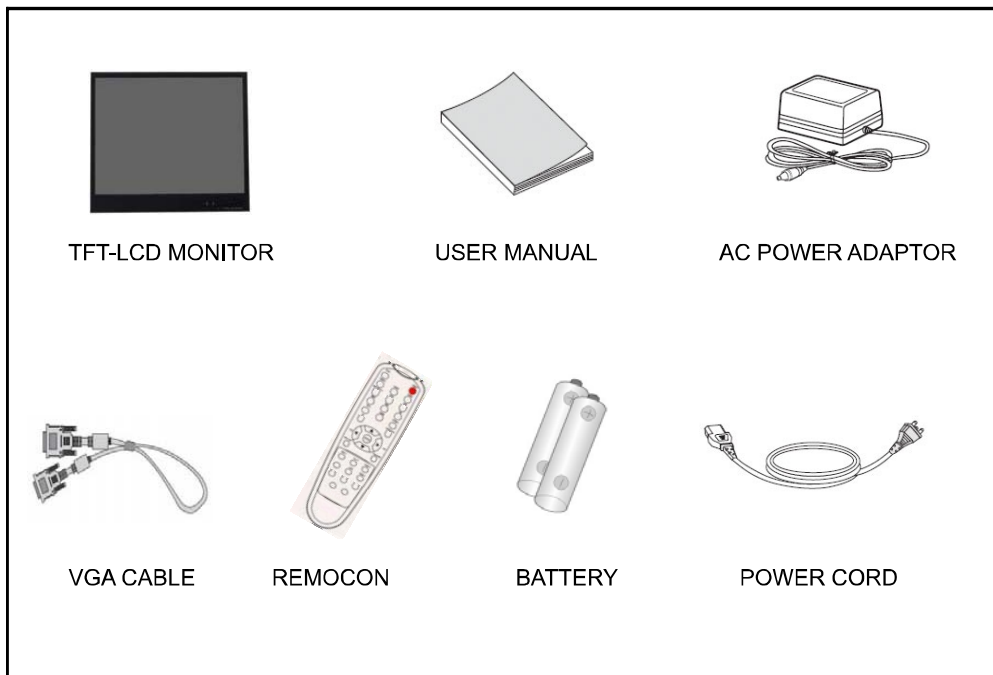
## TABLE OF CONTENTS

<b>1. INSTALLATION</b>	6
1.1 Parts	6
1.2 Connection	7
<b>2. FEATURES</b>	8
2.1 Specifications	8
<b>3. OSD SETTING</b>	9-12
<b>4. CONTROL BUTTON</b>	13
<b>5. APPENDIX</b>	14
5.1 D-SUB Connector PIN Assignment	14
<b>6. INFORMATION TO THE USER</b>	15
<b>7. TROUBLESHOOTING</b>	16
<b>8. LIMITED LIFETIME WARRANTY</b>	17

## INSTALLATION

### 1.1 Parts

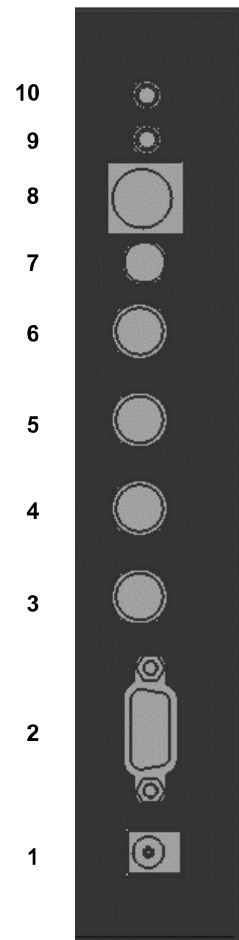
Remove the package cover and place the product on a flat and secure surface or in the installation location. Check whether all the following device and accessories are included with the main system.



## INSTALLATION

### 1.2 Connection

1. **DC 12V IN**
2. **RGB IN**  
RGB signal input
3. **VIDEO1 IN**  
Composite signal input for VIDEO1
4. **VIDEO1 OUT**  
Video looping output for VIDEO1
5. **VIDEO2 IN**  
Composite signal input for VIDEO2
6. **VIDEO2 OUT**  
Video looping output for VIDEO2
7. **S-VIDEO (Y/C) IN**  
Y/C separated signal input
8. **S-VIDEO (Y/C) OUT**  
Y/C separated signal looping output
9. **PC STEREO IN**  
Y/C separated signal input
10. **TRIGGER IN**  
NO / NC signal input



## FEATURES

### 2.1 Specifications (15 Inch)

<b>VIDEO</b>	
Screen Size	15"
Pixel Type	Active Matrix TFT
Max. Resolution	1024 x 768 @ 60Hz (XGA)
Pixel Pitch	0.297 x 0.297mm
Brightness	250 cd/m <sup>2</sup>
Contrast Ratio	450 : 1
Aspect Ratio	4:3
Viewing Angle (H/V)	130 / 110
Display Color	16.2 Million
Response Time	< 12ms
Video System	NTSC / PAL
Frequency (H)	31 ~ 48KHz
Frequency (V)	55 ~ 75Hz
Panel Lamp Life	50,000hours
<b>MECHANICAL</b>	
Packing Dimension	
W x H x D	20.0 x 16.1 x 6.5
Weight	12.1lbs
Power Consumption	35W
Power Source	DC12V adapter (Auto Switching) / 3A

NOTE : Technical specifications are subject to change without notice..



## OSD (On Screen Display) SETTING

### 3.1 OSD MENU Description

#### MENU SELECTION

1. Press the MENU key to access the Main menu.
2. Use the ▲ and ▼ arrow key to highlight a selection
3. Press the OK or ► button to select an item.
4. Use the ▲ and ▼ arrow key to highlight a selection.
5. Use the ◀ and ▶ arrow key to adjust the setting on a selected item.

*NOTE : If you don't connect RGB port, RGB SETUP menu is not select.*

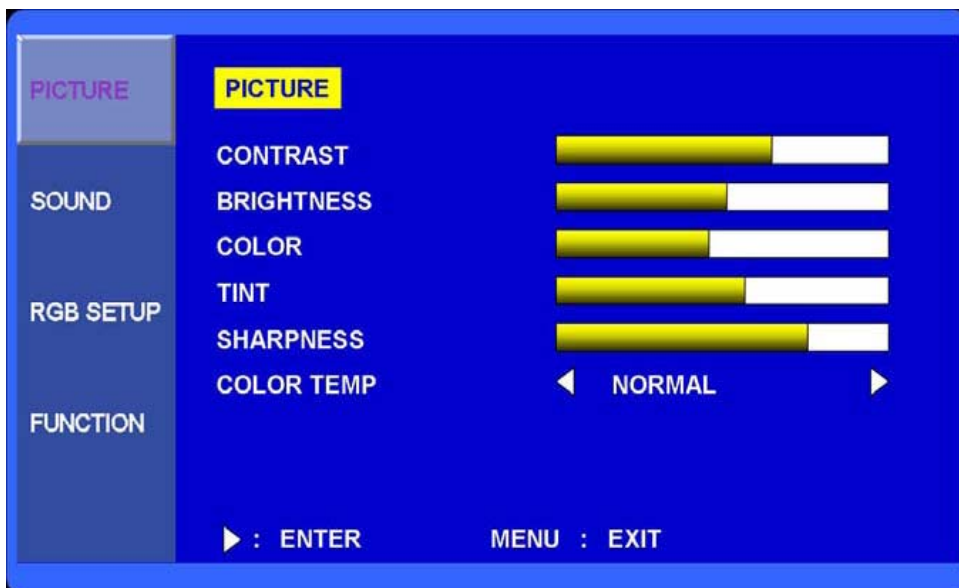
#### A. Input Select



Inputs can be set to VIDEO1, VIDEO2, S-VIDEO and RGB mode.

1. Press the SOURCE button and then ▲/▼ button to move the source.
2. Press the ► button to select the source.
3. Press the MENU/EXIT button to exit the INPUT menu.

#### B. Picture Menu



## OSD (On Screen Display) SETTING

1. Press the MENU/EXIT key and then ▼/◀ or ▲/▶ key to select the PICTURE menu.
2. Press the OK or ▶ button and then ▲/▶ button to select the adjustment item you need.
3. Press the OK or ▶ button to active the item.

EX) If you select the BRIGHTNESS, then the picture below appears on the screen.



4. Press the MENU/EXIT button to move the previous menu..

*NOTE : TINT item is for the NTSC input only.*

### C. Sound Menu



1. Press the MENU button and then ▲/▼ button to select the SOUND menu.
2. Press the ▶ button and then ▲/▼ button to select the adjustment item you need.
3. Press the ▶ button to active the item.

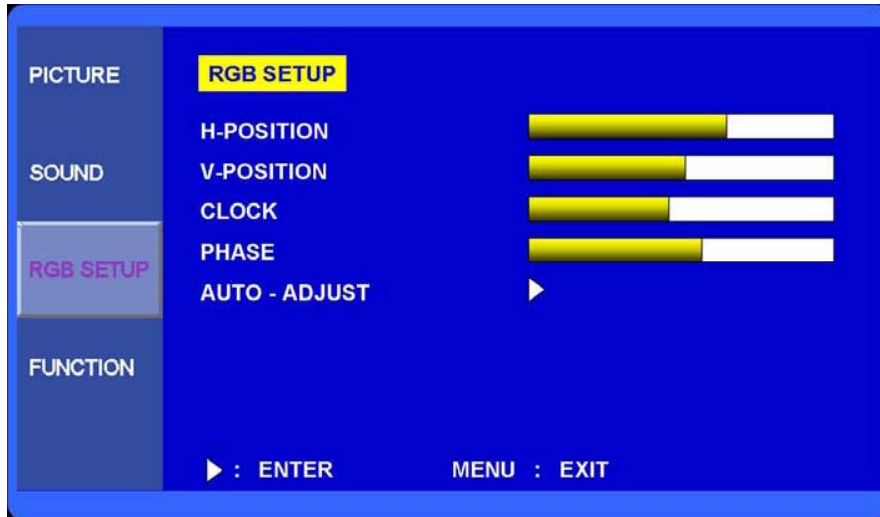
EX) If you select the TREBLE, then the picture below appears on the screen.



4. Press the MENU button to move to the previous menu..

## OSD (On Screen Display) SETTING

### D. RGB Setup Menu



1. Press the MENU button and then ▲/▼ button to select the RGB SETUP menu.
2. Press the ▶ button and then ▲/▼ button to select the adjustment item you need.
3. Press the ▶ button to active the item.
4. Press the MENU button to move to the previous menu.

### E. Function Menu



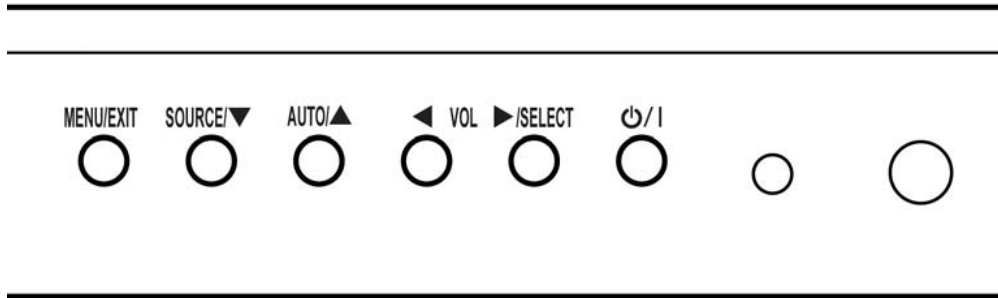
## OSD (On Screen Display) SETTING

### **E. Function Menu (Continue)**

5. Press the MENU button and then ▲/▼ button to select the FUNCTION menu.
6. Press the ► button and then ▲/▼ button to select the adjustment item you need.
7. Press the ► button to active the item.
8. Press the MENU button to move to the previous menu.

LANGUAGE : Select the language: English, French, German, Italian, Spanish.  
DEAFULT : Select RESET to set the monitor to the factory default values.

## CONTROLL BUTTON



**Menu/EXIT:** Activates and exits the OSD.

**SOURCE/▼:** Select input source, and select the OSD menu.

**AUTO/▲:** Move the OSD menu and auto adjustment of RGB source.

**▶/SELECT:** Increase the level of volume and select the OSD menu.

**◀ (VOL):** Decrease the level of volume and move the previous menu.

**⏻/I** Turns the power ON or OFF. There will be a few seconds delay before the display appears.

The power LED(next to the power switch) lights with green when the power is turned ON.

The power is turned off by pressing the power switch again and the power LED goes Red.

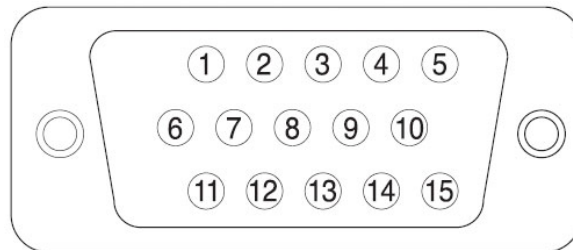
**LED LENS:**

**IR RECEIVE LENS:**

## APPENDIX

### 5.1 D-SUB Connector PIN Assignment

PIN NO.	PIN Name	PIN NO.	PIN Name
1	RED VIDEO	9	NC
2	GREEN VIDEO	10	SIGNAL CABLE DETECT
3	BLUE VIDEO	11	GROUND
4	GROUND	12	SDA (for DDC)
5	GROUND	13	H-SYNC
6	RED GROUND	14	V-SYNC
7	GREEN GROUND	15	SCL (for DDC)
8	BLUE GROUND		



## INFORMATION TO THE USER

This equipment has been tested and found to comply with the limits for a Class B digital device, pursuant to part 15 of the FCC Rules. These limits are designed to provide reasonable protection against harmful interference in a residential installation. This equipment generates, uses and can radiate radio frequency energy and, if not installed and used in accordance with the instructions, may cause harmful interference to radio communications. However, there is no guarantee that interference will not occur in a particular installation. If this equipment does cause harmful interference to radio or television reception, which can be determined by turning the equipment off and on, the user is encouraged to try to correct the interference by one more of the following measures:

- Reorient or relocate the receiving antenna.
- Increase the separation between the equipment and receiver.
- Connect the equipment into an outlet on a circuit different from that to which the receiver is connected.
- Consult the dealer or an experienced radio / TV technician for help.

### **WARNING:**

The manufacturer is not responsible for any Radio or TV interference caused by unauthorized modifications to this equipment. Such modifications could void the user's authority to operate the equipment."

## TROUBLESHOOTING

\* When the following troubles are occurred, follow the trouble shooting. Before contacting a service center.

Troubleshooting	Troubleshooting Tip
<b>The screen doesn't show up</b>	1. Make sure if the power supply is connected property
	2. Turn on the power.
	3. Select the input signal right for the connected port.
<b>The screen is too light or to dark</b>	Control the BRIGHTNESS
<b>The screen size is not fit for the PC signal</b>	Press the AUTO key among keys in the front. (It is used only in the PC signal)
<b>The screen color shows strange in the PC signal</b>	In the FUNCTION menu of OSD menu, perform the AUTO-ADJUST.



## 2Year Limited Warranty

All **Orion Images** products carry a limited warranty from ship date against defects in materials and workmanship. Orion Images is not liable for improper installation that results in damage to mounts, adapters, display equipment or personal injury.

### Contact Orion Images

In the event of missing and/or damage equipment, or technical questions, the following information can help in the completion of the installation.

**Address: 7300 Bolsa Avenue, Westminster, CA 92683**

**Tel: 714-766-6300 / Fax: 714-766-6310**

**Email: [sales@orionimages.com](mailto:sales@orionimages.com)**

**Website: <http://www.orionimages.com>**