



Cisco CSS UCS Platform Series User Guide, KIN-UCSM5-1RU-K9 / KIN-UCSM5-2RU-K9

Revised: June 29, 2018

Americas Headquarters

Cisco Systems, Inc.
170 West Tasman Drive
San Jose, CA 95134-1706
USA
<http://www.cisco.com>
Tel: 408 526-4000
800 553-NETS (6387)
Fax: 408 527-0883

THE SPECIFICATIONS AND INFORMATION REGARDING THE PRODUCTS IN THIS MANUAL ARE SUBJECT TO CHANGE WITHOUT NOTICE. ALL STATEMENTS, INFORMATION, AND RECOMMENDATIONS IN THIS MANUAL ARE BELIEVED TO BE ACCURATE BUT ARE PRESENTED WITHOUT WARRANTY OF ANY KIND, EXPRESS OR IMPLIED. USERS MUST TAKE FULL RESPONSIBILITY FOR THEIR APPLICATION OF ANY PRODUCTS.

THE SOFTWARE LICENSE AND LIMITED WARRANTY FOR THE ACCOMPANYING PRODUCT ARE SET FORTH IN THE INFORMATION PACKET THAT SHIPPED WITH THE PRODUCT AND ARE INCORPORATED HEREIN BY THIS REFERENCE. IF YOU ARE UNABLE TO LOCATE THE SOFTWARE LICENSE OR LIMITED WARRANTY, CONTACT YOUR CISCO REPRESENTATIVE FOR A COPY.

The Cisco implementation of TCP header compression is an adaptation of a program developed by the University of California, Berkeley (UCB) as part of UCB's public domain version of the UNIX operating system. All rights reserved. Copyright © 1981, Regents of the University of California.

NOTWITHSTANDING ANY OTHER WARRANTY HEREIN, ALL DOCUMENT FILES AND SOFTWARE OF THESE SUPPLIERS ARE PROVIDED "AS IS" WITH ALL FAULTS. CISCO AND THE ABOVE-NAMED SUPPLIERS DISCLAIM ALL WARRANTIES, EXPRESSED OR IMPLIED, INCLUDING, WITHOUT LIMITATION, THOSE OF MERCHANTABILITY, FITNESS FOR A PARTICULAR PURPOSE AND NONINFRINGEMENT OR ARISING FROM A COURSE OF DEALING, USAGE, OR TRADE PRACTICE.

IN NO EVENT SHALL CISCO OR ITS SUPPLIERS BE LIABLE FOR ANY INDIRECT, SPECIAL, CONSEQUENTIAL, OR INCIDENTAL DAMAGES, INCLUDING, WITHOUT LIMITATION, LOST PROFITS OR LOSS OR DAMAGE TO DATA ARISING OUT OF THE USE OR INABILITY TO USE THIS MANUAL, EVEN IF CISCO OR ITS SUPPLIERS HAVE BEEN ADVISED OF THE POSSIBILITY OF SUCH DAMAGES.

Cisco and the Cisco logo are trademarks or registered trademarks of Cisco and/or its affiliates in the U.S. and other countries. To view a list of Cisco trademarks, go to this URL: www.cisco.com/go/trademarks. Third-party trademarks mentioned are the property of their respective owners. The use of the word partner does not imply a partnership relationship between Cisco and any other company. (1110R)

Any Internet Protocol (IP) addresses and phone numbers used in this document are not intended to be actual addresses and phone numbers. Any examples, command display output, network topology diagrams, and other figures included in the document are shown for illustrative purposes only. Any use of actual IP addresses or phone numbers in illustrative content is unintentional and coincidental.

Cisco CSS UCS Platform Series User Guide, KIN-UCSM5-1RU-K9 / KIN-UCSM5-2RU-K9
© 2016-2018 Cisco Systems, Inc. All rights reserved.



Preface	iii
Purpose	iii
Revision History	iii
Related Documentation	iii
Obtaining Documentation, Obtaining Support, and Security Guidelines	iv
Command Syntax Conventions	iv

CHAPTER 1

Overview and Installation	1-1
System Overview	1-2
Server Model Comparison	1-2
Cisco CSS UCSM5 1RU Overview	1-3
Cisco CSS UCSM5 2RU Overview	1-4
Installing the Server	1-4
Supported Cisco Connected Safety and Security Hardware Configurations	1-5
Supported NIC (GigE) Ports (Cisco Video Surveillance)	1-5
Server and Accessories Part Numbers	1-5
Server Monitoring and Management Tools	1-6
Cisco Integrated Management Interface (CIMC)	1-6
Cisco Video Surveillance Management Console	1-6
Supported Applications	1-6
Replacing Hardware Components	1-7
Server Specifications	1-7

CHAPTER 2

Supported Applications	2-1
Cisco Video Surveillance Manager, Release 7.11.1 and Higher	2-1
Overview	2-1
Initial Setup Procedure	2-1
Upgrading the Cisco VSM System Software	2-2
Recovering the Cisco VSM System Software	2-2
Supported RAID and Hard Drive Configurations (Cisco VSM)	2-3
Requirements and Conditions	2-3
Supported RAID Upgrade Paths	2-4
Requirements for All Servers	2-5

Cisco CSS UCSM5 1RU Hard Disk Configuration 2-5
Cisco CSS UCSM5 2RU Hard Disk Configuration 2-5
More Information 2-5

APPENDIX 3

Related Documentation 3-1

Data Sheets 3-1
Previous CCS UCS Server Releases 3-1
Cisco UCS C-Series Server Installation Documentation 3-1
Cisco UCS C-Series Server Documentation Roadmap 3-1
Cisco UCS C-Series Regulatory Compliance and Safety Information 3-2
Cisco Connected Safety and Security Product Information 3-2
Cisco Video Surveillance 7 Documentation Roadmap 3-2
Cisco Video Surveillance Manager Documentation Website 3-2



Preface

Purpose

This document summarizes the requirements and supported features of the following Cisco Connected Safety and Security UCS Platform Series servers:

- KIN-UCSM5-1RU-K9
- KIN-UCSM5-2RU-K9

This document also includes a summary of common installation and configuration topics, and links to detailed instructions. Additional summaries are included for the applications supported on the servers, such as the Cisco Video Surveillance Manager.

Revision History

Table 1 *Revision History*

Document Revision Date	Change Summary
June, 2018	Initial version created for the following servers only: <ul style="list-style-type: none">• KIN-UCSM5-1RU-K9• KIN-UCSM5-2RU-K9

Related Documentation

See [“Related Documentation”](#) for more information.

Obtaining Documentation, Obtaining Support, and Security Guidelines

For information about obtaining documentation, submitting a service request, and gathering additional information, see the monthly *What's New in Cisco Product Documentation*. This document also lists all new and revised Cisco technical documentation. It is available at:

<http://www.cisco.com/en/US/docs/general/whatsnew/whatsnew.html>

Subscribe to the *What's New in Cisco Product Documentation* as a Really Simple Syndication (RSS) feed and set content to be delivered directly to your desktop using a reader application. The RSS feeds are a free service and Cisco currently supports RSS version 2.0.



Tip

See “[Related Documentation](#)” for more information and links to Cisco Video Surveillance documentation.

Command Syntax Conventions

Table 2 describes the syntax used with the commands in this document.

Table 2 **Command Syntax Guide**

Convention	Description
boldface	Commands and keywords.
<i>italic</i>	Command input that is supplied by you.
[]	Keywords or arguments that appear within square brackets are optional.
{ x x x }	A choice of keywords (represented by x) appears in braces separated by vertical bars. You must select one.
^ or Ctrl	Represent the key labeled <i>Control</i> . For example, when you read ^D or <i>Ctrl-D</i> , you should hold down the Control key while you press the D key.
screen font	Examples of information displayed on the screen.
boldface screen font	Examples of information that you must enter.
< >	Nonprinting characters, such as passwords, appear in angled brackets.
[]	Default responses to system prompts appear in square brackets.



Overview and Installation

The Cisco Connected Safety and Security UCS Platform Series servers provide a hardware platform for Connected Safety and Security applications, such as the Cisco Video Surveillance Manager. This document describes the features and requirements of the supported server models and includes references to detailed installation and configuration instructions available in related documentation.

The server can be ordered in the following versions:

- KIN-UCSM5-1RU-K9—A 1RU server with a single Intel® Xeon® 4114 processor that supports 16GB of memory and four 3.5-inch drives ([Figure 1-1](#)).
- KIN-UCSM5-2RU-K9—A 2RU server with dual Intel Xeon 4114 processors that supports up to 64GB of memory and twelve 3.5-inch drives ([Figure 1-2](#)).



Note

For information about the previous release of these servers, see [“Related Documentation”](#).

Refer to the following topics for more information.

- [System Overview, page 1-2](#)
 - [Server Model Comparison, page 1-2](#)
 - [Cisco CSS UCSM5 1RU Overview, page 1-3](#)
 - [Cisco CSS UCSM5 2RU Overview, page 1-4](#)
- [Installing the Server, page 1-4](#)
- [Supported Cisco Connected Safety and Security Hardware Configurations, page 1-5](#)
 - [Supported NIC \(GigE\) Ports \(Cisco Video Surveillance\), page 1-5](#)
- [Server and Accessories Part Numbers, page 1-5](#)
- [Server Monitoring and Management Tools, page 1-6](#)
 - [Cisco Integrated Management Interface \(CIMC\), page 1-6](#)
 - [Cisco Video Surveillance Management Console, page 1-6](#)
- [Supported Applications, page 1-6](#)
- [Replacing Hardware Components, page 1-7](#)
- [Server Specifications, page 1-7](#)

System Overview

The Cisco Connected Safety and Security UCS series servers are adapted from the [Cisco UCS C-Series Rack Servers](#), and support a subset of the features available on those servers.

Refer to the following topics for an overview of the supported server models and features.

- [Server Model Comparison, page 1-2](#)
- [Cisco CSS UCSM5 1RU Overview, page 1-3](#)
- [Cisco CSS UCSM5 2RU Overview, page 1-4](#)

Server Model Comparison

The Cisco Connected Safety and Security UCS series servers are available in a 1RU and 2RU configuration and include the following features:

Table 1-1 Supported Hardware Feature Comparison

Feature	KIN-UCSM5-1RU-K9	KIN-UCSM5-2RU-K9
Form-Factor	1 RU	2 RU
Processor	Single Intel® Xeon® 4114 processor	Dual Intel Xeon 4114 processors
Memory	16GB	64GB
HDD ¹	A maximum of 40 TB with four 10 TB 3.5-inch drives	A maximum of 120 TB with twelve 10 TB 3.5-inch drives

1. 3.5-inch large form factor (LFF) SAS hard drives

See the [Cisco Connected Safety and Security UCS Platform Series Data Sheet](#) for additional details.



Note

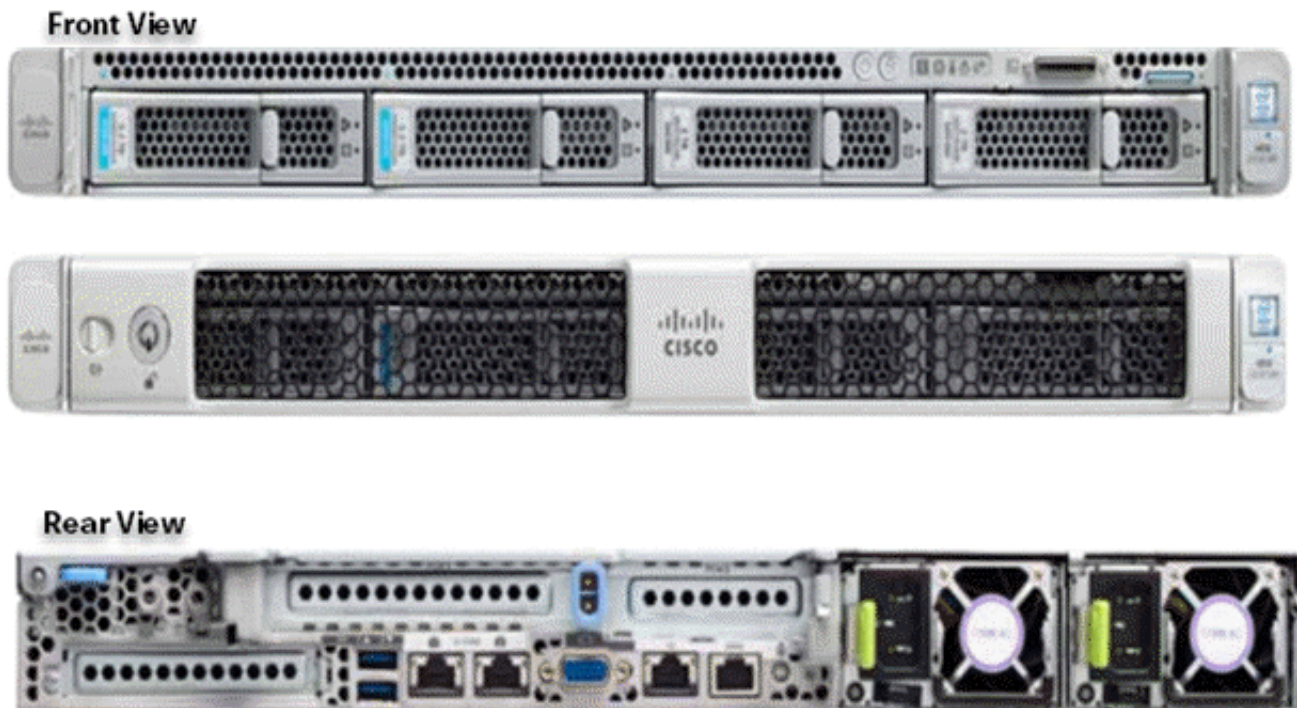
The supported features described in [Table 1-1](#) are a sub-set of the features supported by the [Cisco UCS C-Series Rack Server](#) platform.

Cisco CSS UCSM5 1RU Overview

The Cisco CSS UCSM5 1RU is a 1RU server available in the large form factor (LFF) only, which supports up to four 3.5-inch SAS hard drives.

Figure 1-1 shows the front and rear panel features of server.

Figure 1-1 Cisco CSS UCSM5 1RU Server (LFF Drives) Front and Rear Panel



For more information, including front and rear panel descriptions and the location and meaning of LEDs and buttons, see the [External Features](#) section of the [Cisco UCS C220 M5 Server Installation and Service Guide](#).

**Note**

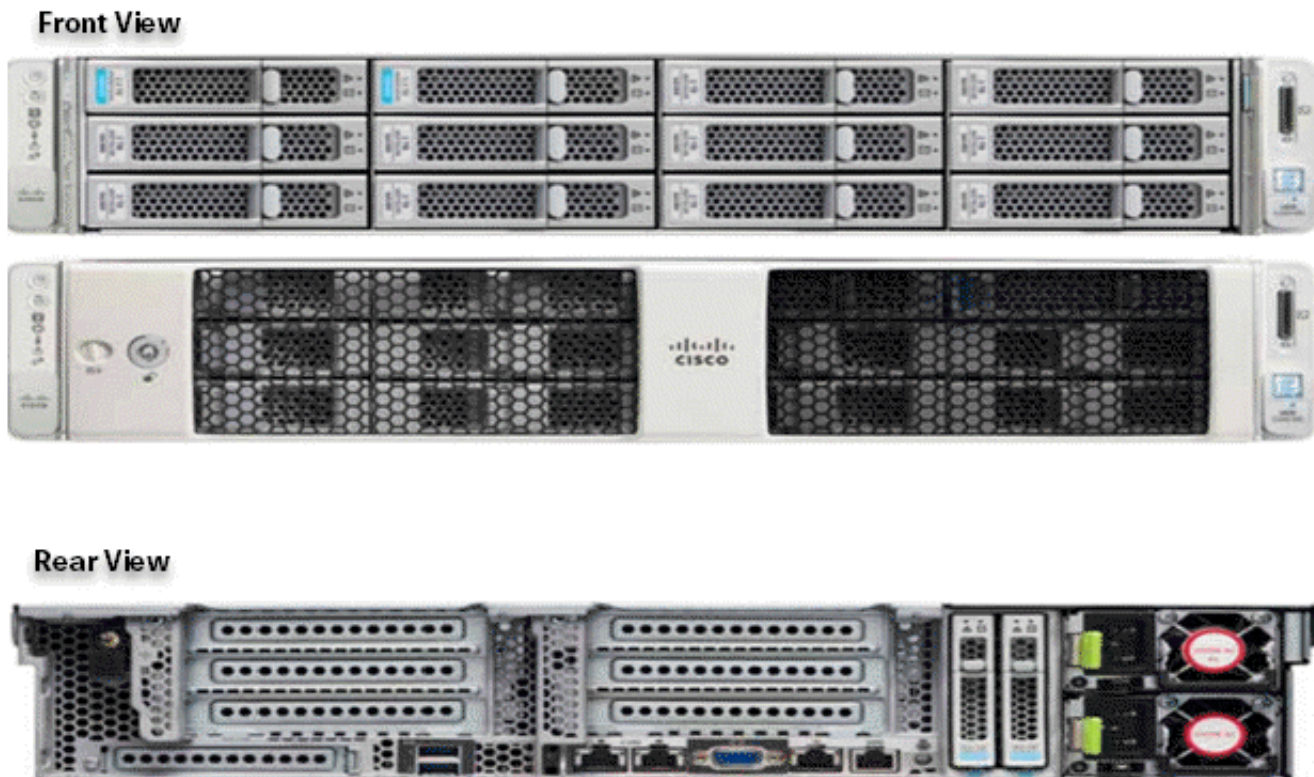
The small form-factor (SFF) version of the Cisco UCS C220 M5 1RU Server is not supported for Cisco Connected Safety and Security applications.

Cisco CSS UCSM5 2RU Overview

The Cisco CSS UCSM5 1RU is a 1RU server available in the large form factor (LFF) only, which supports up to four 3.5-inch SAS hard drives.

Figure 1-2 shows the front and rear panel of the server.

Figure 1-2 Cisco CSS UCSM5 2RU Server (LFF Drives) Front and Rear Panel



For more information, including front and rear panel descriptions and the location and meaning of LEDs and buttons, see the [External Features](#) section of the [Cisco UCS C240 M5 Server Installation and Service Guide](#).



Note

The small form-factor (SFF) version of the Cisco UCS C240 M5 2RU Server is not supported for Cisco Connected Safety and Security applications.

Installing the Server

To physically install the servers, refer to the following documents:

- [Cisco UCS C220 M5 Server Installation and Service Guide](#)
- [Cisco UCS C240 M5 Server Installation and Service Guide](#)

**Note**

Before you install, operate, or service a server, review the [Regulatory Compliance and Safety Information for Cisco UCS C-Series Servers](#) for important safety information.

Supported Cisco Connected Safety and Security Hardware Configurations

- [Supported NIC \(GigE\) Ports \(Cisco Video Surveillance\)](#), page 1-5

Supported NIC (GigE) Ports (Cisco Video Surveillance)

The Cisco Connected Safety and Security UCS series servers support the following:

- One 1-Gb Ethernet dedicated management port
- Two 10-Gb Base-T Ethernet ports for video data

**Note**

- The LAN Ethernet ports are referred to as “Eth 0” and “Eth1” in the Cisco Connected Safety and Security applications, such as Cisco Video Surveillance.
- The Cisco Connected Safety and Security UCS series servers do NOT support the NIC redundancy modes. Only the *None* option is supported: the Ethernet ports operate independently and do not fail over if there is a problem.

Server and Accessories Part Numbers

The following servers and field replaceable units (FRUs) are supported by the Cisco Connected Safety and Security UCS Platform Series servers. Refer to these PIDs when ordering new or replacement components.

Table 1-2 Part Numbers for the Cisco Connected Safety and Security UCS Platform Series

	Item	Specification
Server appliance	KIN-UCSM5-1RU-K9	Cisco Connected Safety and Security UCS C220 M5 1-RU chassis with motherboard, one 2.2 GHz 4114 CPU, 16 GB DDR4 memory, and one 770W power supply (no drives and no option cards)
	KIN-UCSM5-2RU-K9	Cisco Connected Safety and Security UCS C240 M5 2-RU chassis with motherboard, dual 2.2 GHz 4114 CPUs, 64GB DDR4 memory, and dual 1050W power supplies (no drives and no option cards)

Table 1-2 Part Numbers for the Cisco Connected Safety and Security UCS Platform Series (continued)

Hard Drives	KIN-HD2T7KL12N	2 TB 12G SAS 7.2K RPM LFF HDD
Options for selection at time of order	KIN-HD4T7KL12N	4 TB 12G SAS 7.2K RPM LFF HDD
	KIN-HD10T7KL4KN	10 TB 12G SAS 7.2K RPM LFF HDD (4K)
	UCSC-BBLKD-S2	3.5-inch HDD blanking panel
Upgrade Options at Time of Order	KIN-PCIE-BD16GF	Emulex LPe31002 dual port 16G Fibre Channel HBA

Server Monitoring and Management Tools

The following software tools are used to monitor server health and events:

- [Cisco Integrated Management Interface \(CIMC\)](#), page 1-6
- [Cisco Video Surveillance Management Console](#), page 1-6

Cisco Integrated Management Interface (CIMC)

You can monitor the server inventory, health, and system event logs by using the built-in Cisco Integrated Management Controller (CIMC) GUI or CLI interfaces. See the user documentation for your firmware release at the following URL:

http://www.cisco.com/en/US/products/ps10739/products_installation_and_configuration_guides_list.html

Cisco Video Surveillance Management Console

For the Cisco Video Surveillance Manager application, use the browser-based Cisco VSM Management Console to configure, manage and monitor the server.

See the following documents for more information:

- [Cisco Video Surveillance Management Console Administration Guide](#)
- [Cisco Video Surveillance Manager: Install and Upgrade Guide](#)

Supported Applications

The current release of the Cisco Connected Safety and Security UCS series servers support the Cisco Video Surveillance Manager and associated servers and devices. See the following for more information:

- [Supported Applications](#), page 2-1
- [Related Documentation](#), page 3-1
- The Cisco Video Surveillance 7 Documentation Roadmap available at <http://www.cisco.com/go/physicalsecurity/vsm/roadmap>. This document provides descriptions and links to Cisco Video Surveillance documentation, server and storage platform documentation, and other related documentation.

Replacing Hardware Components

For information on how to install or replace hardware components, see:

- [Maintaining the Server](#) section of the [Cisco UCS C240 M5 Server Installation and Service Guide](#).
- [Maintaining the Server](#) section of the [Cisco UCS C240 M5 Server Installation and Service Guide](#).

Server Specifications

See the [Cisco Connected Safety and Security UCS Platform Series Data Sheet](#) for information regarding supported features and options.

See the following for detailed technical specifications:

- [Cisco Connected Safety and Security UCSM5 1RU Specifications](#)
- [Cisco Connected Safety and Security UCSM5 2RU Specifications](#)



Supported Applications

The KIN-UCSM5-1RU-K9 and KIN-UCSM5-2RU-K9 servers support the following application:

- [Cisco Video Surveillance Manager, Release 7.11.1 and Higher, page 2-1](#)

Cisco Video Surveillance Manager, Release 7.11.1 and Higher

- [Overview, page 2-1](#)
- [Initial Setup Procedure, page 2-1](#)
- [Upgrading the Cisco VSM System Software, page 2-2](#)
- [Recovering the Cisco VSM System Software, page 2-2](#)
- [Supported RAID and Hard Drive Configurations \(Cisco VSM\), page 2-3](#)
- [More Information, page 2-5](#)

Overview

The KIN-UCSM5-1RU-K9 and KIN-UCSM5-2RU-K9 servers support the Cisco Video Surveillance Manager (Cisco VSM) Release 7.11.1 and higher, including associated servers and devices.

These servers are shipped as server appliances, meaning that the Cisco Video Surveillance Manager system software is pre-loaded in a “bare-metal” configuration.



Note

These servers do not currently support virtual machine (VM) installations.

Initial Setup Procedure

To install and configure a Cisco Connected Safety and Security UCS series server appliance for the first time, complete the following high-level steps:

Procedure

-
- Step 1** Physically install the Cisco Connected Safety and Security UCS series server and complete the initial server setup.

- See the [Installing the Server, page 1-4](#).
- Step 2** Complete the initial server setup.
- [KIN-UCSM5-1RU-K9: Initial Serer Setup](#)
 - [KIN-UCSM5-2RU-K9: Initial Server Setup](#)
- Step 3** Use the browser-based Cisco Video Surveillance Management Console to complete the initial server setup for the Cisco Video Surveillance Manager.
- See the [Cisco Video Surveillance Management Console Administration Guide](#).
- Step 4** Use the browser-based Cisco Video Surveillance Operations Manager to configure additional server options and Cisco VSM features.
- See the [Cisco Video Surveillance Operations Manager User Guide](#).
-

Upgrading the Cisco VSM System Software

To update the Cisco VSM system software, use the browser-based Cisco VSM Operations Manager or Cisco VSM Management Console to install the upgrade file that contains all required packages and components.

See the [Cisco Video Surveillance Manager: Install and Upgrade Guide](#) for your release.

Recovering the Cisco VSM System Software

To create a bootable USB flash drive that can be used to recover an installation or perform a factory installation of Cisco VSM 7.

See the [Cisco Video Surveillance Manager: Install and Upgrade Guide](#) for your release.

The recovery options include the following:

Table 2-1 Recovery Options



Option	Description
recovery	Reinstalls the operating system. <ul style="list-style-type: none"> • Recorded video is preserved. • RAID configurations are preserved (only the OS partitions are formatted).
factory	Restores the server to the factory default settings: <ul style="list-style-type: none"> • Reinstalls the operating system. • Clears and reconfigures the RAID. You must disconnect any external storage before using this option. • Recorded video and configurations are deleted. • RAID-6 is configured on the Cisco CSS UCSM5 2RU server.
	 Caution This action deletes all data and video files.

Table 2-1 Recovery Options

Option	Description
factory_raid5	<p>Restores a Cisco CSS UCSM5 2RU server to the factory default settings, including:</p> <ul style="list-style-type: none"> Reinstalls the operating system Clears and reconfigures the RAID. You must disconnect any external storage before using this option. Recorded video and configurations are deleted Valid only on the Cisco CSS UCSM5 2RU. See Table 2-2. <p> Caution This action deletes all data and video files.</p>
rescue	<p>Boot to prompt from USB media.</p> <p>Use this option to recover a password or for other administrative tasks</p>

Supported RAID and Hard Drive Configurations (Cisco VSM)

[Table 2-2](#) defines the drive configurations supported by the Cisco Video Surveillance Manager. The Cisco CSS UCSM5 1RU server supports RAID 1 and 5, while the Cisco CSS UCSM5 2RU server supports RAID levels 1, 5 and 6.

Table 2-2 Supported Drive Configurations

KIN-UCSM5-1RU-K9	2 drives	RAID 1
	4 drives	RAID 5
KIN-UCSM5-2RU-K9	2 drives	RAID 1
	6 drives	RAID 5 or RAID 6
	12 drives	

Requirements and Conditions

The following notes apply to drive configurations, recovery and expansion.

- All drives must be installed in the lowest numbered available slot.
- Hot Standby drives are not supported.
- Mixing RAID configurations is not supported. For example, 6 drives in RAID 6, and 6 drives in RAID 5).
- RAID expansion is not supported during a “Recovery” installation (RAID configuration remains the same during a “Recovery” installation).
- RAID configuration may be changed during a “Factory” reimage (note that all data will be lost unless backed up prior to the procedure).

Supported RAID Upgrade Paths

Table 2-3 defines the supported paths to add additional drives.

Table 2-3 Supported Upgrade Paths

	From	To	Notes
Cisco CSS UCSM5 1RU	2 drives	4 drives/RAID 5	RAID Change, Factory Reimage required
Cisco CSS UCSM5 2RU	2 drives/RAID 1	6 drives/RAID 5	RAID Change, Factory Reimage required
	2 drives/RAID 1	6 drives/RAID 6	
	2 drives/RAID 1	12 drives/RAID 5	
	2 drives/RAID 1	12 drives/RAID 6	
	6+ drives/RAID 5	12 drives/RAID 6	
	6+ drives/RAID 6	12 drives /RAID 5	
	6+ drives/RAID 5	12 drives (as 1 RAID Group) /RAID 5	Factory Reimage required. Dynamic expansion of existing VD, /media partitions not supported
6+ drives/RAID 6	12 drives (as 1 RAID Group) /RAID 6		



Note

You can order drives in bundles of 2 drives. The bundles are for replacement and for expansion to get to four drives. These drives that are shipped are of the same capacity. They can be 2TB, 4TB, or 10TB. See the [“Server and Accessories Part Numbers”](#) section on page 1-5 for more information.



Note

RAID configuration changes require a “Factory” reimage. All data will be lost unless backed up prior to the procedure.

Requirements for All Servers

- Drives are not rebuilt when the same drive is removed and reinserted. The removed drive must be replaced with a new drive. The rebuild will start automatically.
- All drives must be of the same capacity. Drives of different capacities are not supported (for example, you cannot mix 2TB, 4TB and/or 10TB drives in the same server).
- Installation is supported only if all hard drives are in “configured good” state.
- See the [“Replacing Hard Drives” section on page 4-9](#) for more information.

Cisco CSS UCSM5 1RU Hard Disk Configuration

- The Cisco CSS UCSM5 1RU server ships with 2 or 4 disk drives (other combinations are not supported).
- Up to four large form factor (LFF) disk drives (3.5” hard drives) of 2TB, 4TB and 10 TB are supported. These are driven directly from the RAID controller and do not require any expander.
- RAID levels 1, 5 are supported. See the [“Supported RAID and Hard Drive Configurations \(Cisco VSM\)” section on page 2-3](#).

Cisco CSS UCSM5 2RU Hard Disk Configuration

- Cisco CSS UCSM5 2RU server ships with 2, 6 or 12 disk drives.
- Up to 12 large form factor (LFF) disk drives (3.5” hard drives) of 2TB, 4TB and 10TB are supported. These are driven directly from the RAID controller and do not require any expander.
- RAID levels 1, 5 and 6 are supported. See the [“Supported RAID and Hard Drive Configurations \(Cisco VSM\)” section on page 2-3](#).

More Information

See the following for more information:

- [Replacing Hard Drives, page 4-9](#)
- [Related Documentation, page 3-1](#)
- The Cisco Video Surveillance 7 Documentation Roadmap available at <http://www.cisco.com/go/physicalsecurity/vsm/roadmap>. This document provides descriptions and links to Cisco Video Surveillance documentation, server and storage platform documentation, and other related documentation.



Related Documentation

This document describes installation of the following Cisco Connected Safety and Security servers:

- KIN-UCSM5-1RU-K9
- KIN-UCSM5-2RU-K9

Data Sheets

See the [Cisco Connected Safety and Security UCS Platform Series Data Sheet](#).

Previous CCS UCS Server Releases

Table 1 *Previous Server Releases*

Servers	Related Documentation
CPS-UCSM4-1RU-K9 CPS-UCSM4-2RU-K9	Cisco CSS UCS Server User Guide: CPS-UCSM4-1RU-K9 and CPS-UCSM4-2RU-K9
CPS-UCS-1RU-K9 CPS-UCS-2RU-K9	Cisco Physical Security UCS Platform Series User Guide, CPS-UCS-1RU-K9 / CPS-UCS-2RU-K9

Cisco UCS C-Series Server Installation Documentation

[Cisco UCS C-Series Rack Servers](#)

Cisco UCS C-Series Server Documentation Roadmap

www.cisco.com/go/unifiedcomputing/c-series-doc

Cisco UCS C-Series Regulatory Compliance and Safety Information

www.cisco.com/go/physicalsecurity/ucs/resi

Cisco Connected Safety and Security Product Information

www.cisco.com/go/physicalsecurity/

Cisco Video Surveillance 7 Documentation Roadmap

Descriptions and links to Cisco Video Surveillance documentation, server and storage platform documentation, and other related documentation.

<http://www.cisco.com/go/physicalsecurity/vsm/roadmap>

Cisco Video Surveillance Manager Documentation Website

www.cisco.com/go/physicalsecurity/vsm/docs