

UNIVERSAL USB-C DOCKING STATION

UCDDS-1



TABLE OF CONTENTS

1 INTRODUCTION			
Features		1	
Package Contents		1	
System Requirements		1	
2 PRODUCT OVERVIEW			
Front		2	
Rear		2	
3 INSTALLATION			
Windows 7/8		3	
Mac OS		4	
Verifying the Installation		6	
4 DISPLAY CONFIGURATION			
Utility Settings		9	
Description of the Settings		10	
Multi-Monitor Configuration		11	
Extended Mode		13	
Mirror Mode		13	
Be the Primary Monitor		13	
Windows Shortcut		14	
5 AUDIO CONFIGURATION			15
6 UNINSTALL THE DRIVER			16
7 SPECIFICATION			18
8 LEGAL			
Safety Instructions			19
Copyright			19
Trademarks			19
9 REGULATORY COMPLIANCE			
FCC Conditions			20
CE			20
WEEE Information			20

The V7 UCDDS docking station is designed for extra connectivity demands. With the docking station, you can extend the connection of your computer with more USB peripherals, Ethernet connection, speaker, and the microphone through one single USB cable.

With the built-in USB 3.0 ports, the docking station enables you to enjoy the super speed data transmission between USB peripherals. Aside from USB 3.0, this product is compliant with USB 1.1/2.0 standard.

In addition, the docking station is equipped with video output. You can mirror your primary screen or extend the desktop allowing visibility of more applications at the same time. Enhanced expansion capability plus the stylish appearance, this docking station with video is the most versatile accessory that also complements your home or office space.

Features

- Compatible with both USB Type-C + USB Type A laptop/desktop computers
- Resolution up to 5120x2880
- 2.1 audio channel connection
- Gigabit Ethernet connection
- HDMI/DP connection
- BC 1.2 charging

Package contents

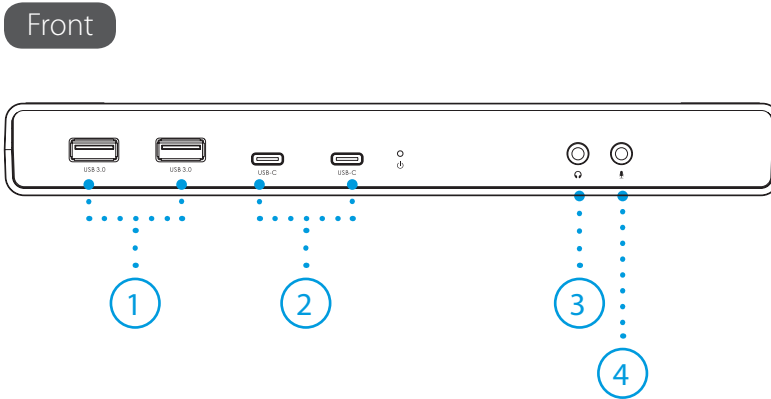
- Docking Station
- USB 3.1 C to C Cable
- USB 3.0 A to C Cable
- Power Adapter w/ Power Cord
- CD (Driver and User's Manual)
- Quick Installation Guide

System Requirements

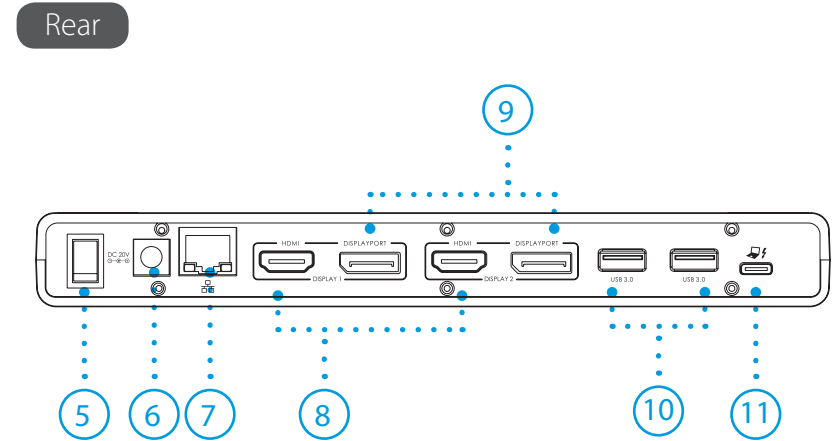
The Minimum Requirements

- CPU: 1.6GHz single core or higher processor clock.
 - › Intel Pentium/Celeron family
 - › AMD K6/Athlon/Duron family or compatible processor
- RAM: 1GB or above
- USB Type C/2.0/3.0
- 30MB of available disk space
- Operating Systems:
 - › Microsoft: Windows® 7 SP1 or later / Windows® 8 / Windows 10
 - › Apple: Mac OS X® 10.9 or later

2 PRODUCT OVERVIEW



Item	Description
1	2 x USB 3.0 Port Connect to USB 3.0 Devices
2	USB Type-C Port Connect to USB Type-C devices
3	Speaker Jack Connect to Speaker or Earphone
4	MIC Jack Connect to Microphone



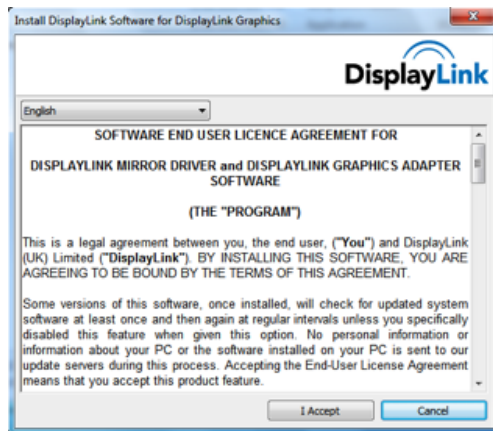
Item	Description
5	Power Switch Turn Device On/Off
6	Power Jack Connect to power adapter
7	RJ45 Port Connect to Ethernet
8	HDMI Connector Connect to a HDMI monitor or projector
9	DisplayPort Connector Connect to a DisplayPort moniator or projector
10	2 x USB 3.0 port Connect to USB 3.0 devices
11	USB Type-C Connect to Computer

Note: Make sure the drivers are installed before connecting the V7 UCDDS to your computer for best experience. You may also download the latest drivers from www.displaylink.com

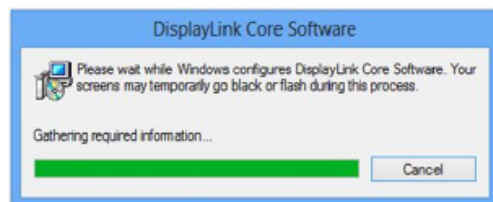
Windows® 7/8



- Insert the supplied driver CD into the CD/DVD- ROM.
- Click **Run Setup.exe** to start the installation.

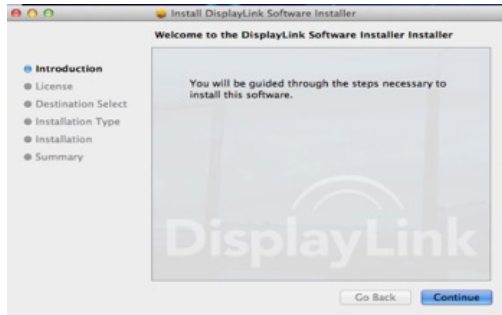


- If the **AutoPlay** does not appear automatically, locate and double-click on the **Setup.exe** file in the driver folder to launch the setup.
- Click **I Accept** to continue driver setup

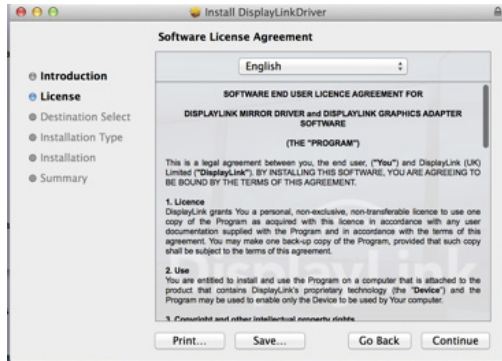


- Please wait while the installation is in process
- Connect the Docking Station to a computer after the driver installation to complete installation

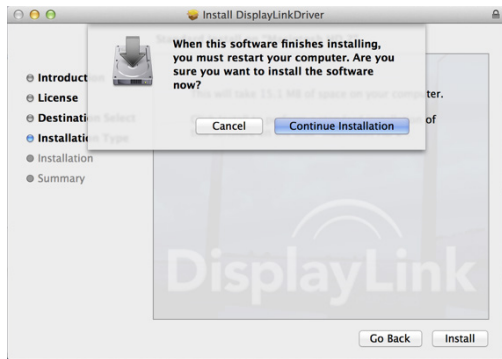
Mac OS X®



- Insert the supplied driver CD into the CD/DVD ROM
- Click **Run Driver.dmg** to start the installation, and click **Continue**

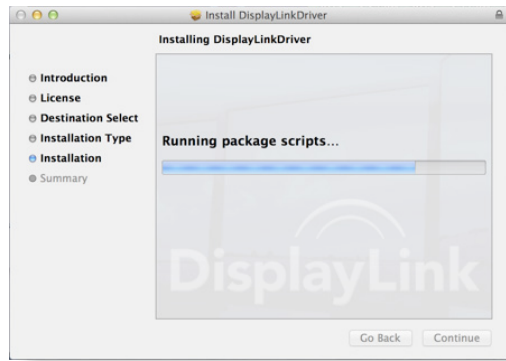


- Click **Continue** in Software License Agreement

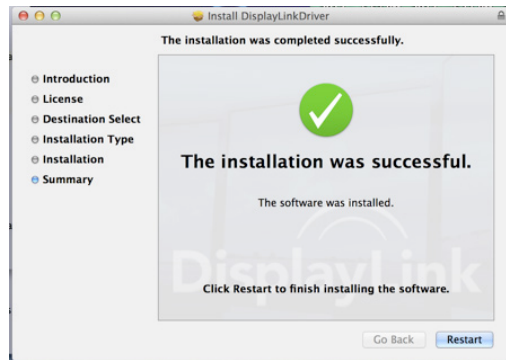


- Click **Agree > Install > Continue Installation**

INSTALLATION



- Please wait while the installation is in process.



- Installation was successful.

Verifying the Installation

To verify the driver of the adapter, follow the step below

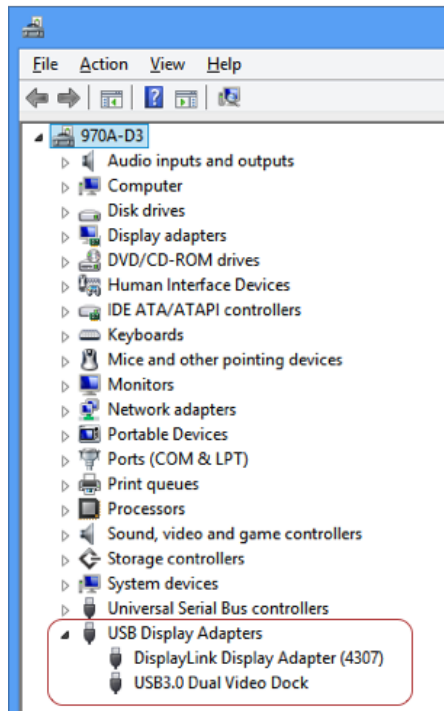
- Follow the path to open the device manager

Windows® 7

Control Panel\ System and Security\ Systems\ Device Manager

Windows® 8 / Windows® 8.1

Settings\ Control Panel \ System and Security\ System\ Device Manager



- You will find **Displaylink Adapter** device list.

Note: If you cannot find the driver, it may not be properly installed.
Please unplug the device and repeat the installation steps.

Mac OS X®



- Click on the Apple Icon on the top left corner of the screen to open **About This Mac**



- Click **More Info...**



- Click **System Report...**

- You will find DisplayLink Adapter in the device list.

▼ Network

- Firewall
- Locations
- Volumes
- WWAN
- Wi-Fi

▼ Software

- Accessibility
- Applications
- Components
- Developer
- Disabled Software
- Extensions**
- Fonts
- Frameworks
- Installations
- Logs
- Managed Client
- Preference Panes
- Printer Software
- Profiles
- Startup Items

CoreStorage	380	9/19/13, 10:21 PM	No	Apple
CoreStorageFsck	380	9/19/13, 10:21 PM	No	Apple
CSRBluetoothHostControllerUSBTransport	4.2.0	9/20/13, 8:18 PM	No	Apple
CSRHIDTransitionDriver	4.2.0	9/20/13, 8:18 PM	No	Apple
DisplayLinkDriver	2.1 (51922)	12/22/13, 7:10 PM	Yes	Identified Developer
DisplayLinkEthernetDriver	1.11.0	12/22/13, 7:10 PM	Yes	Identified Developer

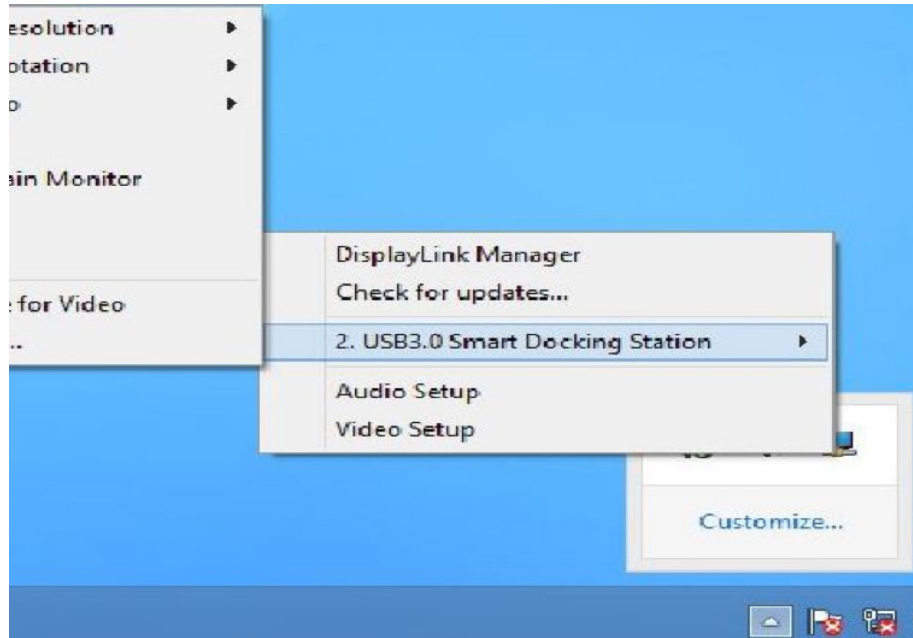
DisplayLinkDriver:

Version: 2.1 (51922)
 Last Modified: 12/22/13, 7:10 PM
 Loaded: Yes
 Get Info String: DisplayLink Driver 2.1 (51922) – Copyright © 2003 – 2013 DisplayLink (UK) Ltd. All rights reserved.
 Obtained from: Identified Developer
 Kind: Intel
 Architectures: i386, x86_64
 64-Bit (Intel): Yes
 Location: /Library/Extensions/DisplayLinkDriver.kext
 Kext Version: 2.1
 Load Address: 1844674352182880000
 Valid: Yes
 Authentic: Yes
 Dependencies: Satisfied
 Signed by: Developer ID Application: DisplayLink Corp (73YQY62QM3), Developer ID Certification Authority, Apple Root CA

Utility Settings

The supplied utility allows configuring the display mode, screen rotation, screen resolution, and physical arrangement of your monitors.

1. Click utility icon  in **Windows System Tray**.
2. Choose the Monitor preference you would like to display.



Description of Settings

Options	Description
DisplayLink Manager	Enable the Windows screen resolution
Check for Updates	Check the latest driver and download if available
USB 3.0 Video Dock	Video Dock Preference
Screen Resolution	Click to select an available resolution. Note that this function is invalid in mirror mode, as the resolution is defined as the resolution of the primary monitor
Screen Rotation	Rotate the screen according to the desired orientation
Extend	Extend the main screen
Extend To	The cursor can extend to desired screen via left/right/above/below
Set as Main Monitor	Set this screen to the main screen
Notebook Monitor OFF	Switch the monitor to the main display and turn off the screen of the laptop. NOTE: This function may not appear
Mirror	Duplicate computer screen
Off	Turn off monitor
Optimize for Video	Optimize the video quality when playing back. Text may appear less clear when enabled
Fit to TV	Adjust the size of Windows Desktop NOTE: This function will only work only when at least one monitor is connected.
Audio Setup	Enable the Windows audio configuration page.
Video Setup	Enable the Windows screen resolution page.

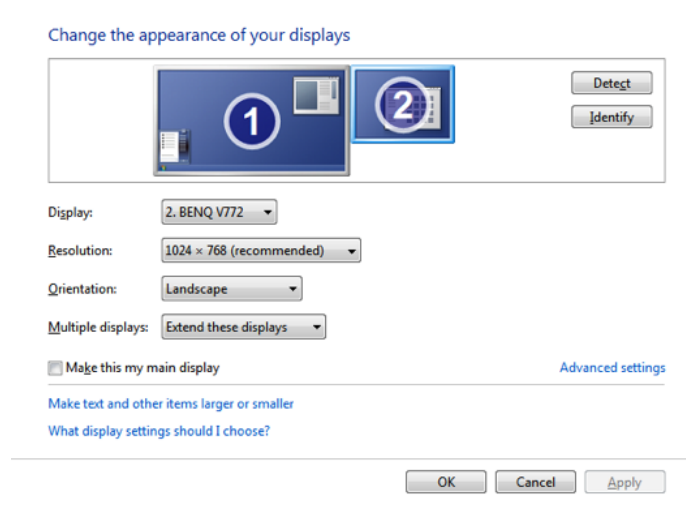
Multi-Monitor Configuration

The docking station is able to support 2 monitors simultaneously. Once the monitors are connected, it can be configured to use in either "Mirror Mode", "Extended Mode" or be the primary display.

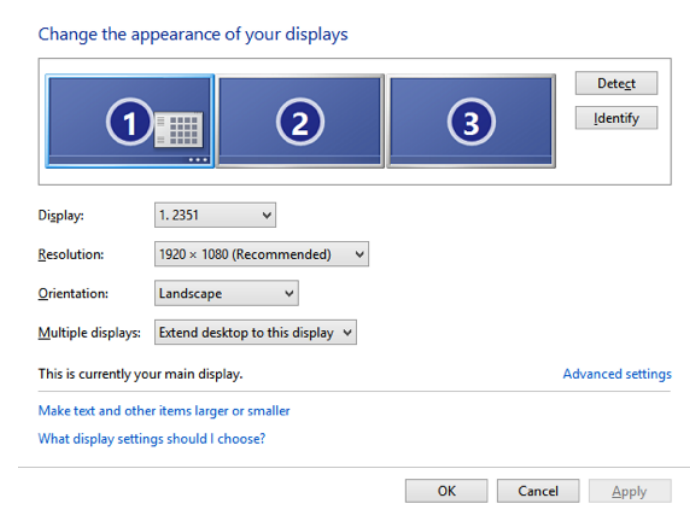
Windows® 7/8

Position the mouse anywhere on the desktop, right-click and select **Screen Resolution**.

Single Display



Dual Display



Alternatively, click utility icon  in the **Windows System Tray**, and then select **DisplayLink Manager**.

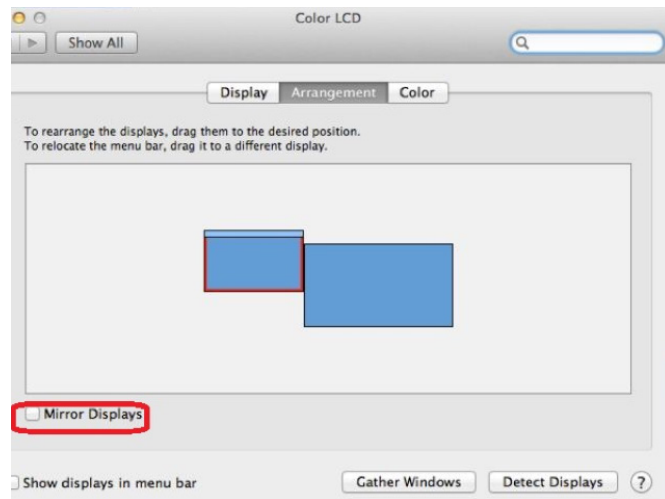
Mac OS X®

1. Click the **Apple Icon** of the upper left icon in screen and select **System Preferences...** on the drop-down list.

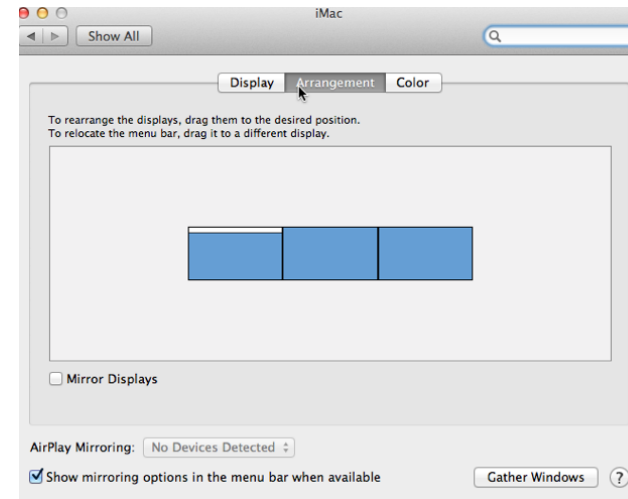


2. Click **Displays** turn enable Multi-Monitor mode and the extended monitor will be shown in the Desktop.

Single Display



Dual Display



NOTE: Check the **Mirror Displays** box to enable Mirror Mode.

Extended Mode

1. In the **Display** drop-down menu, select the preferred monitor.
2. Check the **Multiple Displays > Extend these Displays** on Window® 7/8
3. Click **OK** to confirm and close the settings screen.
4. Once the setting is completed, simply drag and drop the application icons or the opened windows to the add-on monitor. However, some applications may not support to display on the extended desktop.

Cursor Disappeared

If the status remains in the extended mode but the adapter is disconnected, the desktop will still be panned to the add-on monitor. The cursor may not be found on the primary monitor in such a case. If it happens, connect the add-on monitor through the adapter again or keep moving the mouse.

Mirror Mode

1. In the **Display** drop-down menu, select the preferred monitor.
2. Check the **Multiple Displays > Duplicate these Displays** on Window® 7/8
3. Click **OK** to confirm and close the settings screen.


Be the Primary Monitor

1. In the **Display** drop-down menu, select the preferred monitor.
2. Check the **Make this my main display** box on Window® 7, **Set as Main Monitor** on Window® 8

NOTE: Some PCs and laptops may need to disable the main display (i.e. uncheck the **Extend the desktop onto this monitor** or **Extend my Windows desktop onto this monitor** box for the main display) as part of the same settings change.

3. Click **OK** to confirm and close the settings screen.

Windows Shortcut

Press  (Windows button) + **P** to bring up the menu and select a desired option. .
 This function is available for **Windows® 7** and above only.



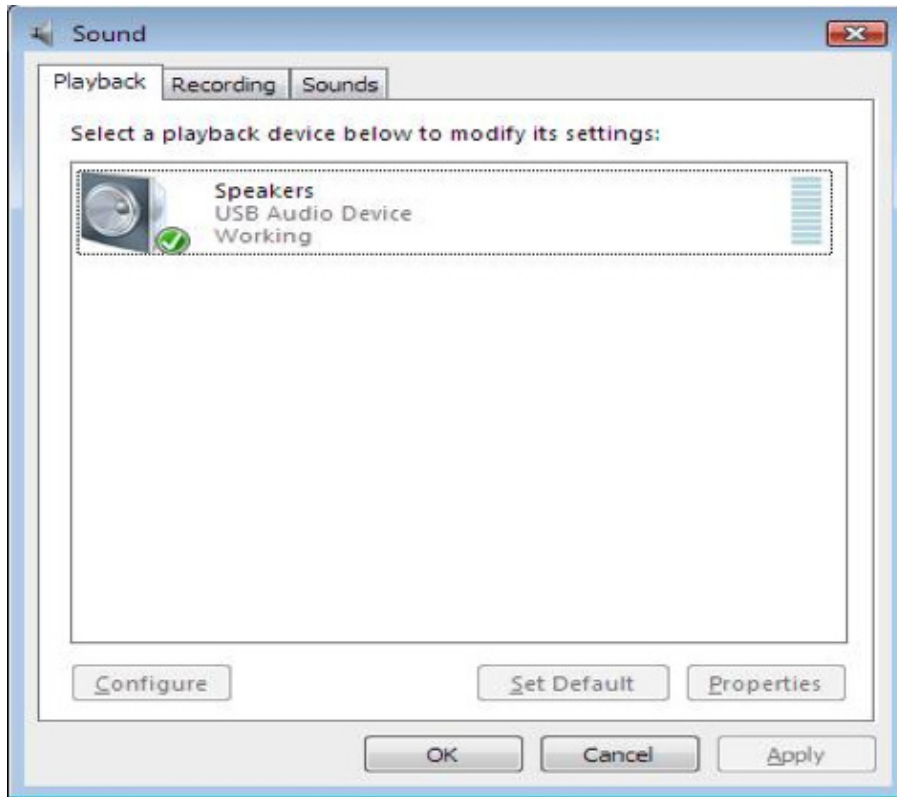
Supported Resolution

Options	Description	Refresh Rate 16 bit	Refresh Rate 32 bit
640 x 480	VGA	60 72 75 78	60 72 75 85
800 x 600	SVGA	56 60 72 75	56 60 72 75 85
1024 x 768	XGA	60 70 75 85	60 70 75 85
1280 x 720	720P	60	60
1280 x 768	WXGA+	60 70 75 85	60 70 75 85
1280 x 800	WXGA	60	60
1280 x 1024	SXGA	60 75 85	60 75
1366 x 768	WXGA+	60	60
1400 x 1050	SXGA+	60 75 85	60 75 85
1600 x 1200	UXGA	60	60
1680 x 1050	WSXGA+	60	60
1920 x 1080	1080p	60	60
1920 x 1200	WUXGA	60	60
2048 X 1152	QXGA	60	60
2560x2048	QSXGA	60	60
3840X2400	WQUXGA	60	60
5120X2880	UHD+	60	60

By default, when the docking station is connected to a computer, the audio configuration may be changed to **USB (Multimedia) Audio Device** automatically (this setting depends on models). If it does not work, follow the steps below to setup.

Windows 7/8

1. Open **Control Panel** and then select the hardware and sound icon.
2. Click **Sound > Manage audio devices** and then select **USB Audio Device** or **Displaylink Audio**



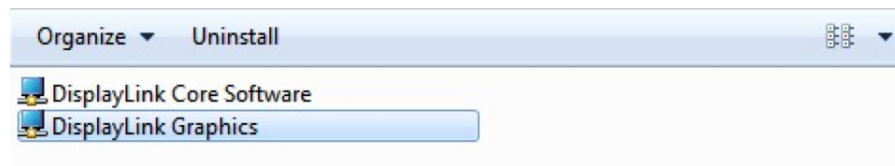
1. Follow the instructions to find the driver path, and then right-click on **DisplayLink Graphics** to uninstall the driver.

Windows 7

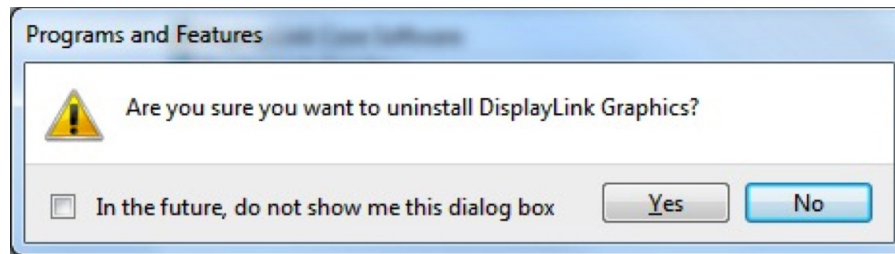
Control Panel > Programs > Programs and Features > Uninstall or change the program

Windows 8

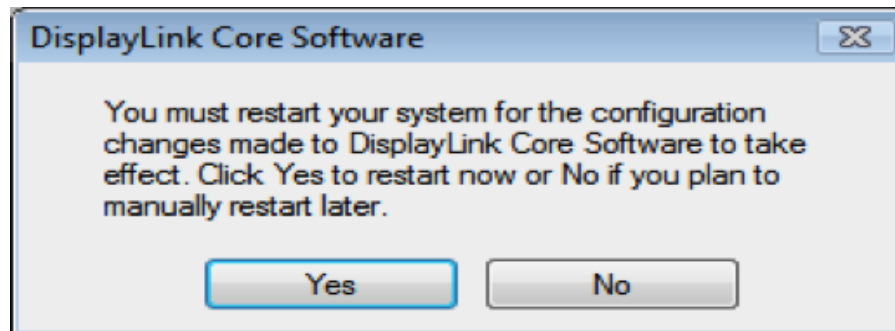
Settings > Control Panel > Programs > Uninstall a program



2. Click **Yes** to confirm the uninstallation.



3. Click **Yes** to restart your computer. You may also disconnect the device now.



Mac OS X

1. Open driver and click **DisplayLink Software Uninstaller**.



7 SPECIFICATIONS

Host Interface	Type C or USB 3.0
Connector	HDMI 30 pin Female Connector
	DisplayPort 20 pin Female Connector
	USB C Connector
	USB A Connector
	3.5mm Stereo Mini-Jack
	RJ45 Connector
	DC Power Jack
Video Resolution	HDMI = 3840x2160
	DisplayPort = 5120x2880
Supported Colors	16 Bits and 32 Bits
Audio	2.1 CH
Ethernet	10/100/1000
Power	Input: AC 100-240V
	Output: DC 5V 4A
Power Consumption	Operating Power: 14.43W
	Suspend Mode Power: 1.95W
Plastic	ABS
Weight	362 g
Dimensions	255(L) x 85(W) x 25(H) mm
Operation Temperature	0~40 Degree
Storage Temperature	-20~70 Degree
Compliance	CE, FCC

Safety Instructions

Always read the safety instructions carefully

- Keep equipment away from humidity
- If any of the following situation arises, get the equipment checked by a service technician:
 - › The equipment has been exposed to moisture.
 - › The equipment has been dropped and damaged.
 - › The equipment has obvious sign of breakage.
 - › The equipment has not been working well or cannot get it to work according to the User's Manual.
 - › Use only with provided adapter.

Copyright

This document contains proprietary information protected by copyright. All right are reserved. No part of this manual may be reproduced by any mechanical, electronic or other means, in any form, without prior written permission of the manufacturer.

Trademarks

All trademarks and registered trademarks are the property of their respective owners or companies.

FCC Conditions

This equipment has been tested and found to comply with Part 15 Class B of the FCC Rules. Operation is subject to the following two conditions: (1) This device may not cause harmful interference. (2) This device must accept any interference received and include interference that may cause undesired operation.

CE

This equipment is in compliance with the requirements of the following regulations: EN 55 022: CLASS B

WEEE Information

For EU (European Union) member users: According to the WEEE (Waste electrical and electronic equipment) Directive, do not dispose of this product as household waste or commercial waste. Waste electrical and electronic equipment should be appropriately collected and recycled as required by practices established for your country. For information on recycling of this product, please contact your local authorities, your household waste disposal service or the shop where you purchased the product.

