

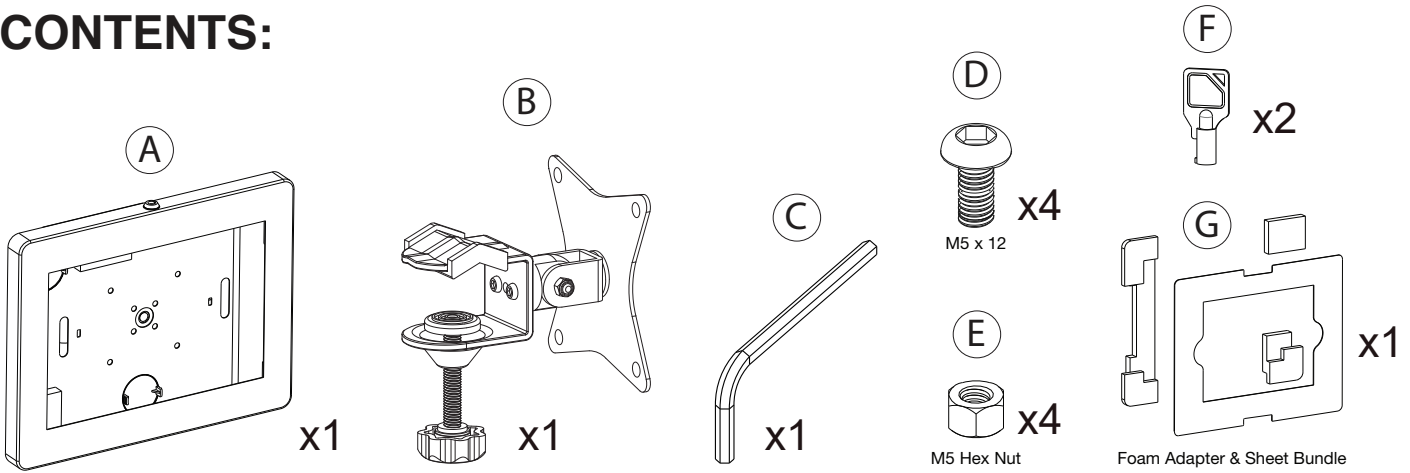


Premium Locking Shelf Mount

PAD-PARAS

INSTALLATION - MANUAL

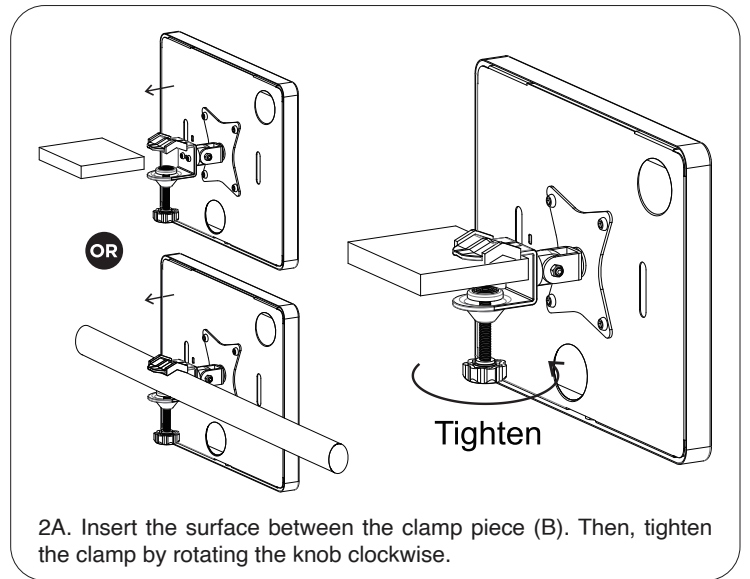
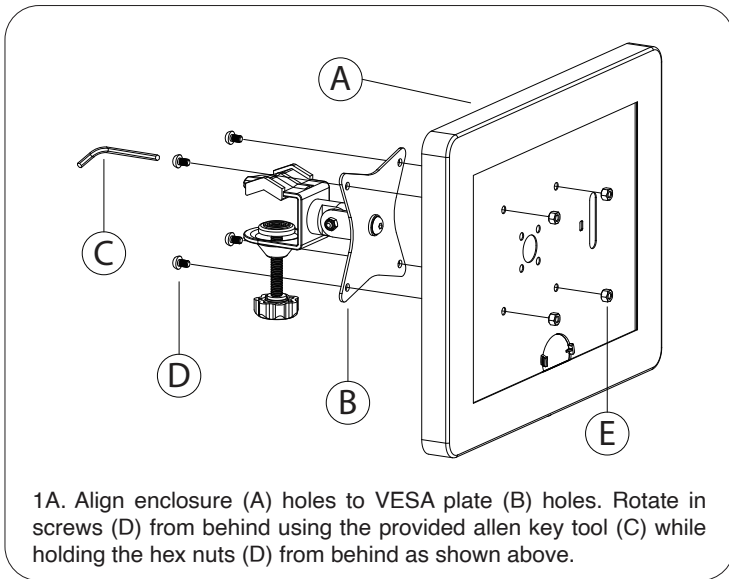
CONTENTS:



INSTALLATION:

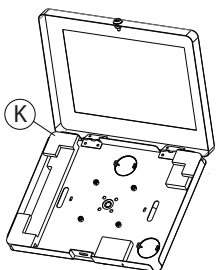
1. Attaching Enclosure to VESA Plate

2. Installing Clamp Mount to Surface or Pole

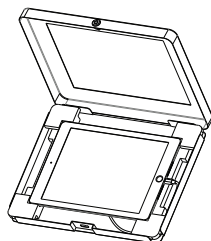


Setting Up Device & Enclosure

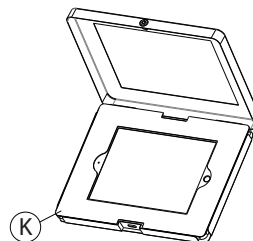
***Tablet shown for illustration and NOT INCLUDED.*



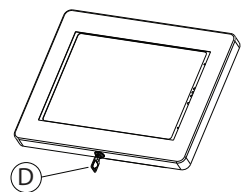
Insert the appropriate foam piece (K) that is compatible with your tablet.



Insert tablet as shown. Plug in power cable to tablet and cable route through the back.



Place the appropriate provided tablet cover (K) to match your tablet.



Close the enclosure and lock it with the included set of keys (D).