

≡ NEXT LEVEL RACING ≡

*electronics not included



F-GT LITE



MANUAL

THANK YOU FOR PURCHASING THE NEXT LEVEL RACING F-GT LITE
If you require any support with your product please contact our friendly team at:
support@nextlevelracng.com

BE FAST OR BE LAST!

**HOWEVER, TAKE YOUR
TIME WITH THESE INSTRUCTIONS TO
GET THE MOST OUT YOUR F-GT LITE.**



CRITICAL (WATCH VIDEO INSTRUCTIONS)
bit.ly/nlrbuild

WARNING



- Please do not use power tools for assembly as over tightening can damage your frame.
- Do not adjust the hubs while user is sitting in cockpit. Make sure user is out of the cockpit before adjusting.
- Make sure the hubs are tightened fully before using the cockpit. (spin the hub clockwise to ensure it is fully tight)
- Make sure strap on wheel bar is tight when adjusting the hubs otherwise the wheel will fall.



WARNING

CHOKING HAZARD - Small parts not for children under 3 years or any individuals who have a tendency to place inedible objects into their mouths

If you require any support with your product please contact our friendly team at:

support@nextlevelracing.com for a prompt response.

URL: bit.ly/nlrbuild

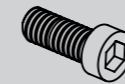


**CRITICAL
ASSEMBLY
VIDEO**



IN THE BOX

FOR HARDMOUNT WHEEL & PEDALS



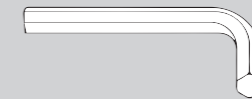
8 X M6 15MM



8 X M6 WASHERS



4 X M6 NUTS



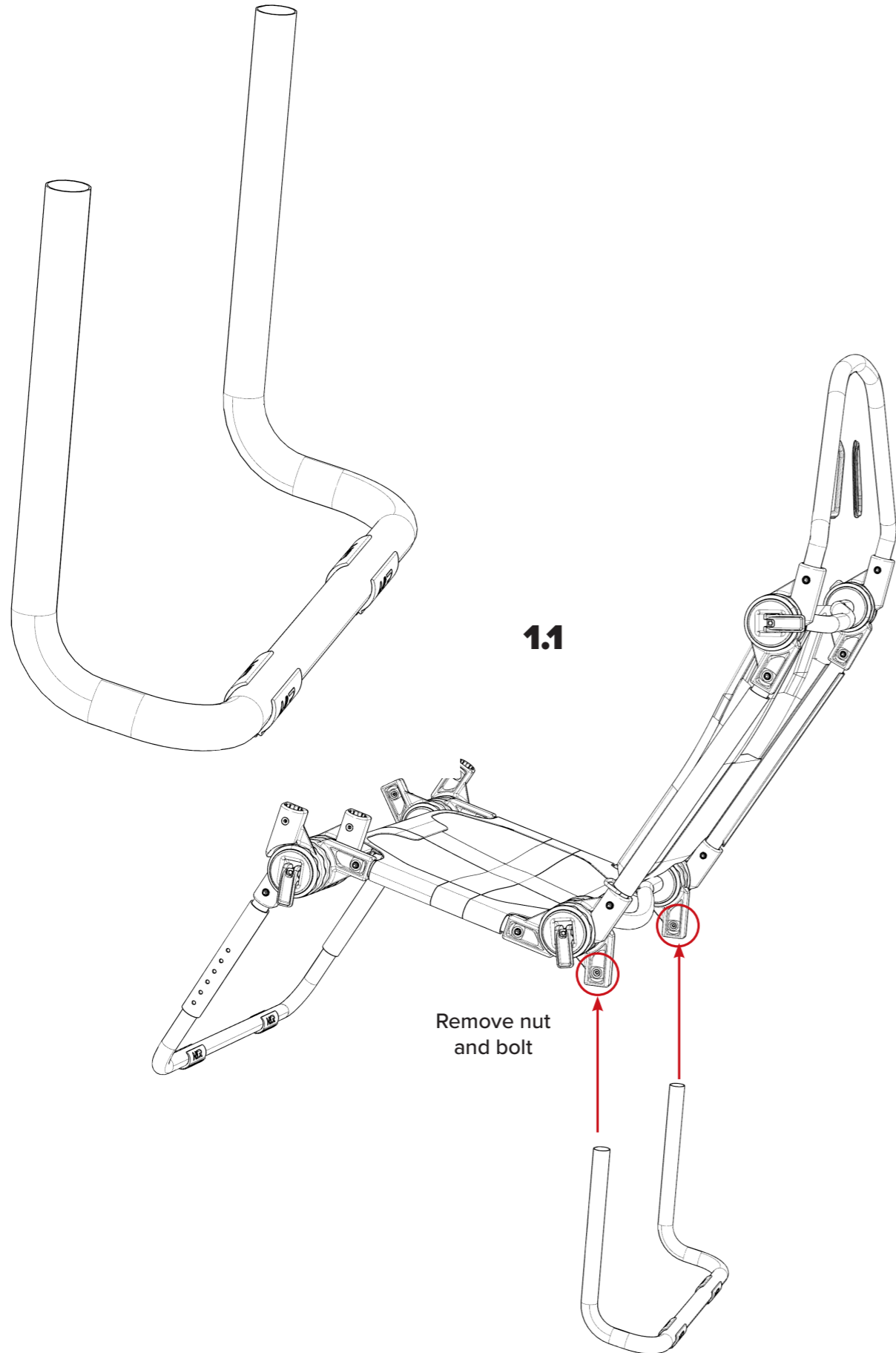
1 x ALLEN KEY
WITH PHILLIPS HEAD



1 X WRENCH



1.0

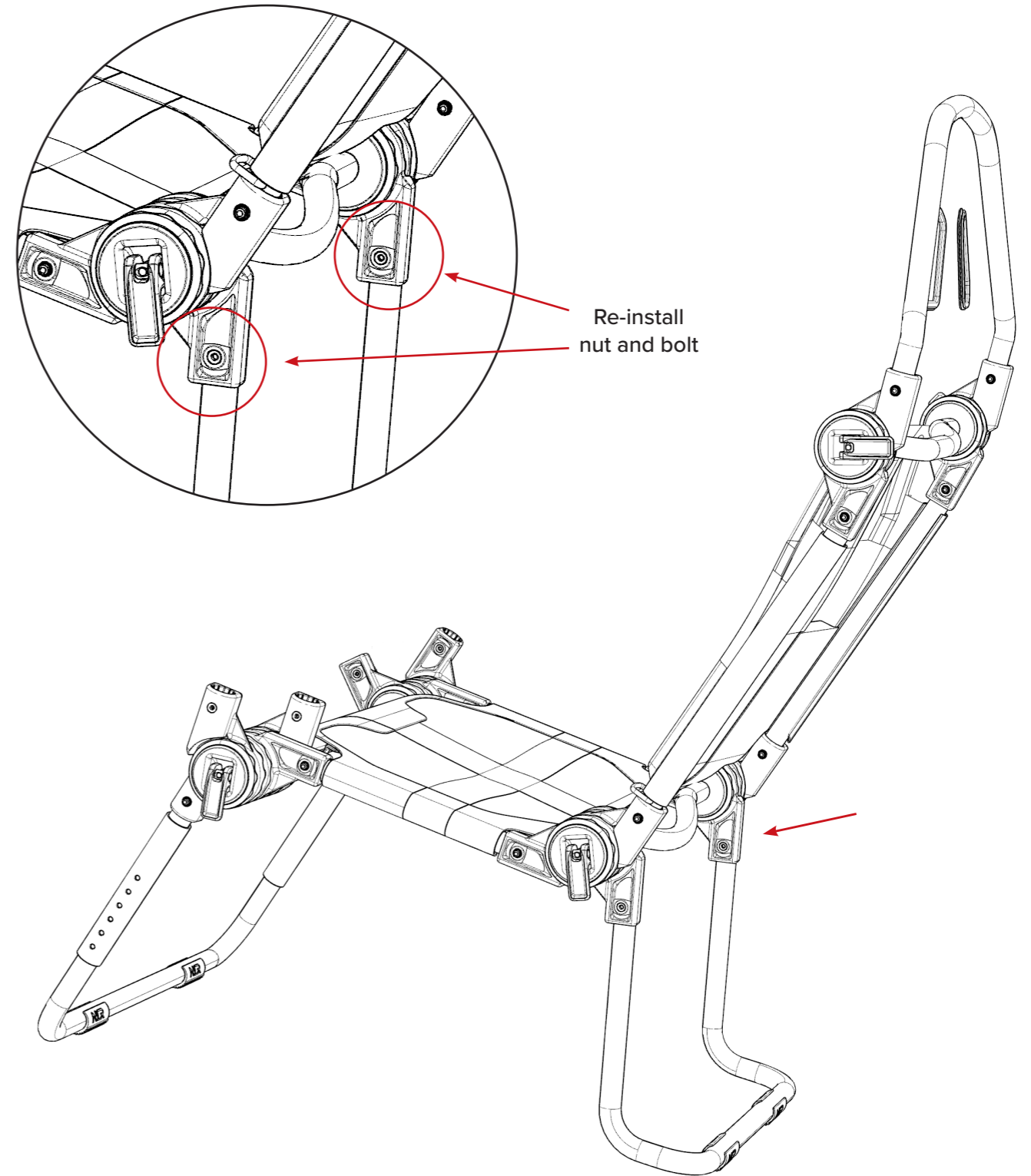


1.2

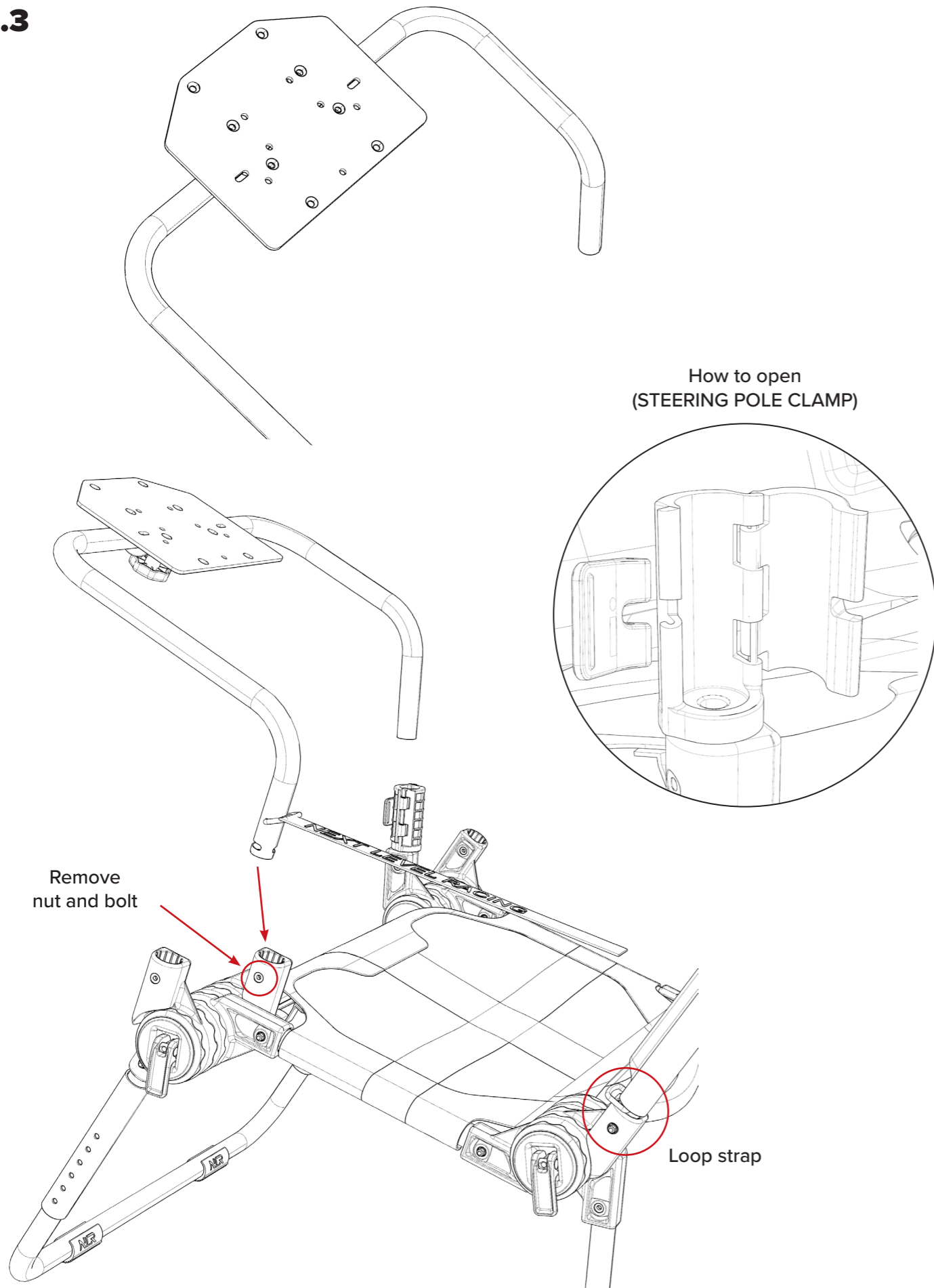
URL: bit.ly/nlrbuild



CRITICAL ASSEMBLY VIDEO



1.3



1.4

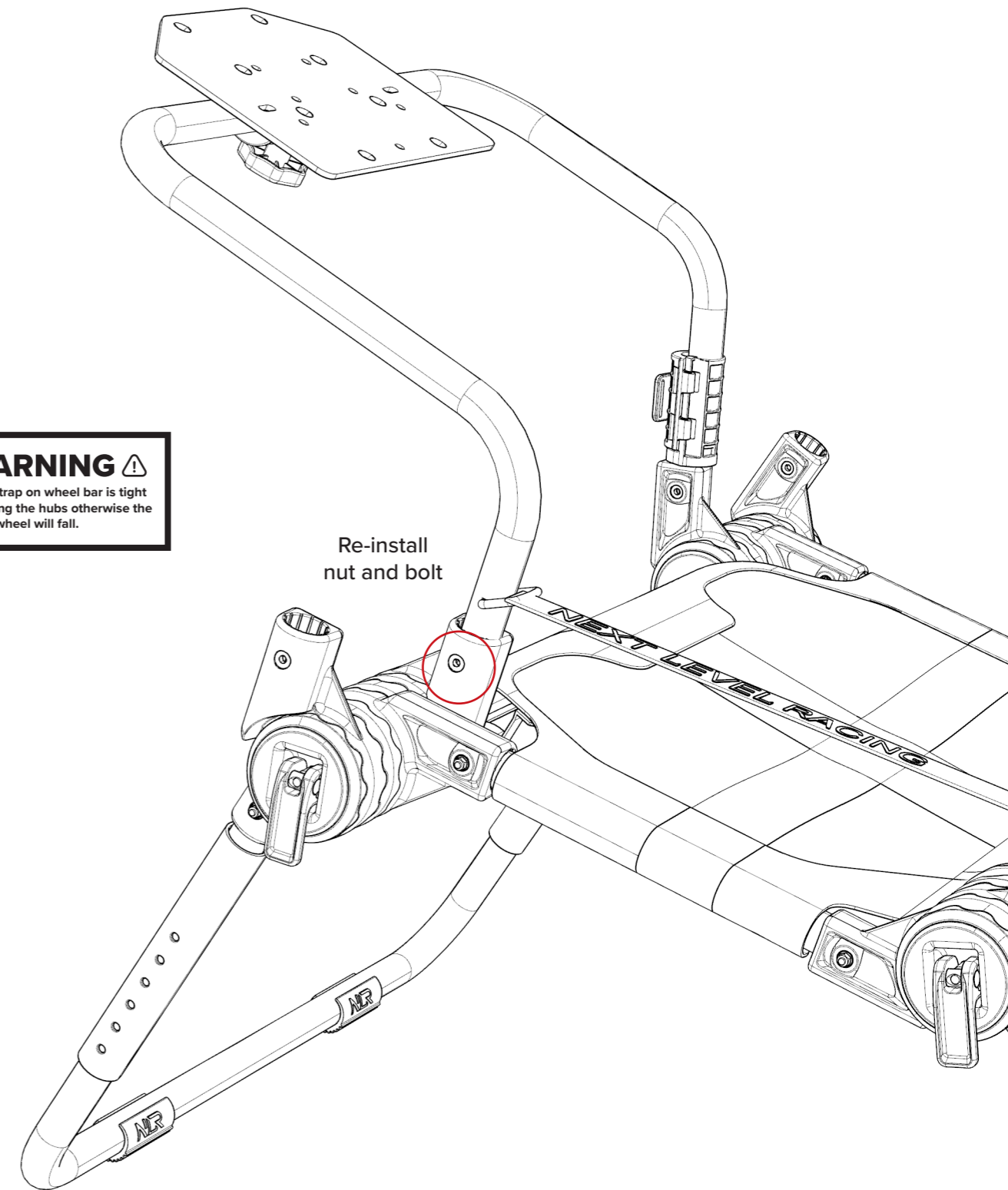
URL: bit.ly/nlrbuild



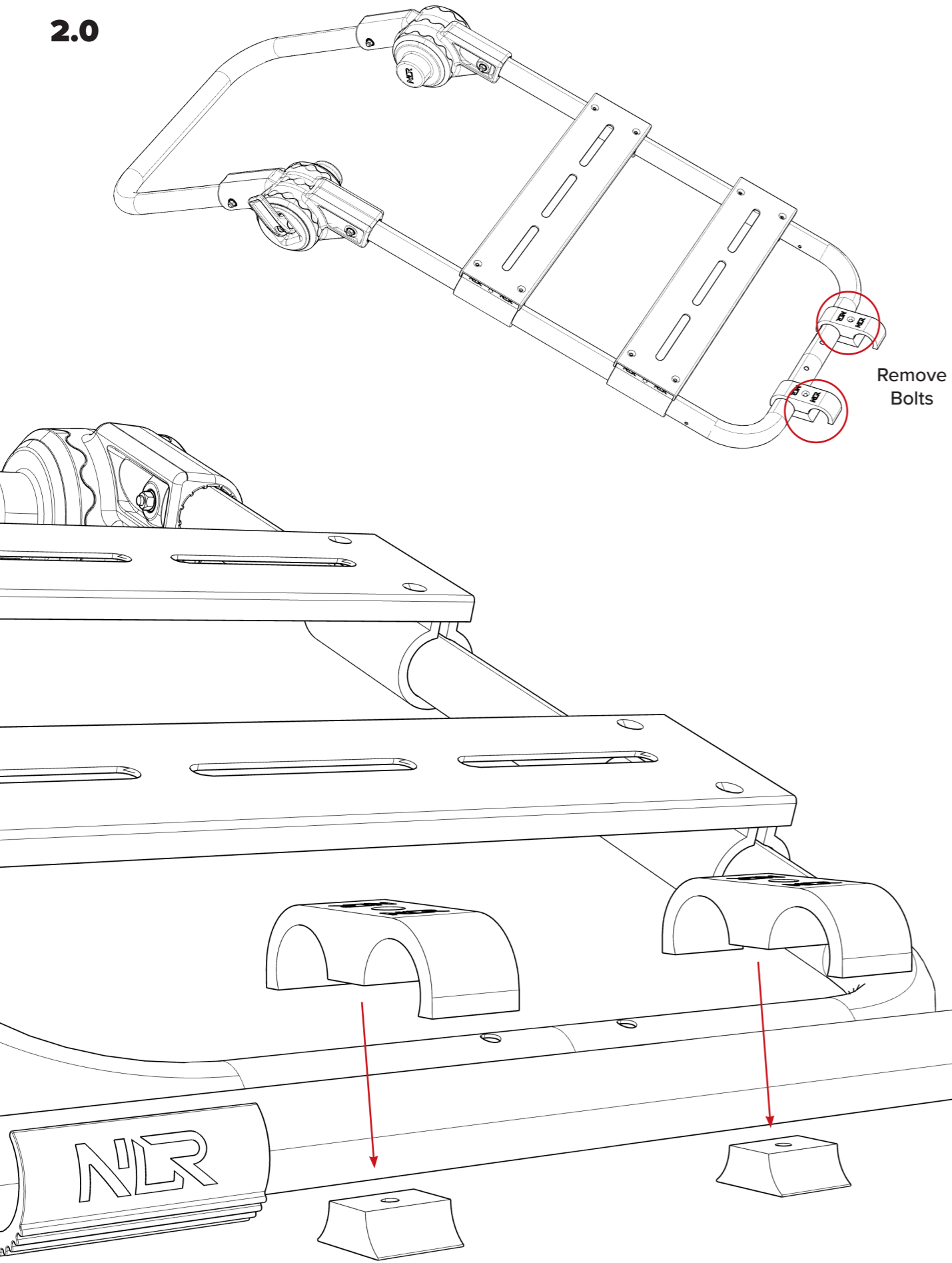
CRITICAL
ASSEMBLY
VIDEO



⚠ WARNING ⚠
 Make sure strap on wheel bar is tight
 when adjusting the hubs otherwise the
 wheel will fall.



2.0

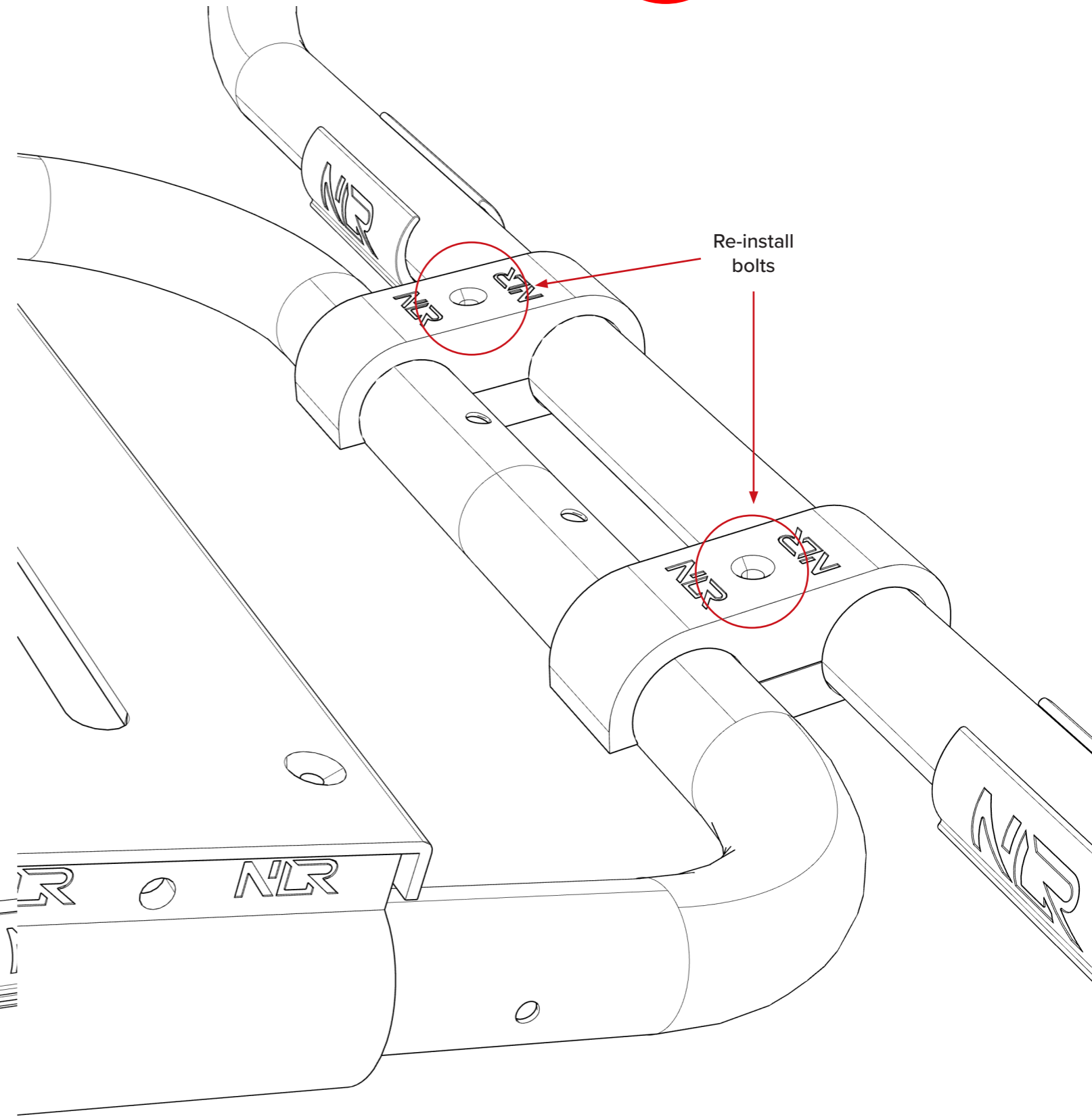


2.1

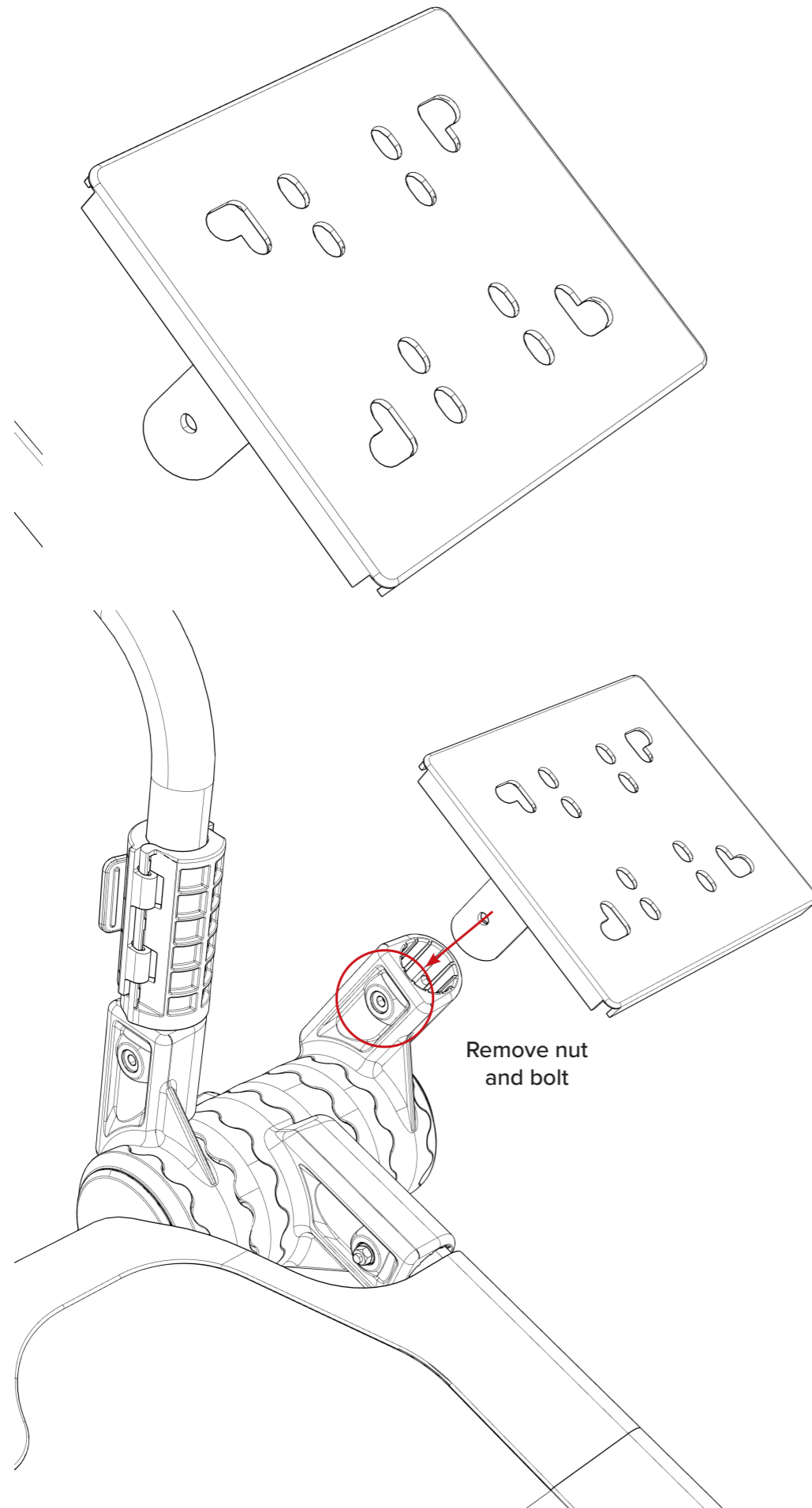
URL: bit.ly/nlrbuild



CRITICAL ASSEMBLY VIDEO



3.0

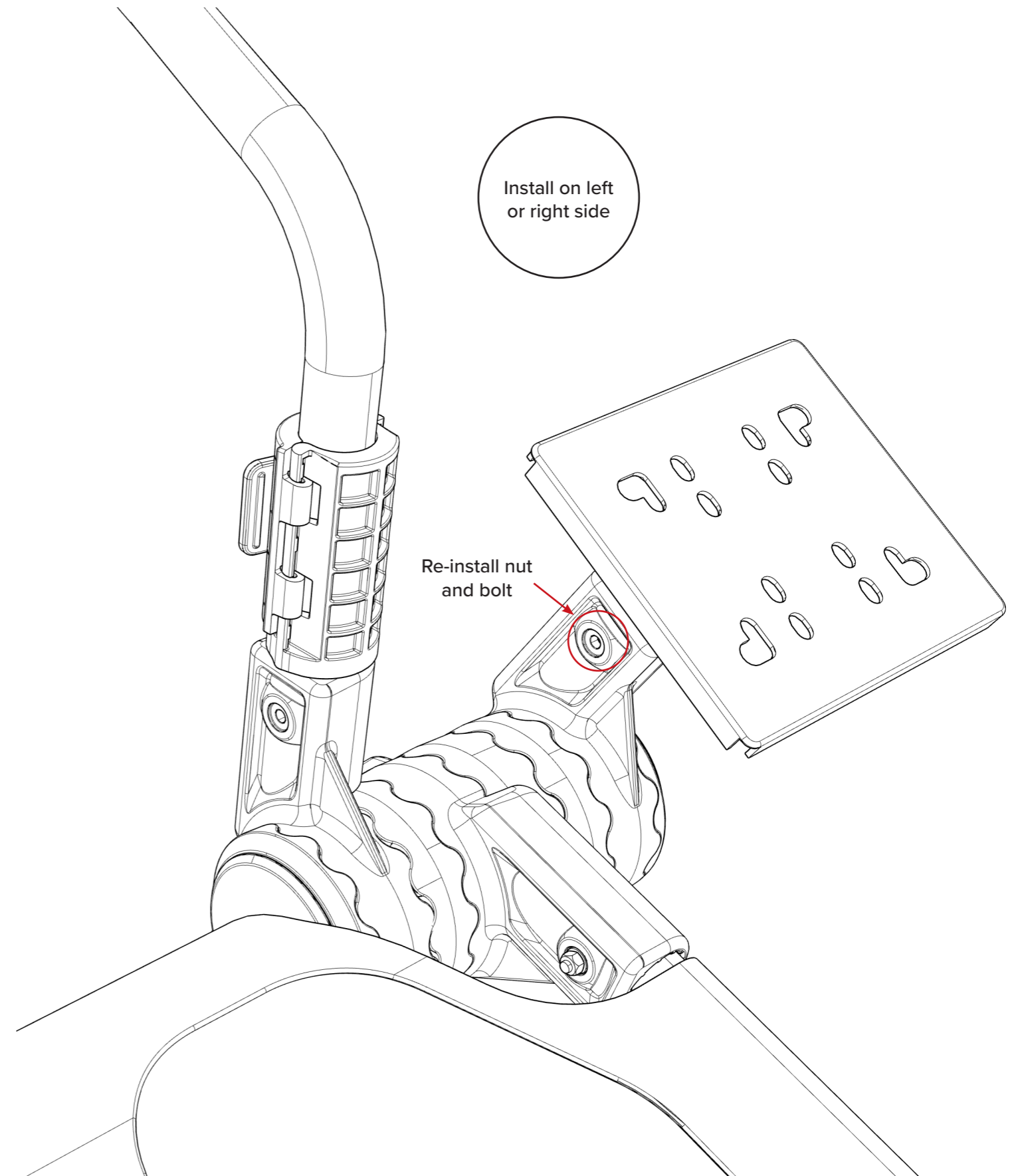


3.1

URL: bit.ly/nlrbuild



CRITICAL ASSEMBLY VIDEO

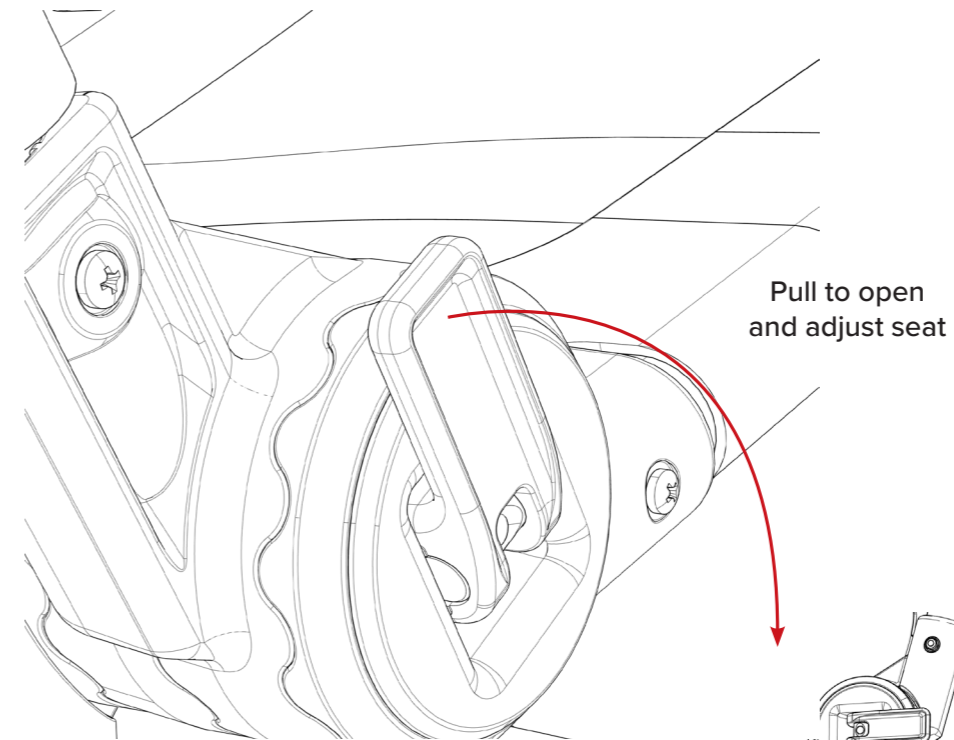
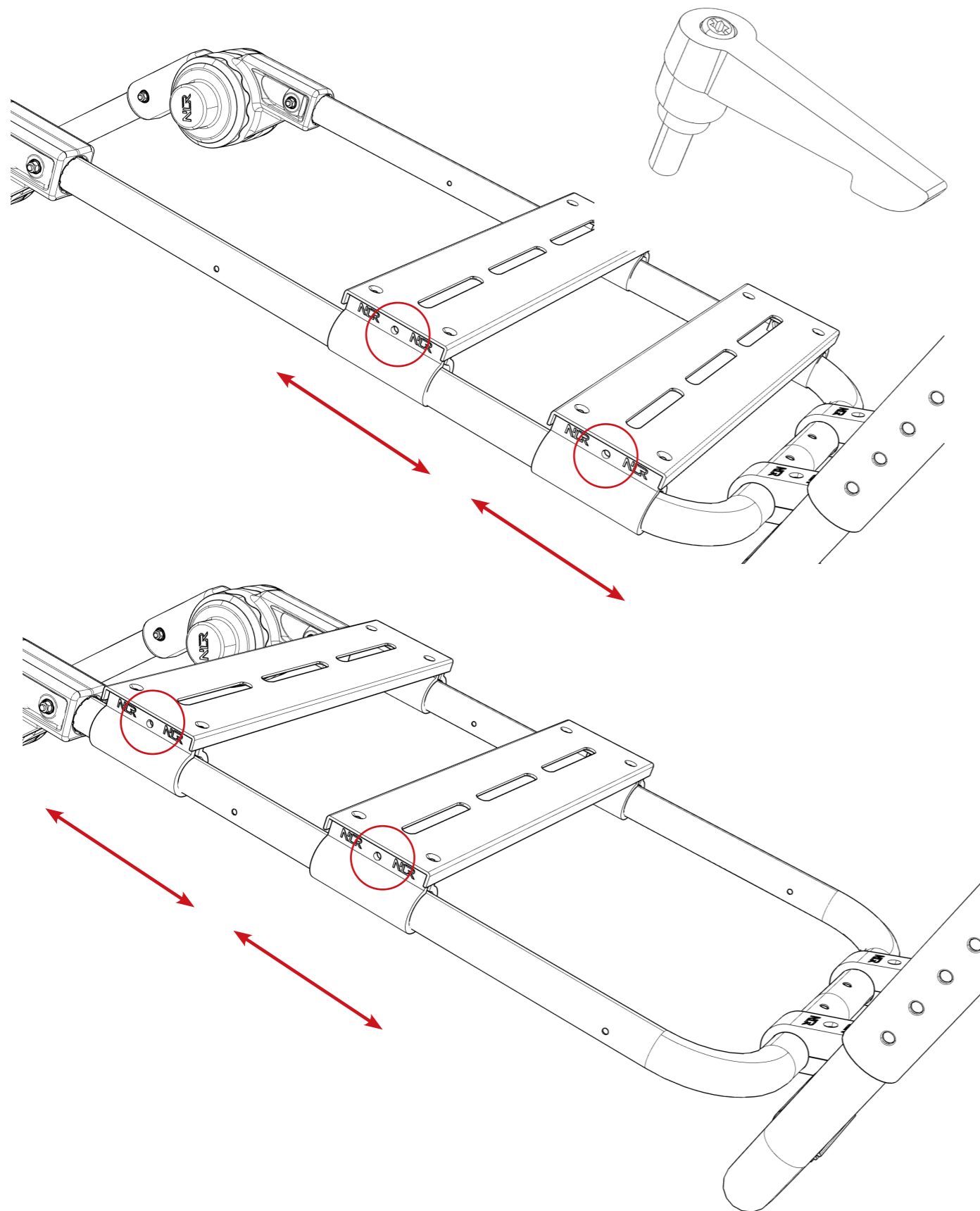


ADJUSTMENTS

URL: bit.ly/nlrbuild



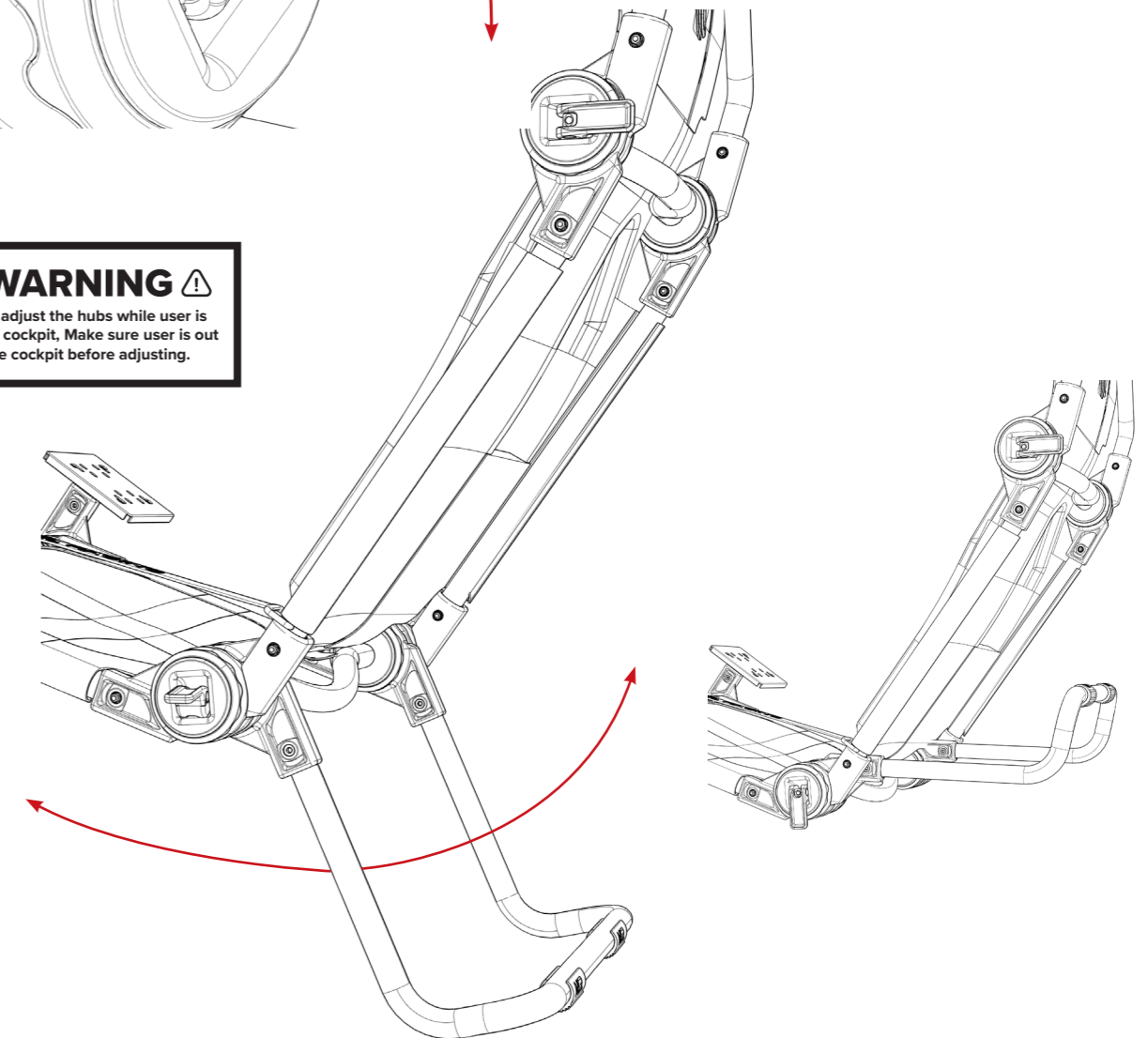
CRITICAL ASSEMBLY VIDEO

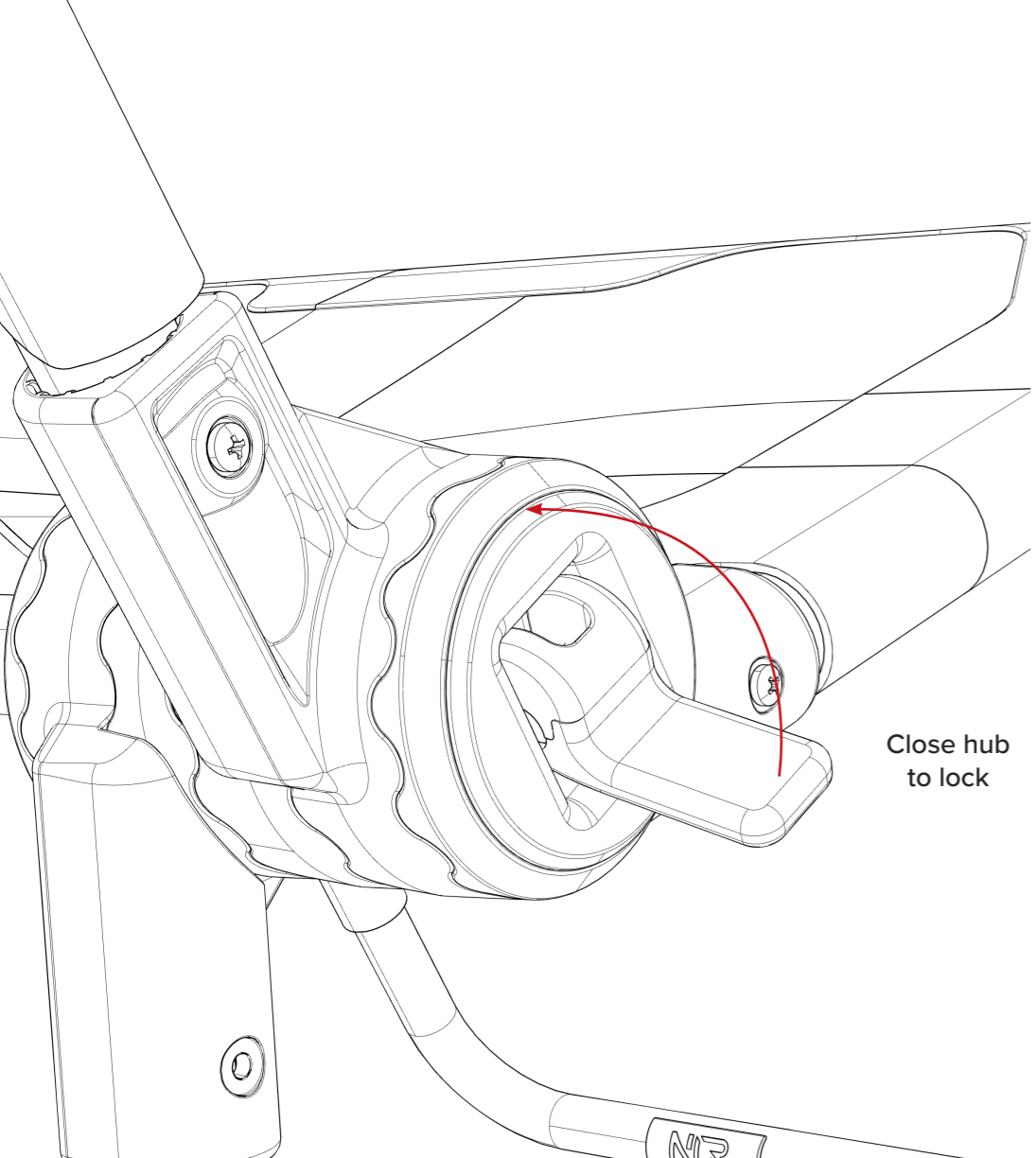


Pull to open and adjust seat

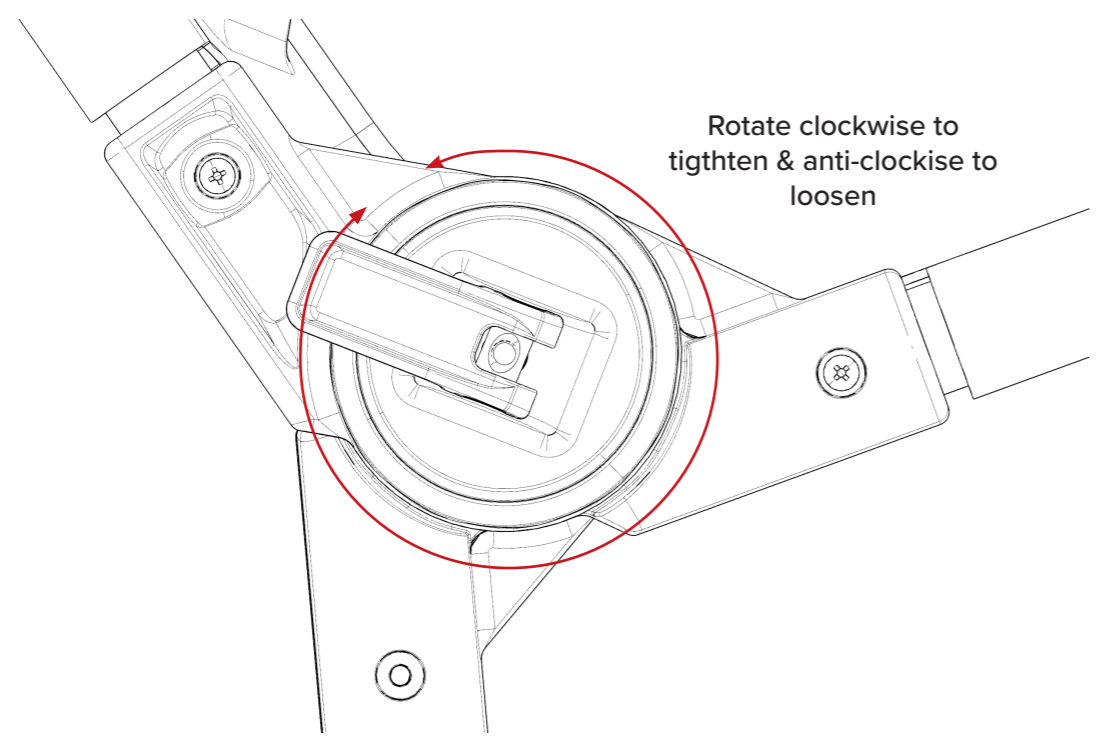
⚠ WARNING ⚠
 Make sure the hubs are tightened fully before using the cockpit. (spin the hub clockwise to ensure it is fully tight)

⚠ WARNING ⚠
 Do not adjust the hubs while user is sitting in cockpit. Make sure user is out of the cockpit before adjusting.





Close hub to lock

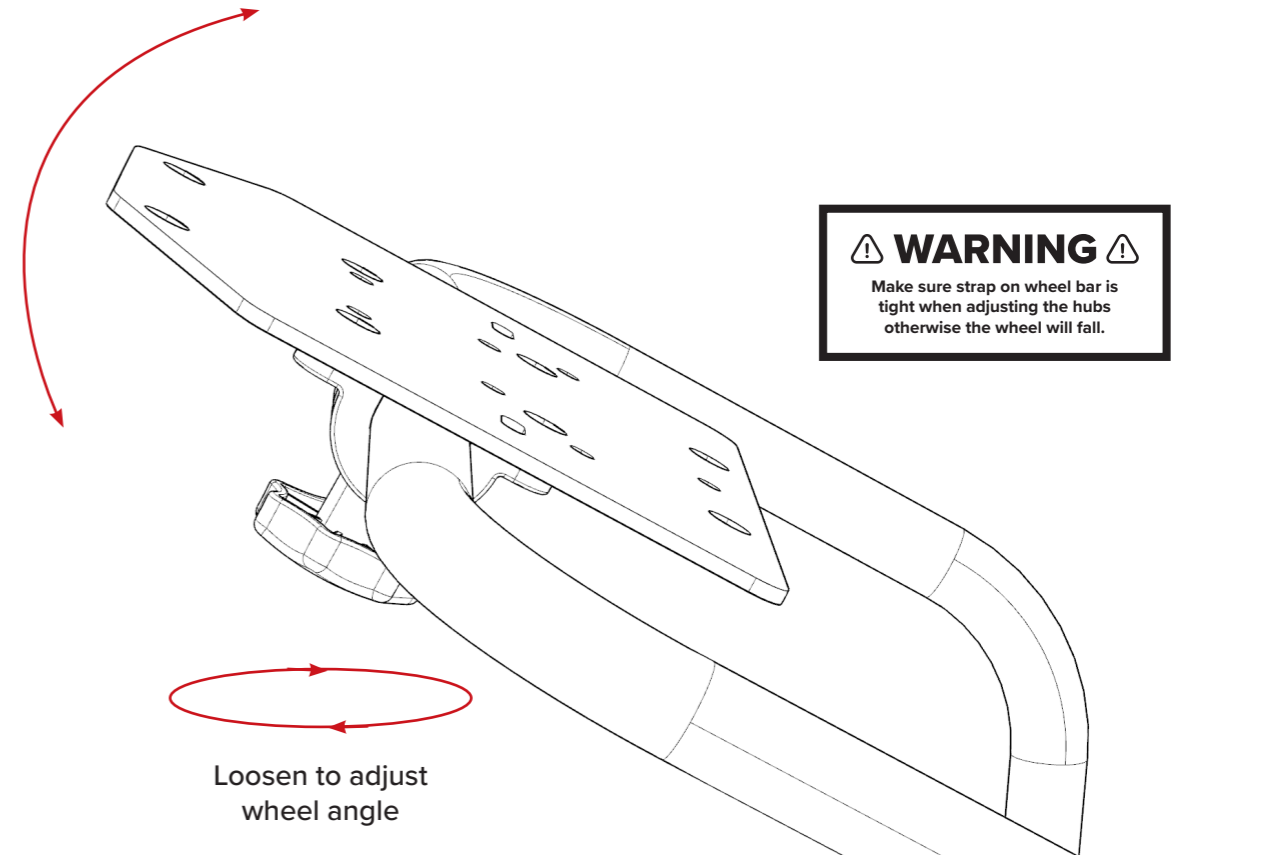


Rotate clockwise to tighten & anti-clockwise to loosen

URL: bit.ly/nlrbuild



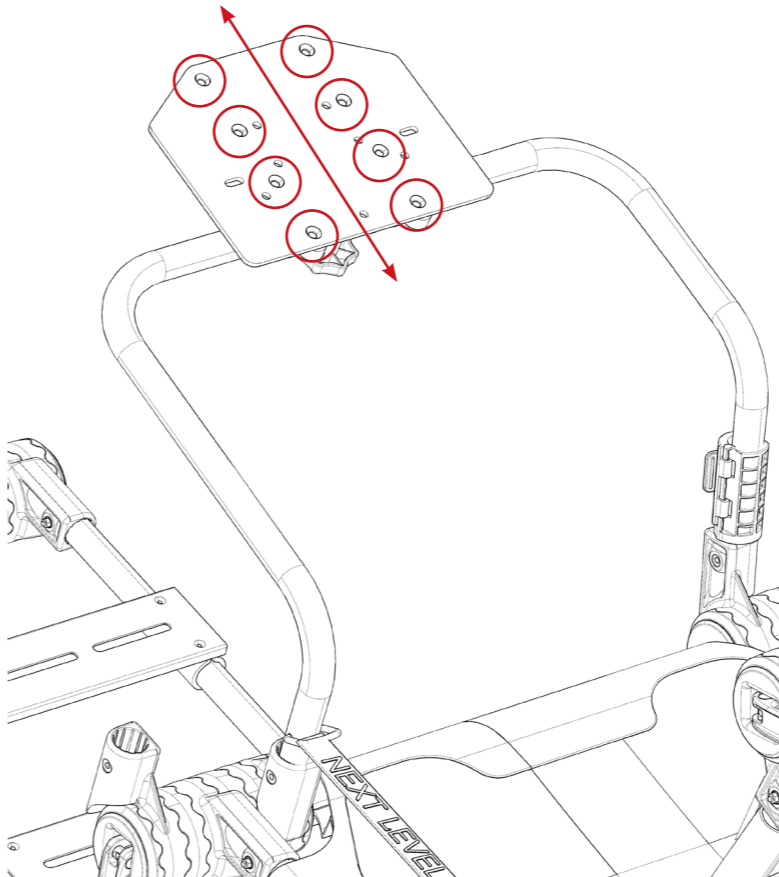
CRITICAL ASSEMBLY VIDEO



Loosen to adjust wheel angle

⚠ WARNING ⚠
Make sure strap on wheel bar is tight when adjusting the hubs otherwise the wheel will fall.

Wheel plate adjustment



WARNING



- Please do not use power tools for assembly as over tightening can damage your frame.
- Do not adjust the hubs while user is sitting in cockpit. Make sure user is out of the cockpit before adjusting.
- Make sure the hubs are tightened fully before using the cockpit. (spin the hub clockwise to ensure it is fully tight)
- Make sure strap on wheel bar is tight when adjusting the hubs otherwise the wheel will fall.



NOTES



WARNING

CHOKING HAZARD - Small parts not for children under 3 years or any individuals who have a tendency to place inedible objects into their mouths

If you require any support with your product please contact our friendly team at:

support@nextlevelracing.com for a prompt response.

NOTES

URL: bit.ly/nlrbuild



**CRITICAL
ASSEMBLY
VIDEO**



NEED ASSISTANCE?

ASSEMBLY VIDEO



If you require any support with your product please contact our friendly team at:

support@nextlevelracing.com for a prompt response.



F-GT LITE

