

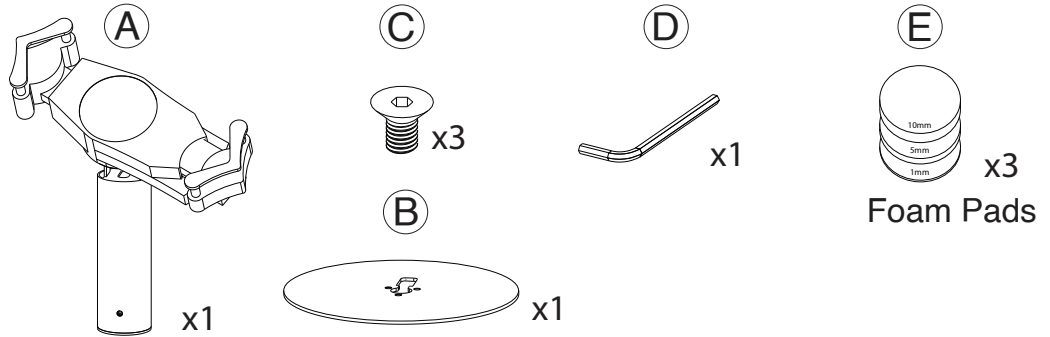


Gooseneck Chair Clamp

PAD-UGT / PAD-UGTW

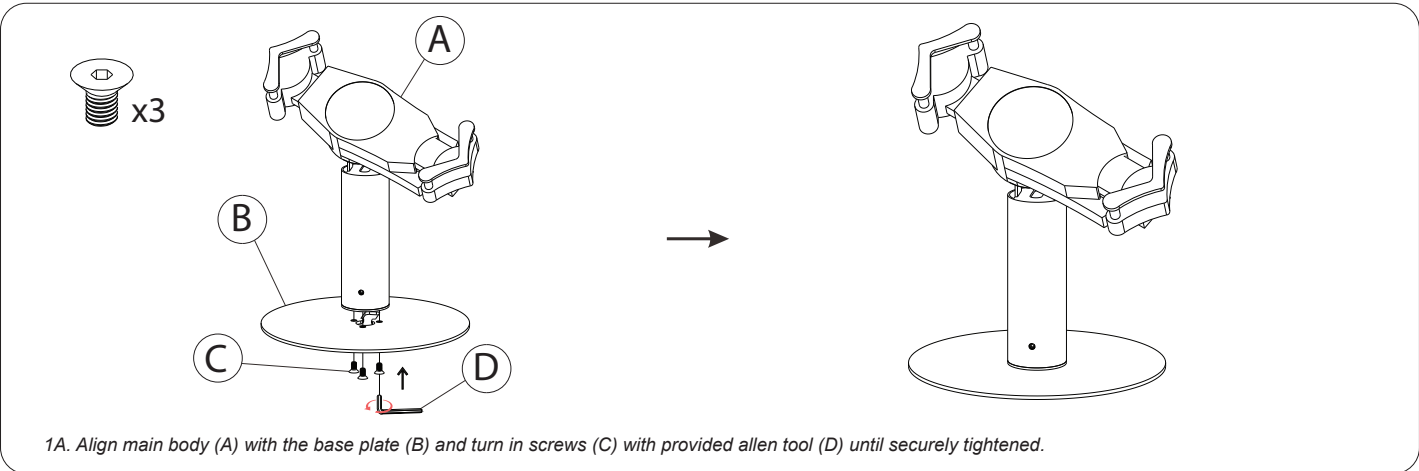
INSTRUCTION - MANUAL

CONTENTS:



INSTALLATION:

1. Connecting base to main body :



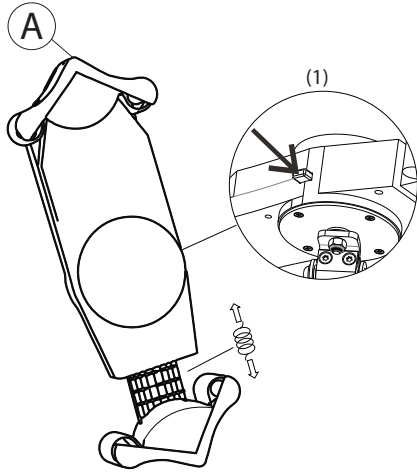
2. Attaching Foam Pad to Tablet Holder

Foam Pad Thickness:	Tablet Thickness:
1mm	0.67-1.06in / 17-27mm
5mm	0.51- 0.91in / 13-23mm
10mm	0.31- 0.71in / 8-18mm

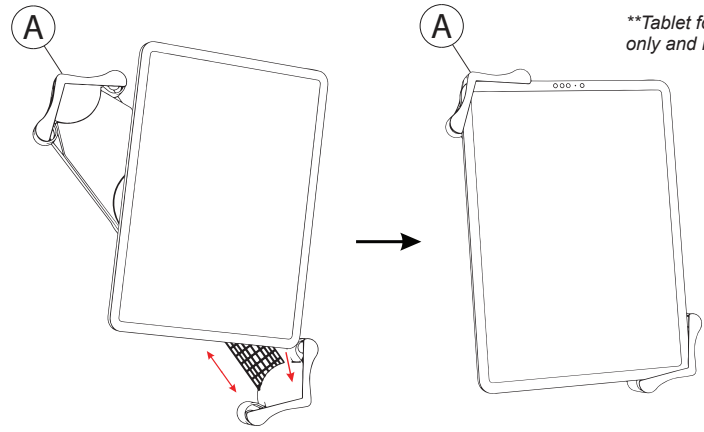
- Use this table to determine the appropriate foam pad (B) to use with your tablet.
Note: sizes refer to total tablet size with or without a case

2A. Select the appropriate foam pad (E) according to the thickness of your tablet (or tablet in its case), then press adhesive side into center of the tablet holder. As shown above.

3. Inserting Tablet to Holder



4A. Press quick release button (1) on side of tablet holder (A) to release the adjustable end.

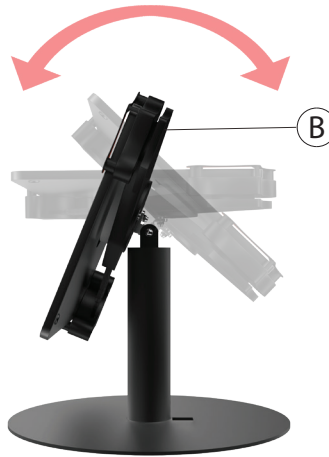


4B. Insert tablet corner against the spring arm. Push adjustable arm down against opposite corner (A). Be sure it is as snug as possible.

4. Adjustable angles :

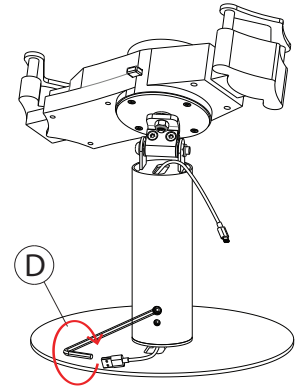


4A. For landscape or portrait setups, rotate the holder (B) as shown above.



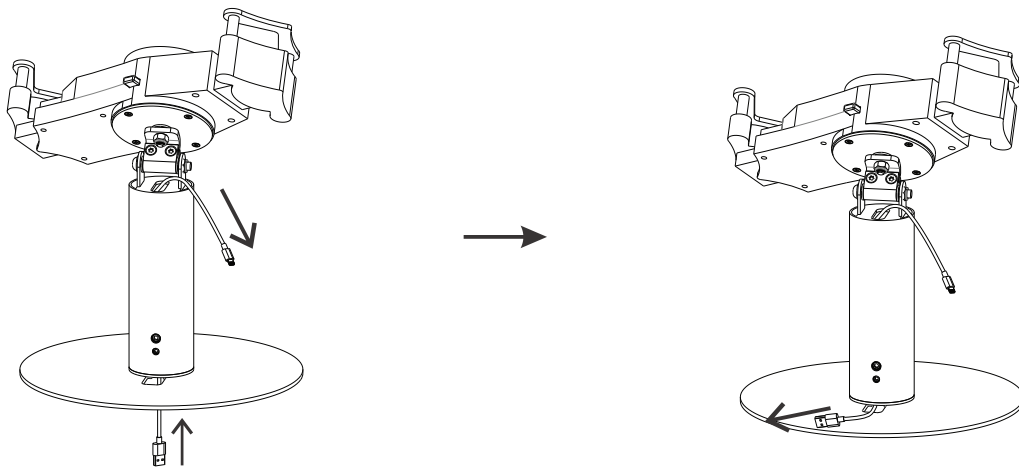
4B. For forward or backwards setups, tilt the holder (B) as shown above.

**Tablet shown for example and NOT INCLUDED



4C. Locate screw on the back of pole then turn clock-wise to prevent rotation.

5. Cable management :



5A. Identify the hole at the bottom to where cable routing should go and then fish the cord through the base out the top to properly tuck away cord as shown above.