

**Lenovo**

**ThinkVision**

**M14t Flat Panel Monitor**

**User's Guide**

**Machine Type: 62A3**

**Think**

---

## Product numbers

ThinkVision M14t  
62A3-UAR1-WW  
A20140FX0

First Edition (Mar 2020)

© Copyright Lenovo 2020.

LENOVO products, data, computer software, and services have been developed exclusively at private expense and are sold to governmental entities as commercial items as defined by 48 C.F.R. 2.101 with limited and restricted rights to use, reproduction and disclosure.

LIMITED AND RESTRICTED RIGHTS NOTICE: If products, data, computer software, or services are delivered pursuant a General Services Administration "GSA" contract, use, reproduction, or disclosure is subject to restrictions set forth in Contract No. GS-35F-05925.

---

## Contents

<b>Safety information</b> .....	<b>iv</b>
General Safety guidelines .....	iv
<b>Safety and Maintenance Guidelines</b> .....	<b>v</b>
Important Safety Information.....	v
<b>Chapter 1. Getting started</b> .....	<b>1-1</b>
Shipping contents .....	1-1
Product overview.....	1-2
Setting up your monitor .....	1-5
Registering your option .....	1-8
<b>Chapter 2. Adjusting and using your monitor</b> .....	<b>2-1</b>
Comfort and accessibility .....	2-1
Arranging your work area .....	2-1
Positioning and viewing your monitor .....	2-1
Quick tips for healthy work habits .....	2-2
Eye Strain .....	2-2
Low Blue Light .....	2-3
Interact with your monitor .....	2-4
Touch Screen .....	2-6
Lenovo Digital Pen .....	2-10
Touch setting when multi monitors connecting .....	2-12
Adjusting your monitor image.....	2-13
Selecting a supported display mode .....	2-16
Understanding power management.....	2-17
Caring for your monitor .....	2-19

---

Wall Mounting (Optional) .....	2-19
<b>Chapter 3.Reference information.....</b>	<b>3-1</b>
Monitor specifications.....	3-1
Troubleshooting.....	3-3
Manually installing the monitor driver.....	3-5
Service information .....	3-7
<b>Appendix A. Service and Support.....</b>	<b>A-1</b>
Registering your option .....	A-1
Online technical support.....	A-1
Telephone technical support .....	A-1
<b>Appendix B.Notices.....</b>	<b>B-1</b>
Recycling information .....	B-2
Trademarks.....	B-2
Turkish statement of compliance .....	B-3
Ukraine RoHS.....	B-3
India RoHS.....	B-3
Power cords and power adapters .....	B-3

---

# Safety information

---

## General Safety guidelines

For tips to help you use your computer safely, go to:  
<http://www.lenovo.com/safety>

Before installing this product, read the Safety Information.

Avant d'installer ce produit, lisez les consignes de sécurité.

Vor der Installation dieses Produkts die Sicherheitshinweise lesen.

Πριν εγκαταστήσετε το προϊόν αυτό, διαβάστε τις πληροφορίες ασφάλειας (safety information).

לפני שתתקינו מוצר זה, קראו את הוראות הבטיחות.

A termék telepítése előtt olvassa el a Biztonsági előírásokat!

Prima di installare questo prodotto, leggere le Informazioni sulla Sicurezza

Antes de instalar este produto, leia as Informações de Segurança.

Läs säkerhetsinformationen innan du installerar den här produkten.

Prije instalacije ovog produkta obavezno pročitajte Sigurnosne Upute.

Les sikkerhetsinformasjonen (Safety Information) før du installerer dette produktet.

Przed zainstalowaniem tego produktu, należy zapoznać się z książką "Informacje dotyczące bezpieczeństwa" (Safety Information).

Пред да се инсталира овој продукт, прочитајте информацијата за безбедност.

Pred inštaláciou tohto zariadenia si pečítajte Bezpečnostné predpisy.

Pred namestitvijo tega proizvoda preberite Varnostne informacije.

Ennen kuin asennat tämän tuotteen, lue turvaohjeet kohdasta Safety Information.

Před instalací tohoto produktu si přečtěte Bezpečnostní informace.

在安装本产品之前，请仔细阅读 Safety Information (安全信息)。

安裝本產品之前，請先閱讀「安全資訊」。

مج، يجب قراءة دات السلامة

Læs sikkerhedsforskrifterne, før du installerer dette produkt.

製品の設置の前に、安全情報をお読みください。

본 제품을 설치하기 전에 안전 정보를 읽으십시오.

Antes de instalar este producto lea la información de seguridad.

Antes de instalar este produto, leia as Informações de Segurança.

Перед установкой продукта прочтите инструкции по технике безопасности.

Lees voordat u dit product installeert eerst de veiligheidsvoorschriften.

Suitable for entertainment purposes at specially controlled luminous indoor environments, to avoid disturbing reflections from the screen.

---

# Safety and Maintenance Guidelines

---

## Important Safety Information

The power cord is designed for use with your monitor. To use a different cord, use only a power source and connection compatible with this monitor.



**WARNING:** Always connect your monitor, the computer, and other equipment to a grounded (earthed) power outlet. To reduce the risk of electric shock or damage to your equipment, do not disable the power cord grounding feature. The grounding plug is an important safety feature.



**WARNING:** For your safety, be sure that the grounded power outlet you plug the power cord into is easily accessible to the operator and located as close to the equipment as possible. To disconnect power from the equipment, unplug the power cord from the power outlet by grasping the plug firmly. Never pull on the cord.



**CAUTION:** To protect your monitor, as well as your computer, connect all power cords for your computer and its peripheral devices (such as a monitor, printer, or scanner) to a surge protection device such as a power strip with surge protection or uninterruptible power supply (UPS). Not all power strips provide surge protection; the power strips must be specifically labelled as having this ability. Use a power strip whose manufacturer offers a damage replacement policy, so you can replace your equipment if surge protection fails.



**CAUTION:** A certified power supply cord has to be used with this equipment. The relevant national installation and/or equipment regulations shall be considered. A certified power supply cord not lighter than ordinary polyvinyl chloride flexible cord according to IEC 60227 (designation H05VV-F 3G 0.75mm<sup>2</sup> or H05VVH2-F2 3G 0.75mm<sup>2</sup>) shall be used. An alternative flexible cord is synthetic rubber.

## Safety Precautions

- Use only a power source and connection compatible with this monitor, as indicated on the label/back plate of the monitor.
- Be sure the total ampere rating of the products connected to the outlet does not exceed the current rating of the electrical outlet, and the total ampere rating of the products connected to the power cord does not exceed the rating of the power cord. Look on the power label to determine the ampere rating (Amps or A) for each device.
- Install your monitor near a power outlet that you can easily reach. Disconnect the monitor by grasping the plug firmly and pulling it from the outlet. Never disconnect the monitor by pulling the cord.
- Do not allow anything to rest on the power cord. Do not walk on the cord.
- While using VESA mount application, the AC Inlet must face to down side. Do not face any other position.

## Maintenance Guidelines

- To enhance the performance and extend the life of your monitor:
- Do not open your monitor cabinet or attempt to service this product yourself. If your monitor is not operating properly or has been dropped or damaged, contact your Lenovo authorized dealer, reseller, or service provider.
- Adjust only those controls that are described in the operating instructions.
- Turn your monitor off when not in use. You can substantially increase the life expectancy of the monitor by using a screen saver program and turning off the monitor when not in use.
- Keep your monitor in a well-ventilated area, away from excessive light, heat, or moisture.
- Slots and openings in the cabinet are provided for ventilation. These openings must not be blocked or covered. Never push objects of any kind into cabinet slots or other openings.

- 
- Unplug the monitor from the power outlet before cleaning. Do not use liquid cleaners or aerosol cleaners.
  - Do not drop the monitor or place it on an unstable surface.
  - When removing the monitor base, you must lay the monitor face down on a soft area to prevent it from getting scratched, defaced, or broken.

### **Cleaning the Monitor**

The monitor is a high-quality optical device that requires special care when cleaning. To clean the monitor, follow these steps:

1. Turn off the computer and the monitor.
2. Unplug your monitor from the power outlet before cleaning.



**CAUTION:** Do not use benzene, thinner, ammonia, or any volatile substance to clean the monitor screen or cabinet.

These chemicals may damage the monitor. Do not use liquid or aerosol cleaners. Never use water to clean an LCD screen.

3. Wipe the screen with a dry, soft, clean cloth. If the screen requires additional cleaning, use an antistatic screen cleaner.
4. Dust the monitor housing. Use a damp cloth to clean the cabinet. If the cabinet requires additional cleaning, use a clean cloth dampened with isopropyl alcohol.
5. Plug in the monitor.
6. Turn on the monitor and the computer.

---

# Chapter 1. Getting started

This User's Guide provides detailed operation instructions for the user. For quick instruction overview, please see the Setup Poster for brief information.

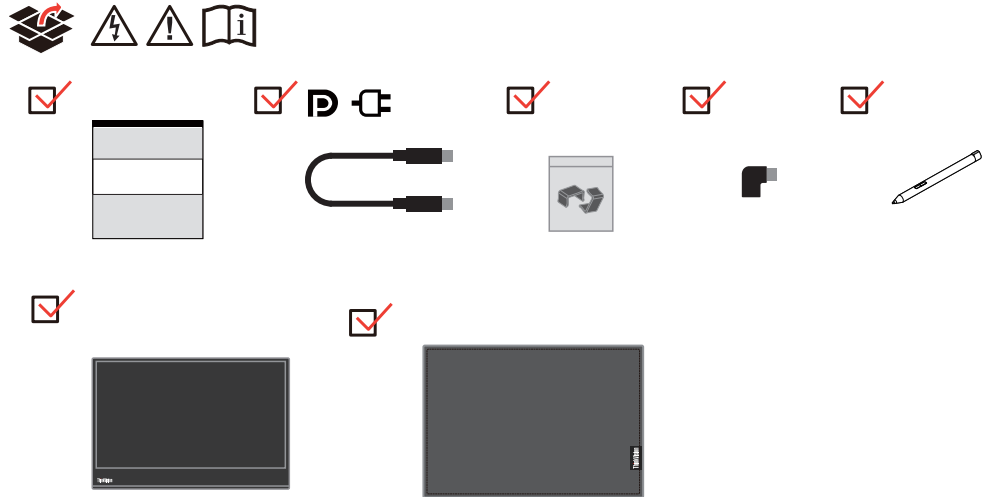
ThinkVision M14t supports Lenovo Display Control Center - **ThinkColour**

---

## Shipping contents

The product package should include the following items:

- Information Flyer
- Flat Panel Monitor
- USB Type C Cable
- Protection bag
- Clip x 2
- L-shape dongle
- Digital pen (The battery is optional)





---

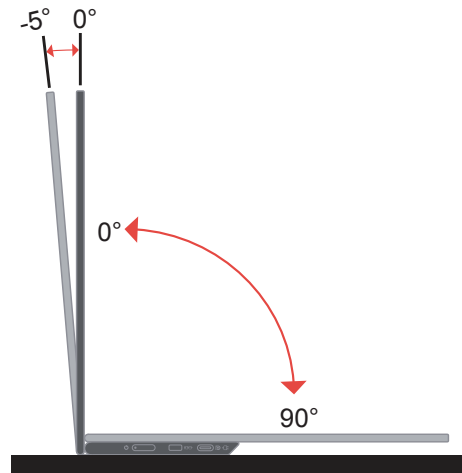
## Product overview

This section will provide information on adjusting monitor positions, setting user controls, and using the cable lock slot.

### Types of adjustments

#### Tilt

Please see the illustration below for an example of the tilt range.



#### Height Adjustment

After using the support located at the bottom of the base, you can raise the height of the monitor.

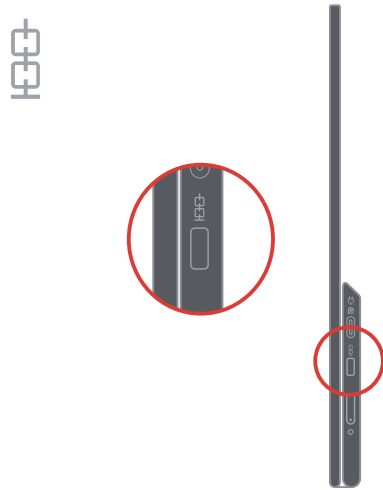


---

## Cable lock slot

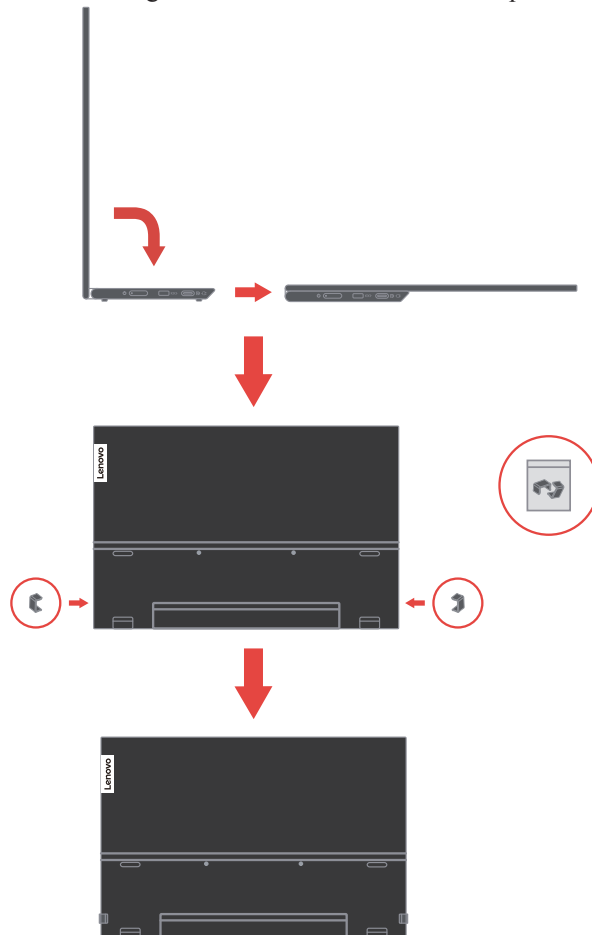
Your monitor is equipped with a cable lock slot. Please follow the instructions that came with the cable lock to attach it.

Your monitor supports the following Lenovo lock: 4X90H35558



## Using clips

The following instructions show how to use clip for monitor wall mounting (optional).



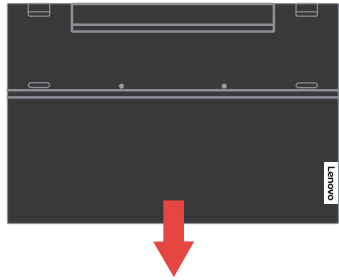
---

**Note:** To attach a VESA mount, please see "Wall Mounting (Optional)" on page 2-19.

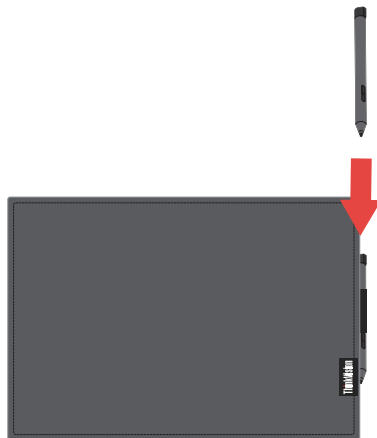
## Protection bag

The protection bag shipped with the monitor can protect your monitor from damage when shipping or storage.

Following illustrations show how to use the protection bag.



Digital pen can be stored at the side of protection bag.



---

## Setting up your monitor

This section provides information on how to set up your monitor.

### Connecting and turning on your monitor

Note: Be sure to read the Safety Information located in the Flyer before carrying out this procedure.

1. Power off your computer and all attached devices, and unplug the computer power cord.



2. There are 2 kinds of usage for M14t; they are normal usage and charging usage.

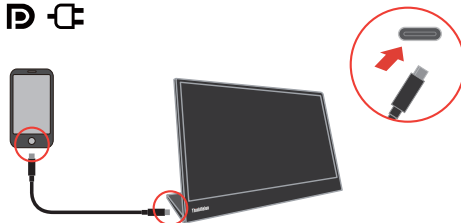
#### Normal usage:

There are 2 kinds of normal usage for M14t; they are notebook and M14t, mobile phone and M14t.

- 1) Connect the USB-C port of notebook and M14t with a USB type-C cable.  
(Electronically marked cable, current rating: 5A)



- 2) Connect the USB-C port of mobile phone and M14t with a USB type-C cable.  
(Electronically marked cable, current rating: 5A).



#### Note:

- For normal usage, devices connected to M14t need to support video signal and power output.
- When you encounter abnormal display condition, please check your devices to see

---

if they support USB-C Alt-mode display and PD2.0 or above. After checking, please re-connect and try again.

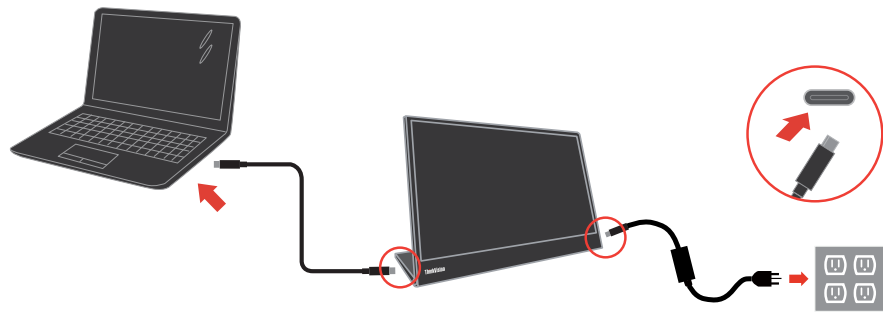
- Not all smart phones can power on M14t. Please confirm with your phone manufacturer to be sure if your phone can output at least 10W (5V2A) power with USB-C interface.
- When your phone can't power on M14t, please connect M14t with an adapter.

### Charging usage:

There are 2 kinds of charging usage for M14t; they are notebook and M14t with power adapter, mobile phone and M14t with power adapter.

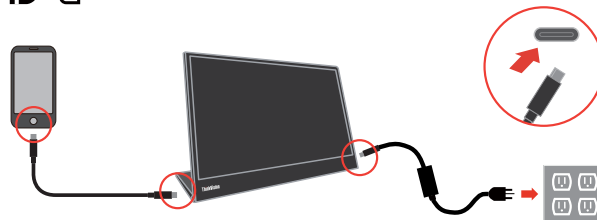
1) Connect Type-C power adapter to the left or right side of M14t and connect M14t to the notebook with a USB-C cable.

(Electronically marked cable, current rating: 5A)



2) Connect Type-C power adapter to the left or right side of M14t and connect M14t to the mobile phone with a USB-C cable.

(Electronically marked cable, current rating: 5A)



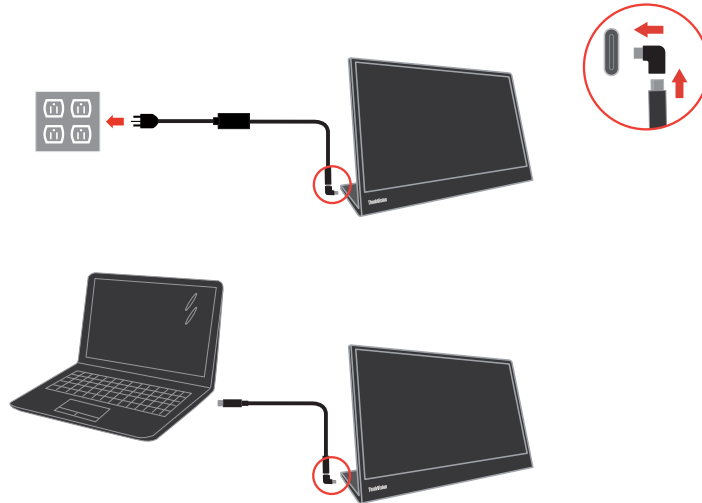
### Note:

- When you encounter abnormal charging condition, please check your power capacity of power adapter connected with M14t and make sure it is enough for M14t and other devices.
- In order to use the monitor smoothly, please refer to the display mode **on page 2-16** and power management on page **2-17**.
- Recommend users to set out screen timeout as “never” on phones to avoid monitor screen off.

---

3. L-shape dongle usage.

The L-shape dongle can be connected to the adapter or USB-C port to have a better cable management.



**Note:** Suggest to use when you rotating the monitor to a different angle, do not use when you need to press the direct access controls key.

4. Power on the monitor.



5. To install the monitor driver, you must download it from Lenovo website, (<https://pcsupport.lenovo.com/solutions/M14t>) and follow the instructions on page 3-5.

---

## Registering your option

Thank you for purchasing this Lenovo® product. Please take a few moments to register your Product and provide us with information that will help Lenovo to better serve you in the future. Your feedback is valuable to us in developing product and services that are important to you, as well as in developing better ways to communicate with you. Register your option on the following Web site:

<http://www.lenovo.com/register>

Lenovo will send you information and updates on your registered product unless you indicate on the Web site questionnaire that you do not want to receive further information.

---

## Chapter 2. Adjusting and using your monitor

This section will give you information on adjusting and using your monitor.

---

### Comfort and accessibility

Good ergonomic practice is important to get the most from your personal computer and to avoid discomfort. Arrange your workplace and the equipment you use to suit your individual needs and the kind of work that you perform. In addition, use healthy work habits to maximize your performance and comfort while using your computer.

---

### Arranging your work area

Use a work surface of appropriate height and available working area to allow you to work in comfort.

Organize your work area to match the way you use materials and equipment. Keep your work area clean and clear for the materials that you typically use and place the items that you use most frequently, such as the computer mouse or telephone, within the easiest reach. Equipment layout and setup play a large role in your working posture. The following topics describe how to optimize equipment setup to achieve and maintain good working posture.

---

### Positioning and viewing your monitor

Position and adjust your computer monitor for comfortable viewing by considering the following items:

- **Viewing distance:** Optimal viewing distances for monitors range from approximately 510mm to 760mm (20 in to 30 in) and can vary depending on ambient light and time of day. You can achieve different viewing distances by repositioning your monitor or by modifying your posture or chair position. Use a viewing distance that is most comfortable for you.
- **Monitor height:** Position the monitor so your head and neck are in a comfortable and neutral (vertical, or upright) position. If your monitor does not have height adjustments, you might have to place books or other sturdy objects under the base of the monitor to achieve the desired height. A general guideline is to position the monitor such that the top of the screen is at or slightly below your eye-height when you are comfortably seated. However, be sure to optimize your monitor height so the line of site between your eyes and the center of the monitor suits your preferences for visual distance and comfortable viewing when your eye muscles are in a relaxed state.
- **Tilt:** Adjust the tilt of your monitor to optimize the appearance of the screen content and to accommodate your preferred head and neck posture.
- **General location:** Position your monitor to avoid glare or reflections on the screen from overhead lighting or nearby windows.



---

The following are some other tips for comfortable viewing of your monitor:

- Use adequate lighting for the type of work you are performing.
- Use the monitor brightness, contrast, and image adjustment controls, if equipped, to optimize the image on your screen to meet your visual preferences.
- Keep your monitor screen clean so you can focus on the screen's contents.

Any concentrated and sustained visual activity can be tiring for your eyes. Be sure to periodically look away from your monitor screen and focus on a far object to allow your eye muscles to relax. If you have questions on eye fatigue or visual discomfort, consult a vision care specialist for advice.

---

## Quick tips for healthy work habits

The following information is a summary of some important factors to consider to help you remain comfortable and productive while you use your computer.

- **Good posture starts with equipment setup:** The layout of your work area and the setup of your computer equipment have a large effect on your posture while using your computer. Be sure to optimize the position and orientation of your equipment by following the tips outlined in “Arranging your work area ” on page 2-1 so you can maintain a comfortable and productive posture. Also, be sure to use the adjustment capabilities of your computer components and office furniture to best suit your preferences now and as your preferences change over time.
- **Minor changes in posture can help avoid discomfort:** The longer you sit and work in front of your computer, the more important it is to observe your working posture. Avoid assuming any one posture for an extended period of time. Periodically make minor modifications in your posture to help deter any discomforts that might arise. Make use of any adjustments that your office furniture or equipment provide to accommodate changes in posture
- **Short, periodic breaks help ensure healthy computing:** Because computing is primarily a static activity, it is particularly important to take short breaks from your work. Periodically, stand up in front of your work area, stretch, walk for a drink of water, or otherwise take a short break from using your computer. A short break from work gives your body a welcome change in posture and helps to ensure you remain comfortable and productive while you do work.

---

## Eye Strain

- **Break Times**

Computer users should take some time away from the screen especially if working for prolonged hours. Generally, it is recommended to take short breaks (5 – 15 min.) after 1 –2 hours of continuous computer work. Taking short and frequent breaks is more advised than longer breaks.

- **Looking at Distant Objects**

Users often blink less when in front of monitor screen. To minimize eye strain and dryness, users should rest the eye periodically by focusing on objects that are far away.

---

- **Eye Exercises:**

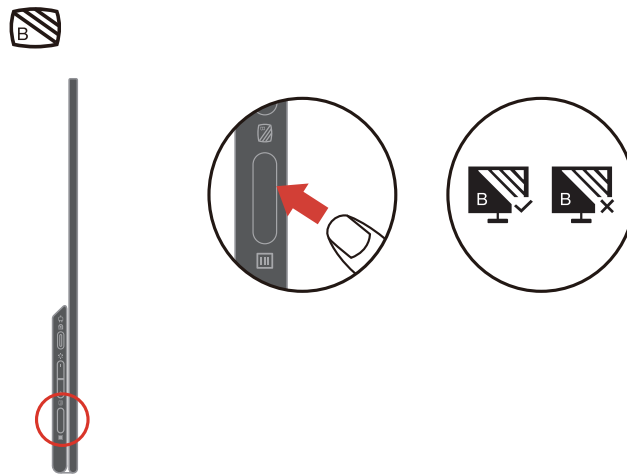
1. Alternate looking up and looking down while keeping the body and head upright.
2. Slowly roll your eyes to look to the left and right.
3. Roll eyes to look at objects on the upper right corner and then on lower right. Do same thing to look at objects on the upper left and lower left.

---

## Low Blue Light

Concerns on blue light affecting eye health have risen over the years. Blue light have wavelength between 300 nm to 500 nm. The monitors have a factory setting that reduces blue light emissions.

Press and hold Low Blue Light key for 3 seconds to enable/disable Low blue light.



---

## Interact with your monitor

The monitor can be placed at different positions. The orientation of the content changes automatically when you rotate the monitor to a different angle. To optimize the experience, the default setting of auto rotation is on. You can turn off the auto rotation through the setting in OSD.

You can switch your display into one of 3 user modes by rotating the display to a different angle.

### Note:

- Resolution and project mode can be memorized when M14t in stand mode or portrait mode respectively by notebook.
- For more convenient use, please firstly rotate to the angle you need then adjust display mode in notebook.
- Recommend users to set extend mode when M14t is in portrait mode.
- When rotating M14t, make sure the connection between M14t & attached device is connected properly. Improper connection might cause the connection to be loose and M14t will enter **standby** mode. You can re-connect the attached device to resume M14t.

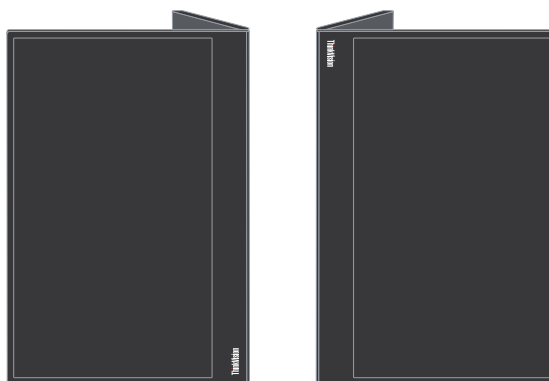
### Stand mode

Suitable for tasks that require limited interaction with the touch screen (such as displaying graphs or PowerPoint presentations).



### Portrait mode

Suitable for tasks that require little or no touch (such as viewing photos or playing videos).

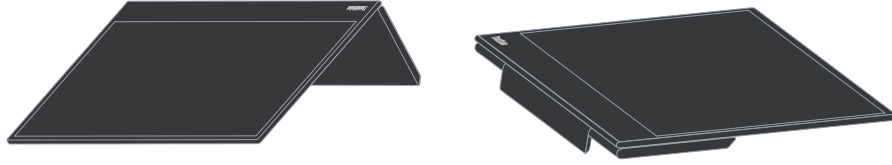


### Note:

In this mode, place M14t on flat surface and connect M14t with attached device through the USB-C port on the top. Place M14t on uneven surface might cause the button on the bottom to be mis-activated.

## Inverted mode





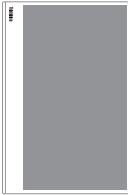








Suitable for tasks that require frequently touching the screen (such as surfing the web, playing games, and more).



## Rotation display

When connected with different devices, M14t can display in different modes as below:

- When connected with notebook, M14t in portrait mode will display center-screen or full-screen based on notebook desktop modes (Duplicate or Extend).
- When connected with Phone, M14t in portrait mode will display center-screen or full-screen based on phone positions (Portrait or Landscape).

Connected device	Monitor			
<p data-bbox="437 877 528 905">Notebook</p> 	<p data-bbox="651 877 762 905">Stand mode</p> 	<p data-bbox="850 877 962 905">Inverted mode</p> 	<p data-bbox="1058 863 1169 915">Portrait mode (duplicate)</p> 	<p data-bbox="1273 863 1385 915">Portrait mode (extend)</p> 
<p data-bbox="453 1161 512 1188">Phone</p>  <p data-bbox="437 1360 528 1388">(Portrait)</p>	<p data-bbox="651 1161 762 1188">Stand mode</p> 	<p data-bbox="850 1161 962 1188">Inverted mode</p> 	<p data-bbox="1058 1150 1169 1203">Portrait mode (duplicate)</p> 	
<p data-bbox="453 1455 512 1482">Phone</p>  <p data-bbox="419 1627 545 1654">(Landscape)</p>	<p data-bbox="651 1455 762 1482">Stand mode</p> 	<p data-bbox="850 1455 962 1482">Inverted mode</p> 	<p data-bbox="1058 1444 1169 1497">Portrait mode (duplicate)</p> 	

**Note:**

- Rotating process should take few seconds, please be patient to wait.

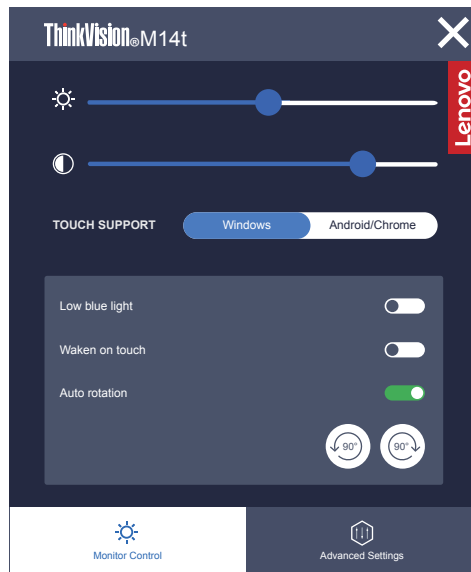
---

## Touch Screen

1. M14t is equipped with Touch screen to optimize your M14t experience.
  - You can use either single finger touch, or multi-finger touch up to maximum simultaneous 10 touch points.
  - You can use Lenovo Digital Pen.
2. M14t touch function is available with notebooks or smart phones with Windows, Android, Chrome OS which supports HID multi-touch, Microsoft Pen Protocol or single-touch. Please confirm with your notebook/phones manufacturer to be sure its function availability. The default setting is to support Windows OS. You can change the touch support OS selection in OSD. You can change the touch support OS selection in OSD.

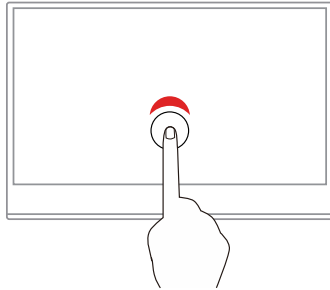
### Note:

- Do not touch the screen with sharp objects, it may result in damage, and void warranty.
- Do not push hard, or rest anything on the glass surface (if in horizontal position) as it will damage the screen and void warranty.
- Please keep your hands clean and dry before touching the screen to ensure fluid touch operation.



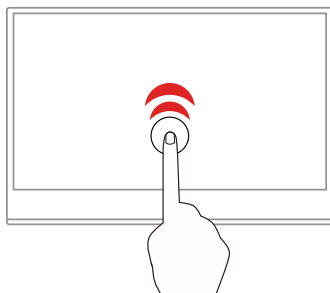
---

If your connected device supports multi-touch function, you can navigate the screen with simple touch gestures.



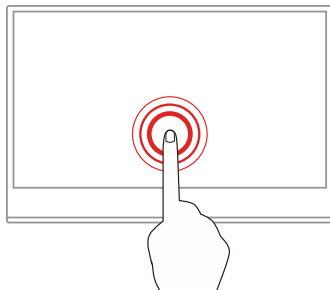
**Tap once**

- From the Start menu: Open an app or item.
- From the desktop: Select an app or item.
- In an open app: Perform an action such as Copy, Save, and Delete, depending on the app.



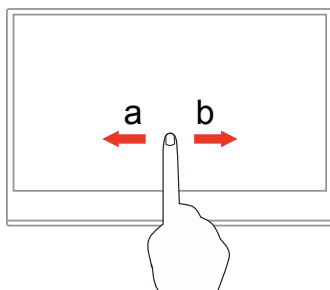
**Tap twice quickly**

Open an app or item from the desktop.



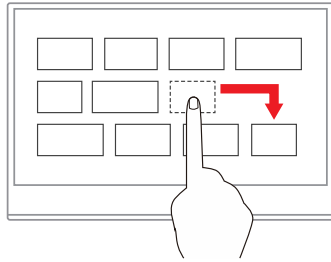
**Tap and hold**

Open a shortcut menu.



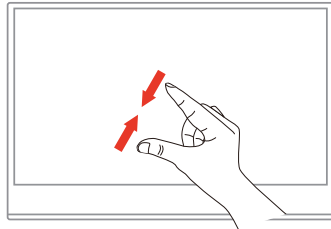
**Slide**

Scroll through items, such as lists, pages, and photos.



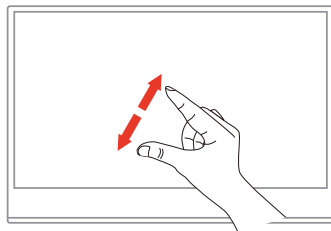
**Drag an item to the location you want**

Move an object.



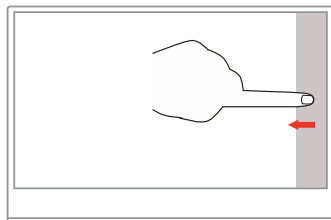
**Move two fingers closer together**

Zoom out.



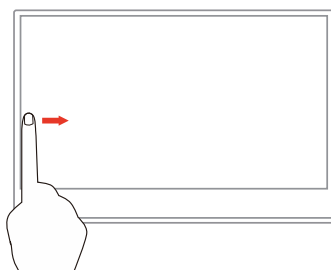
**Move two fingers farther apart**

Zoom in.



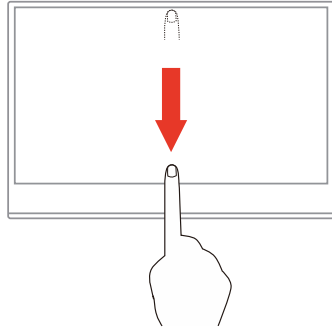
**Swipe in from the right edge**

Open the action center to see your notifications and quick actions.



**Swipe in from the left edge**

View all your open windows in task view.



- Swipe downwards shortly from the top edge (for full-screened app or when your computer is in the tablet mode)

Show a hidden title bar.

- **Swipe in from the top edge to the bottom edge (when your computer is in the tablet mode)**

Close the current app.



---

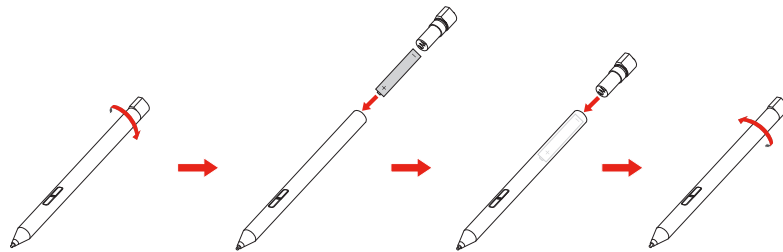
## Lenovo Digital Pen

Selected models are equipped with Lenovo Digital Pen. The pen is not waterproof. Keep the pen away from water and excessive moisture. To purchase Lenovo Digital Pen, go to <https://www.lenovo.com/accessories>.

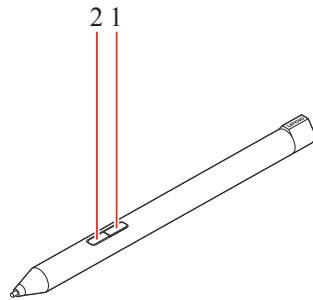
M14t is bundled with 4096 pressure level active pen (optional), pen pressure and buttons are available in Windows. Behavior of pen pressure and buttons depends on the software and application definition, please confirm the definition of software and application to be sure its function availability.

### Install the AAAA battery

Lenovo Digital Pen uses AAAA battery. The AAAA battery is provided in some countries or regions.

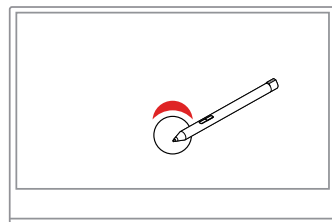


### Use Lenovo Digital Pen



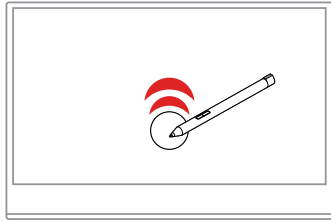
- 1** Top button
- 2** Bottom button

You can perform the following operations with the Lenovo Digital Pen:



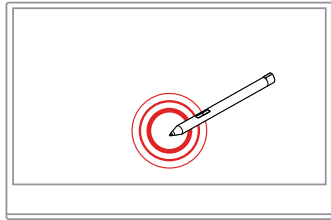
#### Tap once

Click or make a selection.



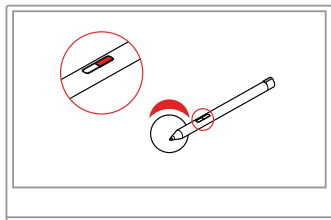
**Tap twice quickly**

Open an app or item from the desktop.



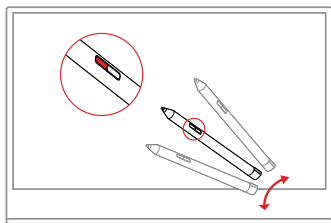
**Tap and hold**

Right-click



**Hold the Top button **1** and tap the screen**

Right-click



**Hold the Bottom button **2** and tap the screen**

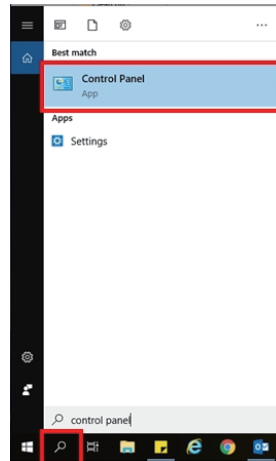
Erase ink in supported applications.

---

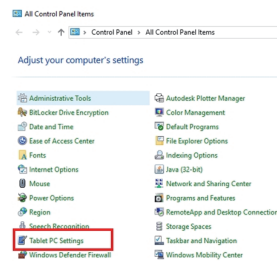
## Touch setting when multi monitors connecting

Please follow below steps to set M14t as the touch monitor when connecting multiple monitors with notebooks.

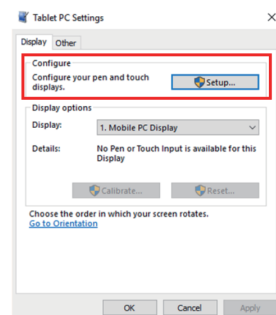
Step 1: Search “Control Panel”



Step 2: Find “Tablet PC Settings”



Step 3: Click “SetUp”



Step 4: Press Enter until the message moves to M14t. Tap the screen to identify it to complete the setting.

Follow the steps above and the M14t will display the message shown below:

Tap this screen with a single finger or touch pen to identify it as the touch monitor. If this is not the Tablet PC screen, press Enter to move to the next screen. To close the tool, press Esc.





## Adjusting your monitor image

This section describes the user control features used to adjust your monitor image.

### Using the direct access controls

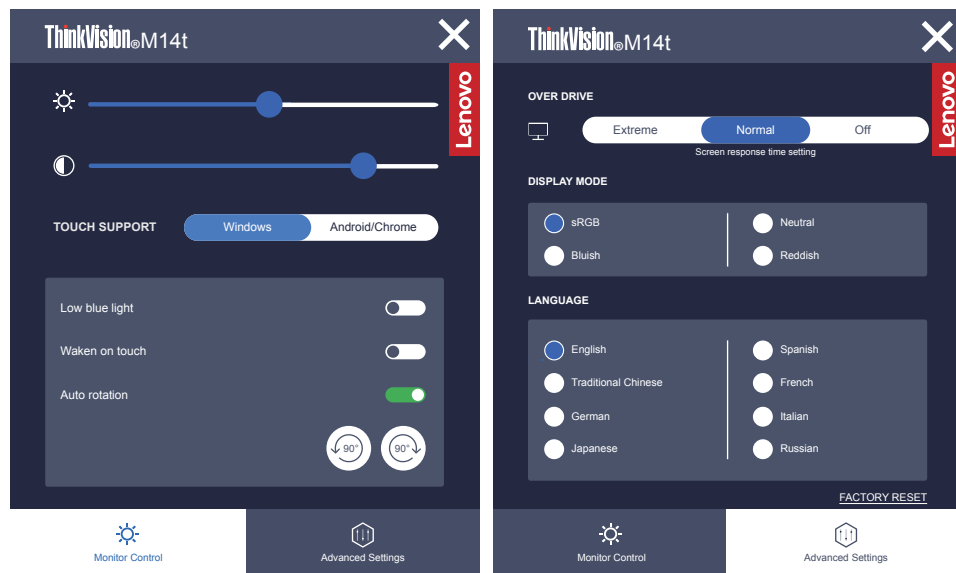
The direct access controls can be used when the On Screen Display (OSD) is not displayed.

Table 2-1. Direct access controls

Icon	Control	Description
	Brightness	Press + or - key for Brightness adjustment.
	Contrast	Press and hold + key over 3 seconds for Contrast adjustment.
	Main menu	Press to enable/disable Main menu.
	Low blue light	Press and hold Low Blue Light key for 3 seconds to enable/disable Low blue light.

### Using the On-Screen Display(OSD) controls

To use the controls: Press  to open the main OSD menu.



#### Note:

- When Brightness adjustment bar is displayed on screen, use + or - for adjustment.
- When Contrast adjustment bar is displayed on screen, use + or - for adjustments.
- Low Blue Light Mode is reducing the blue light content.
- The use of Extreme Mode (response time) may result in reduced display quality when fast moving video graphics are displayed. Users should check Extreme Mode (response time) to verify if it is compatible with any applications they would like to use it with.
- The ENERGY STAR option resets all user settings to default values so that the monitor can meet the requirements of Energy Star.








Energy Star is an energy saving program for consumer electronics led by the U.S. government. It was launched in 1992 by EPA and DOE to reduce energy consumption and greenhouse gas emissions. Energy Star logo is a symbol of energy conservation and environmental protection. It improves the concept of energy efficiency of consumers and manufacturers, and effectively guides the market.

The regulation of Energy Star improves energy efficiency and reduces air pollution by using more energy-efficient equipment in homes, offices and factories. One way to achieve this goal is to use management to reduce energy consumption when products are not in use. The default settings for monitors conform to Energy Star certification. Any changes by users for more features and functionalities may increase power consumption, which will exceed the limitation of Energy Star's standard. If the user changes the options related to energy efficiency when using, such as brightness, color mode, etc., select All Reset Factory or choose the Energy Star option, the power consumption will be restored to the energy efficiency with Energy Star standard.


For more information, please refer to ([www.energystar.gov/products](http://www.energystar.gov/products)). All products of Energy Star will be posted online and can be accessed directly by governments, public institutions and consumers.

Table 2-2. OSD functions

OSD Icon on Main Menu	Submenu	Description
 Monitor control	 Brightness	Adjusts overall screen brightness.
	 Contrast	Adjusts difference between light and dark areas.
	TOUCH SUPPORT	Select Windows for notebook with Windows OS and select Android/Chrome for Android phone.
	Low blue light	Selects to Enable/Disable Low Blue Light
	Waken on touch	Wake up monitor from <b>standby</b> mode through touch.
	Auto rotation	Selects to Enable/Disable Auto rotation
		Selects to Enable/Disable manual rotation and turn the image in the clockwise/anti-clockwise direction.
 Advanced settings	Over Drive	Screen response time setting.
	Display Mode	Adjusts sRGB/Neutral/Bluish/Reddish.
	Language	Changes languages of menu.
	Factory Reset	Resets monitor to the original factory settings.

---

## Using the Wake on touch Function

You can wake up your monitor from **standby** mode through touch. To use the function: Press  to open the main OSD menu. Turn on the wake on touch function.



### Note:

- It can't support wake on touch when notebook enter the Modern Standby
- Turn on the wake on touch function, the power consumption will increase in **standby** mode.

---

## Selecting a supported display mode

The display mode the monitor uses is controlled by the computer. Therefore, refer to your computer documentation for details on how to change display modes.

The image size, position and shape might change when the display mode changes.

Unlike CRT monitors, which require a high refresh rate to minimize flicker, LCD or Flat Panel technology is inherently flicker-free.

Note: If your system has previously been used with a CRT monitor and is currently configured to a display mode outside the range of this monitor, you may need to re-attach the CRT monitor temporarily until you have re-configured the system; preferably to 1920x1080 at 60Hz, which is the Native Resolution Display mode.

Response time: 6ms with overdrive @60Hz

Table 2-3. Factory set display modes

Addressability	Refresh rate
PAL	50Hz
640x350	70Hz
640x480	60Hz, 66Hz, 72Hz, 75Hz
720x400	70Hz
800x600	60Hz, 72Hz, 75Hz
1024x768	60Hz, 70Hz, 75Hz
1152x864	75Hz
1280x768	60Hz
1280x800	60Hz
1280x1024	60Hz, 72Hz, 75Hz
1366x768	60Hz
1440x900	60Hz, 75Hz
1600x1200	60Hz, 70Hz
1680x1050	60Hz
1920x1080	60Hz
1080x1920	60Hz

**Note:** The video signal source connected to M14t needs to support USB-C DP Alt-mode video output.

## Understanding power management

Power management is invoked when the computer recognizes that you have not using your mouse or keyboard for a user-definable period. There are several states as described in the table below.

For optimal performance, switch off your monitor at the end of each working day, or whenever you expect to leave it unused for long periods during the day.

Table 2-4. Power indicator

State	Power Indicator	Screen	Restoring Operation	Compliance
On	Steady white	Normal		
Standby/Suspend	Steady amber	Blank	Press a key or move the mouse. There may be a slight delay reappears. <b>Note:</b> Standby also occurs if there is no image output to the monitor.	ENERGY STAR
Off	Off	Blank	Press power key to switch on There may be a slight delay before the image reappears.	ENERGY STAR

### Power Management Modes

VESA Modes	Horizontal Sync	Vertical Sync	Video	Power Indicator	Power Consumption
Normal operation	Active	Active	Active	White	Max Consumption *: 9.5 W(without Type C output) 87 W(with 65W output) Typical Consumption : 8 W(without Type C output) 85 W(with 65W output)
Active-off mode	Inactive	Inactive	Off	Amber	Less than 0.3 W
Switch off	-	-	-	Off	Less than 0.3 W

Energy Star	Power Consumption
$P_{ON}$	7.22 W
$E_{TEC}$	25.5 kWh

\*\* Maximum power consumption with max luminance.

This document is informational only and reflects laboratory performance. Your product may perform differently, depending on the software, components and peripherals you ordered and shall have no obligation to update such information. Accordingly, the customer should not rely upon this information in making decisions about electrical tolerances or otherwise. No warranty as to accuracy or completeness is expressed or implied.



---

### **Power Input and Output Definition:**

1. M14t can be powered on by devices more than 10W with USB-C interfaces that can support 5V, 9V, 15V and 20V power delivery input. The permitted maximum input power of M14t is DC 100W.
2. The maximum power delivery output of M14t is 65W and monitor can support 5V, 9V, 15V and 20V power delivery output.
3. If you connect M14t with mobile phones only, mobile phones need to support USB-C PD2.0 output or above, and supply at least 10W power to power on M14t.
4. The power capacity of power adapter connected with M14t will affect the charging capability of M14t to devices.
  - Recommend to use 65W or above of type-C adapter to use with M14t when you want to charge your notebook.
  - Recommend to use 18W or above of type-C adapter to use with M14t when you want to charge your mobile phone.
5. While plugging with adapters without USB-C PD function and another type-C side connecting with phone or notebook, M14t may consume power from phones or notebook.

### **Recommendation of USB-C devices:**

Because notebooks and mobile phones with a USB Type-C port released on the market are very various, we can't guarantee that the monitor can charge all types of notebooks and mobile phones with a USB Type-C port. Make sure that the USB Type-C cable complies with the USB PD specification. Otherwise, your devices may be damaged. So please use the attached USB Type-C cable.

For charging usage, Lenovo 65W Standard AC adapter (USB Type-C):

PN: 4X20M262\*\* (the\*\* can be 68 to 83, for sales area use only) is recommended.

---

## Caring for your monitor

Be sure to turn off the power before you perform any maintenance on the monitor.

**Do not:**

- Apply water or liquid directly to your monitor.
- Use solvents or abrasives.
- Use flammable cleaning materials to clean your monitor or any other electrical equipment.
- Touch the screen area of your monitor with sharp or abrasive items. This type of contact may cause permanent damage to your screen.
- Use any cleaner which contains an anti-static solution or similar additives. This may harm the coating of the screen area.

**Do:**

- Lightly dampen a soft cloth with water and use this to gently wipe the covers and the screen.
- Remove grease or finger marks with a damp cloth and a little mild detergent.

---

## Wall Mounting (Optional)

Refer to the instructions that come with the VESA compatible base mounting kit.

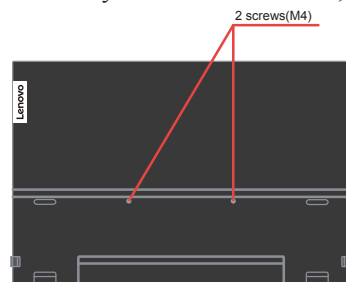
1. Place the monitor face down on a non-abrasive surface on stable flat table.
2. Use clips to lock the monitor.



3. Attach the mounting bracket from the wall mounting kit to the monitor.
4. Mount the monitor on the wall by following the instructions that come with the base mounting kit.

**Note:**

- For use only with UL and GS Listed Wall Mount Bracket with minimum weight/load bearing capacity of 6.00 kg.
- When you use a flexible arm, do not tilt the monitor downward by more than 5 degrees.



## Chapter 3.Reference information

This section contains monitor specifications, instructions to manually install the monitor driver, troubleshooting information.

### Monitor specifications

Table 3-1. Monitor specifications for type-model 62A3-UARI-WW

Dimensions	Height	214.34 mm (8.44 in.)
	Depth	13.95 mm (0.55 in.)
	Width	323.37 mm (12.73 in.)
Stand	Tilt	Range: -5°~90°
Image	Viewable image size	355.60 mm (14.00 in.)
	Maximum height	173.99 mm (6.85 in.)
	Maximum width	309.31 mm (12.18 in.)
	Pixel pitch	0.1611mm (V)
	Response time	Off:14ms Normal:8ms Extreme:6ms
Power input	Supply voltage /current	5V or 9V or 15V DC 3A or 20V DC 5A Max.
USB Type C PD Function	Supply voltage/current	5V or 9V or 15V DC 3A or 20V DC 3.25A Max.
Power consumption Note: Power consumption figures are for the monitor only.	Max Consumption	9.5 W(without Type C output) 87 W(with 65W output)
	Typical Consumption	8 W(without Type C output) 85 W(with 65W output)
	Standby/Suspend	< 0.3W
	Off	< 0.3W
Video input (Digital)	Input signal	Type C
	Horizontal addressability	1920 pixels (max)
	Vertical addressability	1080 lines (max)
	Clock frequency	210 MHz (max)
Communications	VESA DDC	CI
Supported Display Modes (VESA Standard modes between noted ranges)	Horizontal frequency	30 kHz – 90 kHz
	Vertical frequency	50 Hz – 75 Hz
	Native Resolution	1920 x 1080 at 60 Hz

---

Temperature	Operating	0° to 40°C (32°F to 104° F)
	Storage	-20° to 60°C (-4°F to 140° F)
	Shipping	-20° to 60°C (-4° F to 140° F)
Humidity	Operating	10% to 80% non-condensing
	Storage	5% to 95% non-condensing
	Shipping	5% to 95% non-condensing

## Troubleshooting

If you have a problem setting up or using your monitor, you might be able to solve it yourself. Before calling your dealer or Lenovo, try the suggested actions that are appropriate to your problem.

Table 3-2. Troubleshooting

Problem	Possible cause	Suggested action	Reference
The words "Out of Range" are shown on the screen, and the power indicator is flashing white.	The system is set to a display mode which is not supported by the monitor	<ul style="list-style-type: none"> <li>• If you are replacing an old monitor, reconnect it and adjust the display mode to within the specified range for your new monitor.</li> <li>• If using a Windows system, restart the system in safe mode, then select a supported display mode for your computer.</li> <li>• If these options do not work, contact the Customer Support Centre.</li> </ul>	"Selecting a supported display mode" on page 2-16
The image quality is unacceptable	The video signal cable is not connected with the monitor or system completely.	Be sure the signal cable is firmly plugged into the system and monitor.	"Connecting and turning on your monitor" on page 1-5
The power indicator is not lit and there is no image.	<ul style="list-style-type: none"> <li>• The monitor's power switch is not switched on.</li> <li>• The power cord is loose or disconnected.</li> <li>• There is no power at the outlet.</li> </ul>	<ul style="list-style-type: none"> <li>• Be sure the power cord is connected properly.</li> <li>• Be sure the outlet has power.</li> <li>• Power on the monitor.</li> <li>• Try using another power cord.</li> <li>• Try using another electrical outlet.</li> </ul>	"Connecting and turning on your monitor" on page 1-5
Screen is blank and power indicator is steady amber or flashing white	The monitor is in Standby / Suspend mode	<ul style="list-style-type: none"> <li>• Press any key on the keyboard or move the mouse to restore operation.</li> <li>• Check the Power options settings on your computer.</li> </ul>	"Understanding power management" on page 2-17
The power indicator is white, but there is no image	The video signal cable is loose or disconnected from the system or monitor	Be sure the video cable is connected with the system properly	"Connecting and turning on your monitor" on page 1-5
	The monitor brightness is at the lowest setting.	Adjust the brightness setting on the Brightness control.	"Adjusting your monitor image" on page 2-13
One or more of the pixels appear discolored	This is a characteristic of the LCD technology and is not an LCD defect	If there are more than five pixels missing, contact the Support Center	"Appendix A, Service and Support" on page A-1

Table 3-2. Troubleshooting

Problem	Possible cause	Suggested action	Reference
<ul style="list-style-type: none"> <li>Fuzzy lines in text or a blurry image</li> <li>Horizontal or vertical lines through the image.</li> </ul>	<ul style="list-style-type: none"> <li>Image setup has not been optimized</li> <li>Your system Display Properties setting have not been optimized.</li> </ul>	Adjust the resolution settings on your system to match the native resolution for this monitor: 1920 x 1080 at 60 Hz.	"Selecting a supported display mode" on page 2-16
		When working in the native resolution, you may find additional improvements by adjusting the Dots Per Inch (DPI) setting on your system	See the Advanced section of your system's display properties
Monitor consumes power from notebook or phones when connected with adapter.	Adapter has no USB-C PD function.	Use USB C to C adapter connecting with M14t and charging your notebook or phone.	"Understanding power management" on page 2-17
M14t can't be powered on by notebooks or phones.	<ul style="list-style-type: none"> <li>USB C ports of notebooks or phones can't support power output or Alt-mode.</li> <li>Notebooks or phones have no enough power to support M14t.</li> </ul>	<ul style="list-style-type: none"> <li>Check the USB C ports of notebooks or phones and make sure they support PD 2.0 and DP 1.2 Alt mode.</li> <li>Connect M14t with adapter then power on.</li> </ul>	"Connecting and turning on your monitor" on page 1-5 and "Understanding power management" on page 2-17
Normally display when M14t connecting with 45W power adapter and notebook, but no charging symbol showing in notebook.	Power input of notebook must be 45w or above, M14t can't provide enough power for notebook.	<ul style="list-style-type: none"> <li>You can connect the adapter and M14t with notebook, then notebook can be charged by adapter and can power on M14t.</li> <li>Use 65W or above adapter to connect with M14t, and then charge notebook.</li> </ul>	"Understanding power management" on page 2-17
Abnormal behavior presented in touch, rotation and data transfer function	The signal cable is not connected with the monitor or system completely.	<ul style="list-style-type: none"> <li>Check the USB C cable and connect the cable again.</li> <li>Check whether the system supports HID multi-Touch, Microsoft Pen Protocol or single-Touch.</li> </ul>	"Connecting and turning on your monitor" on page 1-5
M14t displays wrong resolution after rotating.	The signal cable is not connected with the monitor or system completely.	Check the USB C cable and connect the cable again.	"Connecting and turning on your monitor" on page 1-5
Monitor blink or screen off when connecting with smart phones	<ul style="list-style-type: none"> <li>Smart phones can't supply enough power for monitor</li> <li>Smart phones screen off when timeout</li> </ul>	<ul style="list-style-type: none"> <li>Connecting adaptor with monitor, then monitor connecting with smart phones.</li> <li>Set screen timeout as "never" on smart phones to avoid monitor screen off.</li> </ul>	"Understanding power management" on page 2-6

---

## Manually installing the monitor driver

Below are steps for manually installing the monitor driver in Microsoft Windows 7, Microsoft Windows 10.

### Installing the monitor driver in Windows 7

To install the device driver in Microsoft® Windows 7, do the following:

1. Turn off the computer and all attached devices.
2. Ensure that the monitor is connected correctly.
3. Turn on the monitor and then turn on the computer. Allow your computer to boot into Windows 7 operating system.
4. From the Lenovo website <https://pcsupport.lenovo.com/solutions/m14t>, find the corresponding monitor driver and download it to a PC to which this monitor is connected (such as a desktop).
5. Open the Display Properties window by right-clicking Start, Control Panel, Hardware and Sound icon, and then click the Display icon.
6. Click the Change the display settings tab.
7. Click the Advanced Settings icon.
8. Click the Monitor tab.
9. Click the Properties button.
10. Click the Driver tab.
11. Click Update Driver, then click Browse the computer to find the driver program.
12. Select Pick from the list of device driver program on the computer.
13. Click the Have Disk button. By clicking the Browse button, browse and point to the following path:  
X:\Monitor Drivers\Windows 7  
(Where X indicates "the folder in which the downloaded driver is located" (such as a desktop))
14. Select the "M14t.inf" file and click the Open button. Click the OK button.
15. Select Lenovo M14t and click Next.
16. After the installation is complete, delete all downloaded files and close all windows.
17. Restart the system. The system will automatically select the maximum refresh rate and corresponding Colour Matching Profiles.

**Note:** On LCD monitors, unlike CRTs, a faster refresh rate does not improve display quality. Lenovo recommends using either 1920 x 1080 at a refresh rate of 60 Hz, or 640 x 480 at refresh rate of 60 Hz.

---

### Installing the monitor driver in Windows 10

To use the Plug and Play feature in Microsoft Windows 10, do the following:

1. Turn off the computer and all attached devices.
2. Ensure that the monitor is connected correctly.
3. Turn on the monitor and then turn on the computer. Allow your computer to boot into Windows 10 operating system.
4. From the Lenovo website <https://pcsupport.lenovo.com/solutions/m14t>, find the corresponding monitor driver and download it to a PC to which this monitor is connected (such as a desktop).
5. On the Desktop, move mouse to bottom-left corner of screen, right-click to choose Control Panel, then double click the icon of Hardware and Sound, and then click Display.
6. Click the Change the display settings tab.
7. Click the Advanced Settings button.
8. Click the Monitor tab.
9. Click the Properties button.
10. Click the Driver tab.
11. Click Update Driver, then click Browse the computer to find the driver program.
12. Select "Let me pick from a list of device drivers on my computer".
13. Click the Have Disk button. By clicking the Browse button, browse and point to the following path:  
X:\Monitor Drivers\Windows 10  
(where X indicates "the folder in which the downloaded driver is located" (such as a desktop))
14. Select the "M14t.inf" file and click the Open button. Click the OK button.
15. In the new window, select Lenovo M14t and click Next.
16. After the installation is complete, delete all downloaded files and close all windows.
17. Restart the system. The system will automatically select the maximum refresh rate and corresponding Color Matching Profiles.

**Note:** On LCD monitors, unlike CRTs, a faster refresh rate does not improve display quality. Lenovo recommends using either 1920 x 1080 at a refresh rate of 60 Hz, or 640 x 480 at a refresh rate of 60 Hz.



---

## Service information

### Customer responsibilities

The warranty does not apply to a product which has been damaged due to accident, misuse, abuse, improper installation, usage not in accordance with product specifications and instructions, natural or personal disaster, or unauthorized alterations, repairs or modifications.

The following are examples of misuse or abuse and not covered by warranty:

- Images burned on to the screen of a CRT monitor. Burned image is preventable by utilizing a moving screen saver or power management.
- Physical damage to covers, bezel, base and cables.
- Scratches or punctures on monitor screens.

### Getting further help

If you still can't solve your problem, please contact the Customer Support Centre. For more information on contacting the Customer Support Centre, please see Appendix A, "Service and Support" on page A-1.

### Service parts

The following parts are for use by Lenovo service, or Lenovo authorized dealers to support the customer warranty. Parts are for service use only. The table below shows information for model (A20140FX0/ ThinkVision M14t/ 62A3-UAR1-WW).

Table 3-3. List of service parts

<b>FRU (Field Replaceable Unit) Part number</b>	<b>Description</b>	<b>Machine Type Model (MTM)</b>	<b>colour</b>
5D10Z67688	M14t - 14 inch FRU Monitor	62A3	Raven Black
5C10Z67690	M14t -USB C-C cable (1 m)	62A3	Raven Black
5C10Z67689	M14t- L-shape dongle	62A3	Raven Black
5CF0Z67691	M14t -Protect Bag	62A3	Gray surface with red liner
01FR719	M14t touch pen	62A3	Iron Grey
01FR720	M14t touch pen	62A3	Iron Grey
01FR722	M14t touch pen	62A3	Iron Grey

---

## Appendix A. Service and Support

The following information describes the technical support that is available for your product, during the warranty period or throughout the life of the product. Refer to your Lenovo Statement of Limited Warranty for a fully explanation of Lenovo warranty terms.

---

### Registering your option

Register to receive product service and support updates, as well as free and discounted computer Accessories and content. Go to:  
<http://www.lenovo.com/support>

---

### Online technical support

Online technical support is available during the life of your product through the Lenovo Support Web site at <http://www.lenovo.com/support>. Product replacement assistance or exchange of defective components also is available during the warranty period, assistance for replacement or exchange of defective components is available. In addition, if your option is installed in a Lenovo computer, you might be entitled to service at your location. Your technical support representative can help you determine the best alternative.

---

### Telephone technical support

Installation and configuration support through the Customer Support Center will be withdrawn or made available for a fee, at Lenovo's discretion, 90 days after the option has been withdrawn from marketing. Additional support offerings, including step-by-step installation assistance, are available for a nominal fee.

To assist the technical support representative, have available as much of the following information as possible:

- Option name
- Option number
- Proof of purchase
- Computer manufacturer, model, serial number, and manual
- Exact wording of the error message (if any)
- Description of the problem
- Hardware and software configuration information for your system

If possible, be at your computer. Your technical support representative might want to walk you through the problem during the call.

---

## Worldwide telephone list

Phone numbers are subject to change without notice. For the most current phone Numbers, go to <http://www.lenovo.com/support/phone>

Country or Region	Telephone Number
Argentina	0800-666-0011 (Spanish, English)
Australia	1-800-041-267 (English )
Austria	0810-100-654 (local phone) (German)
Belgium	Warranty service and support: 02-339-36-11 (Dutch, French)
Bolivia	0800-10-0189 ( Spanish)
Brazil	Calls made from within the Sao Paulo region: 11-3889-8986 Calls made from outside the Sao Paulo region: 0800-701-4815 (Portuguese)
Brunei Darussalam	800-1111 (English)
Canada	1-800-565-3344 (English, French)
Chile	800-361-213(Spanish )
China	Technical Support Line: 400-100-6000 (Mandarin)
China (Hong Kong S.A.R.)	(852) 3516-8977 (Cantonese, English, Mandarin)
China (Macau S.A.R.)	0800-807 / (852) 3071-3559 (Cantonese, English, Mandarin)
Colombia	1-800-912-3021 (Spanish)
Costa Rica	0-800-011-1029( Spanish )
Croatia	385-1-3033-120(Croatian)
Cyprus	800-92537(Greek)
Czech Republic	800-353-637(Czech)
Denmark	Warranty service and support: 7010-5150 (Danish)
Dominican Republic	1-866-434-2080(Spanish )
Ecuador	1-800-426911 (OPCION 4) (Spanish )
Egypt	Primary: 0800-0000-850 Secondary:0800-0000-744 (Arabic, English)
El Salvador	800-6264 (Spanish)
Estonia	372-66-0-800 (Estonian, Russian, English)
Finland	Warranty service and support: +358-800-1-4260(Finnish)
France	Warranty service and support (hardware): 0810-631-213(French)

Country or Region	Telephone Number
Germany	Warranty service and support: 0800-500-4618 (toll-free)(German)
Greece	Lenovo Business Partner (Greek)
Guatemala	Dial 999-9190, wait for operator, and request to reach 877-404-9661 (Spanish)
Honduras	Dial 800-0123(Spanish)
Hungary	+36-13-825-716 (English, Hungarian)
India	Primary: 1800-419-4666 (Tata) Secondary: 1800-3000-8465 (Reliance) Email: commercialts@lenovo.com (English and Hindi)
Indonesia	1-803-442-425 62 213-002-1090 (Standard Charges Apply) (English, Bahasa Indonesia)
Ireland	Warranty service and support: 01-881-1444 (English)
Israel	Givat Shmuel Service and Center: +972-3-531-3900 (Hebrew, English)
Italy	Warranty service and support: +39-800-820094 (Italian)
Japan	0120-000-817 (Japanese, English)
Kazakhstan	77-273-231-427(Standard charges Apply) (Russian , English)
Korea	080-513-0880 (Collect Call) 02-3483-2829 (Toll Call) (Korean)
Latvia	371-6707-360(Latvian, Russian, English)
Lithuania	370 5278 6602(Italian, Russian, English )
Luxembourg	ThinkServer and ThinkStation: 352-360-385-343 ThinkCentre and ThinkPad: 352-360-385-222 (French)
Malaysia	1-800-88-0013 03-7724-8023 (Standard Charges Apply) (English)
Malta	356-21-445-566(English, Italian, Maltese Arabic)
Mexico	001-866-434-2080(Spanish)
Netherlands	020-513-3939 (Dutch)
New Zealand	0508-770-506 (English )
Nicaragua	001-800-220-2282 (Spanish)
Norway	8152-1550(Norwegian)
Panama	Lenovo Customer Support Center: 001-866-434(Toll-Free)(Spanish)
Peru	0-800-50-866 (OPCION 2) (Spanish)
Philippines	1-800-8908-6454 (GLOBE subscribers) 1-800-1441-0719 (PLDT subscribers) (Tagalog, English)
Poland	Laptops and tablets branded with logo Think: 48-22-273-9777 ThinkStation and ThinkServer: 48-22-878-6999 (Polish, English )

<b>Country or Region</b>	<b>Telephone Number</b>
Portugal	808-225-115 (Standard Charges Apply) (Portuguese)
Romania	4-021-224-4015(Romanian)
Russia	+7-499-705-6204 +7-495-240-8558 (Standard Charges Apply)(Russian)
Singapore	1-800-415-5529 6818-5315 (Standard Charges Apply) (English, Mandarin, Bahasa Malaysia)
Slovakia	ThinkStation and ThinkServer: 421-2-4954-5555
Slovenia	386-1-2005-60 (Slovenian)
Spain	34-917-147-833(Spanish)
Sri Lanka	+9477-7357-123 (Sumathi Information systems) (English)
Sweden	Warranty service and support: 077-117-1040 (Swedish)
Switzerland	Warranty service and support: 0800-55-54-54 (German, French, Italian)
Taiwan	0800-000-702 (Mandarin)
Thailand	001-800-4415-734 (+662) 787-3067 (Standard Charges Apply)(Thai, English)
Turkey	444-04-26 (Turkish)
United Kingdom	Standard warranty support: 03705-500-900 ( local rate) Standard warranty support: 08705-500-900(English)
United States	1-800-426-7378 (English)
Uruguay	000-411-005-6649 (Spanish)
Venezuela	0-800-100-2011 (Spanish)
Vietnam	120-11072 (Toll Free) 84-8-4458-1042 (Standard Charges Apply) (Vietnamese, English)

---

## Appendix B. Notices

Lenovo may not offer the products, services, or features discussed in this document in all countries. Consult your local Lenovo representative for information on the products and services currently available in your area. Any reference to a Lenovo product, program, or service is not intended to state or imply that only that Lenovo product, program, or service may be used. Any functionally equivalent product, program, or service that does not infringe any Lenovo intellectual property right may be used instead. However, it is the user's responsibility to evaluate and verify the operation of any other product, program, or service.

Lenovo may have patents or pending patent applications covering subject matter described in this document. The furnishing of this document does not give you any license to these patents. You can send license inquiries, in writing to:

*Lenovo (United States), Inc.  
1009 Think Place - Building One  
Morrisville, NC 27560  
U.S.A.  
Attention: Lenovo Director of Licensing*

LENOVO PROVIDES THIS PUBLICATION "AS IS" WITHOUT WARRANTY OF ANY KIND, EITHER EXPRESS OR IMPLIED, INCLUDING, BUT NOT LIMITED TO THE IMPLIED WARRANTIES OF NON-INFRINGEMENT, MERCHANTABILITY OR FITNESS FOR A PARTICULAR PURPOSE.

Some jurisdictions do not allow disclaimer of express or implied warranties in certain transactions, therefore, this statement may not apply to you.

This information could include technical inaccuracies or typographical errors. Changes are periodically made to the information herein; these changes will be incorporated in new editions of the publication. Lenovo may make improvements and/or changes in the product(s) and/or the program(s) described in this publication at any time without notice.

The products described in this document are not intended for use in implantation or other life support applications where malfunction may result in injury or death to persons. The information contained in this document does not affect or change Lenovo product specifications or warranties. Nothing in this document shall operate as an express or implied license or indemnity under the intellectual property rights of Lenovo or third parties. All information contained in this document was obtained from specific environments and presented as an illustration. The result obtained in other operating environments may vary.

Lenovo may use or distribute any of the information you supply in any way it believe appropriate without incurring any obligation to you.

Any references in this publication to non-Lenovo Web sites are provided for convenience only and do not in any manner serve as an endorsement of those Web sites. The materials at those Web sites are not part of the materials for this Lenovo product, and use of those Web sites is at your own risk.

Any performance data contained herein was determined in a controlled environment. Therefore, the result obtained in other operating environments may vary significantly. Some measurements may have been made on development-level systems and there is no guarantee that these measurements will be the same on generally available systems. Furthermore, some measurements may have been estimated through extrapolation. Actual results may vary. Users of this document should verify the applicable data for their specific environment.

---

## Recycling information

Lenovo encourages owners of information technology (IT) equipment to responsibly recycle their equipment when it is no longer needed. Lenovo offers a variety of programs and services to assist equipment owners in recycling their IT products. For information on recycling Lenovo products, go to:

<http://www.lenovo.com/recycling>

環境配慮に関して

本機器またはモニターの回収リサイクルについて

企業のお客様が、本機器が使用済みとなり廃棄される場合は、資源有効利用促進法の規定により、産業廃棄物として、地域を管轄する県知事あるいは、政令市長の許可を持った産業廃棄物処理業者に適正処理を委託する必要があります。また、弊社では資源有効利用促進法に基づき使用済みパソコンの回収および再利用・再資源化を行う「PC回収リサイクル・サービス」を提供しています。詳細は、<http://www.ibm.com/jp/pc/service/recycle/pcrecycle/> をご参照ください。

また、同法により、家庭で使用済みとなったパソコンのメーカー等による回収再資源化が2003年10月1日よりスタートしました。詳細は、<http://www.ibm.com/jp/pc/service/recycle/pcrecycle/> をご参照ください。

重金属を含む内部部品の廃棄処理について

本機器のプリント基板等には微量の重金属（鉛など）が使用されています。使用後は適切な処理を行うため、上記「本機器またはモニターの回収リサイクルについて」に従って廃棄してください。

### Collecting and recycling a disused Lenovo computer or monitor

If you are a company employee and need to dispose of a Lenovo computer or monitor that is the property of the company, you must do so in accordance with the Law for Promotion of Effective Utilization of Resources. Computers and monitors are categorized as industrial waste and should be properly disposed of by an industrial waste disposal contractor certified by a local government. In accordance with the Law for Promotion of Effective Utilization of Resources, Lenovo Japan provides, through its PC Collecting and Recycling Services, for the collecting, reuse, and recycling of disused computers and monitors. For details, visit the Lenovo Web site at [www.ibm.com/jp/pc/service/recycle/pcrecycle/](http://www.ibm.com/jp/pc/service/recycle/pcrecycle/). Pursuant to the Law for Promotion of Effective Utilization of Resources, the collecting and recycling of home-used computers and monitors by the manufacturer was begun on October 1, 2003. This service is provided free of charge for home-used computers sold after October 1, 2003. For details, visit the Lenovo Web site at [www.ibm.com/jp/pc/service/recycle/personal/](http://www.ibm.com/jp/pc/service/recycle/personal/).

### Disposing of Lenovo computer components

Some Lenovo computer products sold in Japan may have components that contain heavy metals or other environmental sensitive substances. To properly dispose of disused components, such as a printed circuit board or drive, use the methods described above for collecting and recycling a disused computer or monitor.

---

## Trademarks

The following terms are trademarks of Lenovo in the United States, other countries, or both:

- Lenovo
- The Lenovo logo
- ThinkCentre
- ThinkPad

---

ThinkVision  
Microsoft, Windows, and Windows NT are trademarks of the Microsoft group of companies.  
Other company, product, or service names may be trademarks or service marks of others.

---

## **Turkish statement of compliance**

The Lenovo product meets the requirements of the Republic of Turkey Directive on the Restriction of the Use of Certain Hazardous Substances in Electrical and Electronic Equipment (EEE).

Lenovo and the Lenovo logo are trademarks of Lenovo in the United States, other countries, or both.

---

## **Ukraine RoHS**

Цим підтверджуємо, що продукція Леново відповідає вимогам нормативних актів України, які обмежують вміст небезпечних речовин.

---

## **India RoHS**

RoHS compliant as per E-Waste(Management & Handling)Rules,2011.

---

## **Power cords and power adapters**

Use only the power cords and power adapters supplied by the product manufacturer. Do not use the ac power cord for other devices.