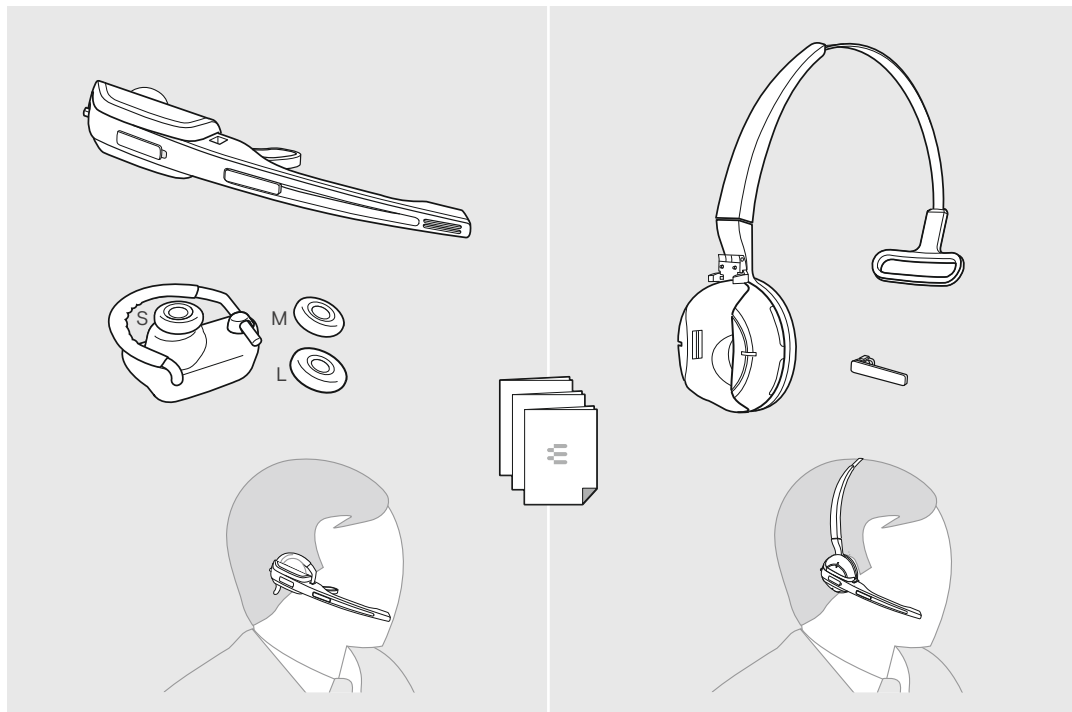


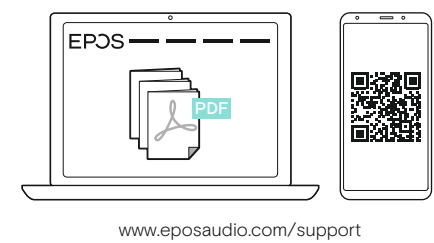
IMPACT SD Series
 IMPACT SD Office headset

EN Quick Guide ES Guía rápida
 FR Guide express PT Guia Rápido

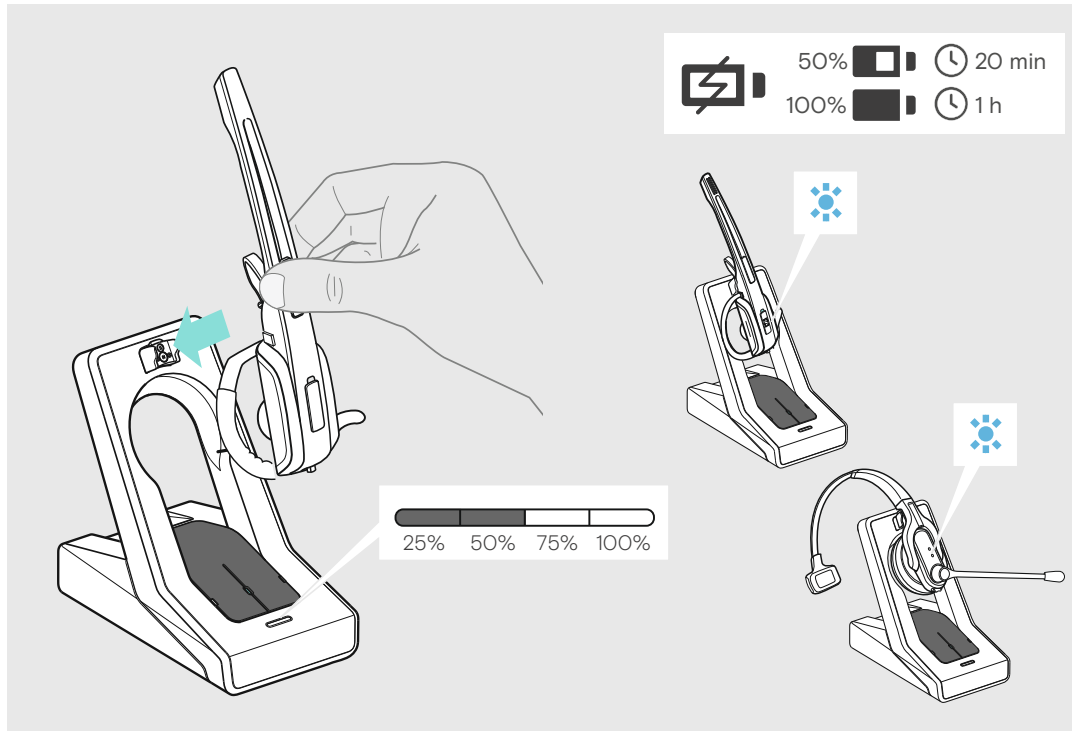
Model: SD 10 HS



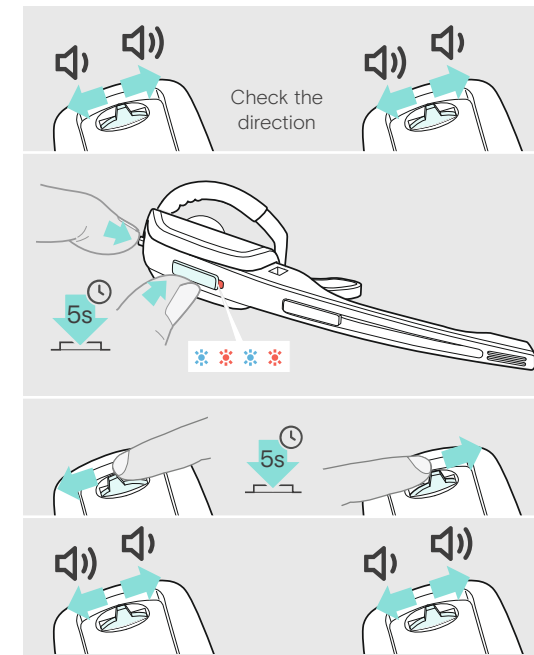
Charging the headset | Charger l'oreillette | Cargar el headset | Carregar os micro-auscultadores



www.eposaudio.com/support



Swapping the direction of the volume buttons |
 Permuter la fonction des touches Volume+ et Volume- |
 Cambiar la asignación de las teclas de volumen |
 Trocar a ocupação das teclas de volume

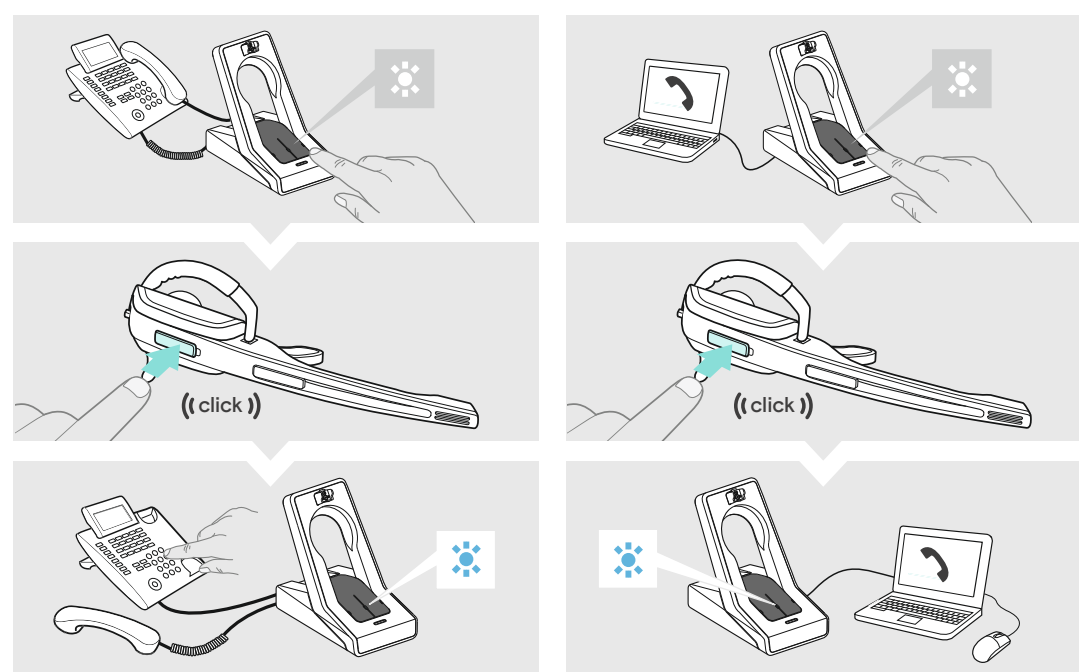
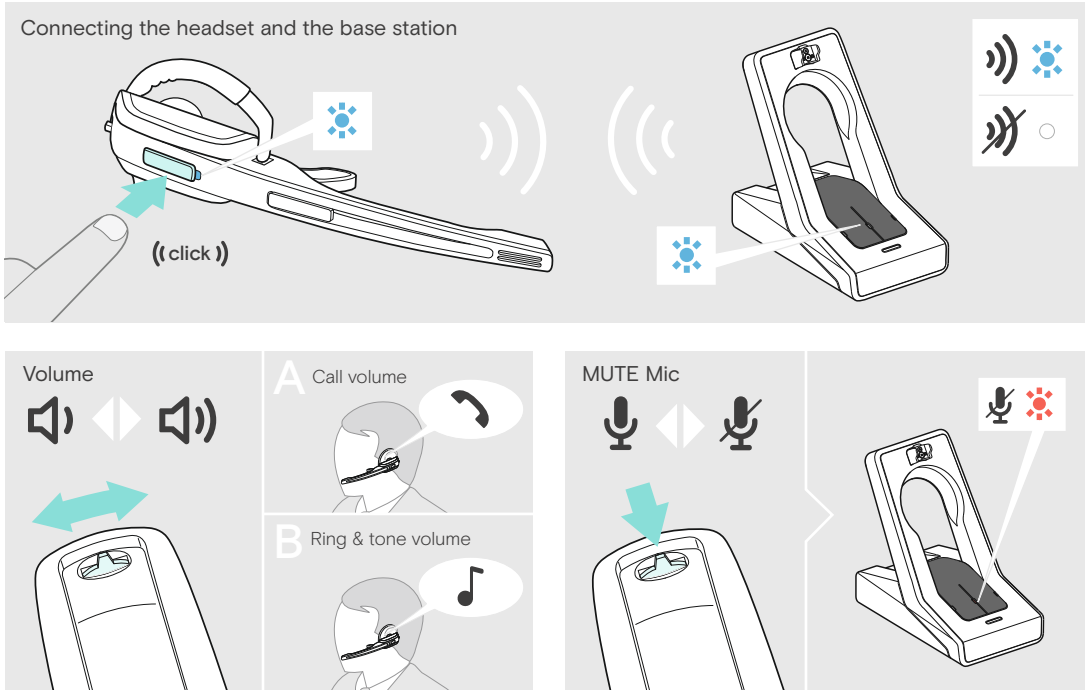


DSEA A/S
 Kongebakken 9, DK-2765 Smørum, Denmark
www.eposaudio.com

Printed in China, Publ. 06/20, 770-00074/A09

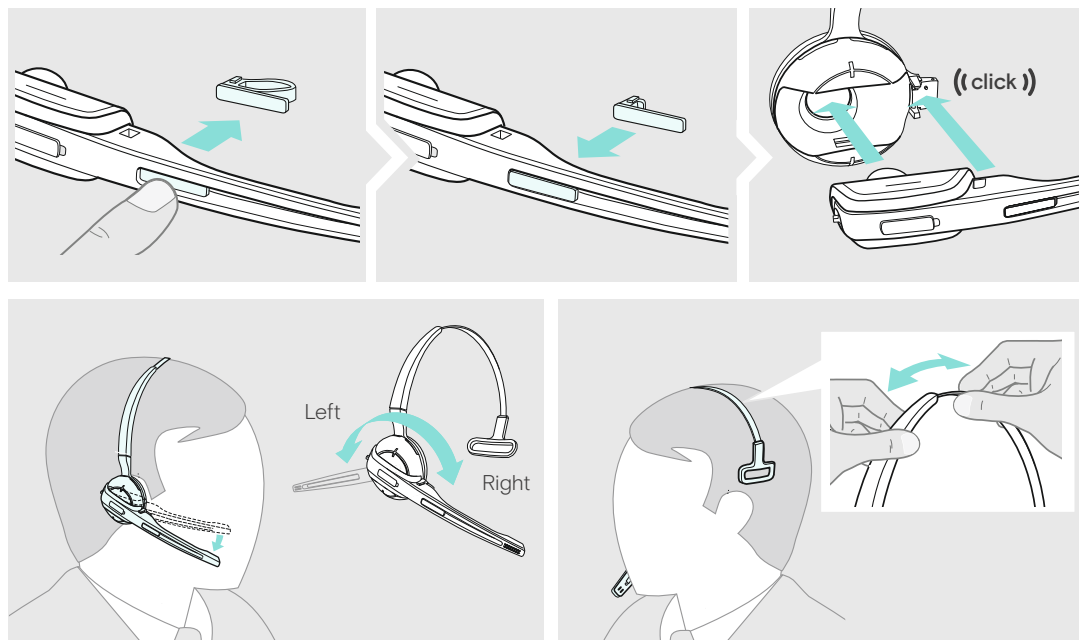
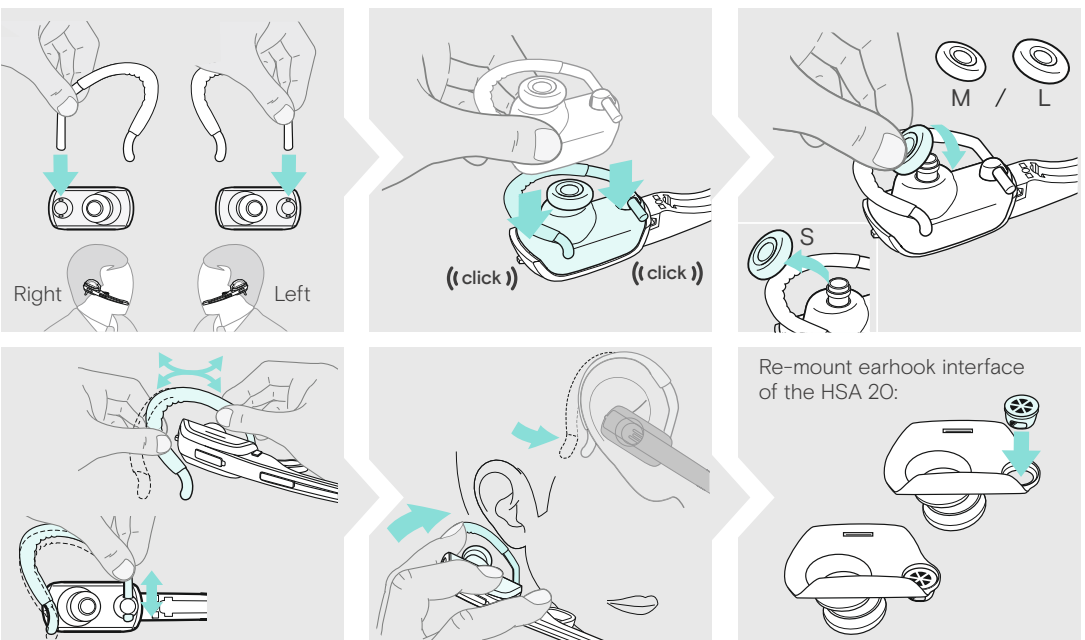
Using the headset | Utiliser l'oreillette | Utilizar el headset | Utilizar o auricular

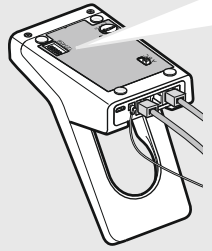
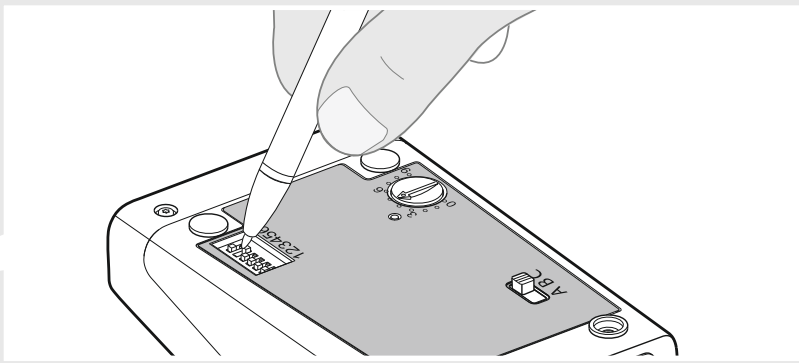
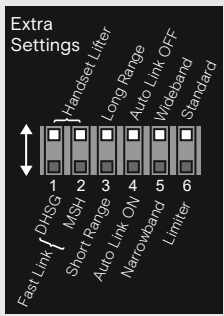
Making calls via the headset | Téléphoner avec l'oreillette | Telefonar mediante el headset |
 Fazer uma chamada telefónica através do micro-auscultador



Wearing the headset with the earhook | Porter l'oreillette avec le crochet d'oreille |
 Utilizar el headset con gancho de auricular | Utilizar o micro-auscultador com haste auricular

Wearing the headset with the headband | Porter l'oreillette avec l'arceau |
 Colocarse el headset con gancho de auricular | Colocar o micro-auscultador com aro de cabeça





 Manual operation Lifts/hangs up the handset manually or using the handset lifter (HSL 10 II).	 Manual link establishment When taking the headset out of the base station, you have to manually establish the wireless link between headset & base station.
 Electronic hook switch (DHSG standard) Call control via the headset system. For faster link establishment, see Fast Link.	 Automatic link establishment - Auto Link When taking the headset out of the base station, a wireless link is automatically established between headset and base station.
 Electronic hook switch (MSH standard) Call control via the headset system.	 Wideband audio transmission Automatic frequency adjustment of wideband & narrowband calls. Wideband audio transmission is e.g. supported by Skype & gives high speech quality. Battery life: 8 hours
 Fast Link for DHSG standard & HSL 10 II handset lifter Recommended for frequent callers. Fast link establishment without delay due to hidden link to the base station.	 Narrowband audio transmission Battery life: 12 hours
 Standard radio range	 Standard limitation
 Reduced radio range Use this setting in order to avoid interference with other DECT systems. Range of approx. 10 m indoors	 Limited volume (country specific) EU and US version: in compliance with Directive 2003/10/EC AU version: in compliance with Directive AS/ACIF G616:2006

Holding a conference call: Connecting the master headset & the guest headsets with a base station | Tenir une conférence téléphonique : Connecter l'oreillette maître et l'oreillette invitée à la station de base | Realizar una conferencia telefónica: Conexión del headset maestro y de los headsets invitados con la estación base | Realizar uma chamada em conferência: Ligar o micro-auscultador mestre e os micro-auscultadores secundários à base

New MASTER headset

GUEST headset 1-3

Ready for conference call: Master headset & Guest headsets connected to the base station

End a conference call

Leaving the DECT range | Sortir de la portée DECT | Salir del rango DECT | Sair do alcance DECT

Automatic link establishment | Établissement automatique d'une liaison | Establecimiento de conexión automática | Ligaçãõ automática

Replacing the ear pad | Remplacer le coussinet d'oreille | Cambiar las almohadillas para las orejas | Substituir as almofadas

Charging several headsets simultaneously | Charger plusieurs oreillettes simultanément | Cargar simultaneamente varios headsets | Carregar, simultaneamente, vários micro-auscultadores

Wide range: 55 m

Low range: 10 m | offices with high density of DECT products or headsets

Please check the Instruction manual for more information.

DIP switch 4

SD Office - HS
SD Pro1 - HS
SD Pro2 - HS

Detailed information / Accessories | Informations détaillées / Accessoires | Información detallada / Accesorios disponibles | Informações mais pormenorizadas/Acessório disponível

For easy setup, configuration and softphone call control settings download EPOS Connect on www.eposaudio.com/connect

For Compatibility guide go to www.eposaudio.com/compatibility

For Instruction manual go to www.eposaudio.com/support