



# USB-C Quad Hybrid 4K Video Docking Station with PD

## User Manual



04-1364A

P/N: JU-DK0Q11-S1

## Table of Contents

• Features	3
• Package contents	4
• System requirements	4
• What is USB 3.1 Type-C?	5
• USB Power Delivery	6
• Front View	7
• Rear View	8
• DisplayLink Manager installation	10
• Allow “DisplayLink” app on Mac	12
• Enable “Screen Recording”	13
• 5K Display	14
• Q & A	15
• Support	16

## Features

- Support USB 10G speed connection between host and docking station. (USB 10G host required)
- Support one Type-A USB 10G speed port
- Support three Type-A USB 5G speed port
- Support four DisplayLink video output simultaneously.
- DisplayLink output support HDMI or DP.
- DisplayLink video output resolution up to 4K 3840x2160p@60Hz
- DisplayLink video output support PCM 2.0ch and 5.1ch audio
- Support one USB-C PD charging port 30W max (for smartphone or tablet charging)
- Support 2.5G Ethernet backward 10/100/1000Mbps
- Support SD 4.0 SD/MicroSD (TF) card reader
- Support 3.5mm Headset jack
- Support laptop PD 3.0 charging, 100W max
- Support Security Slot

## Package contents

- Quad Hybrid 4K Video Docking Station
- Power adapter DC 20V / 9A (180W)
- 2-in-1 USB-C to C cable with USB-A converter and cable holder (20V/5A)  
(Type-A host not support PD charging)
- User Manual

## System requirements

- Host computer system with an available USB Type-C (Thunderbolt 3 compatible) Port which supports USB 10Gbps and Power Delivery
- CPU Processor: Core i7 or above
- Windows® 10 / 8 .1/ 8 / 7 (32/64 bit)
- Mac OS X® 10.14, 10.15 to 11.X, 12.X

Operating system requirements are subject to change. For the latest requirements, please visit [www.siig.com](http://www.siig.com) and search JU-DK0Q11-1

## What is USB 3.1 Type-C?

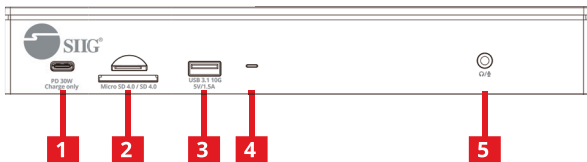
- USB 3.1 Type-C is a new generation connector interface of USB 3.1 standard, that is capable to support for the following:
- USB 3.1 Gen 1 support up to 5 Gbps data transfer rate and USB 3.1 Gen 2 support up to 10Gbps data transfer rate
- Bi-directional power delivery up to 100W, if both the USB host connection and the device support it
- DP Alternate modes, the signal is based on the DisplayPort version to deliver different speeds.

Not all USB-C ports support the full functionality of the USB Type-C standard. For more information, please refer to the information provided by the manufacturers.

## USB Power Delivery

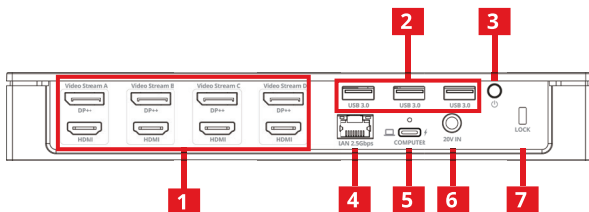
This docking station supports USB Power Delivery, which means it delivers up to 100 watts of power to your connected host laptop (your laptop's USB-C port must support power delivery). USB Power Delivery is a specification that allows power to be sent over a USB-C or Thunderbolt 3 cable that supports the specification. Ensure your USB-C cable can support PD 100W transfer or use the included USB-C cable.

## Front View



- 1. USB-C PD charging port:**  
Support PD 30W charging for smartphone or tablet (charging only)
- 2. SD/MicroSD (TF) card reader:**  
(SD 4.0 UHS-II), can use simultaneously
- 3. USB 3.1 10G Type-A port:**  
Support USB UASP mode, 10Gbps speed and 5V/1.5A power output.  
connect for USB peripherals  
(Support USB BC 1.2 charging)
- 4. Power LED:**
- 5. 3.5mm headset jack:**  
connect to headset  
(include audio and microphone)

## Rear View



- 1. DisplayLink video output A,B,C,D**  
 This video output via DisplayLink chip  
 Select DP or HDMI connect to display,  
 they can't output simultaneously.  
 Resolution up to 3840x2160p@60Hz
- 2. USB 3.0 5G ports:**  
 USB 3.0 Type-A port support USB  
 UASP mode, 5Gbps speed and 5V/900mA  
 power output.  
 connect for USB peripherals
- 3. Power Switch:**
- 4. RJ-45 2.5 Gigabit Ethernet port**  
 connect to Ethernet Router or Switch  
 (Support 2.5G/1000/100/10 Mbps)



## 5. **USB-C host:**

Connect to USB-C port which supports USB 10Gbps and Power Delivery.

PD charging 100W

(Please use include USB C to C cable)

Not all USB-C ports support the full functionality of the USB Type-C standard.

Ensure that your host USB-C port supports all functions

## 6. **Power jack:**

Connect the Power Adapter to the DC Power Input Port on the Docking Station. DC 20V/9A, 180W

## 7. **Security Slot:**

Connect a Locking Device to the Lock Slot.

Note: Follow the manufacturer's instructions when installing your Locking Device.

## DisplayLink Manager installation

- “DisplayLink Manager” software is required
  - Without DisplayLink Manager install, DisplayLink video output can not output video.
  - Please download the “DisplayLink Manager” from SIIG website or DisplayLink website
1. Follow the screen instructions to complete the installation and restart your PC/NB

(For Mac OS® 10.13.3 and the above, the system would display a “System Extension Blocked” warning while driver installing. Please allow “DisplayLink Corp” at Security & Privacy setting. )

2. For DisplayLink configuration, please search & refer to Support document on DisplayLink website  
<https://support.displaylink.com/>

## **Windows**

How to configure DisplayLink displays on Windows

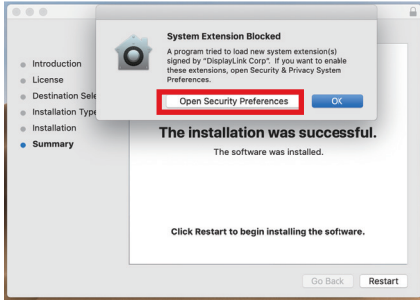
## **MAC**

How to configure DisplayLink displays on Mac OS X

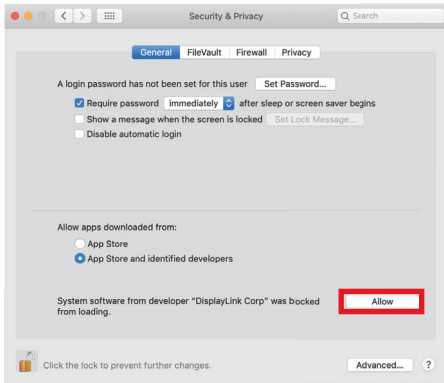
DisplayLink Manager App for macOS  
Introduction, Installation & Scope

# Allow “DisplayLink” app on Mac

Open Security Preference while driver installing

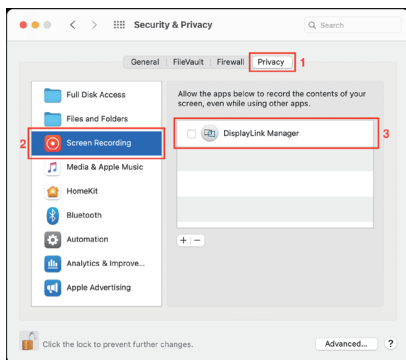


## Allow “DisplayLink Corp” app

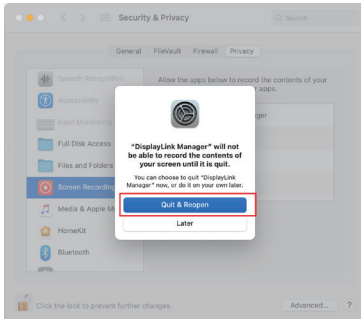


## Enable “Screen Recording”

macOS Catalina 10.15 requires the user to permit "Screen Recording" in order for DisplayLink devices to work properly.



- Because the new permission will only be active the next time you start the application, macOS will invite you to “Quit & Reopen”. In Catalina 10.15.x please select “Quit Now”. Please accept.

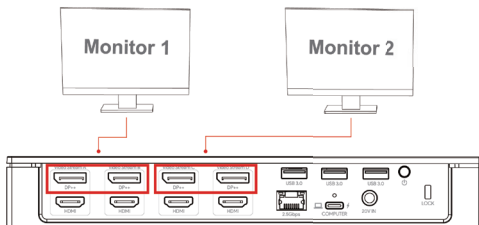


## 5K Display

Connect DisplayPort A+B or C+D to the 5K Display can output the 5K resolution. Up to two 5K display max.

### 5K Display

Correct way to connect 5K monitors



## Q & A

- **Why my laptop can't get 100W charging?**

It depends on laptop charging spec, not all laptops need 100W input.

- **Why DisplayLink output has no video?**

Ensure the DisplayLink software have installed. Every output has DP or HDMI output, but can only select one output at once.

- **Why play video on DisplayLink output will have latency or cause CPU heavy loading ?**

DisplayLink outputs are kind of USB video extend via DisplayLink chip which needs extra CPU computing. So DisplayLink output will not fit to play video.

**Dear Valued Customer**

**WE REALLY  
APPRECIATE  
YOUR PURCHASE**

***~thank you~***

**Support**

For more info or tech support  
**<http://www.siig.com/support>**