



# Protective Case with Built-In 360 Degree Rotatable Grip Kickstand

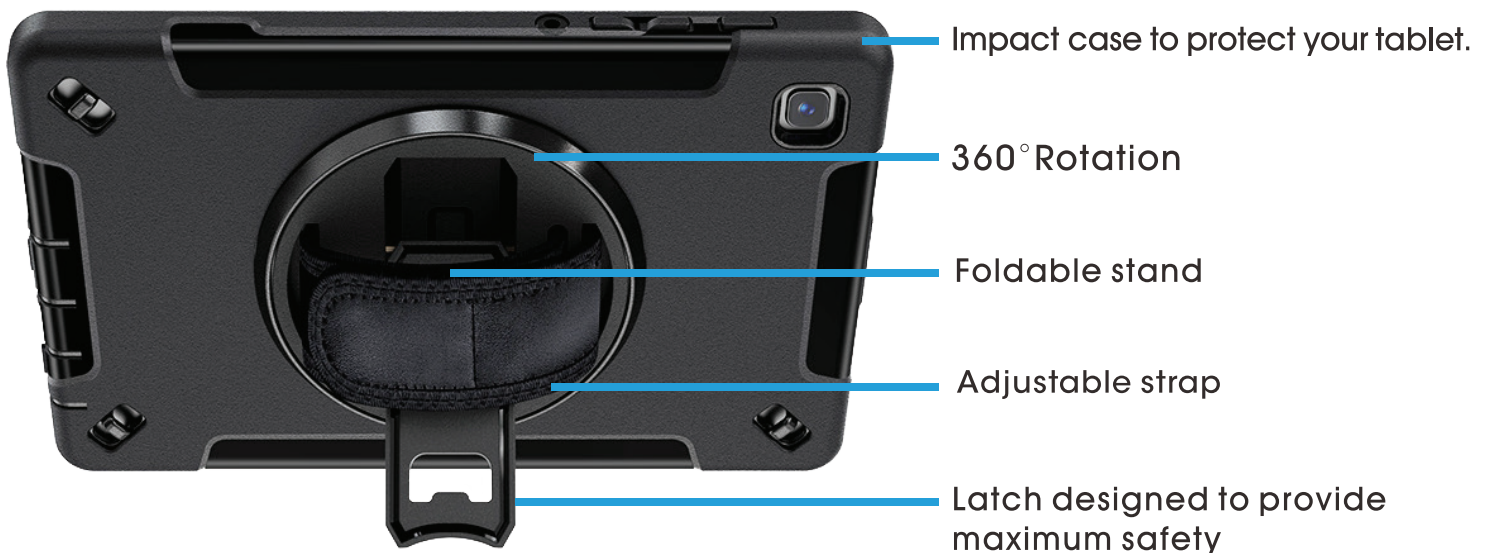
For Samsung A7 Lite

PAD-PCGKA7L

INSTRUCTION - MANUAL



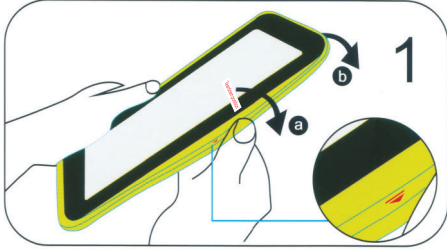
## Features



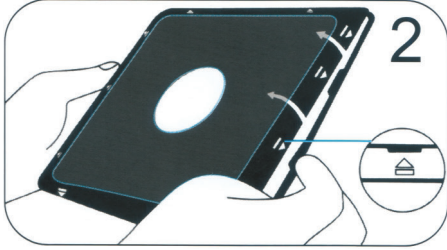
# INSTRUCTIONS

If your tablet has a previously installed screen protector, please remove it before continuing.

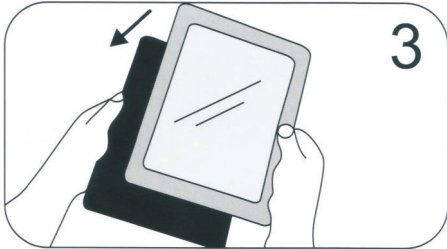
## 1. How to insert tablet into case.



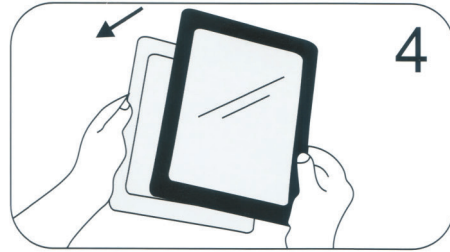
1 Remove the external silicone sleeve by peeling it away from the internal hard case



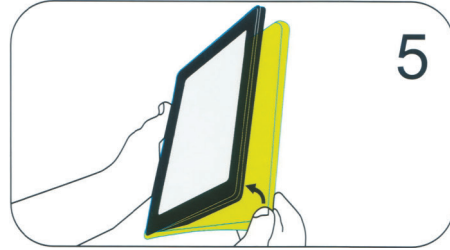
2 Gently apply pressure to the small clips (as indicated by the arrows) and unclip all four sides. Once all the sides are unclipped, the internal hard case will open.



3 Insert the iPad into the rear cover.

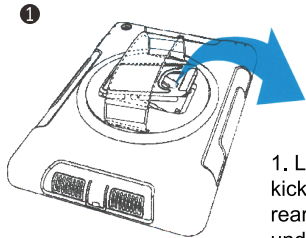


4 Once the iPad is inside the rear cover, place the internal front cover on top and gently clip all four sides into position.

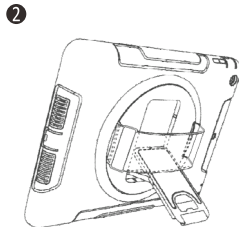


5 Reinstall the external silicone rubber sleeve.

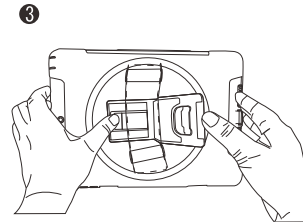
## 2. How to flip out kickstand.



1. Locate kickstand at case rear and fold out underneath strap.



2. Display tablet at desired viewing angle.



3. Press kickstand back in to return to handheld mode.

## 3. How to use in handheld.



1. Identify velcro handstrap and adjust to fitted size. Insert your hand as shown and you're ready for mobile setup.