

User Manual

A5

Mid Tower



A3

Mini Tower



Product Video Information



A3 / A5 Product Video



A3 / A5 Installation Guide Video

Table of Contents

Product Story	04
Specifications	05
Package Contents	06
Case Structure	07
Installation Guide	08
Notices and Warranty	12

Product Story

The **A3** and **A5** are direct descendants of the notorious A1 Series.

While the A1 Series is an excellent option for mini-ITX systems, a common request is to have a larger variant. Cue in the A3 and A5! It's an all-new experience that offers polished aesthetics, refined internal layout and enhanced thermal performance, while maintaining its desired compact structure.



Specifications

A3 / A5

Model	A3	A5
Model Number	IW-CS-A3BLK-1AM120S	IW-CS-A5BLK-1AM120S
Colors	Black	Black
Case Type	Mini Tower	Mid Tower
Materials	SECC, Tempered Glass, Aluminium, PC-ABS	
M/B Compatibility	Micro-ATX, Mini-ITX	12" x 11" E-ATX, ATX, Micro-ATX, Mini-ITX
Expansion Slots	4 x PCI-E	7 x PCI-E
Maximum Compatibility	VGA Card Length: 340 mm CPU Heatsink Height: 162 mm	
I/O Ports	1 x USB 3.2 Gen 2x2 Type-C 2 x USB 3.2 Gen 1 HD Audio Combo (CTIA – SPK/Mic)	
Internal Drive Bays	2 x 3.5" / 2.5" 1 x 2.5"	2 x 3.5" / 2.5" 2 x 2.5"
Thermal Solution Compatibility	Air Cooling Fans: Top: 2 x 120 mm Rear: 1 x 120 mm Bottom: 2 x 120 mm (1 InWin Mercury AM120S Fan Included) Water Cooling Radiator: Top: 1 x 240 mm	
* Number of fans pre-installed may vary based on different regions.		
Power Supply Compatibility	PSII: ATX12V - Length between 140 - 200 mm (PSUs longer than 170 mm will need to build with GPUs 280 mm or shorter)	
Product Dimensions (L x W x H)	401 x 215 x 347 mm 15.8 x 8.5 x 13.7"	399 x 215 x 407 mm 15.7 x 8.5 x 16"
Package Dimensions (L x W x H)	473 x 277 x 422 mm 18.6 x 10.9 x 16.6"	473 x 277 x 483 mm 18.6 x 10.9 x 19"
Net Weight	5.24 kg / 11.55 lbs	5.86 kg / 12.92 lbs
Gross Weight	6.25 kg / 13.78 lbs	6.94 kg / 15.30 lbs

* InWin's products comply with RoHS regulations.

* Specifications may vary based on different regions.



Package Contents

A3	A5
	
Mercury AM120S	Accessories Bag
	

Hexagon Head Screws x 17	Motherboard Stand-Offs x 2	Motherboard Stand-off Socket x 1
		
2.5" HDD Screws x 16	3.5" HDD Screws x 8	Cable Ties x 5
		
PWM Fan Extension Cable 500 mm x 1	ARGB Extension Cable 500 mm x 1	QR Code Card
		
GPU Support Holder x 1		
		

Case Structure



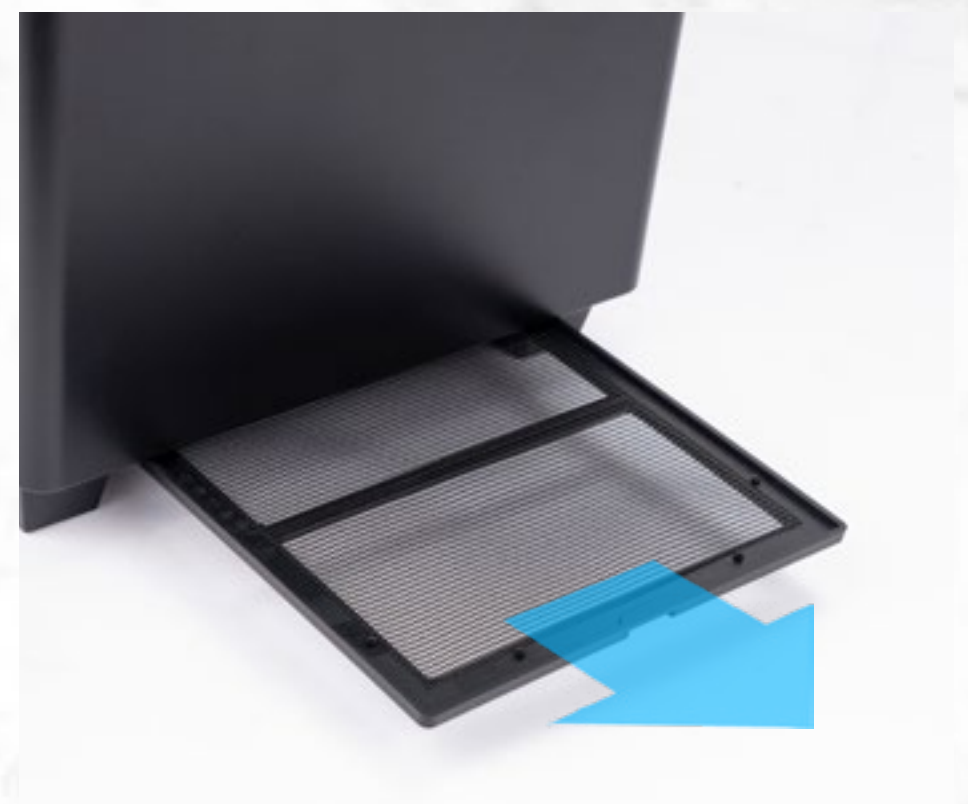
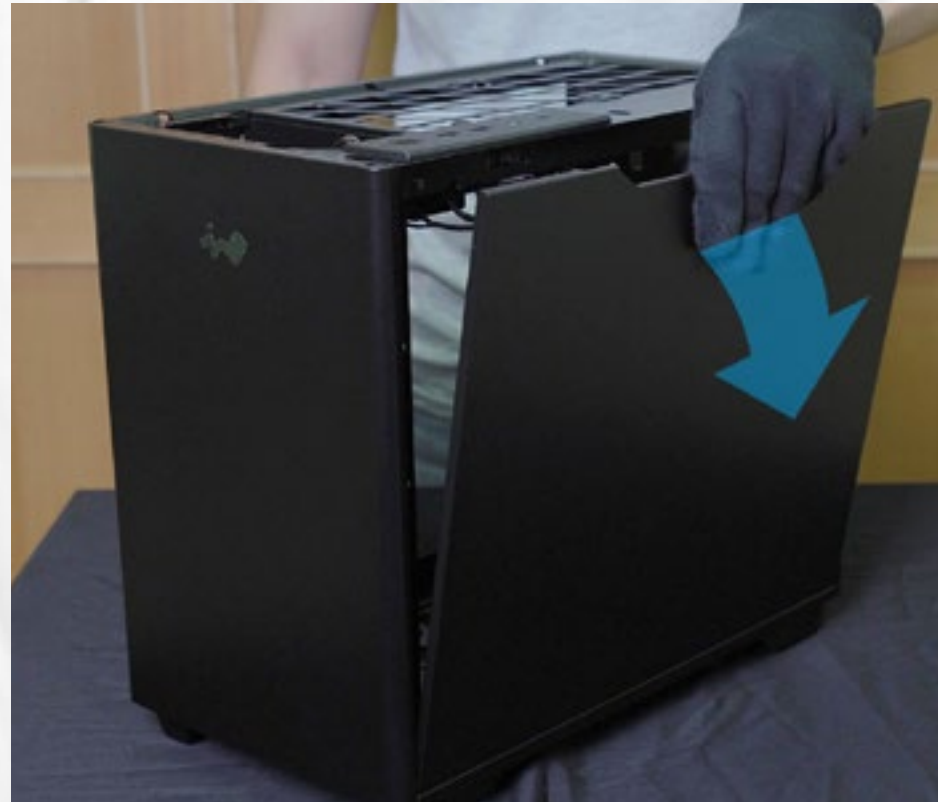
1	Power/HDD LED	11	Top Fan/Radiator Mounting Area
2	Power Button	12	Motherboard Mounting Area
3	USB 3.2 Gen 1	13	PCI-E Expansion Slots
4	HD Audio Combo (CTIA – SPK/Mic)	14	PCI-E Supporting Mounting Hole
5	USB 3.2 Gen 2x2 Type-C	15	Shock-Proof Stands
6	Power Supply Mounting Area	16	2.5" Drive Bays
7	PSU Supporting Mounting Hole	17	3.5"/2.5" Drive Bays
8	PSU Support Holder	18	CPU Cooler Installation Cut-Out Hole
9	Rear Fan Mounting Area	19	Fan Dust Filter
10	Bottom Fan Mounting Area		

Installation Guide

* Please follow the related chapters to assemble.

* Please use original provided accessories to avoid damage to the product.

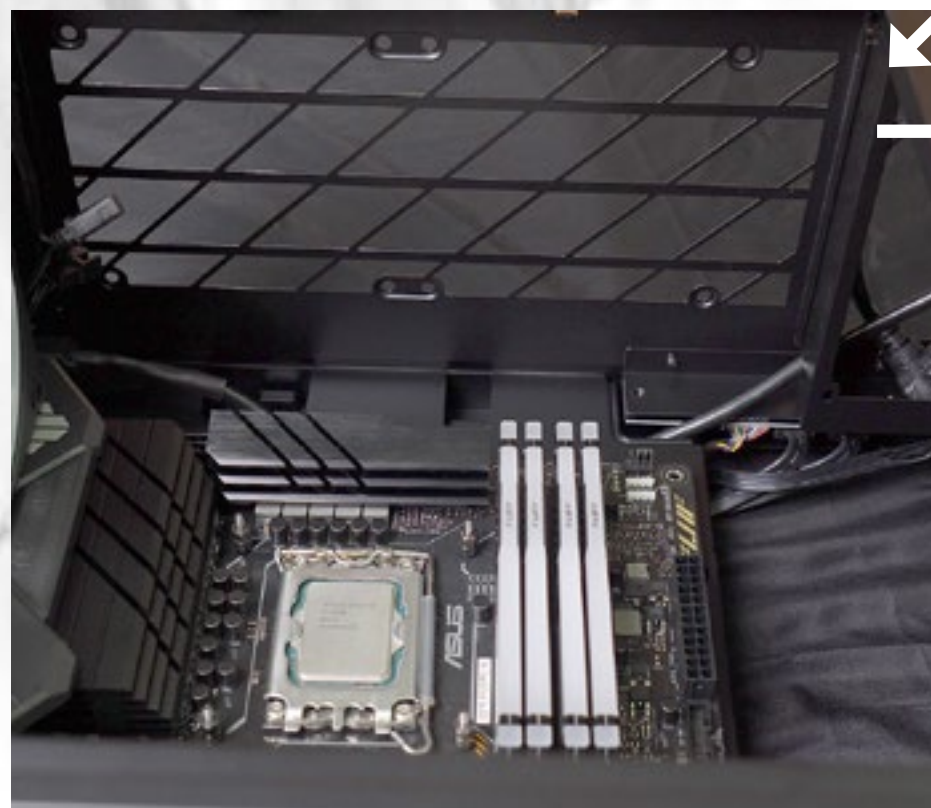
1. To Open All Panels



2. Motherboard Installation

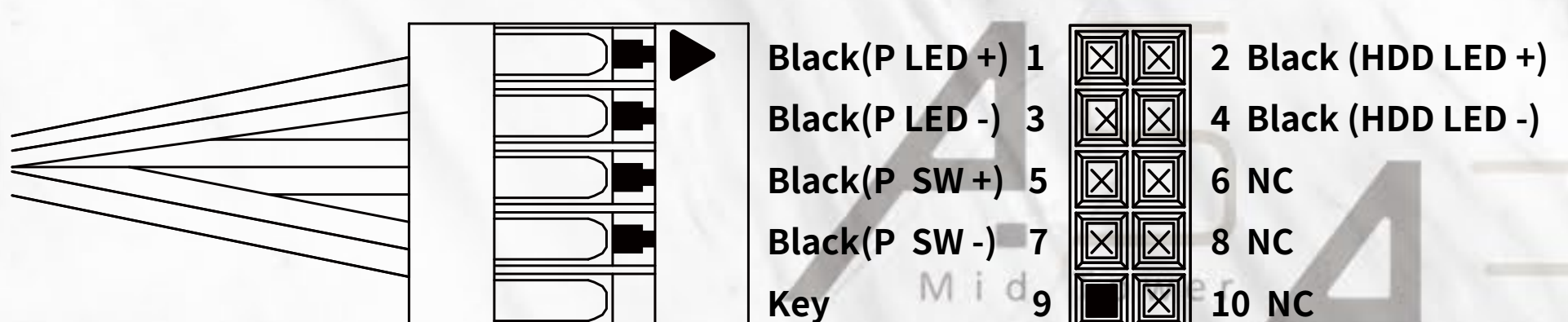
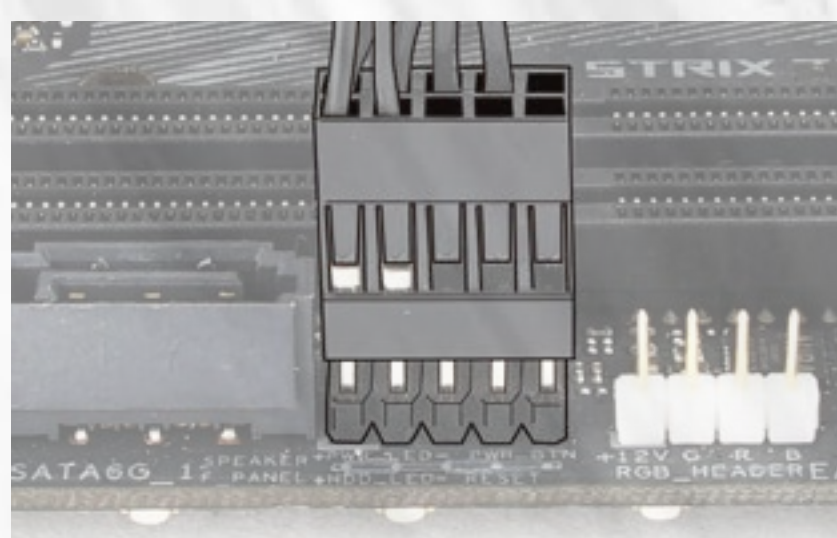
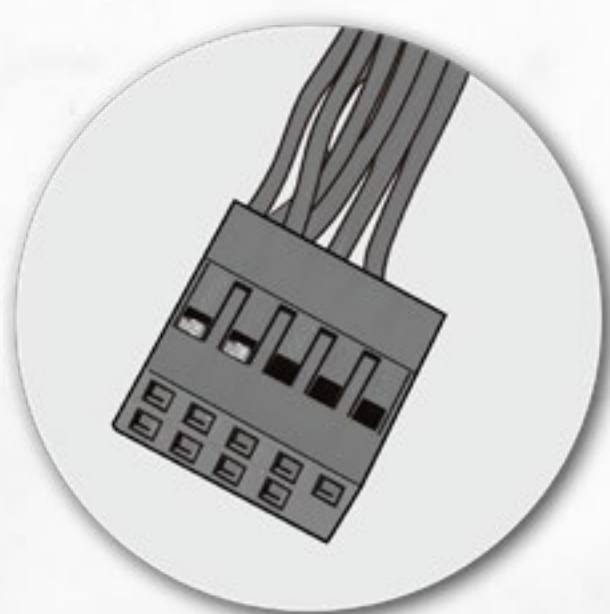
Parts Required:

Motherboard Stand-Offs, Motherboard Stand-Off Socket, Hexagon Head Screws



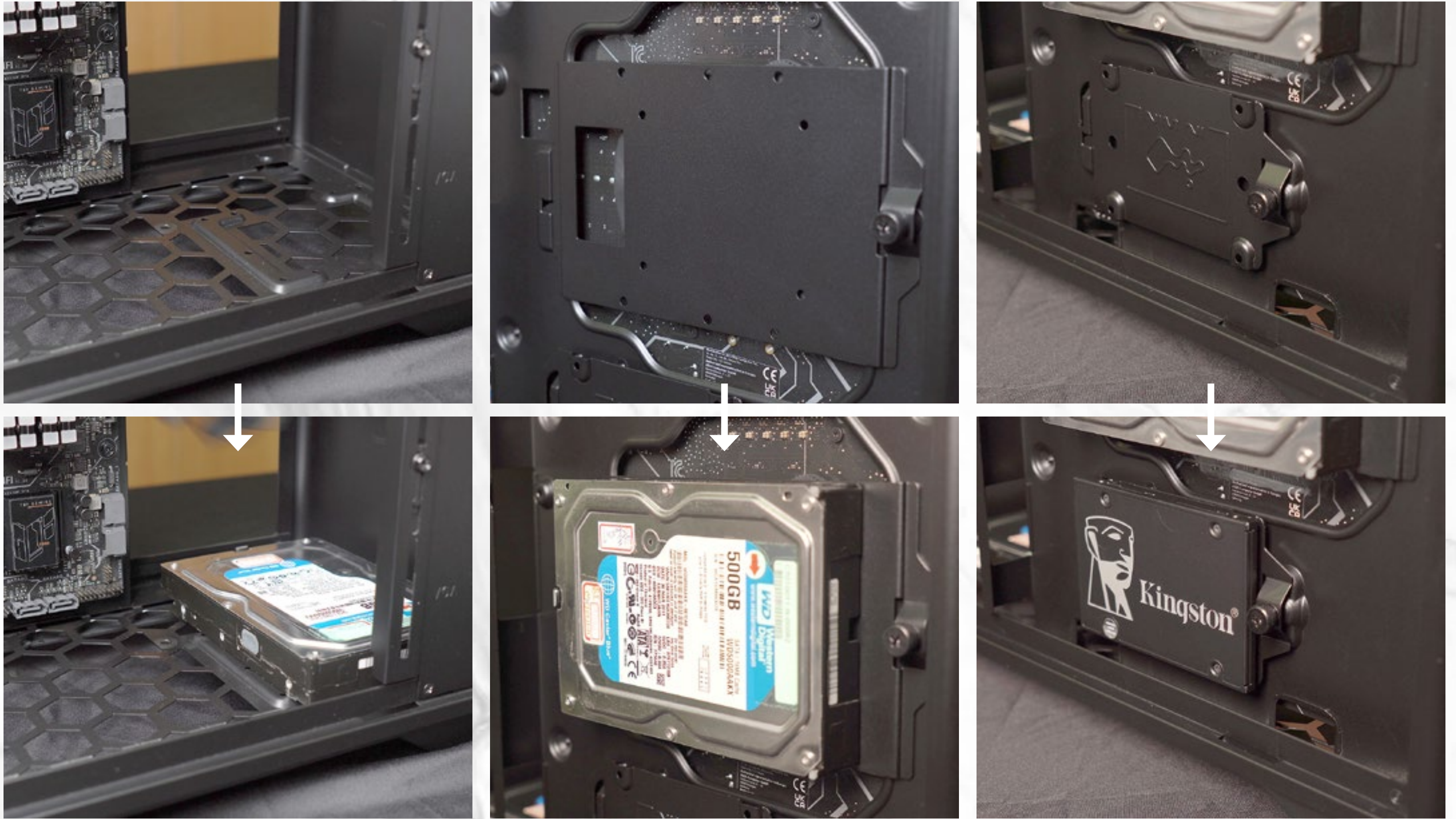
3. Connection Cables

Power Switch/HDD LED Connector x 1



4. 2.5"/ 3.5" Drive Bay Installation

Parts Required: 2.5"/ 3.5" HDD Screws



5. Fan/Liquid Cooling Radiator Installation



6. Expansion Card Installation

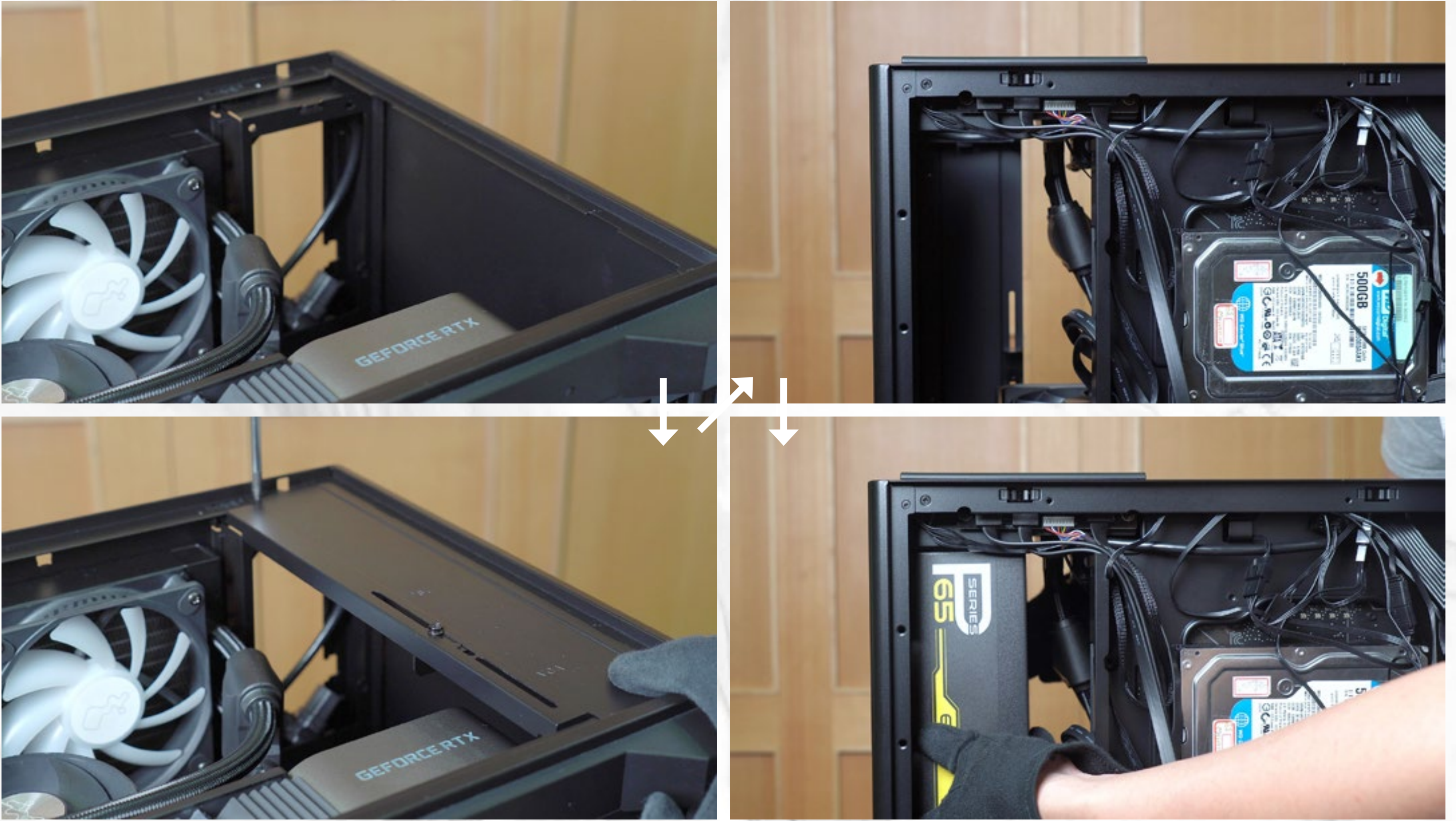
Parts Required: Hexagon Head Screws, PSU Support Holder



Note: Use the GPU Support Holder to secure it in place.

7. Power Supply Installation

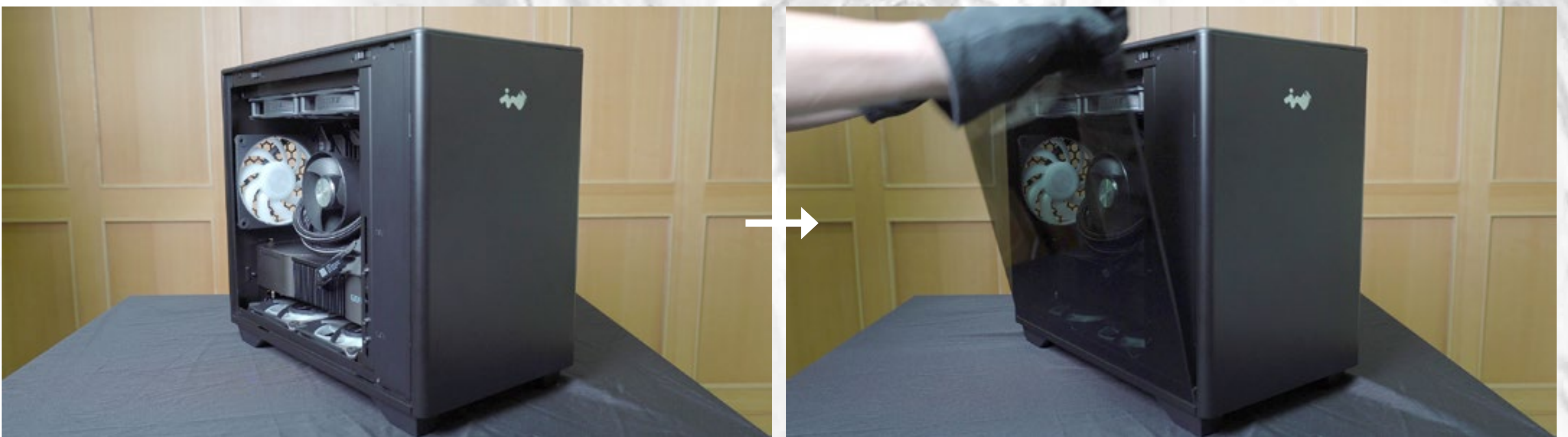
Parts Required: Hexagon Head Screws, PSU Support Holder



Note: Use the PSU support holder to secure it in place.

8. Complete Installation

Parts Required: Cable Ties



Notices and Warranty

■ Notices

1. Install in accordance with the user manual's instructions and safety warnings. Incorrect installation may result in burning out the motherboard and other system components.
2. To avoid damaging any circuits, please make sure the power is off before assembling any internal device.
3. When installing the computer components, please use the antistatic precautions to prevent ESD (electrostatic discharge) damage. This can cause injury to the installer and/or damage to the machine.
4. When the side panels are opened, please do not put your hands or other objects into the fans or other parts in operation. And please make sure to keep away from children and pets.
5. Please avoid unnecessary insertions and extractions to the addressable cable as it may damage the pins.
6. To avoid any damages, please do not use this product for any other purpose than its intended use.
7. Any modifications may damage the product.
8. Please remove all internal devices before shipping or moving. (Including power supply, hard drives, motherboard, CPU, etc.)
9. Keep this product away from areas with high temperatures such as: heat dissipation machines, air conditioners or other machines which may generate high temperatures.
10. Please use only this product's exclusively supplied cables. Other cables may not be compatible and could cause serious damage to your system and power supply.
11. If your fan does not operate properly, please follow the instructions below:
 - 1) Please check your system's power.
 - 2) Please make sure all connectors are connected properly.
 - 3) For more technical support, please visit the InWin Forum at: <http://forum.in-win.com>

■ Warranty

1. For more detailed warranty information, please visit the InWin retail website at www.in-win.com
2. The actual product is subject to change without prior notice. In Win Development Inc. reserves the right to make any final modifications.

A5

Mid Tower



A3

Mini Tower



CONTEMPORARY & INNOVATIVE
www.in-win.com