



TCM008



# Table of Contents

<b>Chapter I: Overview</b> .....	<b>2</b>
1.1 <i>Safety Information</i> .....	2
1.2 <i>Electromagnetic Compatibility Statement</i> .....	4
<b>Chapter II: Installation Guide</b> .....	<b>5</b>
2.1 <i>Appearance of TCM008 Touch Screen Monitor</i> .....	5
2.2 <i>The Rear Panel I/O Signs and Description</i> .....	6
<b>Chapter III: Instructions for Installation</b> .....	<b>7</b>
3.1 <i>Touch Screen Driver Installation</i> .....	7
3.2 <i>Touch Screen Test</i> .....	8
3.3 <i>Touch Screen update</i> .....	9
<b>Chapter IV: Common Faults and Exclusion</b> .....	<b>10</b>

# Chapter I: Overview

Dear customers:

Thank you for purchasing the 3nStar products; we are committed to continuously maintaining the product quality and providing better after-sales service. To be able to take full advantage of our devices, we recommend you read through this manual before the driver installation.

## 1.1 Safety Information

- TCM008 is fully compliant with the relevant requirements of the national standard GB/4943-2001 IT equipment security.
- Make sure the electricity meets power requirements such as voltage and frequency before installation. Also, make sure the grounding of the power outlet is running properly.
- A lightning strike may damage the product, the power cable, unplug the network cable, or any other conductors during lightning storms.
- Do not unplug the components and connections (except for the USB device) when the power is on.
- Do not open the cabinet of the product with help from a non-professional technician.
- Do not leave any item or liquid inside the product. Also, do not place any objects into the ventilation holes, as it may cause a short-circuit in the internal components and may cause fire or electric shock.

- In accordance with the relevant explanation in national standards GB/T9813-2000 microcomputers general specification, after the computer is below the temperature of 10°C of environment storage, please place the machine in room temperature (10-35°C) conditions for more than two hours to avoid damage from low temperature. In the meantime, please do not remove the packaging and allow the computer to restore the natural temperature. Also, try to avoid the computer heating up too fast since it can cause the computer to generate the occurrence of frost and condensation that might bring electrical damage.
- Keep strict compliance with the electrical appliance standard.
- Safe use voltage range: 100V ~ 240V & 50Hz/60Hz.
- Verify that the power outlet is available to connect to a reliable ground.
- Keep the device clean, dry, and away from dust, moisture, and direct sunlight.
- Do not share the same power outlet with high-power consumption electrical devices. Keep distance from high level magnetic interference.
- Power off the monitor after use to be able to last longer.
- Do not use sharp objects to draw or cut the touch screen to ensure it's used normally.
- Switch off the power supply before you plug / unplug the communication cable or connect it to an external device.
- Non-professional and technical personnel are not allowed to open the machine, otherwise there may be consequences.

**If the following occur:**

- Liquid penetrated the body of the monitor
- Monitor accidental damage
- Monitor producing a burning smell
- Monitor showing sudden abnormalities

Disconnect the power supply immediately. Then, unplug the power cord and contact a qualified service technician to fix the problem.

## **1.2 Electromagnetic Compatibility Statement**

- TCM008 is fully compliant with the relevant requirements of the national standards (GB/9254-1998) of the limits and measurement methods of radio disturbance characteristics of information technology equipment for Class B products.
- TCM008 is fully compliant with the relevant requirements of the People's Republic of China's national standards of (GB/17625.1-2003) Electromagnetic Compatibility Limits for harmonic current emission limits for Class B products.

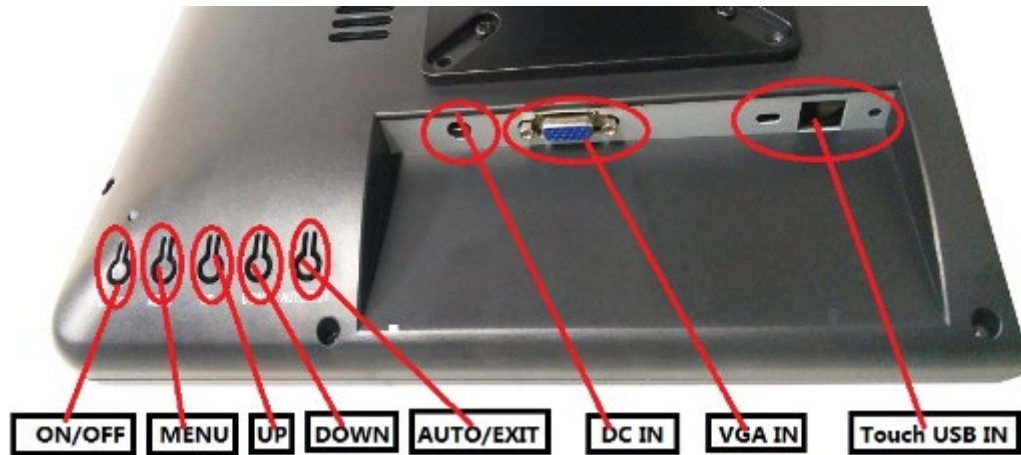
# Chapter II: Installation Guide

## 2.1 Appearance of TCM008 Touch Screen Monitor



## 2.2 The Rear Panel I/O Signs and Description

A row of external device connection interfaces is located at the rear bottom panel of the monitor, such as: power outlet, Line in, VGA and USB interface. The details are shown as follows:



TOUCH USB: this is connected to PC's USB Ports; used for touch function

DC in: 12V DC in; power supply for the touch monitor

VGA in: this is connected to PC's VGA output port

### Key functions:

Menu: Press this button to get a pop-up OSD menu, and enter the con function highlighted while the OSD menu is activated.

ON/OFF: Turn the LCD power on and off when the power in on. When the light is showing green, stand by and it will turn red.

UP: Press this button to increase the value of the function selected or move to the previous function.

Down: Press this button to decrease the value of the function selected or move to the previous function.

AUTO/EXIT: Press this button to apply the monitor setting automatically and Exit the OSD menu.

TCM008 touch screen monitor is using the manual handle design which can be adjusted within the range of 0 to 90 degrees to make the operation more humane.

# Chapter III: Instructions for Installation

## 3.1 Touch Screen Driver Installation

In Windows 7 (above) and Linux 2.6.30(above), there is no need to install the driver for the touch screen.

Windows XP or 2000 is not supported Multitouch.

Driver file location:

/driver/ILITouch/iUniTouch\_Tool\_Setup\_V1.2.5.2.exe

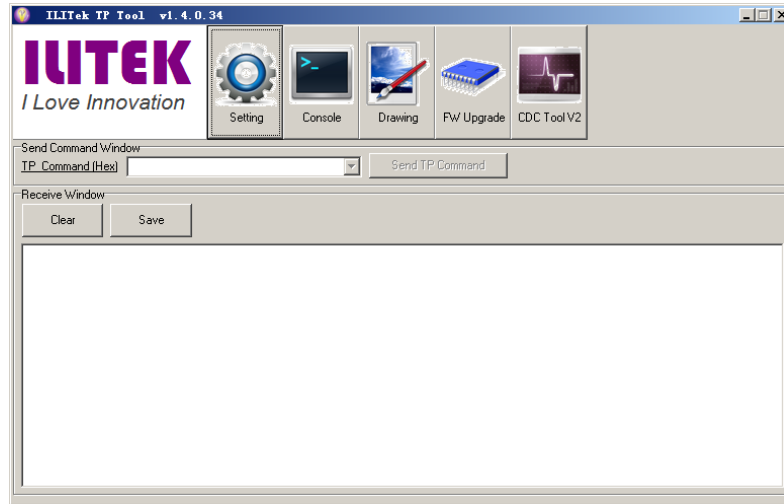
Installation Instructions:

/driver/ILITouch/installation 1.2.5.2.pdf

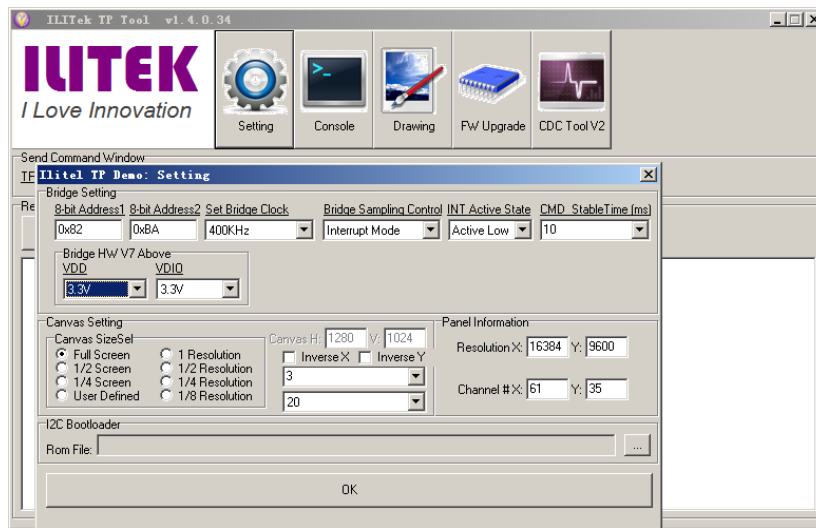


### 3.2 Touch Screen Test

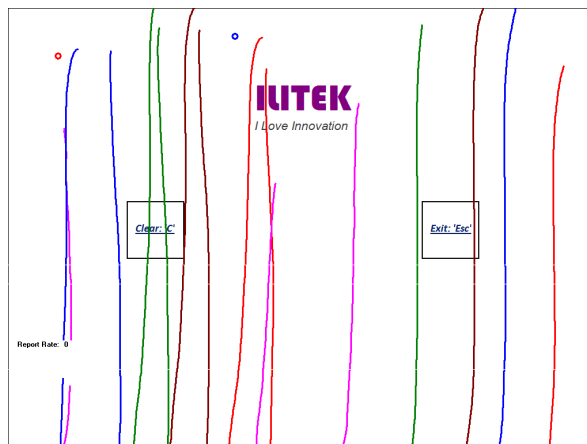
Open the CD, install "ILITek c-tp utility.exe", and open "TP Tool".



Click "Setting", select "Full Screen" in "Canvas Setting" and click "OK" to save and exit.

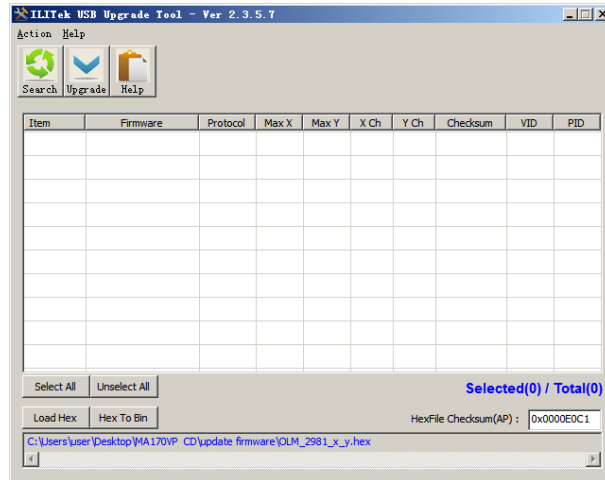


Click "Drawing" to test.

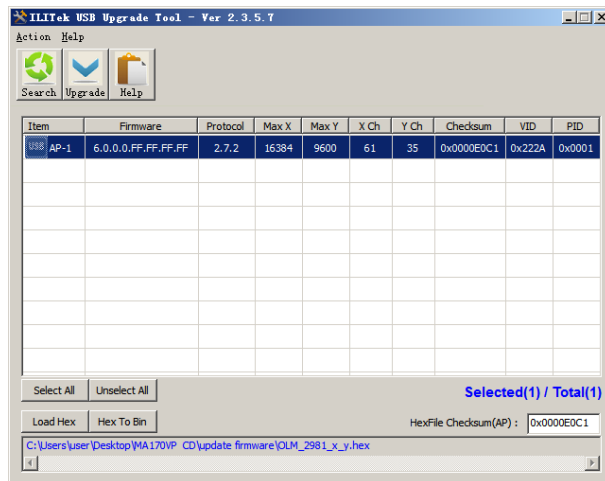


### 3.3 Touch Screen update

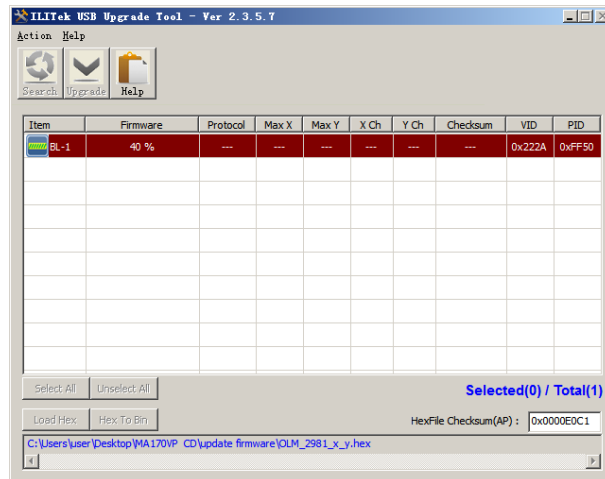
Open the "ilitekusbupgradetools.exe" in the CD.



Click "Search" to find the Touch device and click "Select All" to select the device.



Click "Load Hex" to load the firmware and click "Upgrade" to update the firmware.



# Chapter IV: Common Faults and Exclusion

## **No display on the screen:**

1. Power saving mode is on, so press any key on the keyboard or move the mouse to deactivation.
2. The pins of the VGA cable (HDMI/DVI)connector are bent or lost contact to the VGA (HDMI/DVI)interface, change the VGA (HDMI/DVI)cable. If problems still exist, bring the unit to the service provider.

## **Characters look too dark or to light:**

Using OSD Menu to adjust the brightness.

## **When your monitor needs to be adjusted:**

The resolution of frequency is unclear.

## **The text appears on the screen are unclear:**

Make sure the resolution or refresh rate are matching with the Display Mode.

## **Touch panel doesn't respond:**

Make sure you touch the USB interface to connect to your PC.

Thank you very much for using 3nStar product.