



Blackwire 5200 Series

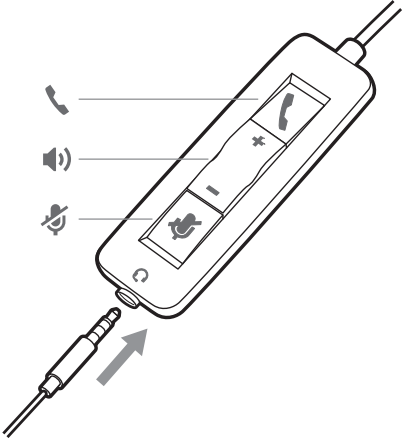
Corded USB headset with 3.5 mm connection

User Guide

Contents

Overview	3
Setup	4
Load software	4
Fit	5
Adjust the headband	5
Position the boom	5
Adjust the boom	5
Basics	6
Make/take/end calls	6
Volume	6
Mute	6
Troubleshooting	7
Headset	7
Support	8

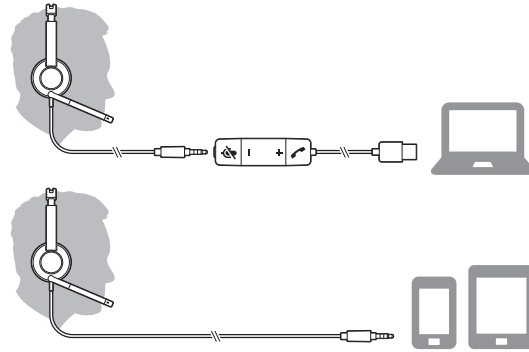
Overview



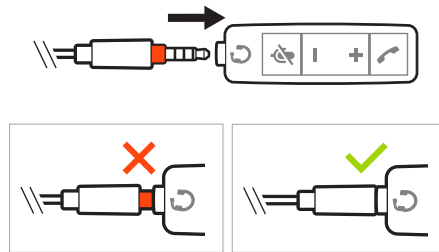
Icons	Inline control	LEDs	Function
☎	Call button	Triple flash green	Incoming call
		Double flash green	Call on hold
		Solid green	On a call
+	Volume up button		Increases the listening volume
-	Volume down button		Decreases the listening volume
🔇	Mute button	Solid red	Headset is muted

Setup

Power on your headset by connecting to your computer or mobile device via USB or 3.5 mm connector.



IMPORTANT Ensure that your 3.5 mm connector is fully connected to the headset controller.



Load software

Customize your device behavior through advanced settings and options with Poly Lens Desktop App. Some softphones require the installation of Poly software to enable device call control (answer/end and mute) functionality. Download: poly.com/lens.

NOTE Device settings are also available in Plantronics Hub Desktop App.

Update your Poly device

Keep your firmware and software up-to-date to improve performance and add new features to your Poly device.

Update your device using your computer with Poly Lens Desktop App. Download at poly.com/lens.

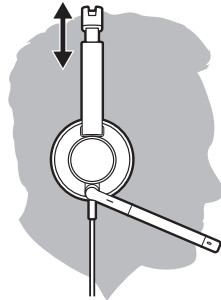
While updating:

- Do not use your Poly device until the update is complete.
- Do not start a second update from a second device.
- Do not stream media.
- Do not answer or place a call.

Fit

Adjust the headband

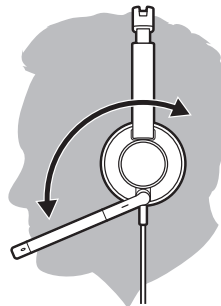
Lengthen or shorten the band until it fits comfortably. The cushions should sit comfortably over the center of your ears.



Position the boom

The headset can be worn with the boom on your left or right side. For true stereo listening, wear the boom on your left side.

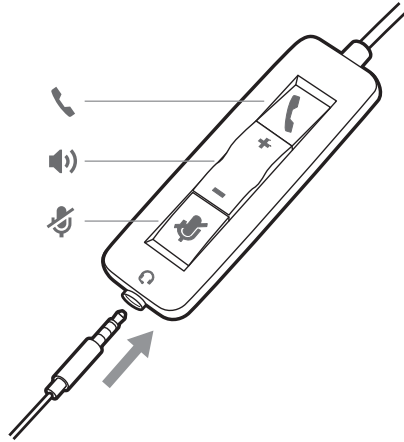
Rotate the boom to align with your mouth.



Adjust the boom

Gently bend the boom in or out so it is approximately one finger width from the corner of your mouth.

Basics



Make/take/end calls

Headset call control is a software feature and dependent on a compatible softphone. If you have not installed Poly Lens Desktop App (poly.com/lens) or do not have a compatible softphone, press the headset call button first and then make/take/end the call using the softphone application.

Answer or end a call

Tap the Call button or use your softphone.

Make a call

Dial using your softphone application.

Redial

When not on an active call, double-tap the call button to redial the last call.

Hold

Double-tap the Call button to put a call on hold.

Volume

Listening volume

Press the Volume up (+) or Volume down (-) button.

Adjust headset microphone volume (softphone)

Place a test softphone call and adjust softphone volume and PC sound volume accordingly.

Mute

During a call, briefly press the mute button to mute the microphone on the inline controller. To unmute press the button again.

Troubleshooting

Headset

I hear a high-pitched noise when wearing the headset.

- Ensure that your 3.5 mm connector is fully connected to the headset controller.

I cannot hear caller.

- Listening volume is too low. Press the volume up button on the headset, and/or ensure that the volume setting on your computer is set accurately.
- Your headset is not set as the default audio device. Use the audio settings in your sound control panel/preferences to select your headset as the default audio device.
- Ensure that your 3.5 mm connector is fully connected to the headset controller.

Callers cannot hear me.

- Headset is muted. Tap the mute button to unmute the microphone.
- Headset microphone boom aligned incorrectly. Align the headset boom with your mouth.
- Your headset is not set as the default Voice device. Use the audio settings in your sound control panel/preferences to change the input device.
- Ensure that your 3.5 mm connector is fully connected to the headset controller.

The sound in the headset is distorted.

- Lower the listen volume on your softphone until the distortion disappears.

I can hear an echo in the headset.

- Adjust volume on headset.
- Ensure that your 3.5 mm connector is fully connected to the headset controller.

When I use my headset with a softphone, the headset call control and mute buttons don't work.

- Make sure the softphone you are using is supported by viewing www.plantronics.com/softphonecompatibility.
- If required to enable headset control (answer/end and mute) functionality, ensure you have Poly Lens Desktop App installed. See [Load software](#).
- Your mobile device may not support call control functionality. Check with device manufacturer.

The other headset I was using to listen to music does not work any more.

- Your headset will set itself as the default audio device in Windows. Use the audio settings in your sound control panel/preferences to change the audio device.

My phone is not finding my headset during a call or while listening to music.

- When on a call or listening to music, make sure that audio is routing to the desired headset by going to your settings and ensuring it is defaulted.
-

Support

NEED MORE HELP?

poly.com/support

Plantronics, Inc.	Plantronics B.V.
345 Encinal Street	Scorpius 171
Santa Cruz, CA 95060	2132 LR Hoofddorp
United States	Netherlands

© 2021 Plantronics, Inc. All rights reserved. Poly, the propeller design, and the Poly logo are trademarks of Plantronics, Inc. All other trademarks are the property of their respective owners. Manufactured by Plantronics, Inc.

209253-06 06.21