

USB Joystick Controller

User Manual

SPC-2001

USB Joystick Controller

User Manual

Copyright

©2023 Hanuha Vision Co., Ltd. All rights reserved.

Trademark

Each of trademarks herein is registered. The name of this product and other trademarks mentioned in this manual are the registered trademark of their respective company.

Restriction

Copyright of this document is reserved. Under no circumstances, this document shall be reproduced, distributed or changed, partially or wholly, without formal authorization.

Disclaimer

Hanuha Vision makes the best to verify the integrity and correctness of the contents in this document, but no formal guarantee shall be provided. Use of this document and the subsequent results shall be entirely on the user's own responsibility. Hanuha Vision reserves the right to change the contents of this document without prior notice.

❖ Design and specifications are subject to change without prior notice.

IMPORTANT SAFETY INSTRUCTIONS

1. Read these instructions.
2. Keep these instructions.
3. Heed all warnings.
4. Follow all instructions.
5. Do not use this apparatus near water.
6. Clean the contaminated area on the product surface with a soft, dry cloth or a damp cloth. (Do not use a detergent or cosmetic products that contain alcohol, solvents or surfactants or oil constituents as they may deform or cause damage to the product.)
7. Do not block any ventilation openings, Install in accordance with the manufacturer's instructions.
8. Do not install near any heat sources such as radiators, heat registers, stoves, or other apparatus (including amplifiers) that produce heat.
9. Do not defeat the safety purpose of the polarized or grounding-type plug. A polarized plug has two blades with one wider than the other. A grounding type plug has two blades and a third grounding prong. The wide blade or the third prong are provided for your safety. If the provided plug does not fit into your outlet, consult an electrician for replacement of the obsolete outlet.
10. Protect the power cord from being walked on or pinched particularly at plugs, convenience receptacles, and the point where they exit from the apparatus.
11. Only use attachments/ accessories specified by the manufacturer.
12. Use only with the cart, stand, tripod, bracket, or table specified by the manufacturer, or sold with the apparatus. When a cart is used, use caution when moving the cart/ apparatus combination to avoid injury from tip-over.
13. Unplug this apparatus during lightning storms or when unused for long periods of time.
14. Refer all servicing to qualified service personnel. Servicing is required when the apparatus has been damaged in any way, such as power-supply cord or plug is damaged, liquid has been spilled or objects have fallen into the apparatus, the apparatus has been exposed to rain or moisture, does not operate normally, or has been dropped.

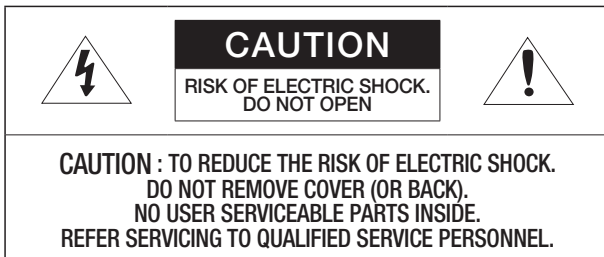


WARNING

TO REDUCE THE RISK OF FIRE OR ELECTRIC SHOCK, DO NOT EXPOSE THIS PRODUCT TO RAIN OR MOISTURE. DO NOT INSERT ANY METALLIC OBJECT THROUGH THE VENTILATION GRILLS OR OTHER OPENINGS ON THE EQUIPMENT.

Apparatus shall not be exposed to dripping or splashing and that no objects filled with liquids, such as vases, shall be placed on the apparatus.

CAUTION



EXPLANATION OF GRAPHICAL SYMBOLS



The lightning flash with arrowhead symbol, within an equilateral triangle, is intended to alert the user to the presence of “dangerous voltage” within the product’s enclosure that may be of sufficient magnitude to constitute a risk of electric shock to persons.



The exclamation point within an equilateral triangle is intended to alert the user to the presence of important operating and maintenance (servicing) instructions in the literature accompanying the product.

Please read the following recommend safety precautions carefully.

- Do not Place this apparatus on an uneven surface.
- Do not install on a surface where it is exposed to direct sunlight, near heating equipment or heavy cold area.
- Do not place this apparatus near.
- Do not attempt to service this apparatus yourself.
- Do not place a glass of water on the product.
- Do not install near any magnetic sources.
- Do not block any ventilation openings.
- Do not place heavy items on the product.

User's Manual is a guidance book on how to use the product.
Below is a key to the following signs that are used in this manual.

- Reference : Providing useful information for the user.
 - Notice : If the instructions are not followed correctly damage to the goods or person may occur.
- ※ For safety please read this manual for the before using of goods and keep it in the safe place.

overview

CONTENTS

OVERVIEW	3	Important Safety Instructions
	6	Contents
	7	What's Included
	8	Product Features
	8	Part Names & Functions
	9	Pan / Tilt / Zoom Using Joystick

3

INSTALLATION	10	System Requirements
	10	Installing the Controller

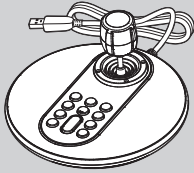
10

APPENDIX	12	Troubleshooting
-----------------	-----------	-----------------

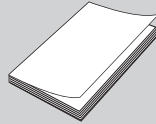
12

WHAT'S INCLUDED

Unpack the product package and place the product on the floor or a flat surface.
Check if the following components are all included in the product package.



Main Unit



User Manual

overview

PRODUCT FEATURES

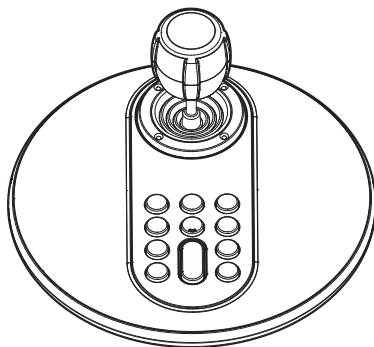
The SPC-2001 consists of a 3-axis handle for PTZ operation and 12 buttons for custom settings. The SPC-2001 helps you to control monitoring cameras more easily and accurately. It supports USB connection for convenient use in a computer environment. Connect it to the USB port on a computer that supports DirectX; you can use it immediately, without extra software installation. Compatible with SSM v2.13 or higher.

PART NAMES & FUNCTIONS

The SPC-2001 controller consists of a joystick and main unit. Pull the joystick left, right, up, or down to control the Pan and Tilt operations. To zoom in or out on the screen, rotate it.

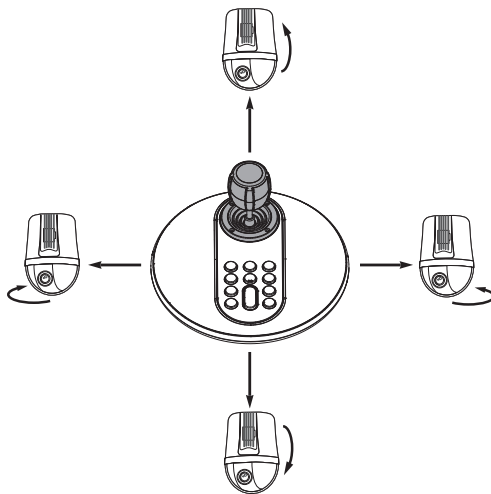
12 buttons are on the main unit. You can configure the buttons to perform functions in the pre-set settings.

For more information about the 12 buttons, refer to the user manual of the connected product.

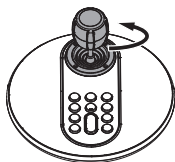


PAN / TILT / ZOOM USING JOYSTICK

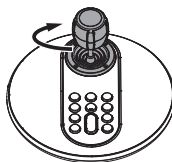
To pan your camera, pull the joystick left and right. To tilt, pull it up and down. The farther you move the joystick from the center, the faster the camera moves. To zoom in and out on the monitoring screen, rotate the joystick clockwise or counterclockwise. The more you rotate the joystick, the faster the zoom speed is.



< Pan & Tilt Control >



< Zoom Wide Action >



< Zoom Tele Action >

< Zoom Control >

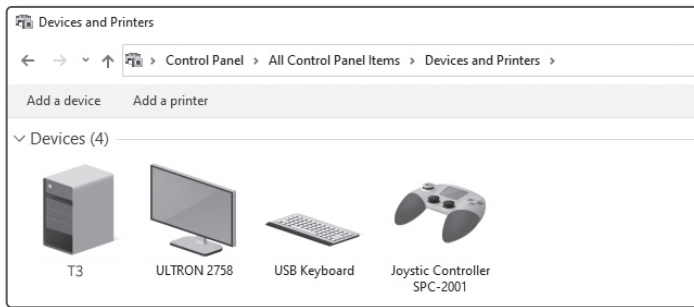
installation

SYSTEM REQUIREMENTS

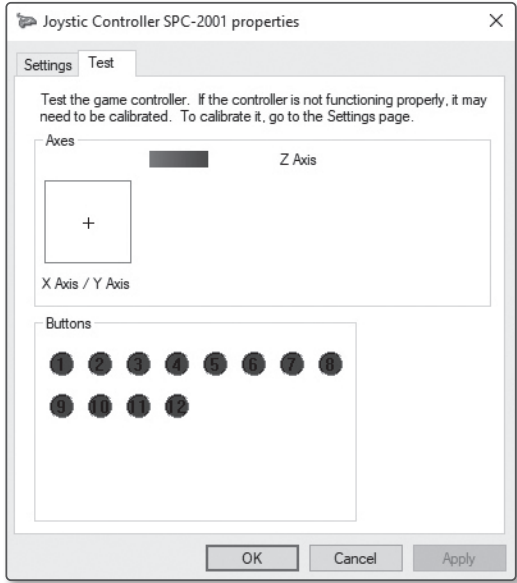
- Windows 8.1 or higher
- USB conversion software that detects the controller via DirectX
- 1 USB port

INSTALLING THE CONTROLLER

1. Turn on your computer, and then connect the controller to the USB port.
2. A window appears informing you that a new device has been detected.
3. Your computer detects the controller automatically.
4. The installed controller will be displayed in the list of devices if the device is identified.
[Control panel] → [Devices and Printers] → [Device] → [Joystick Controller SPC-2001]



- 5. Make sure to check if PAN, TILT, ZOOM, and the 12 buttons operate in [Joystick Controller SPC-2001 properties] → [Test].
Since this product is released with calibration, there is no need to calibrate the product in [Properties] → [Settings].



appendix

TROUBLESHOOTING

If you experience any problem using the product, please check the following.

Symptom	Countermeasures
If the controller does not operate properly	<ul style="list-style-type: none">• Contact customer service if SPC-2001 does not operate on another PC.
If your computer does not detect the controller	<ul style="list-style-type: none">• Check if the operating system supports DirectX.• Check if the computer's USB port is working properly.
If the controller buttons are hard to press	<ul style="list-style-type: none">• Check if there is anything blocking the buttons. Clean and remove any blockage.
If the joystick is hard to move	<ul style="list-style-type: none">• Check if there is anything blocking the bottom of the joystick. Clean and remove the blockage.

Any changes or modifications in construction of this device which are not expressly approved by the party responsible for compliance could void the user's authority to operate the equipment.

This device complies with part 15 of the FCC Rules. Operation is subject to the following two conditions: (1) This device may not cause harmful interference, and (2) this device must accept any interference received, including interference that may cause undesired operation.



This equipment has been tested and found to comply with the limits for a Class A digital device, pursuant to part 15 of the FCC Rules. These limits are designed to provide reasonable protection against harmful interference when the equipment is operated in a commercial environment.

This equipment generates, uses, and can radiate radio frequency energy and, if not installed and used in accordance with the instruction manual, may cause harmful interference to radio communications. Operation of this equipment in a residential area is likely to cause harmful interference in which case the user will be required to correct the interference at his own expense.



Hanwha Vision cares for the environment at all product manufacturing stages, and is taking measures to provide customers with more environmentally friendly products.

The Eco mark represents Hanwha Vision's devotion to creating environmentally friendly products, and indicates that the product satisfies the EU RoHS Directive.



Correct Disposal of This Product (Waste Electrical & Electronic Equipment)

(Applicable in the European Union and other European countries with separate collection systems)

This marking on the product, accessories or literature indicates that the product and its electronic accessories (e.g. charger, headset, USB cable) should not be disposed of with other household waste at the end of their working life. To prevent possible harm to the environment or human health from uncontrolled waste disposal, please separate these items from other types of waste and recycle them responsibly to promote the sustainable reuse of material resources.

Household users should contact either the retailer where they purchased this product, or their local government office, for details of where and how they can take these items for environmentally safe recycling.

Business users should contact their supplier and check the terms and conditions of the purchase contract. This product and its electronic accessories should not be mixed with other commercial wastes for disposal.

