

Dell Pro Headset Charging Stand HC524

User's Guide

Regulatory Model: DS2401





NOTE: A NOTE indicates important information that helps you make better use of your computer.



CAUTION: A CAUTION indicates potential damage to hardware or loss of data if instructions are not followed.



WARNING: A WARNING indicates a potential for property damage, personal injury, or death.

Copyright © 2024 Dell Inc. or its subsidiaries. All rights reserved. Dell, EMC, and other trademarks are trademarks of Dell Inc. or its subsidiaries. Other trademarks may be trademarks of their respective owners.

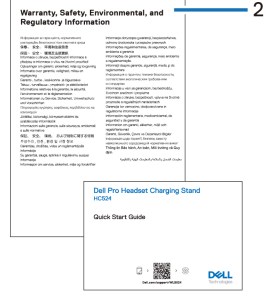
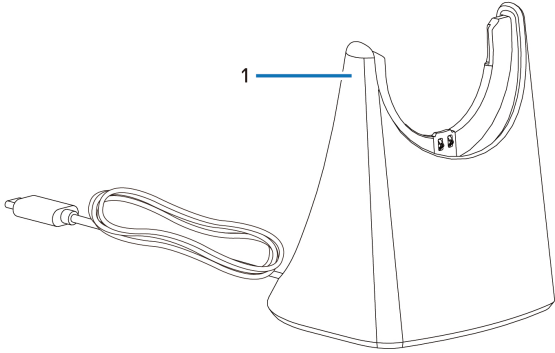
2024-02

Rev. A00

Contents

- What's in the box3
- Overview4
- Specification5
- Charging the headset.....6
 - Connect the charging stand to power supply6
 - Connect the headset to charging stand7
- Regulatory and PPID label position8
- Statutory information.....9
 - Warranty.....9
- Safety information..... 10
 - About this task 10
 - Battery Safety..... 11
 - Terms and conditions of sale are specified in agreements with authorized resellers..... 11
- Getting help 12
 - Contacting Dell..... 12

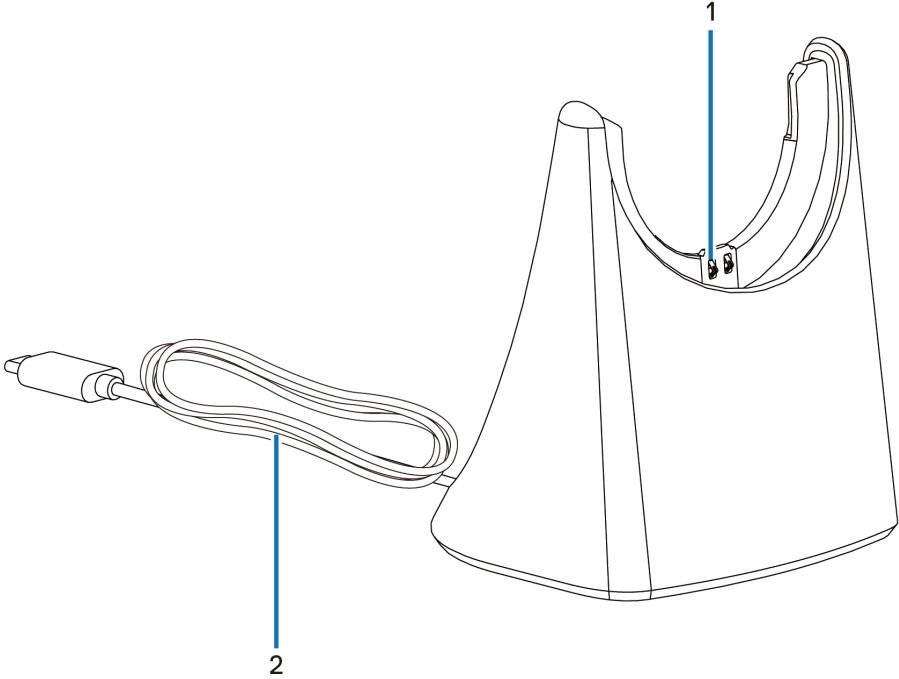
What's in the box



1. HC524 charging stand

2. Documentations

Overview



1. Charging pin

2. USB-C charging cable

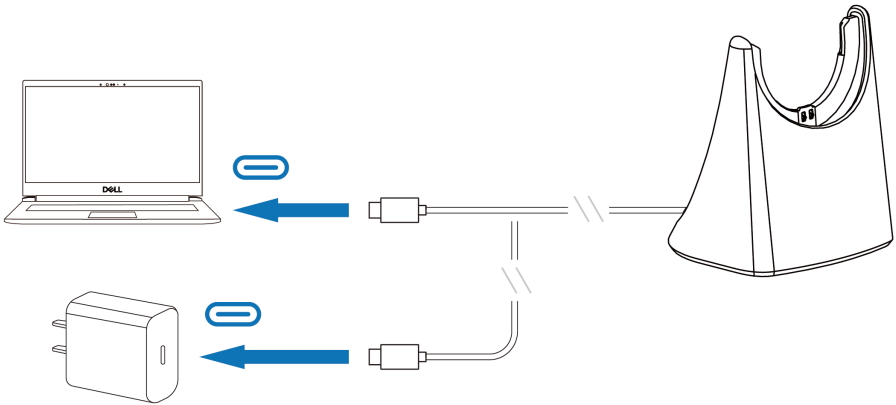
Specification

| Specifications | Value |
|--------------------------|------------------------------|
| Charging stand weight | 230 g |
| Charging cable dimension | 1.2 m |
| Operating temperature | 0°C to 40°C (32°F to 104°F) |
| Storage temperature | -5°C to 45°C (23°F to 113°F) |
| Operating humidity | 5% to 90% relative humidity |

Charging the headset

Connect the charging stand to power supply

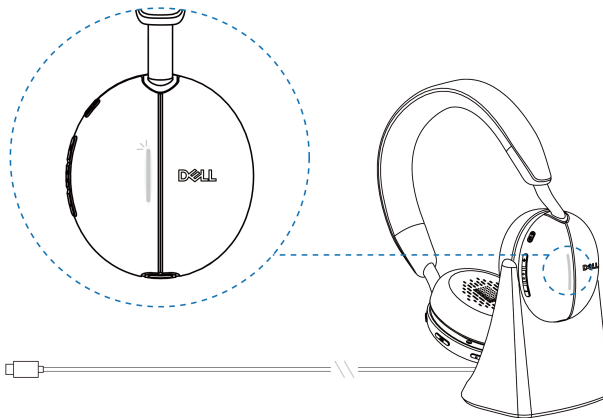
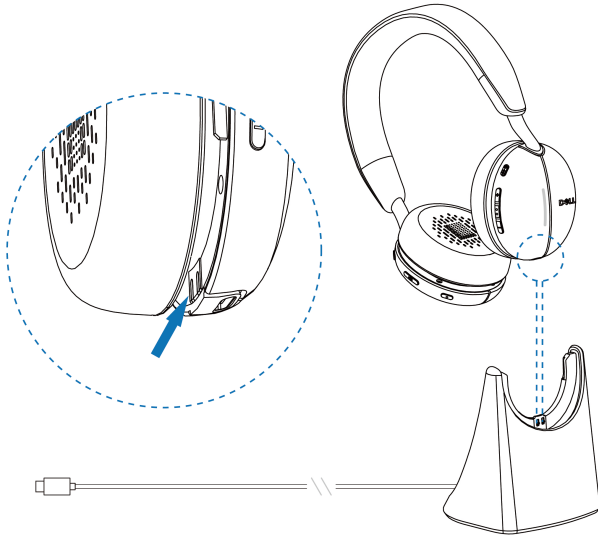
Connect the charging stand to a power supply or powered USB port on a computer by the USB-C charging cable.



NOTE: It is recommended to connect the charging stand to a power source rather than a computer or docking station.

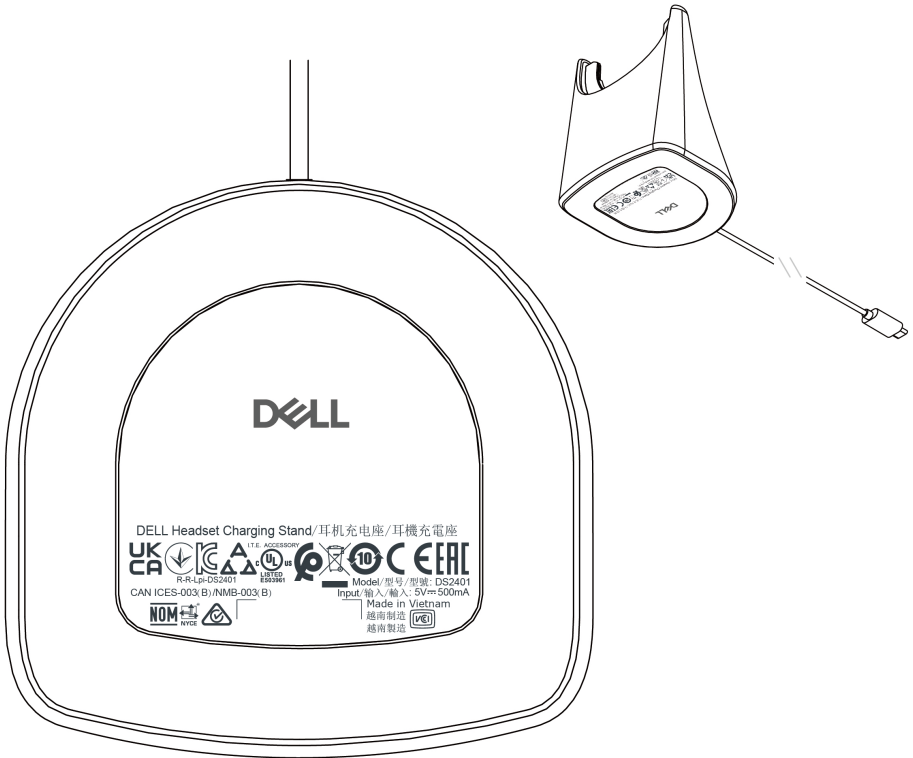
Connect the headset to charging stand

Dock the WL5024 headset on the charging stand by its charging pin. The charging stand is used for charging only. The power LED and busy light on the headset light up white while charging, then go off when fully charged.



Regulatory and PPID label position

The regulatory label is at the bottom of the charging stand.



DELL Headset Charging Stand/耳机充电座/耳機充電座
R-R-Lp-DS2401
CAN ICES-003(B)/NMB-003(B)
Model/型号/型號: DS2401
Input/輸入/輸入: 5V=500mA
Made in Vietnam
越南製造

NOTE: The image is a sample illustration to show the regulatory label location only. Locate the bottom of the charging stand to find the applicable regulatory labels or logos.

Statutory information

Warranty

Limited warranty and return policy

Dell-branded products carry a 1-year limited hardware warranty. If purchased together with a Dell system, it will follow the system warranty.

For U.S. customers:

This purchase and your use of this product are subject to Dell's end-user agreement, which you can find at www.dell.com/terms. This document contains a binding arbitration clause.

For European, Middle Eastern and African customers:

Dell-branded products that are sold and used are subject to applicable national consumer legal rights, the terms of any retailer sale agreement that you have entered into (which will apply between you and the retailer) and Dell's end user contract terms.

Dell may also provide an additional hardware warranty—full details of the Dell end user contract and warranty terms can be found by going to www.dell.com, selecting your country from the list at the bottom of the "home" page and then clicking the "terms and conditions" link for the end user terms or the "support" link for the warranty terms.


For non-U.S. customers:

Dell-branded products that are sold and used are subject to applicable national consumer legal rights, the terms of any retailer sale agreement that you have entered into (which will apply between you and the retailer) and Dell's warranty terms. Dell may also provide an additional hardware warranty—full details of Dell's warranty terms can be found by going to www.dell.com, selecting your country from the list at the bottom of the "home" page and then clicking the "terms and conditions" link or the "support" link for the warranty terms.

Safety information

About this task

To reduce the risk of fire, electric shock, personal injury, and property damage, read all operating instructions and the following safety instructions before using this device. Use only products and accessories designated for this device.

- If skin irritation develops after using this device, stop using the device and contact DELL.
- Do not let children play with small parts of the device, as they may enter the child's airways and cause choking.
- Do not disassemble the device as this may result in electric shock and other risks. Improper disassembly may cause electric shock if the phone is used again.
- If the device overheats or is damaged to the case, cord, or plug, unplug it and discontinue use.
-  Using the device at high volume levels or at elevated sound pressure levels may cause temporary or permanent damage to your hearing. There is no specific volume setting that works for everyone, however, you should always adjust the volume of your headset or headphones to a medium level and avoid prolonged exposure to high volumes. The louder the sound, the faster it will lead to hearing impairment. When you use a headset or headphones with different devices, the volume of the playback sound may differ. The volume of the emitted sound depends on the device used and its settings. If you experience any discomfort, you should stop using this device with a headset or headphones and have your hearing checked by a doctor. To protect your hearing, experts recommend the following
 1. Decrease the audio volume before turning on the headset / headphones, and use the volume as low as possible.
 2. Do not try to increase the volume in order to drown out the surrounding noise. If possible, use the headset / headphones in a calm environment with low background noise.
 3. Limit the time you use your headset / headphones at high volume levels.
 4. Decrease the volume if the sound from the headphones or headset interferes with the speech of people around you.
- If you use a headset or headphones while driving, check your local laws for mobile phones or headsets and focus on ensuring safe driving. Using a headset or earbuds covering both ears when driving, including bicycle, reduces your ability to hear other sounds and can pose a significant risk to you and others, and is illegal in most countries.
- If in-ear / in-ear headphones were supplied with this unit, connect and use them according to the instructions provided. Do not use force to insert the in-ear / in-ear headphones into the ear canal. If they get stuck in the ear canal, consult your doctor.
- Use only chargers supplied by DELL to charge your device and follow the charging

instructions provided. In addition, if the headset is to be charged using a cell phone charger, use only chargers approved and supplied by the cell phone manufacturer for that model. Do not use the charger for any other purpose. Make sure the operating voltage matches the voltage of the power supply.

Battery Safety

- If your device has a built-in, non-replaceable battery, do not attempt to open the device or replace the battery as this could result in personal injury and / or damage to the device.
- Do not throw the product or used batteries into fire or leave in places with temperatures above 45°C (104° F).

The equipment is intended for use in residential, commercial and non-congested industrial areas. The equipment belongs to class B for electromagnetic compatibility.


Terms and conditions of sale are specified in agreements with authorized resellers

The crossed out wheeled bin symbol indicates that used electrical and electronic equipment and batteries should not be disposed of with unsorted municipal waste; disposal of this type of waste should be carried out separately from other waste. The equipment meets the requirements of the Technical Regulations of the Customs Union "Electromagnetic compatibility of technical equipment" (TR CU 020/2011).

The equipment meets the requirements of the Technical Regulations of the Eurasian Economic Union "On the Restriction of the Use of Hazardous Substances in Electrical and Electronic Products" (TR EAEU 037/2016).

Getting help

Contacting Dell

 **NOTE: If you do not have an active Internet connection, you can find contact information on your purchase invoice, packing slip, bill, or Dell product catalog.**

Dell provides several online and telephone-based support and service options. Availability varies by country and product, and some services may not be available in your area. To contact Dell for sales, technical support, or customer service issues:

Steps:

1. Go to www.dell.com/support.
2. Select your support category.
3. Verify your country or region in the Choose a Country/Region drop-down list at the bottom of the page.
4. Select the appropriate service or support link based on your need.